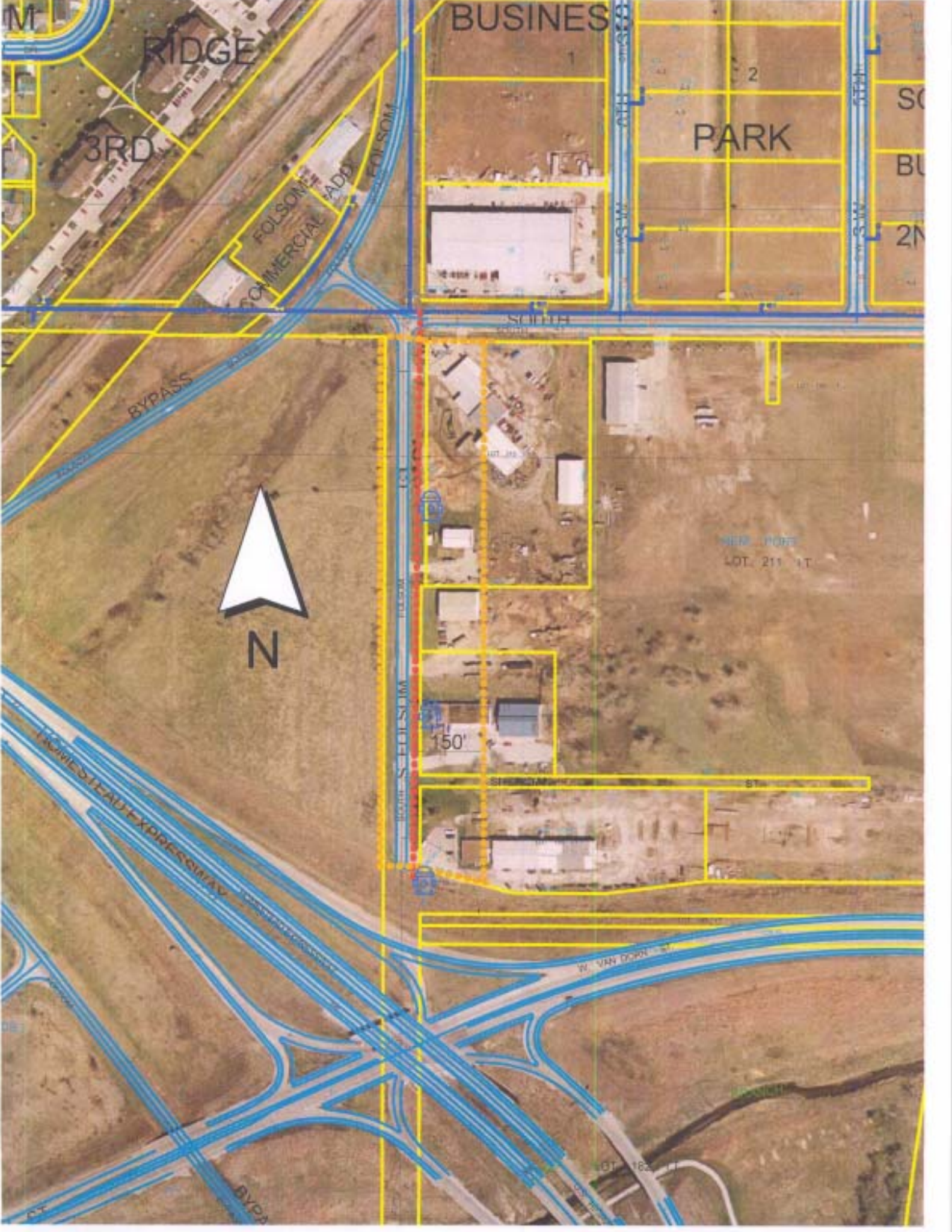


Water District : South Folsom, West South, South approx 1250 Feet
 Requested By : Steel Fab
 Est. Cost : \$75,500 +/-

SAI T



M

RIDGE

BUSINESS

PARK

3RD

FOLSOM
COMMERCIAL ADD

SO

BU

2N

BYPASS



N

SOUTH

NEW PORT
LOT 211 1T

150'

STANDARD

ST

VAN DYKE EXPRESSWAY

W. VAN DYKE ST

LOT 162 1T