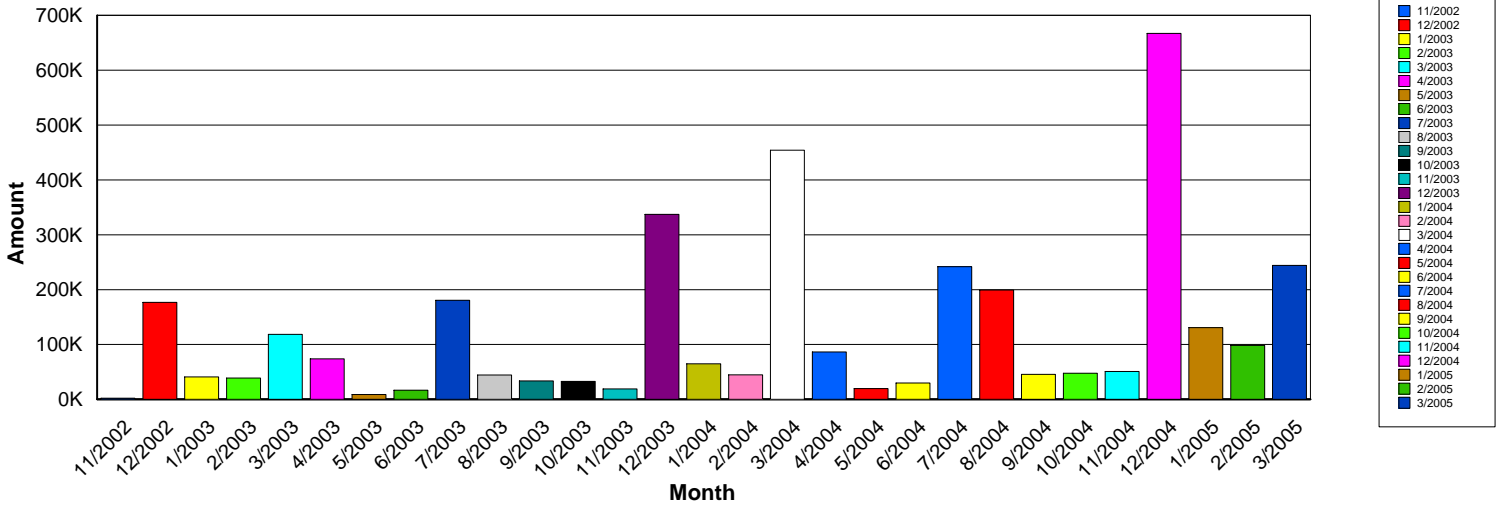


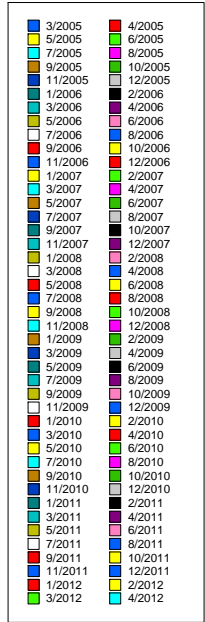
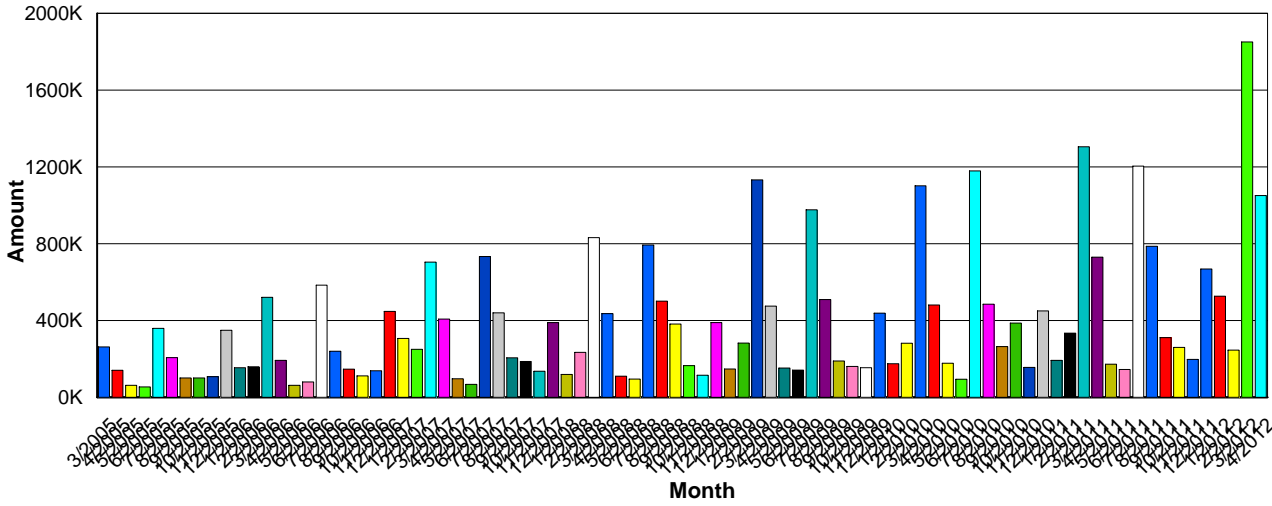
County Property Tax



<u>Month</u>	<u>Count</u>	<u>Full Amt</u>	<u>E-Fee</u>	<u>Amount</u>
2002	51	180,466.76	1,530.00	178,936.76
2003	382	957,310.79	11,460.00	945,850.79
2004	742	1,974,337.07	22,260.00	1,952,077.07
2005	213	479,807.13	6,390.00	473,417.13
CTO Total	1,388	3,591,921.75	41,640.00	3,550,281.75

*Epos started in March 2005.

County Property Tax



<u>Month</u>	<u>Count</u>	<u>Full Amt</u>	<u>E-Fee</u>	<u>Amount</u>
2005	952	1,774,335.28	26,031.69	1,748,303.59
2006	1,604	2,875,723.88	34,530.51	2,841,193.37
2007	2,039	3,969,430.85	43,458.49	3,925,972.36
2008	2,236	4,214,697.72	40,426.36	4,174,271.36
2009	2,416	4,802,574.96	39,854.76	4,762,720.20
2010	2,786	5,279,867.85	43,908.57	5,235,959.28
Jan-11	87	195,026.07	2,137.26	192,888.81
Feb-11	144	337,793.48	3,220.49	334,572.99
Mar-11	742	1,316,564.17	11,506.01	1,305,058.16
Apr-11	421	735,061.18	4,787.06	730,274.12
May-11	91	173,671.10	933.99	172,737.11
Jun-11	93	146,528.21	955.06	145,573.15
Jul-11	756	1,214,701.16	10,288.55	1,204,412.61
Aug-11	399	792,971.02	6,312.73	786,658.29
Sep-11	213	313,491.61	2,544.87	310,946.74
Oct-11	148	261,912.35	1,821.36	260,090.99
Nov-11	69	198,696.58	1,114.80	197,581.78
Dec-11	270	674,572.77	5,978.20	668,594.57
2011	3,433	6,360,989.70	51,600.38	6,309,389.32
Jan-12	268	531,554.54	4,653.77	526,900.77
Feb-12	160	248,219.60	2,184.88	246,034.72
Mar-12	853	1,862,824.43	12,036.87	1,850,787.56
Apr-12	542	1,057,694.91	6,881.25	1,050,813.66
2012	1,823	3,700,293.48	25,756.77	3,674,536.71
CTO Total	17,289	32,977,913.72	305,567.53	32,672,346.19
Total Web Activity	18,677	36,569,835.47	347,207.53	36,222,627.94

*Epos started in March 2005.