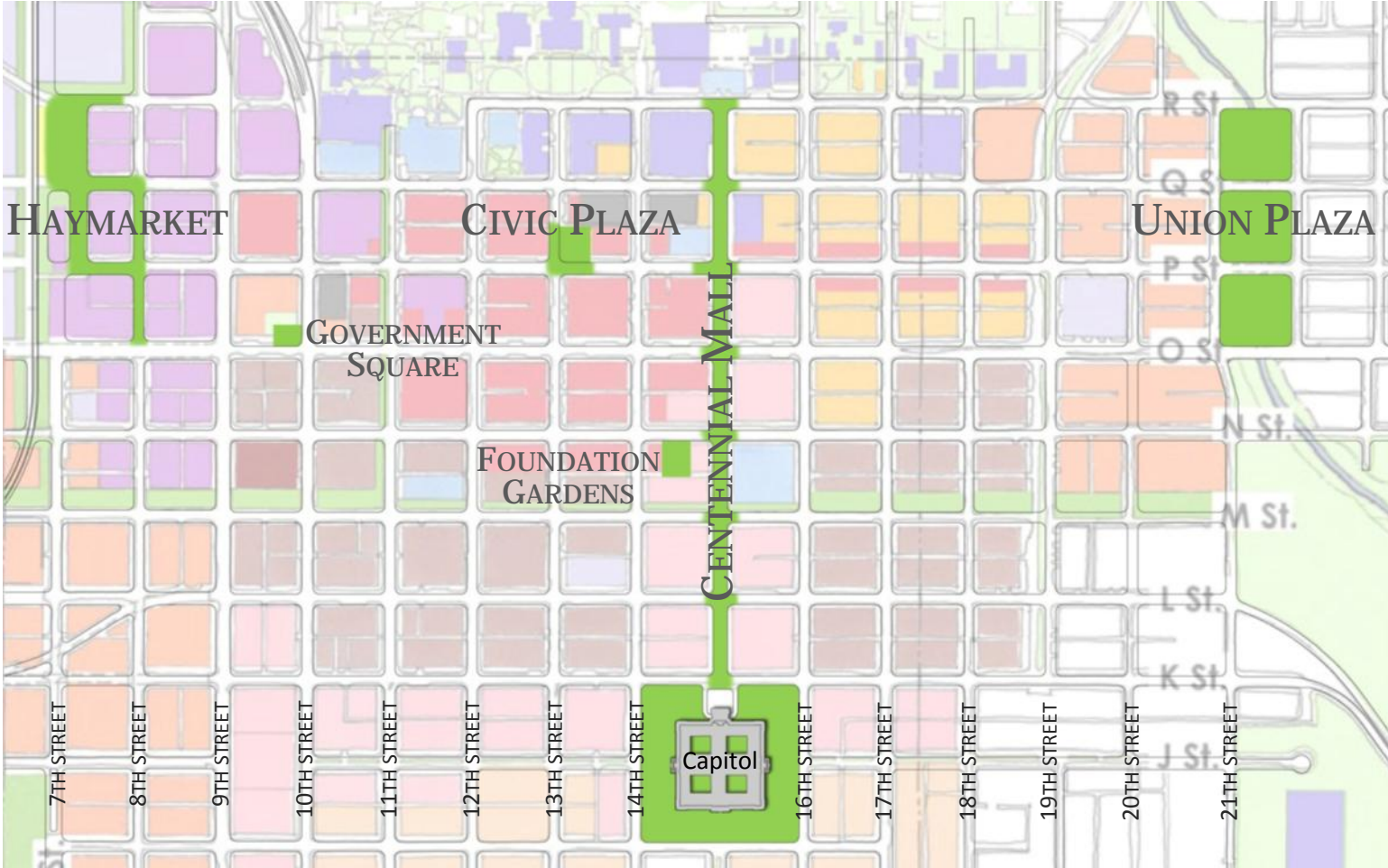


CENTENNIAL MALL MASTER PLAN APPROVAL

December 16, 2010



DOWNTOWN PUBLIC SPACES



HAYMARKET

CIVIC PLAZA

UNION PLAZA

GOVERNMENT
SQUARE

FOUNDATION
GARDENS

CENTENNIAL MALL

Capitol

7TH STREET

8TH STREET

9TH STREET

10TH STREET

11TH STREET

12TH STREET

13TH STREET

14TH STREET

16TH STREET

17TH STREET

18TH STREET

19TH STREET

20TH STREET

21TH STREET

R St.

Q St.

P St.

O St.

N St.

M St.

L St.

K St.

J St.

'R' STREET

'Q' STREET

'P' STREET

'O' STREET

'N' STREET

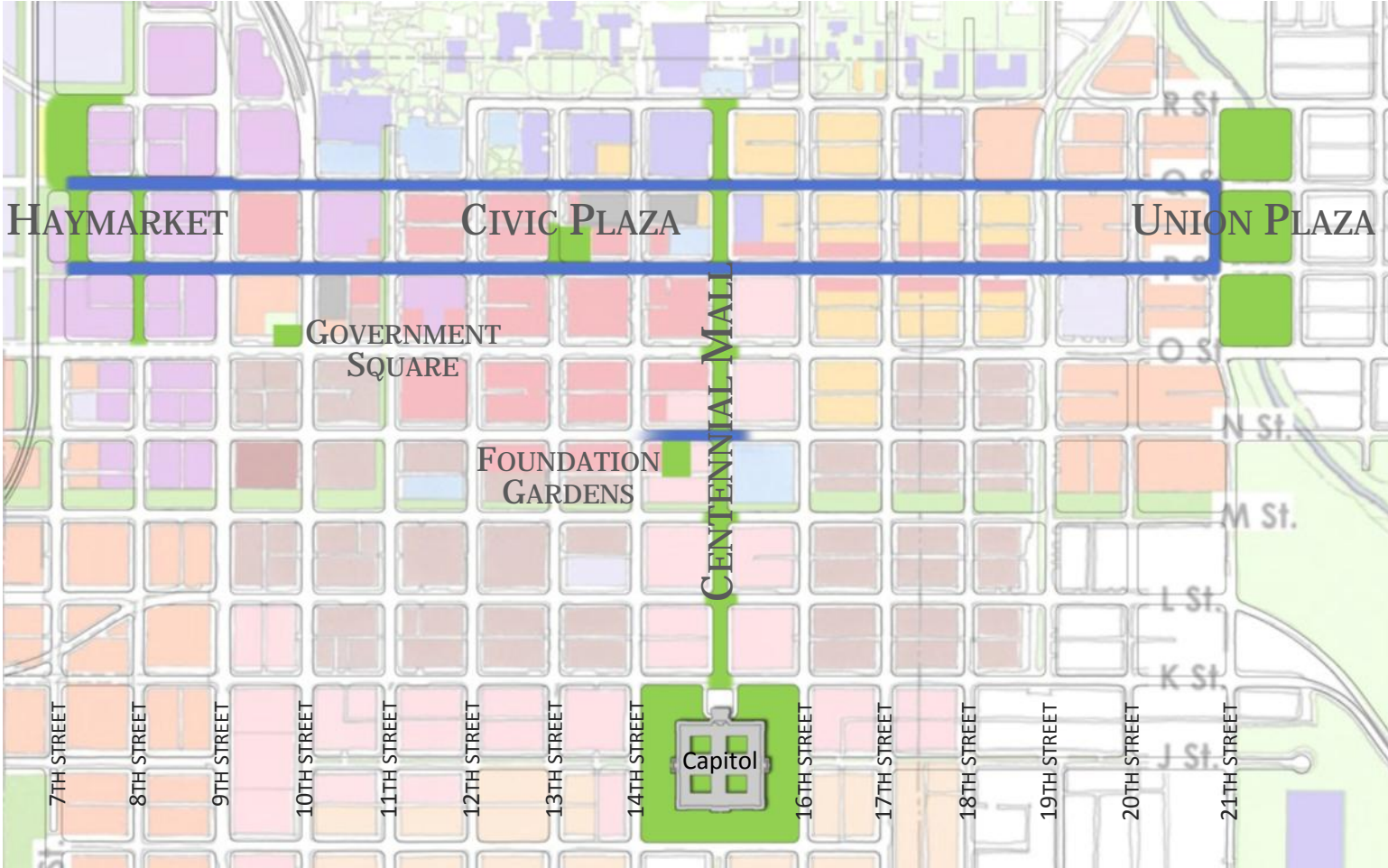
'M' STREET

'L' STREET

'K' STREET

'J' STREET

DOWNTOWN PUBLIC SPACES



HAYMARKET

CIVIC PLAZA

UNION PLAZA

GOVERNMENT
SQUARE

FOUNDATION
GARDENS

CENTENNIAL MALL

Capitol

7TH STREET

8TH STREET

9TH STREET

10TH STREET

11TH STREET

12TH STREET

13TH STREET

14TH STREET

16TH STREET

17TH STREET

18TH STREET

19TH STREET

20TH STREET

21TH STREET

'R' STREET

'Q' STREET

'P' STREET

'O' STREET

'N' STREET

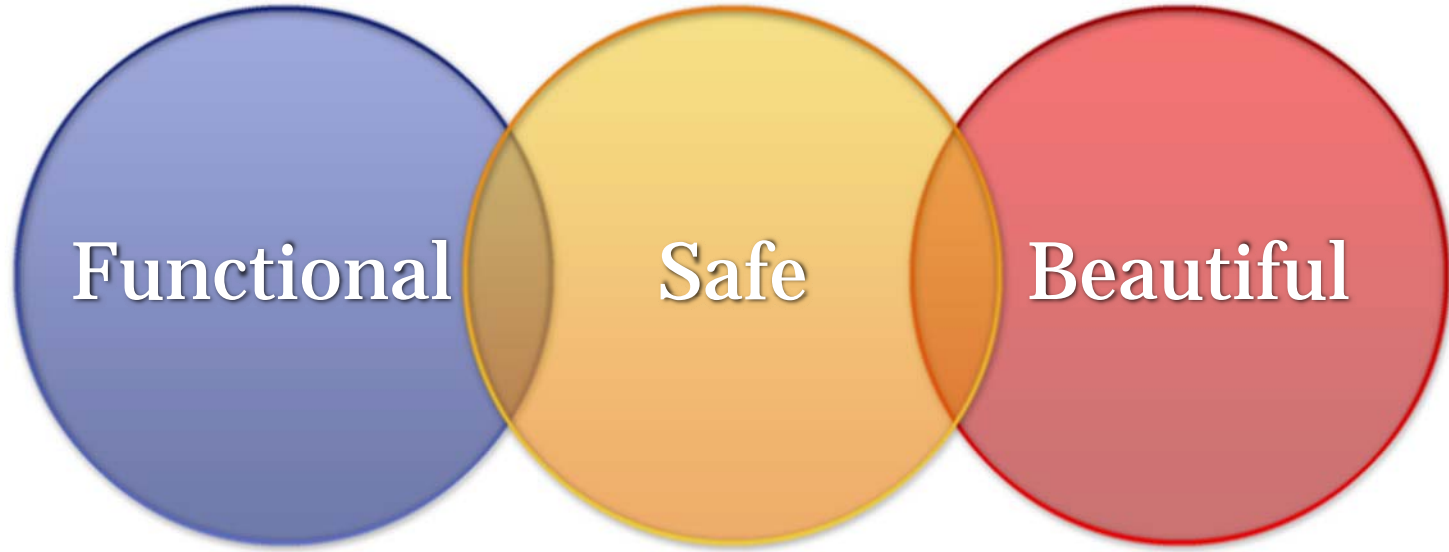
'M' STREET

'L' STREET

'K' STREET

'J' STREET

DESIGN REQUIREMENTS



Functional

Meets accessibility needs while providing space for seating, gathering and movement.

Safe

Provides a well-lit, secure space where people will not easily injure themselves.

Beautiful

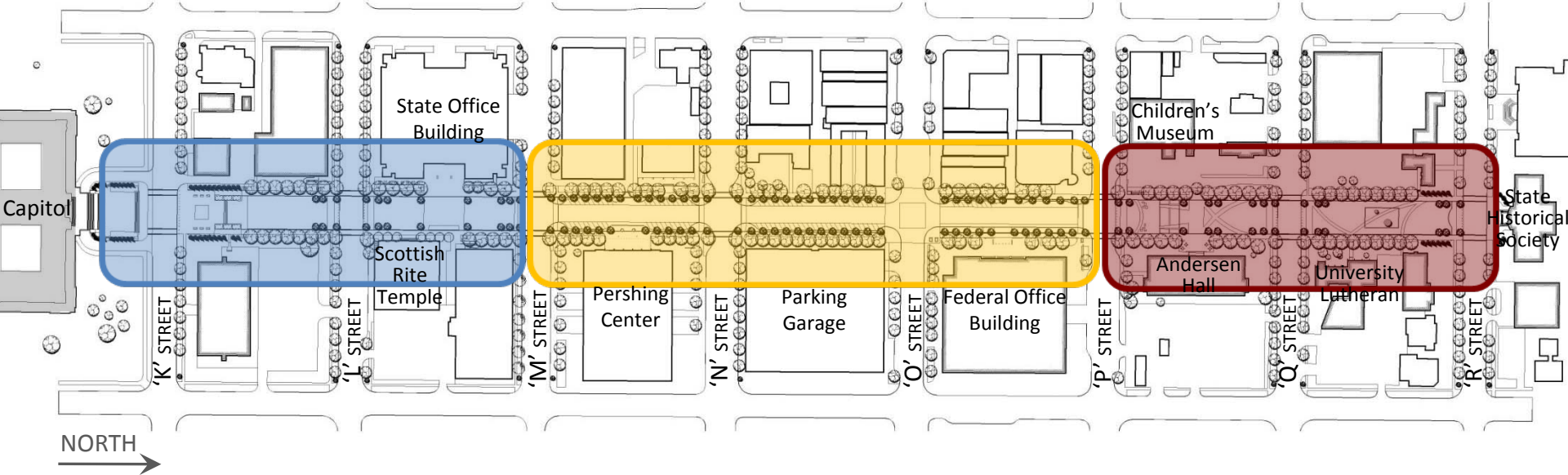
A place Nebraska can be proud of once again.

CENTENNIAL MALL

CIVIC BLOCKS

COMMUNITY BLOCKS

CAMPUS BLOCKS

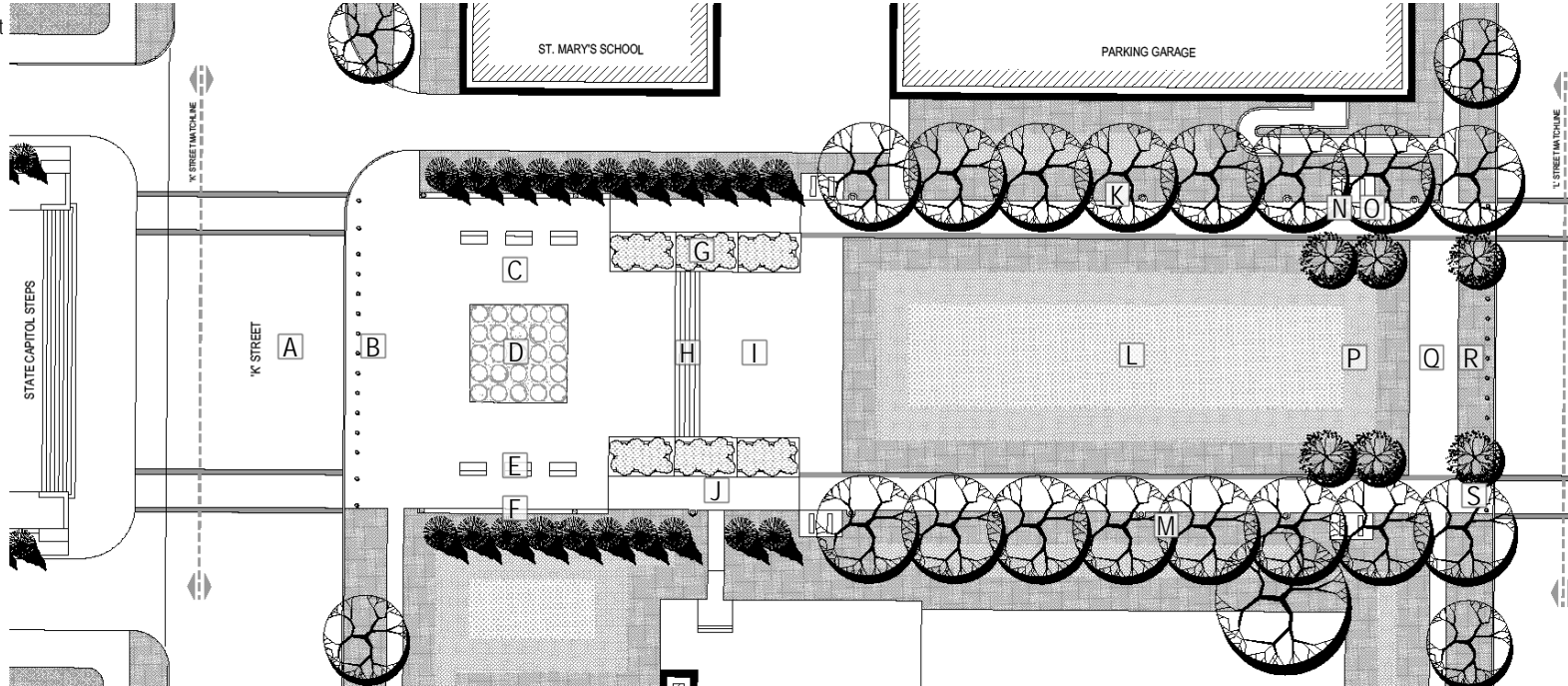


CENTENNIAL MALL

'K' STREET - 'L' STREET

LEGEND:

- A. Remove existing street pvmt. Construct new street pvmt (stenciled colored conc.) crosswalks included as different color/pattern than street
- B. 15 new bollards
- C. New unit pvmt
- D. New water feature
- E. 6 stone benches
- F. New stone seat wall, both sides of plaza
- G. New planter walls
- H. New plaza steps w/ stone veneer
- I. New unit pvmt
- J. New sidewalk both sides (colored conc.)
- K. 16 new pedestrian ornamental lights
- L. Turf and irrigation
- M. Trees and perennials
- N. 8 new benches
- O. 6 new trash receptacles
- P. Earthwork/grading
- Q. New unit pvmt
- R. 15 new bollards
- S. 4 new curb ramps, typical for each block

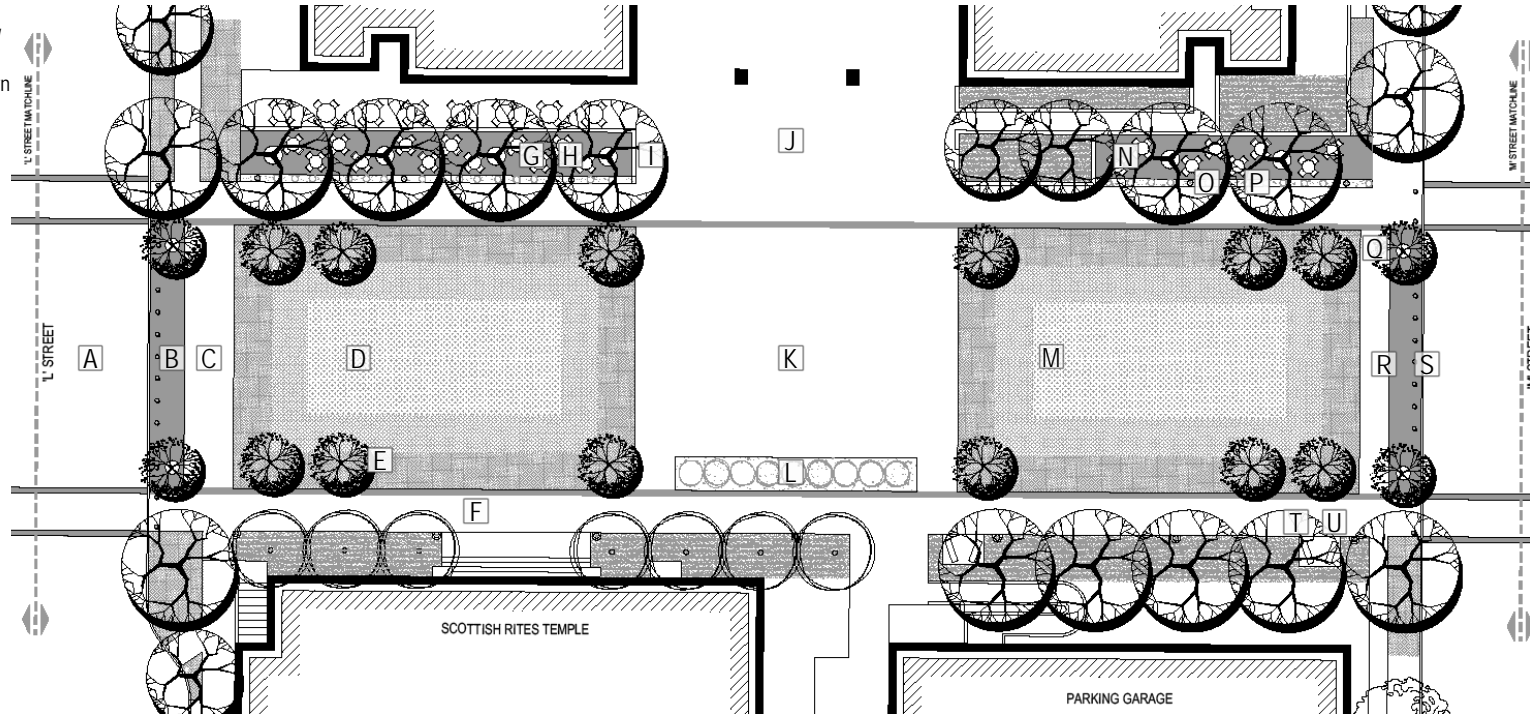


CENTENNIAL MALL

'L' STREET - 'M' STREET

LEGEND:

- A. Remove existing street pvmt. Construct new street pvmt (stenciled colored conc.) crosswalks included as different color/pattern than street
- B. 15 new bollards
- C. New unit pvmt
- D. Turf and irrigation (both sides)
- E. Trees and perennials
- F. New sidewalk both sides (colored conc.)
- G. New tables/chairs (both sides)
- H. 6 new Silva Cell trees
- I. New walls (both sides of SOB)
- J. New bldg. conc. Pvmt entrance
- K. New unit pvmt
- L. New water feature
- M. Earthwork/grading
- N. New unit paver seating pvmt (both sides)
- O. 12 new pedestrian ornamental lights
- P. New water feature (both sides)
- Q. 4 Silva Cell trees
- R. New unit pvmt
- S. 15 new bollards
- T. 4 new benches
- U. 4 new trash receptacles

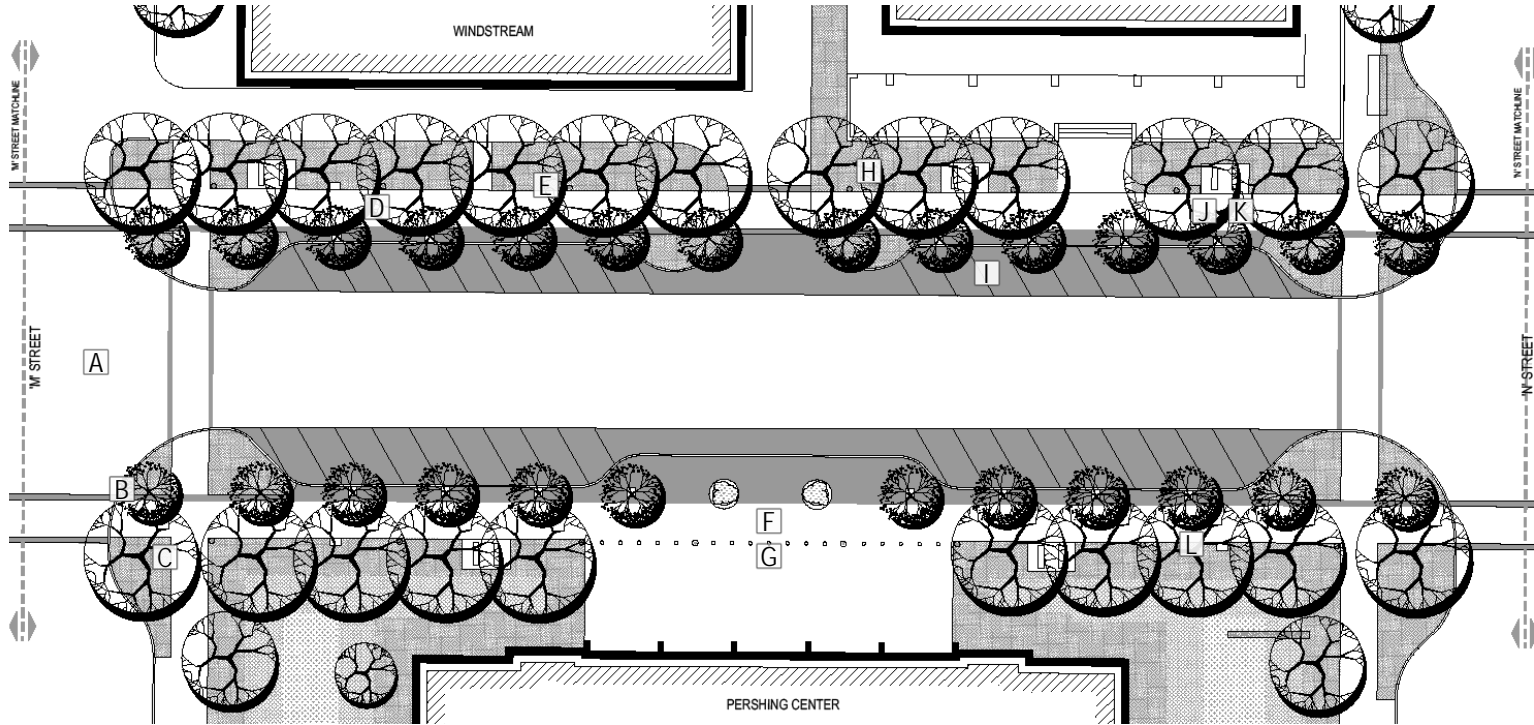


CENTENNIAL MALL

'M' STREET - 'N' STREET

LEGEND:

- A. Remove existing street pvmt. Construct new street pvmt (stenciled colored conc.) crosswalks included as different color/pattern than street
- B. 26 new Silva Cell trees (curb location)
- C. 4 new Silva Cell overstory trees (curb location)
- D. New pervious sidewalk unit pvmt
- E. 14 new pedestrian ornamental lights (both sides)
- F. New integral colored conc. sidewalk
- G. 30 new bollards
- H. Trees and perennials
- I. Remove exst. street parking pvmt and curb. Construct new street parking (unit pvmt) w/ new mountable curb
- J. 12 new benches
- K. 6 new trash receptacles
- L. New parking meter system

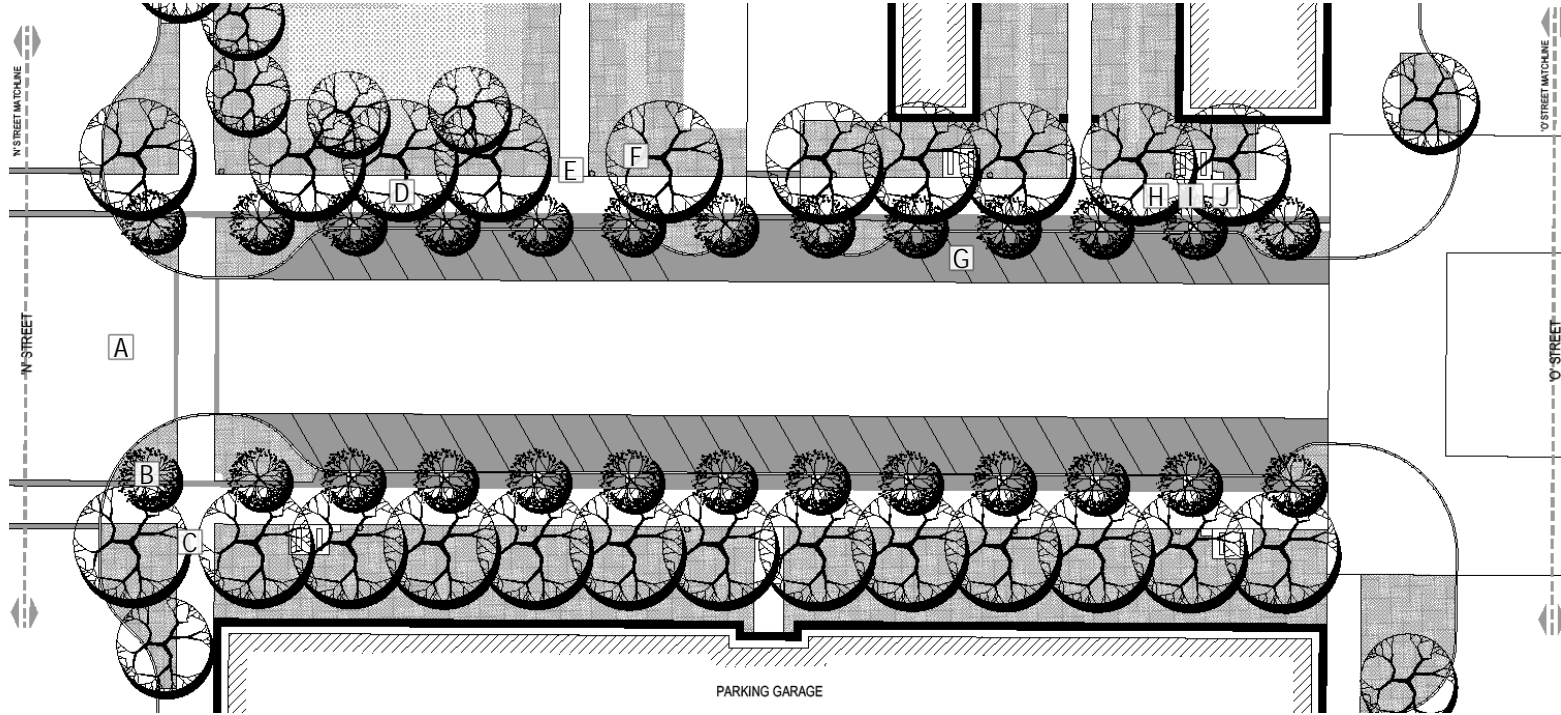


CENTENNIAL MALL

'N' STREET - 'O' STREET

LEGEND:

- A. Remove existing street pvmt. Construct new street pvmt (stenciled colored conc.) Crosswalks included as different color/pattern than street
- B. 26 new Silva Cell trees (curb location)
- C. 2 new Silva Cell overstory trees (curb location)
- D. New pervious sidewalk unit pvmt (both sides)
- E. 14 new pedestrian ornamental lights (both sides)
- F. Trees and perennials
- G. Remove exst. street parking pvmt and curb. Construct new street parking (unit pvmt) w/ new mountable curb
- H. 10 new benches
- I. 6 new trash receptacles
- J. New parking meter system

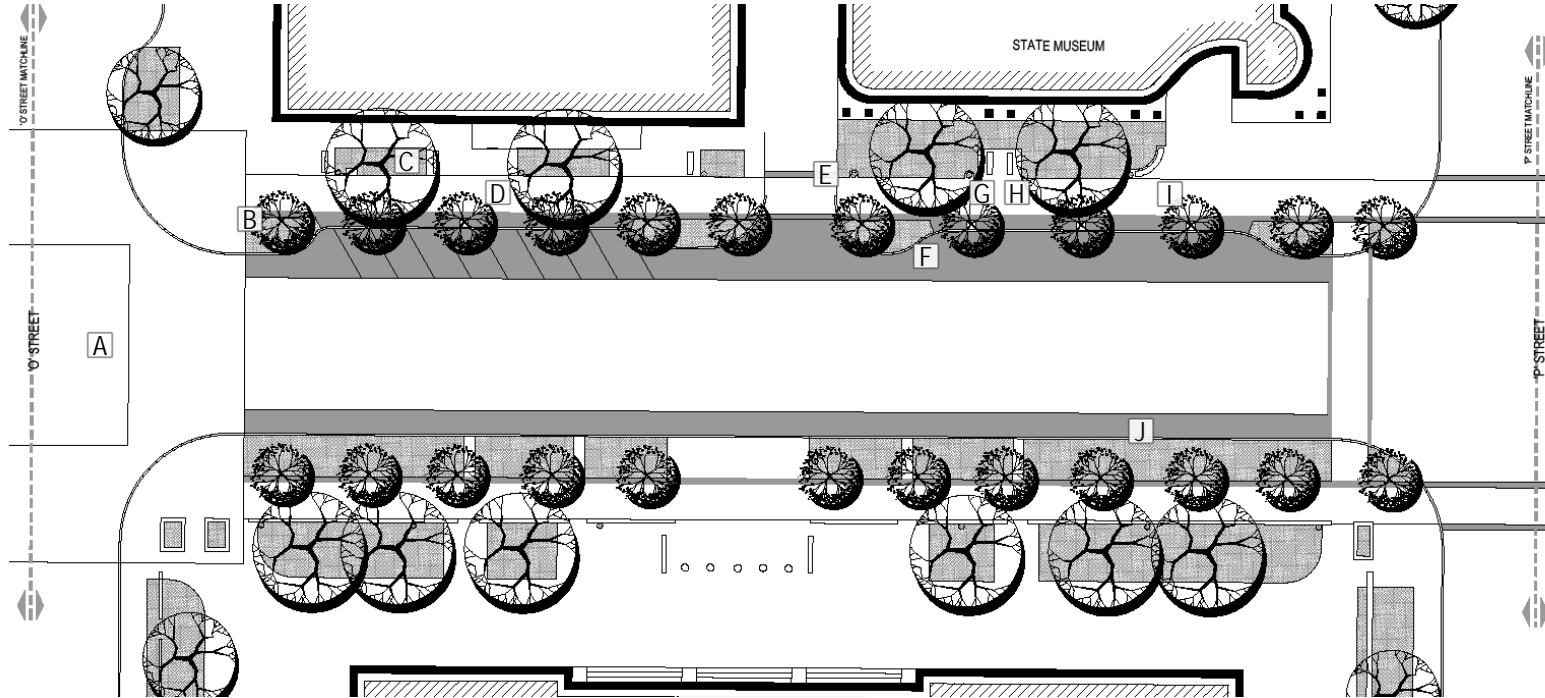


CENTENNIAL MALL

'O' STREET - 'P' STREET

LEGEND:

- A. Remove existing 'O' Street brick pvmt and replace with stenciled colored concrete
- B. 24 new Silva Cell trees (curb location)
- C. 4 new Silva Cell overstory trees
- D. New pervious sidewalk unit pvmt
- E. 12 new pedestrian ornamental lights (both sides)
- F. Remove exst. Street parking pvmt and curb. Construct new street parking (unit pvmt) w/ new mountable curb
- G. 6 new benches
- H. 2 new trash receptacles
- I. New turf and irrigation (including soil placement)
- J. New street curb

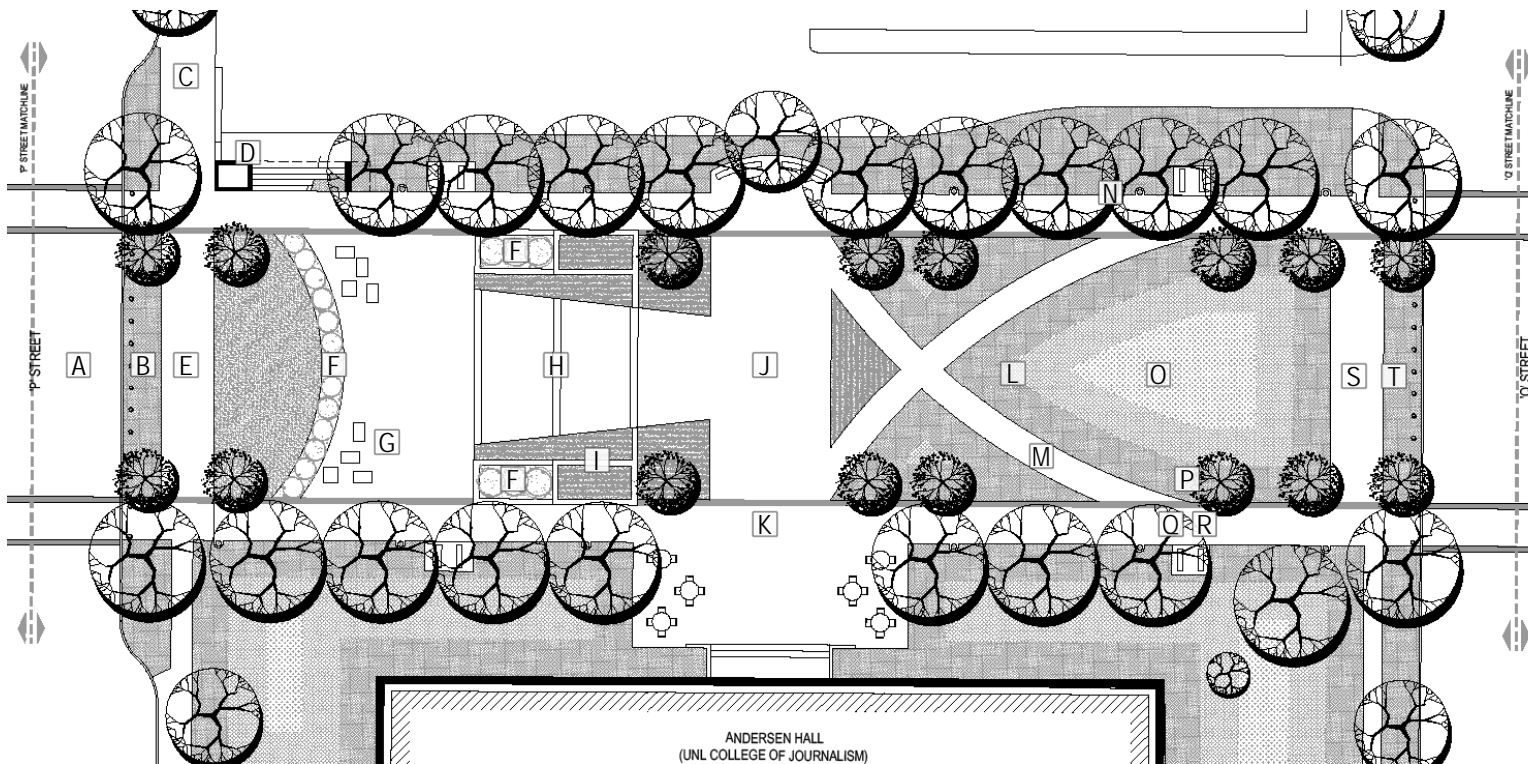


CENTENNIAL MALL

'P' STREET - 'Q' STREET

LEGEND:

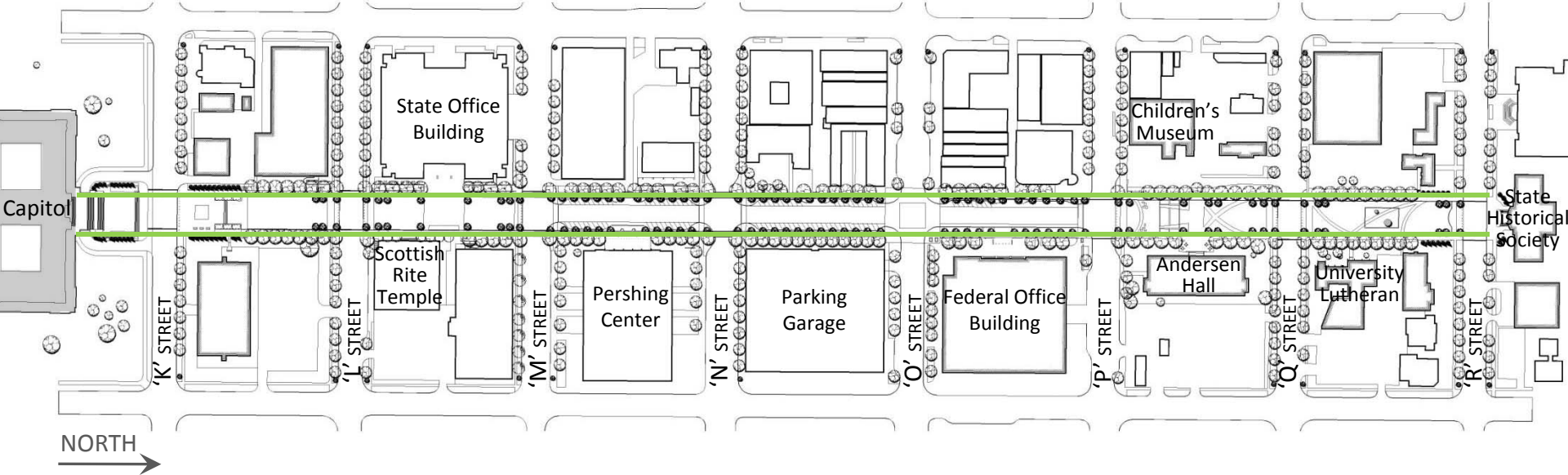
- A. Remove existing street pvmt. Construct new street pvmt (stenciled colored conc.)
- B. 15 new bollards
- C. New streetscape to Children's Museum entrance
- D. New fountain pump bldg.
- E. New unit pvmt
- F. New water feature
- G. Stone seating blocks
- H. New plaza steps w/ stone veneer
- I. New planter walls, both sides
- J. New unit pvmt
- K. New sidewalk both sides (colored conc.)
- L. Earthwork/grading
- M. New colored conc. sidewalk
- N. 11 new pedestrian ornamental lights
- O. Turf and irrigation
- P. Trees and perennials
- Q. 12 new benches
- R. 6 new trash receptacles
- S. New unit pvmt
- T. 15 new bollards



THEMATIC SETTINGS AND DEVELOPMENT

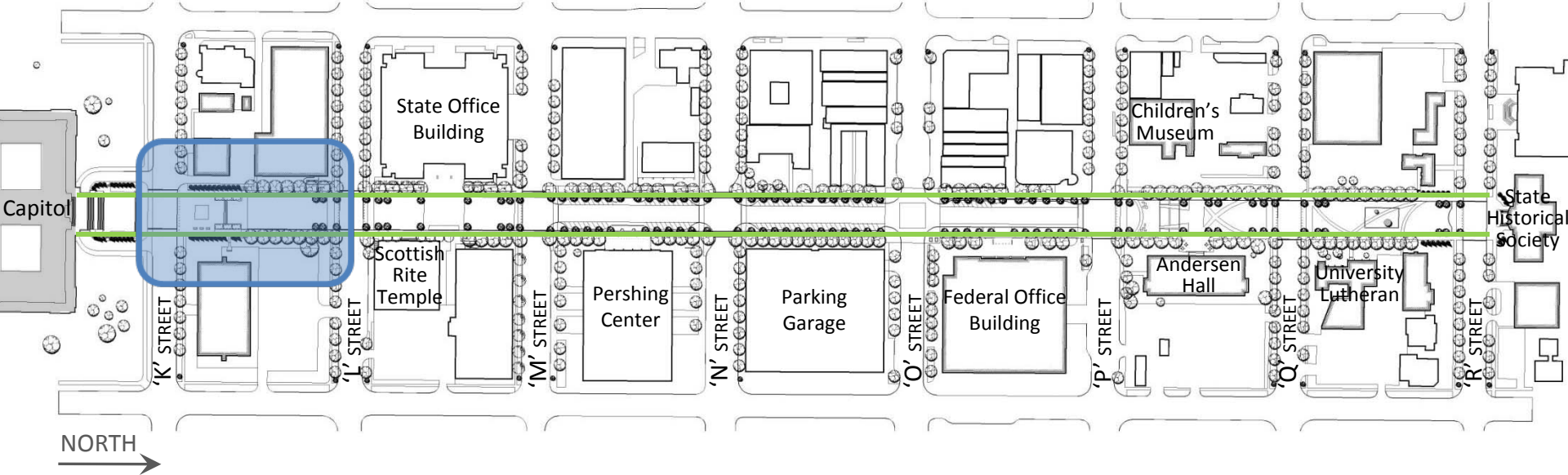


CENTENNIAL MALL



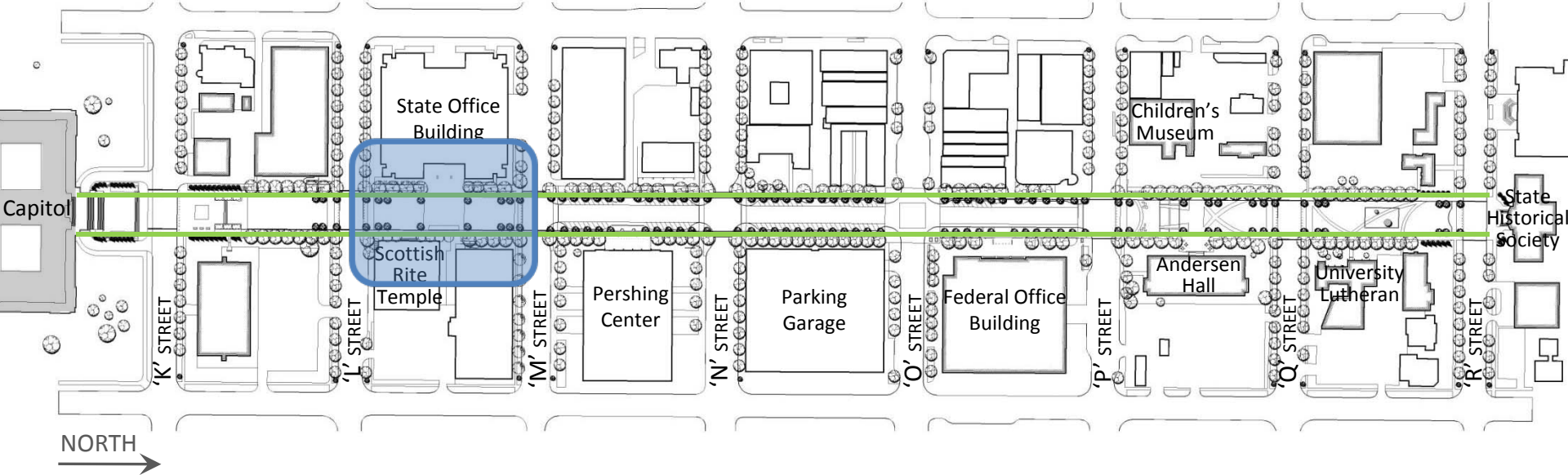
The Extension of the Capitol Building Through the Length of Centennial Mall

CENTENNIAL MALL



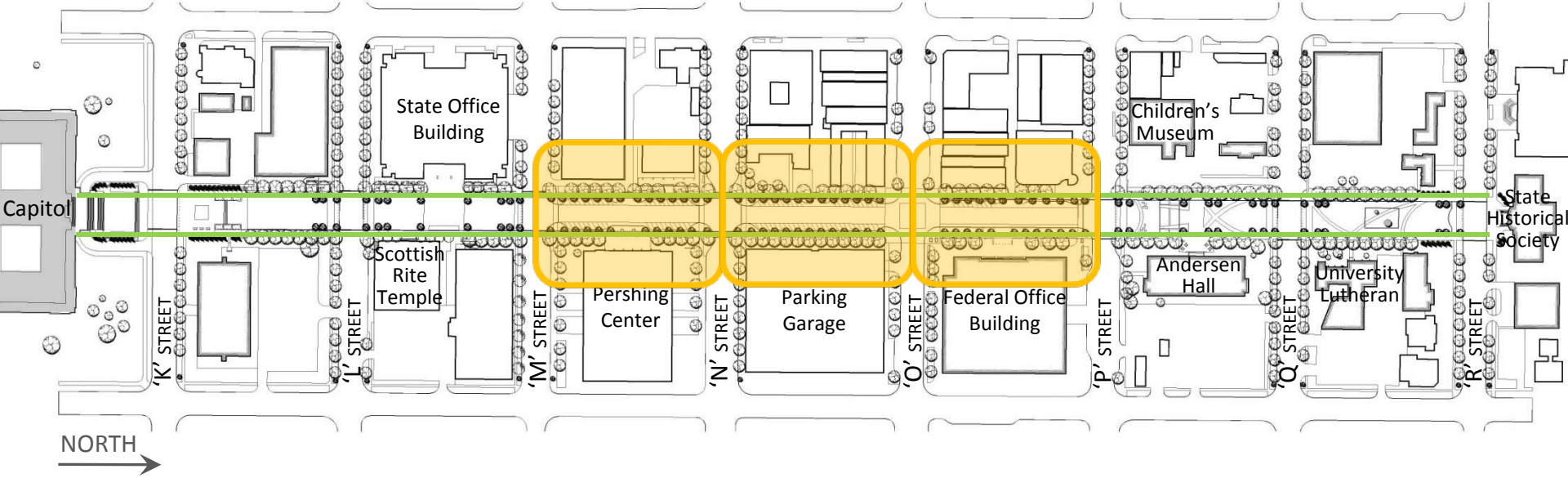
Memorial to Nebraska's
Government, Leaders and
Citizens

CENTENNIAL MALL



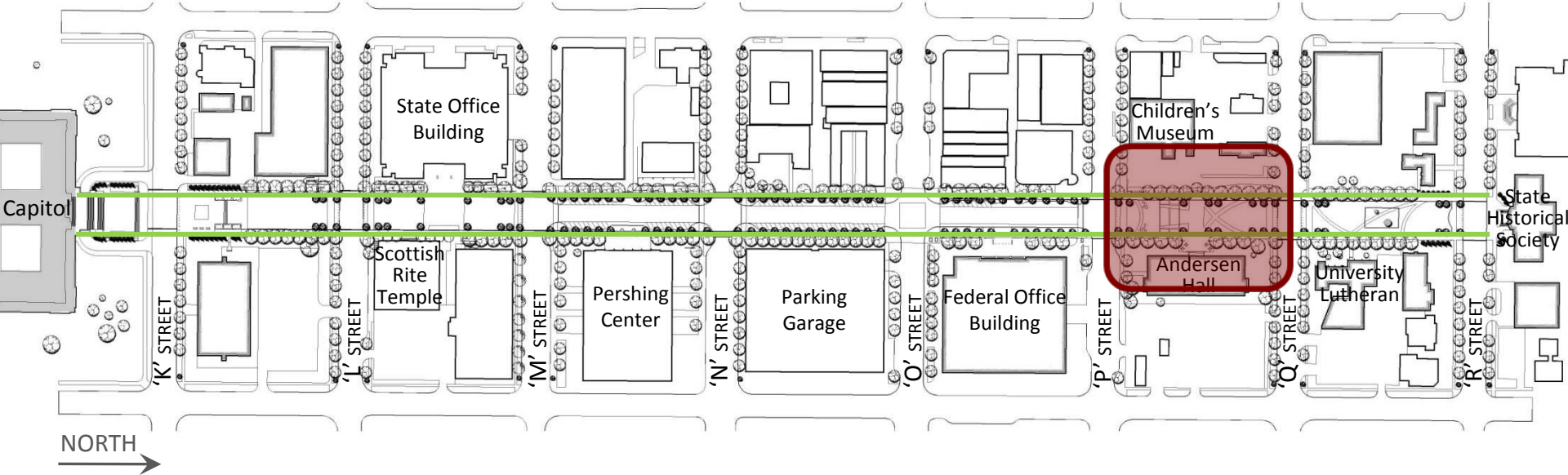
Tribute to the Stewardship
of Resources in Nebraska

CENTENNIAL MALL



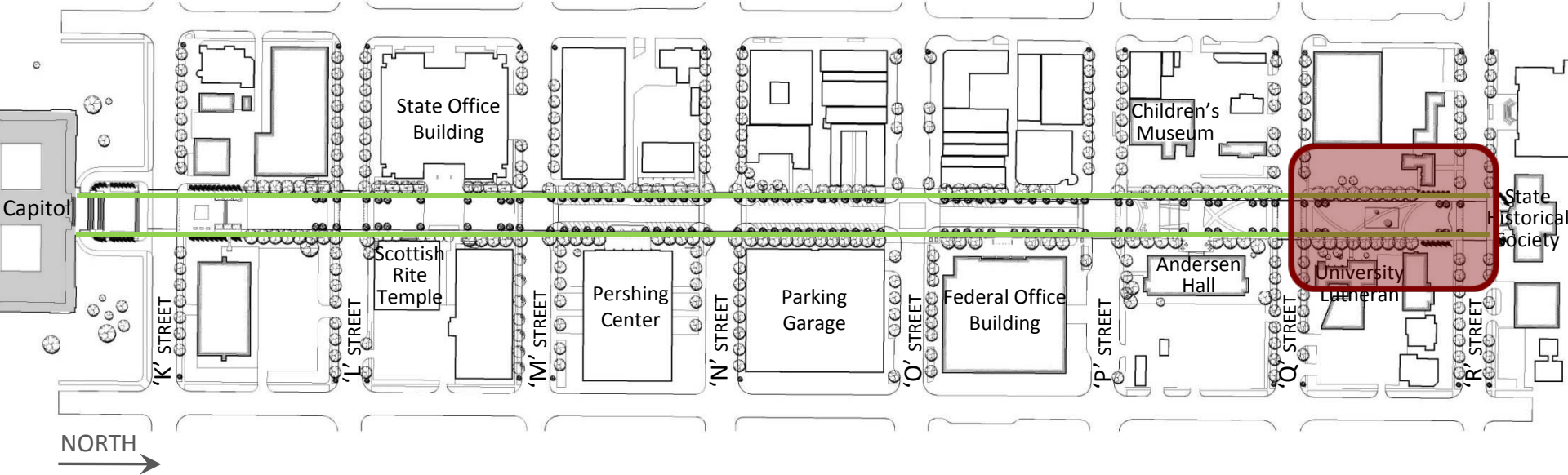
The Nebraska Community

CENTENNIAL MALL



Nebraska Cultivates Imagination / Spirit of Nebraska

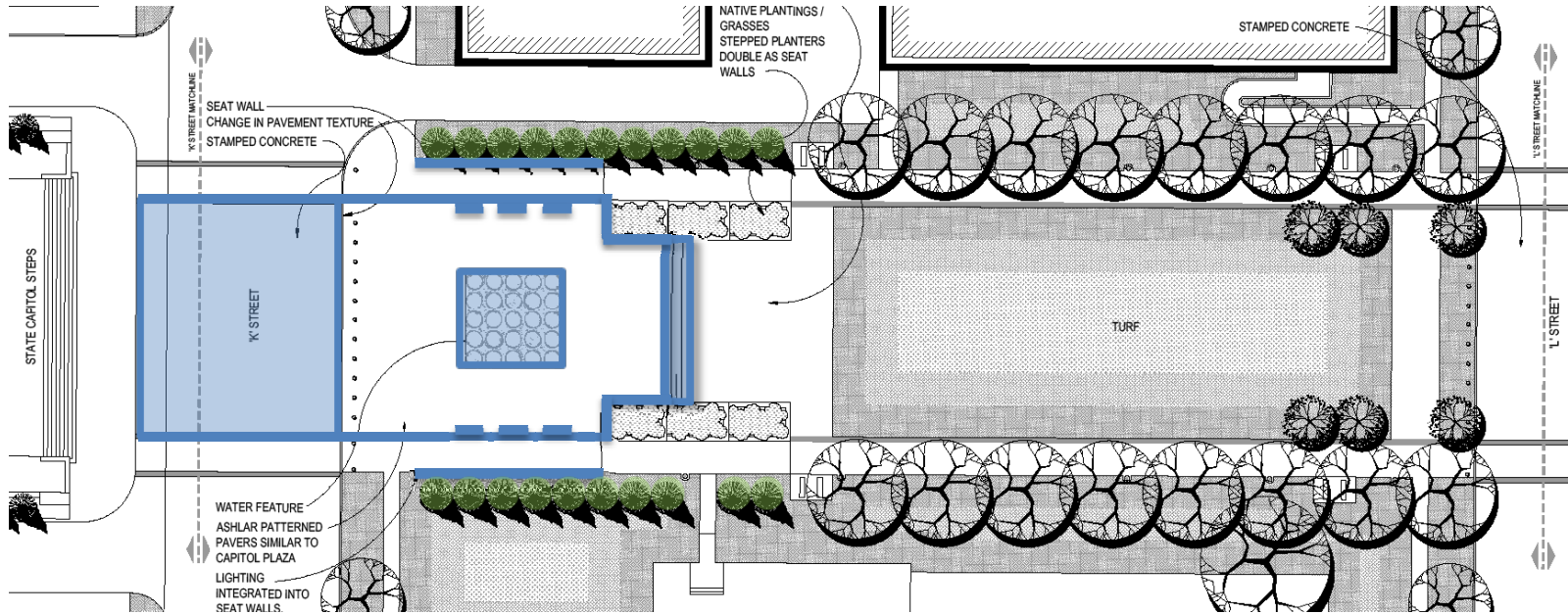
CENTENNIAL MALL



Nebraska Cultivates Ideas / Educates

CIVIC BLOCKS

'K' STREET - 'L' STREET



THEMATIC SETTINGS

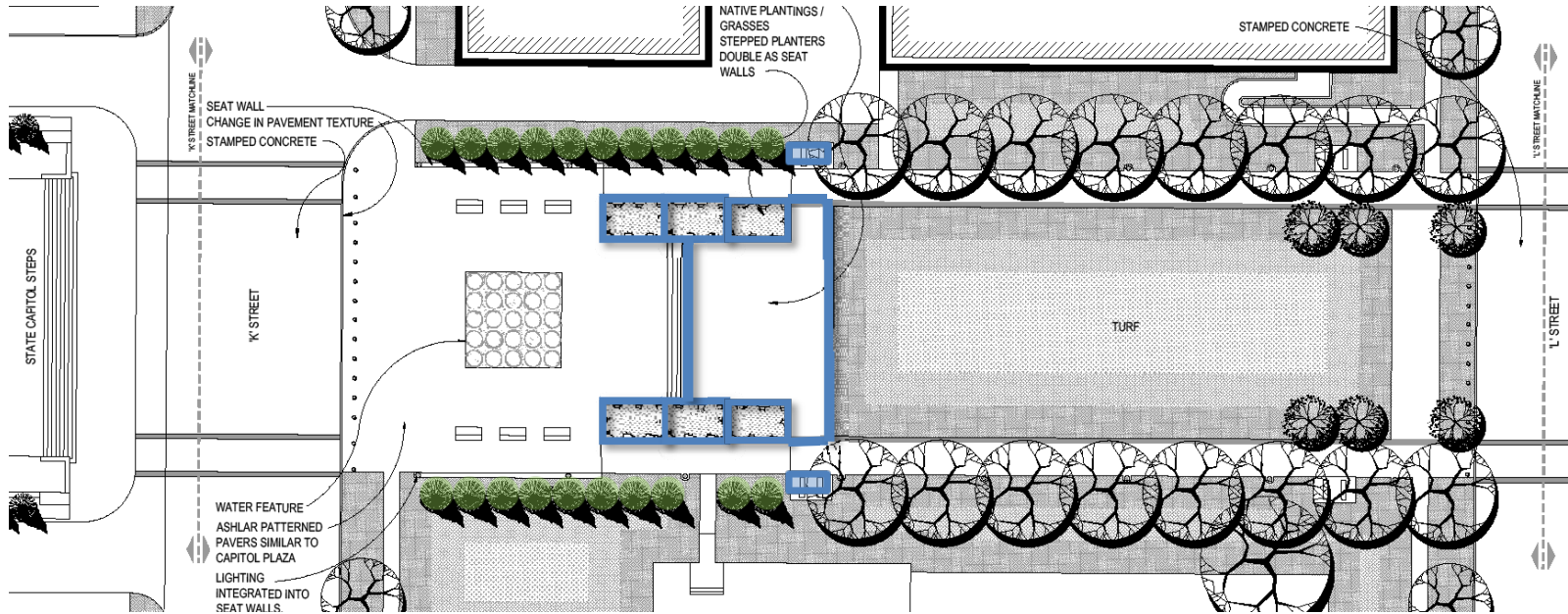
- South plaza
 - Ashlar street panel
 - Walls
 - Steps
 - Planter walls
- Stone benches
- Fountain
- Walkways / Bands
- Landscape / Ped. Lighting

THEMATIC DEVELOPMENT

- Tribute / Memorial to Nebraska's Government, Leaders, and Inhabitants / Citizens
 - Government / Statehood

CIVIC BLOCKS

'K' STREET - 'L' STREET



THEMATIC SETTINGS

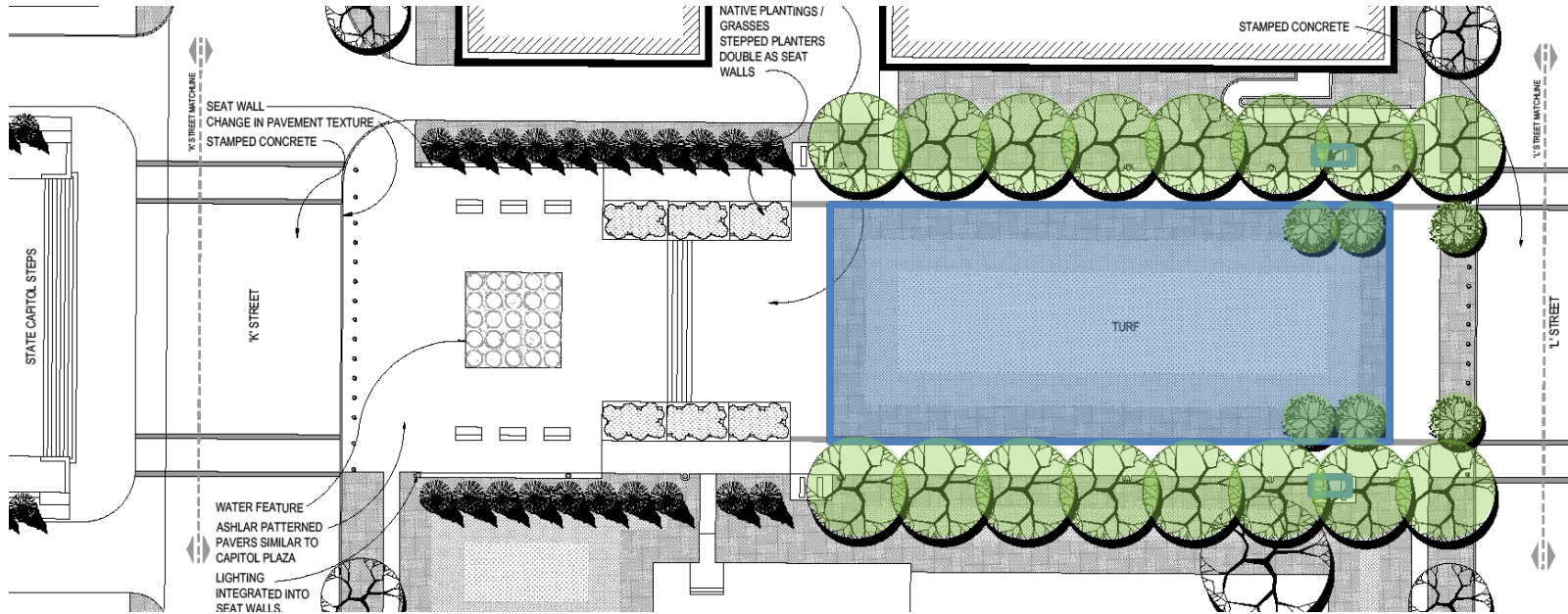
- South plaza
 - Planter wall
 - Walkways / Bands
 - Seating Nodes
 - Landscape
- Pedestrian Lighting

THEMATIC DEVELOPMENT

- Tribute / Memorial to Nebraska's Government, Leaders, and Inhabitants / Citizens
 - Leaders (not specific)
 - Firefighters, Police, Military, etc.

CIVIC BLOCKS

'K' STREET - 'L' STREET



THEMATIC SETTINGS

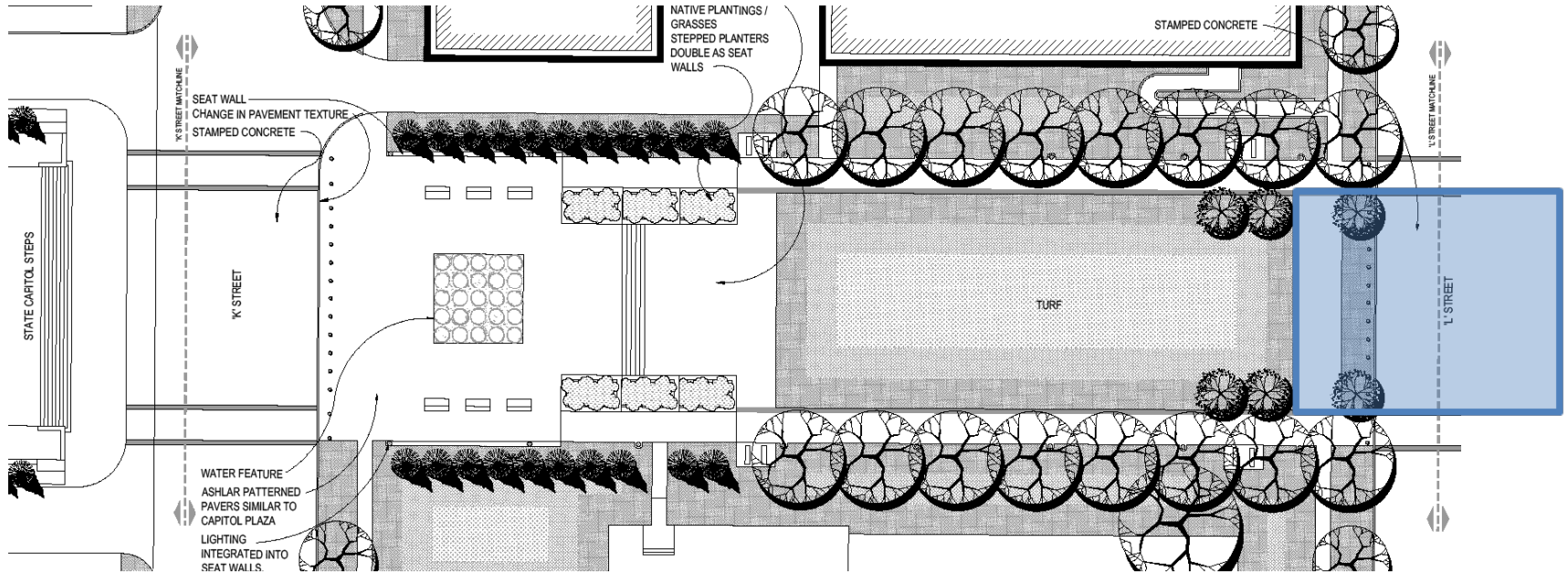
- Capitol Green
 - Seating Nodes
 - Walkways / Bands
 - Landscape
 - Pedestrian Lighting

THEMATIC DEVELOPMENT

- Tribute / Memorial to Nebraska's Government, Leaders, and Inhabitants / Citizens
 - Watchful Citizens

CIVIC BLOCKS

'K' STREET - 'L' STREET



THEMATIC SETTINGS

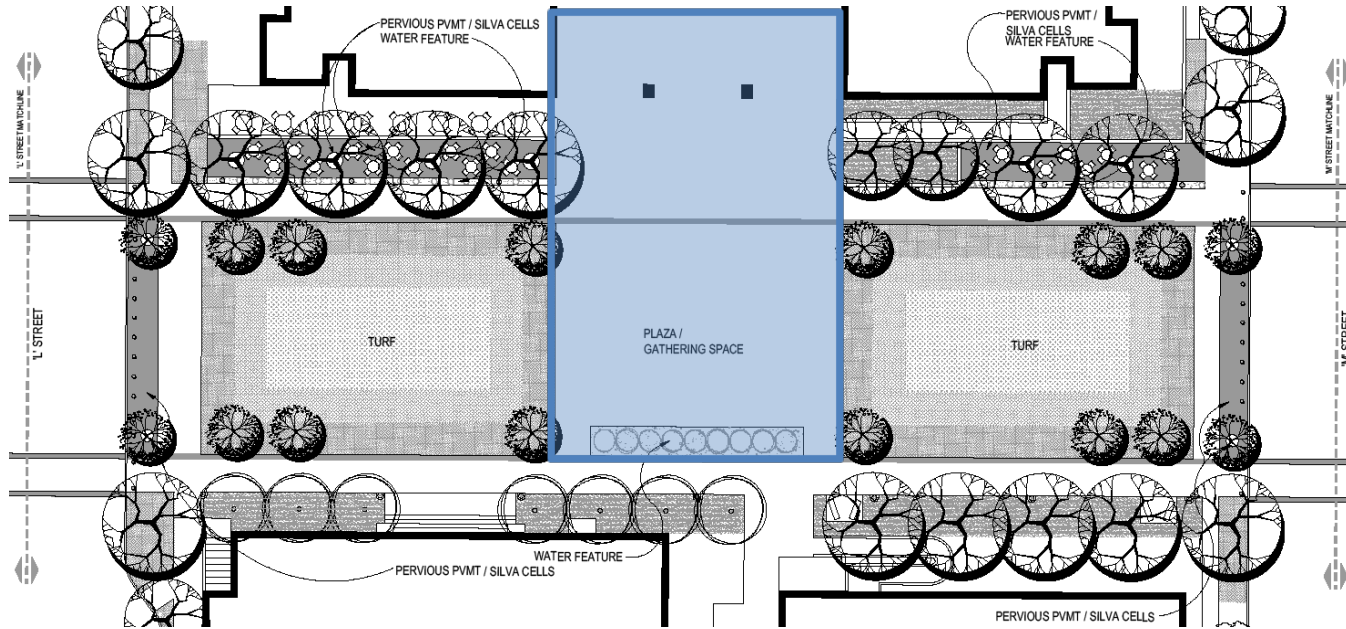
- Street panel

THEMATIC DEVELOPMENT

- Running theme
 - Landform / ecological / regional patterns

CIVIC BLOCKS

'L' STREET - 'M' STREET



THEMATIC SETTINGS

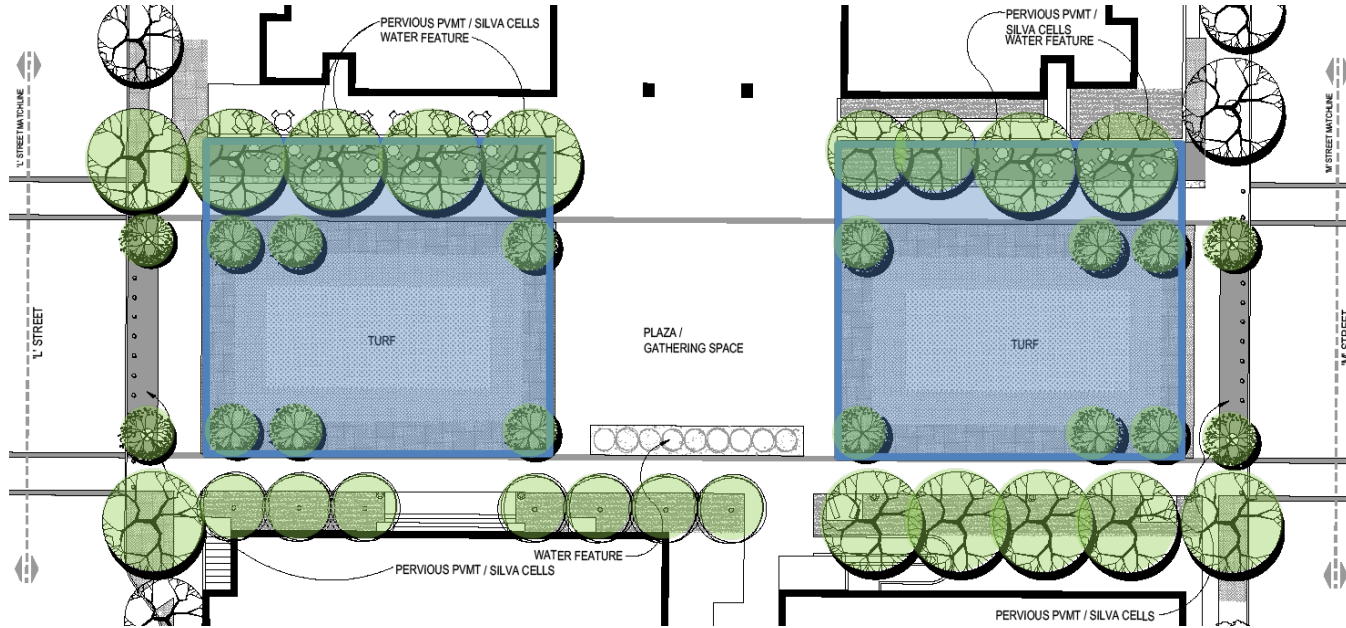
- Plaza pavement
 - Plaza pavement ornamentation
- Water feature
- Walkways / Bands
- Pedestrian Lighting

THEMATIC DEVELOPMENT

- Stewardship of Resources in Nebraska
 - Sustainable Opportunities
- Legacy of Nebraska's Agrarian Past
 - Management of Resources
 - Human Influence on the Land

CIVIC BLOCKS

'L' STREET - 'M' STREET



THEMATIC SETTINGS

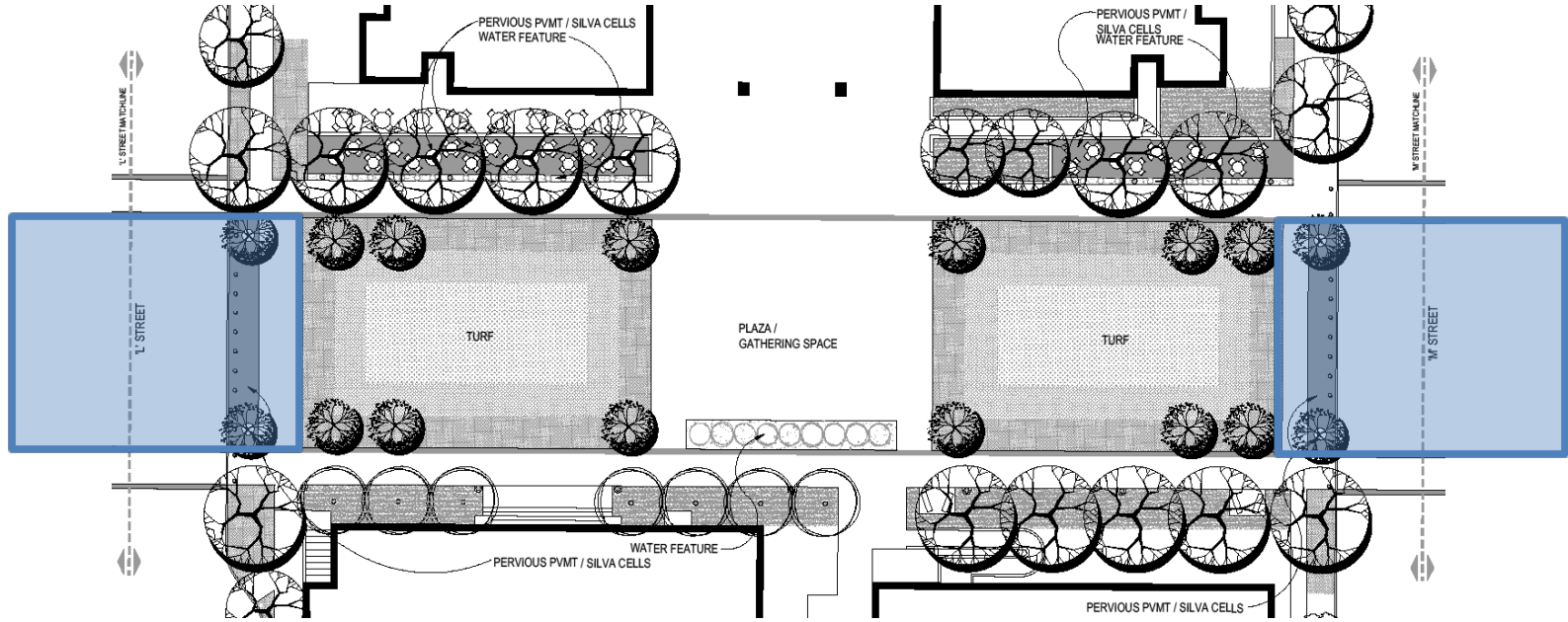
- Lawn
 - Walls
 - Water features
 - Walkways / Bands
 - Pedestrian Lighting

THEMATIC DEVELOPMENT

- Stewardship of Resources in Nebraska
 - Sustainable Opportunities
- Legacy of Nebraska's Agrarian Past
 - Conservation & Preservation

CIVIC BLOCKS

'L' STREET - 'M' STREET



THEMATIC SETTINGS

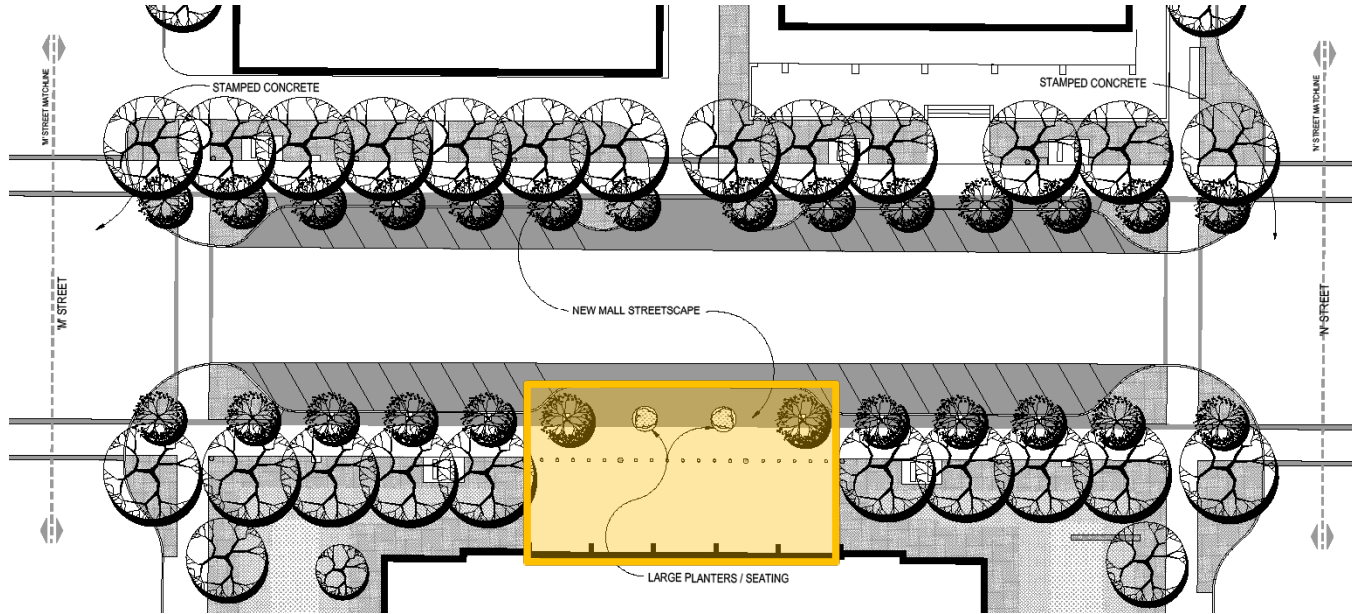
- Street panels

THEMATIC DEVELOPMENT

- Running theme
 - Landform / ecological / regional patterns

COMMUNITY BLOCKS

'M' STREET - 'N' STREET



THEMATIC SETTINGS

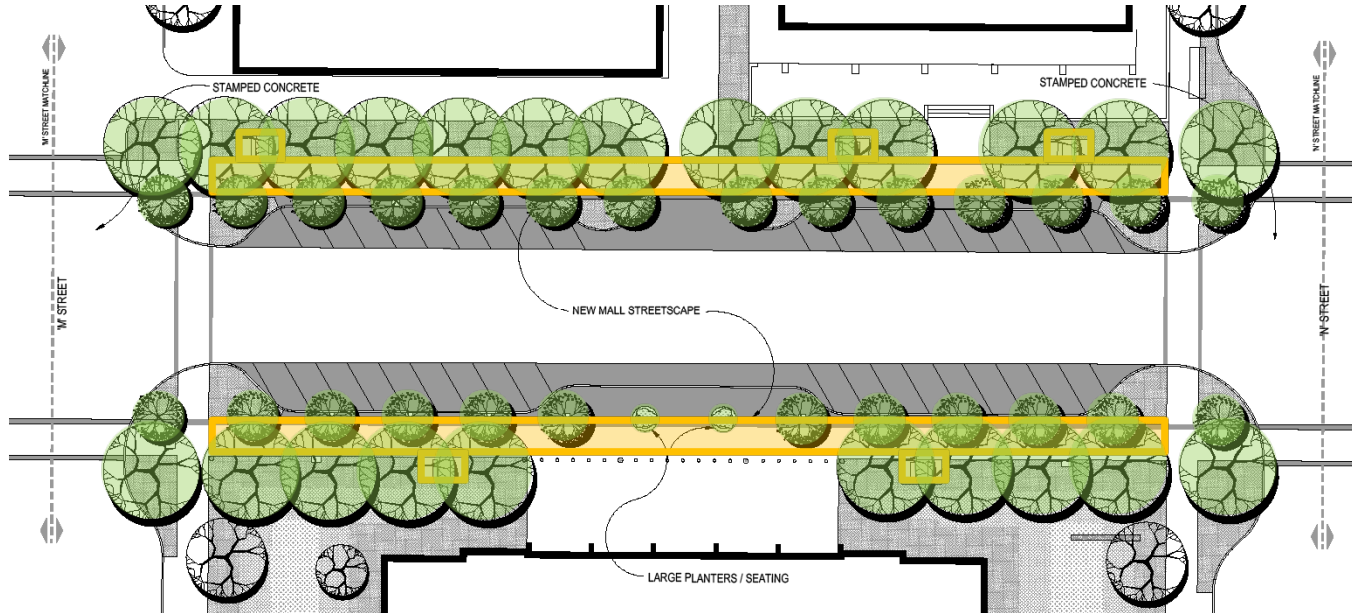
- Pershing plaza
 - Walkways / Bands
 - Landscape
 - Pedestrian Lighting

THEMATIC DEVELOPMENT

- Current Nebraska Community
 - Counties
 - NRD Districts
 - Efforts / Groups that have influenced the NE Community
 - The Arts

COMMUNITY BLOCKS

‘M’ STREET - ‘N’ STREET



THEMATIC SETTINGS

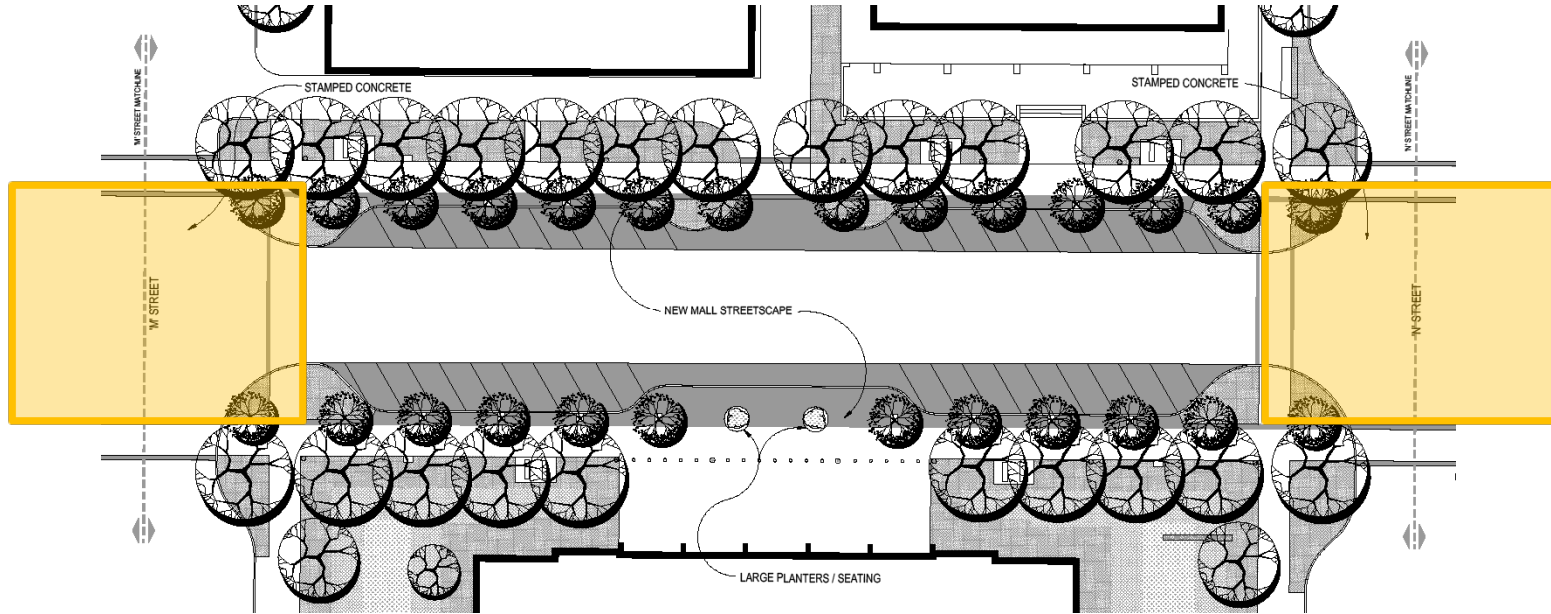
- Street
- Walkways / Bands
- Seating Nodes
- Landscape
- Lighting

THEMATIC DEVELOPMENT

- Current Nebraska Community
 - Counties
 - NRD Districts
 - Efforts / Groups / Ethnic groups that have influenced the NE Community

COMMUNITY BLOCKS

'M' STREET - 'N' STREET



THEMATIC SETTINGS

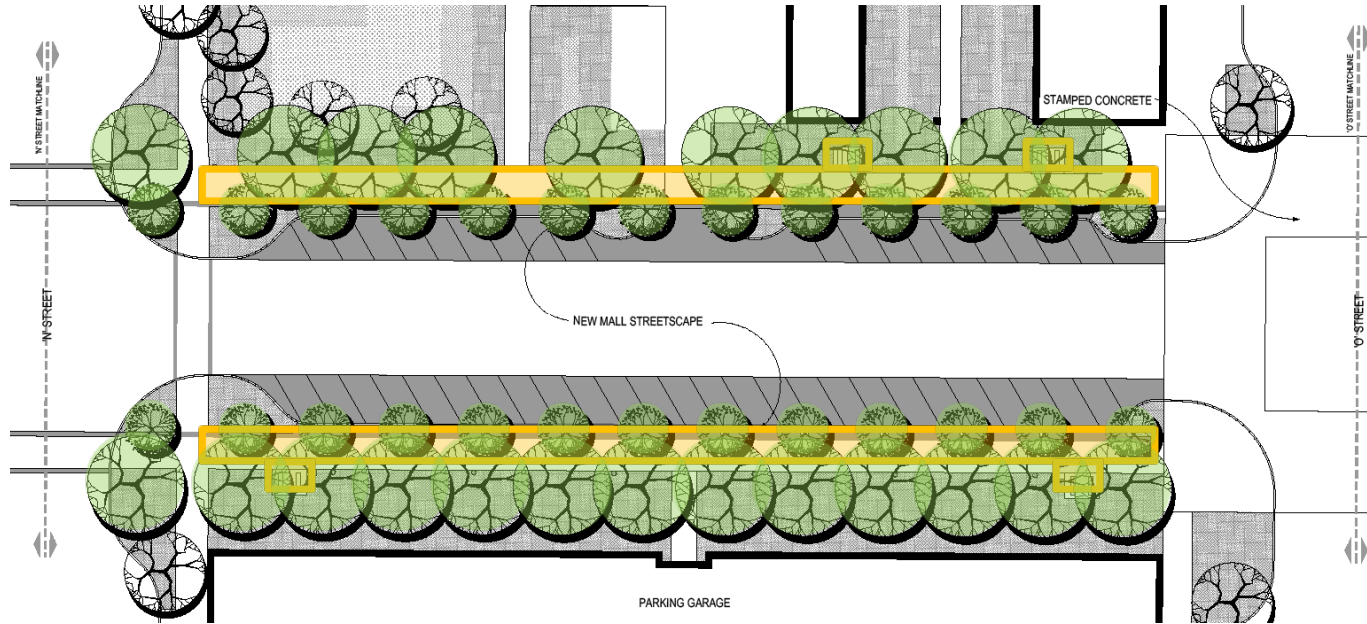
- Street panels

THEMATIC DEVELOPMENT

- Running theme
 - Landform / ecological / regional patterns

COMMUNITY BLOCKS

'N' STREET - 'O' STREET



THEMATIC SETTINGS

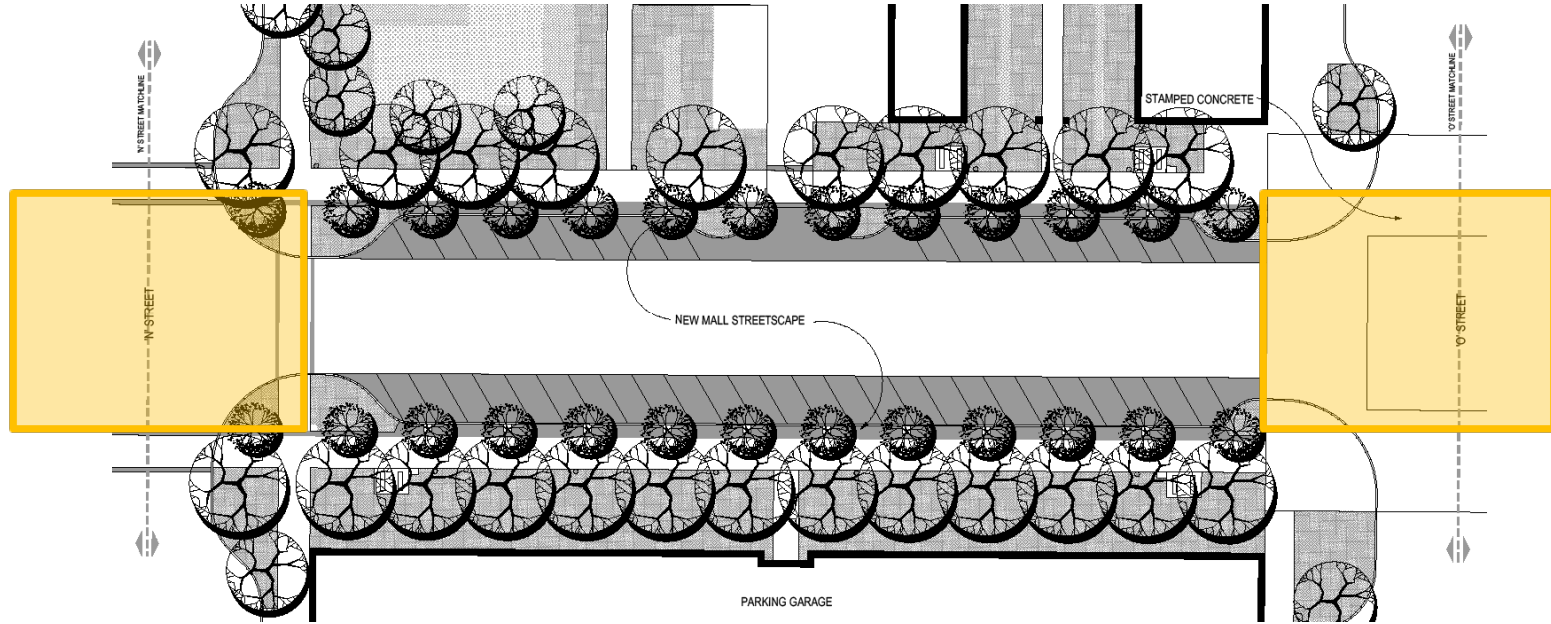
- Walkways / Bands
- Seating Nodes
- Landscape
- Pedestrian Lighting

THEMATIC DEVELOPMENT

- Current Nebraska Community
 - Counties
 - NRD Districts
 - Efforts / Groups / Ethnic groups that have influenced the NE Community

COMMUNITY BLOCKS

'N' STREET - 'O' STREET



THEMATIC SETTINGS

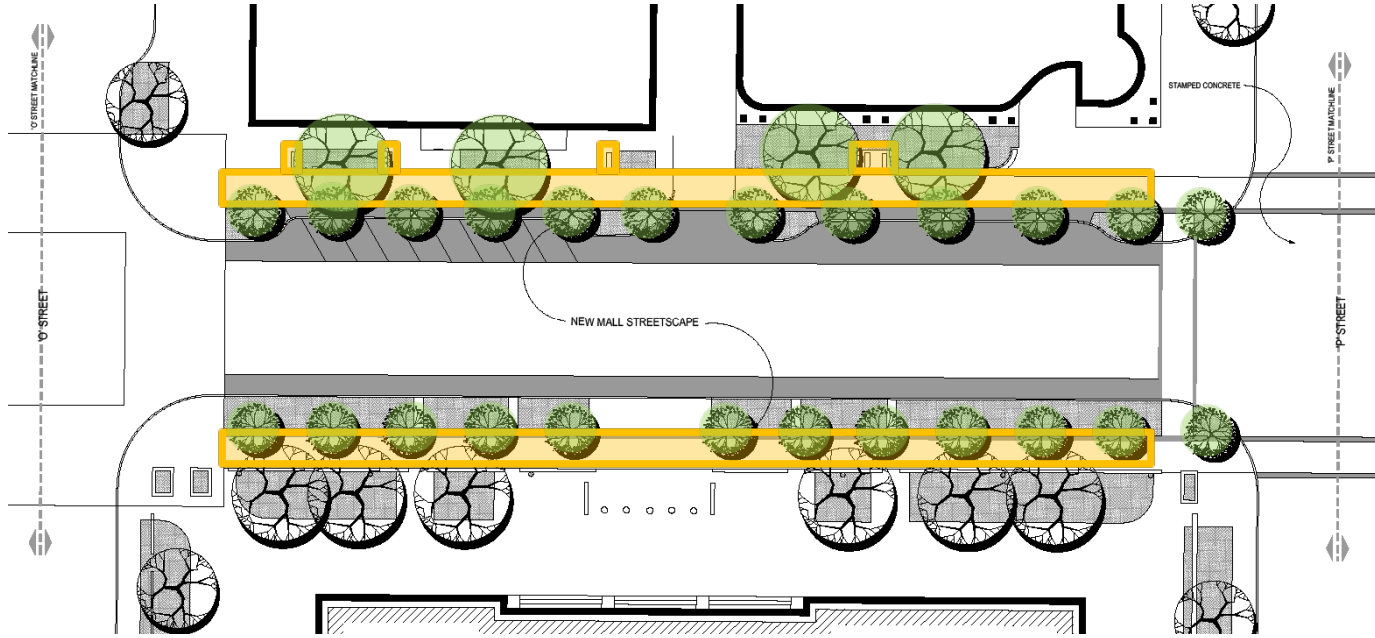
- Street panels

THEMATIC DEVELOPMENT

- Running theme
 - Landform / ecological / regional patterns

COMMUNITY BLOCKS

'O' STREET - 'P' STREET



THEMATIC SETTINGS

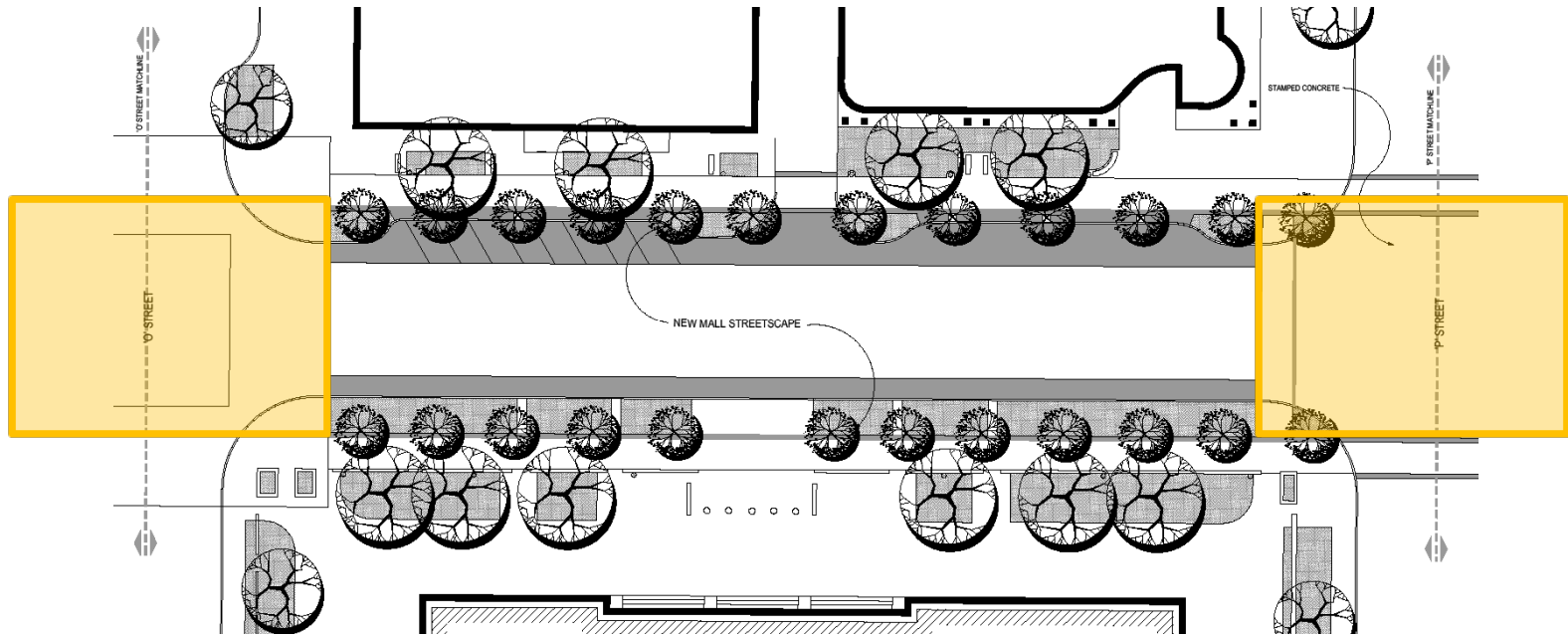
- Walkways / Bands
- Seating Nodes
- Landscape
- Pedestrian Lighting

THEMATIC DEVELOPMENT

- Current Nebraska Community
 - Counties
 - NRD Districts
 - Efforts / Groups that have influenced the NE Community

COMMUNITY BLOCKS

'O' STREET - 'P' STREET



THEMATIC SETTINGS

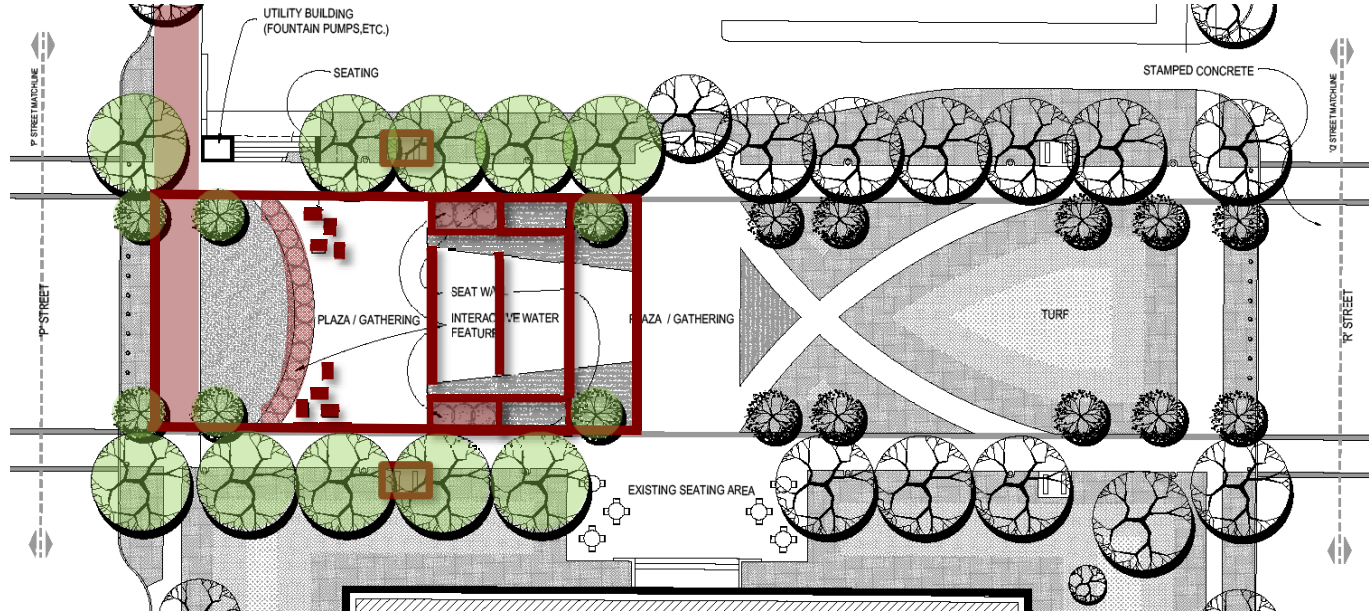
- Street panels

THEMATIC DEVELOPMENT

- Running theme
 - Landform / ecological / regional patterns

CAMPUS BLOCKS

'P' STREET - 'Q' STREET



THEMATIC SETTINGS

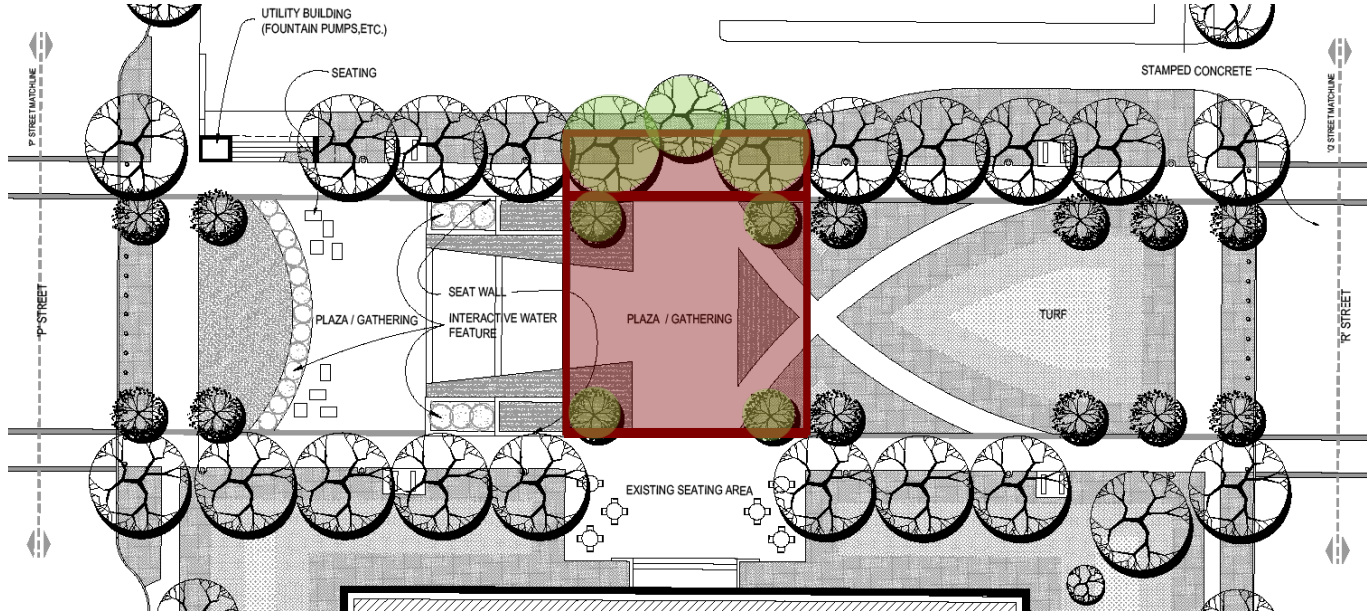
- Children's Plaza
 - Water features
 - Planter Walls
 - Steps
 - Seating
- Walkway / Band
- Seating Nodes
- Landscape
- Pedestrian Lighting

THEMATIC DEVELOPMENT

- Nebraska Cultivates Imagination / Ideas
- Spirit of Nebraska / Enduring Human Spirit
 - Raw Imagination / Ideas

CAMPUS BLOCKS

'P' STREET - 'Q' STREET



THEMATIC SETTINGS

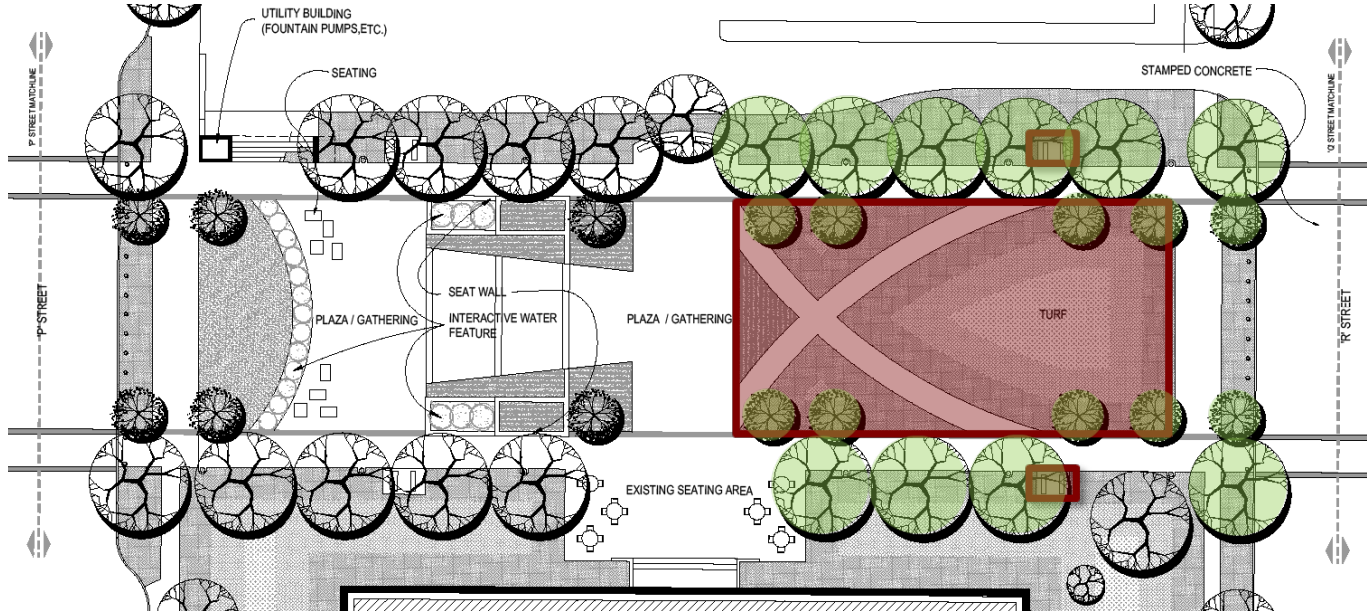
- Plaza
 - Seating
 - Walkway / Band
 - Landscape
 - Pedestrian Lighting

THEMATIC DEVELOPMENT

- Nebraska Cultivates Imagination / Ideas
- Spirit of Nebraska / Enduring Human Spirit
 - Developing Imagination / Ideas

CAMPUS BLOCKS

'P' STREET - 'Q' STREET



THEMATIC SETTINGS

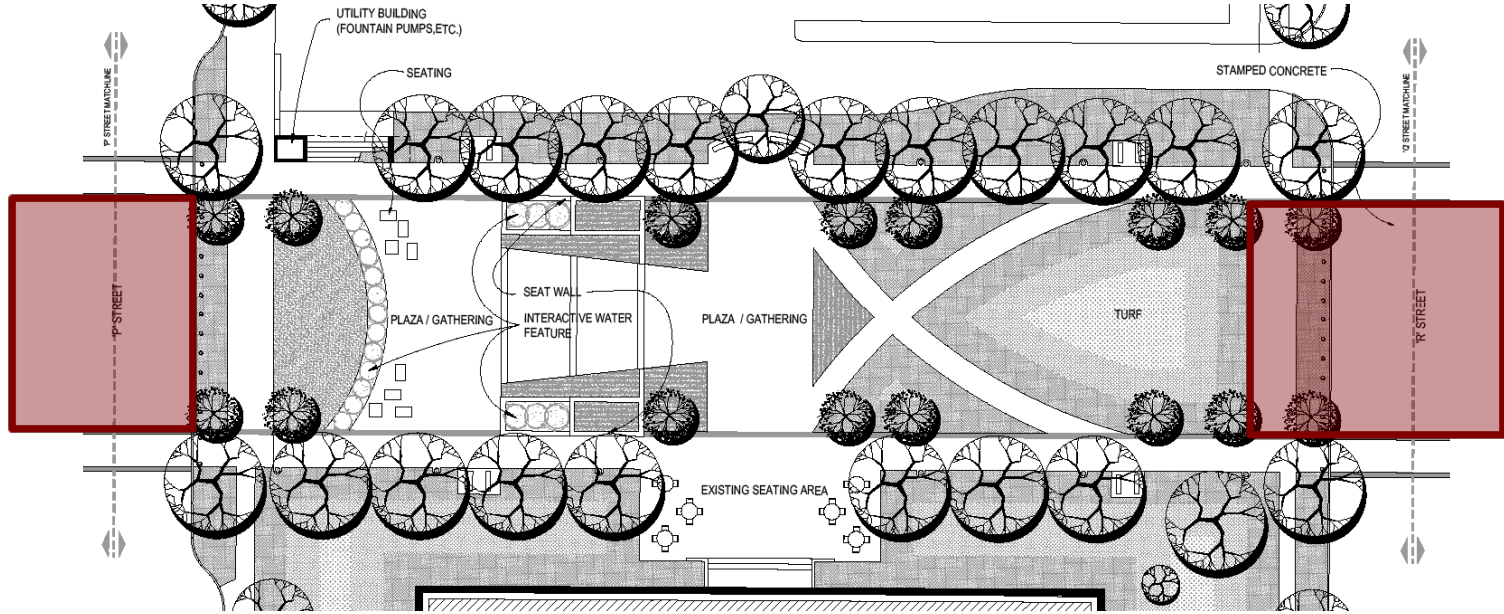
- Lawn
- Walkway / Band
- Seating Nodes
- Landscape
- Pedestrian Lighting

THEMATIC DEVELOPMENT

- Nebraska Cultivates Imagination / Ideas
- Spirit of Nebraska / Enduring Human Spirit
 - Refined Imagination / Ideas

CAMPUS BLOCKS

'P' STREET - 'Q' STREET



THEMATIC SETTINGS

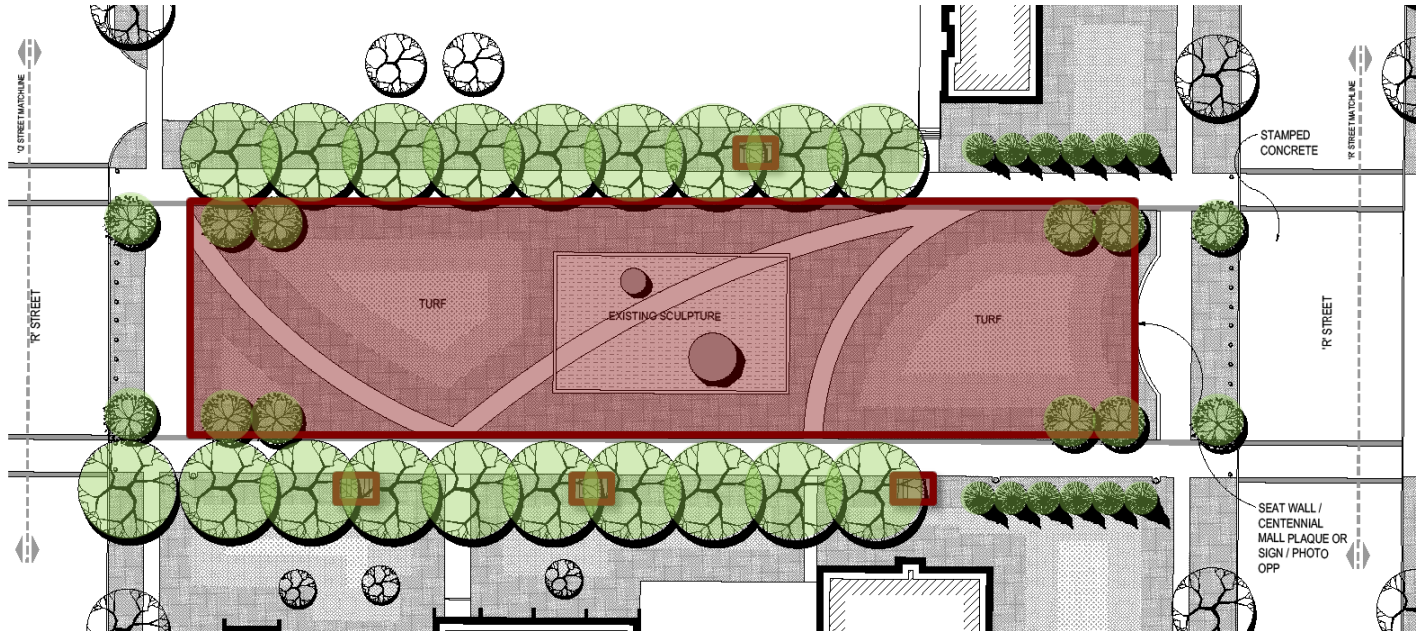
- Street panels

THEMATIC DEVELOPMENT

- Running theme
 - Landform / ecological / regional patterns

CAMPUS BLOCKS

'Q' STREET - 'R' STREET



THEMATIC SETTINGS

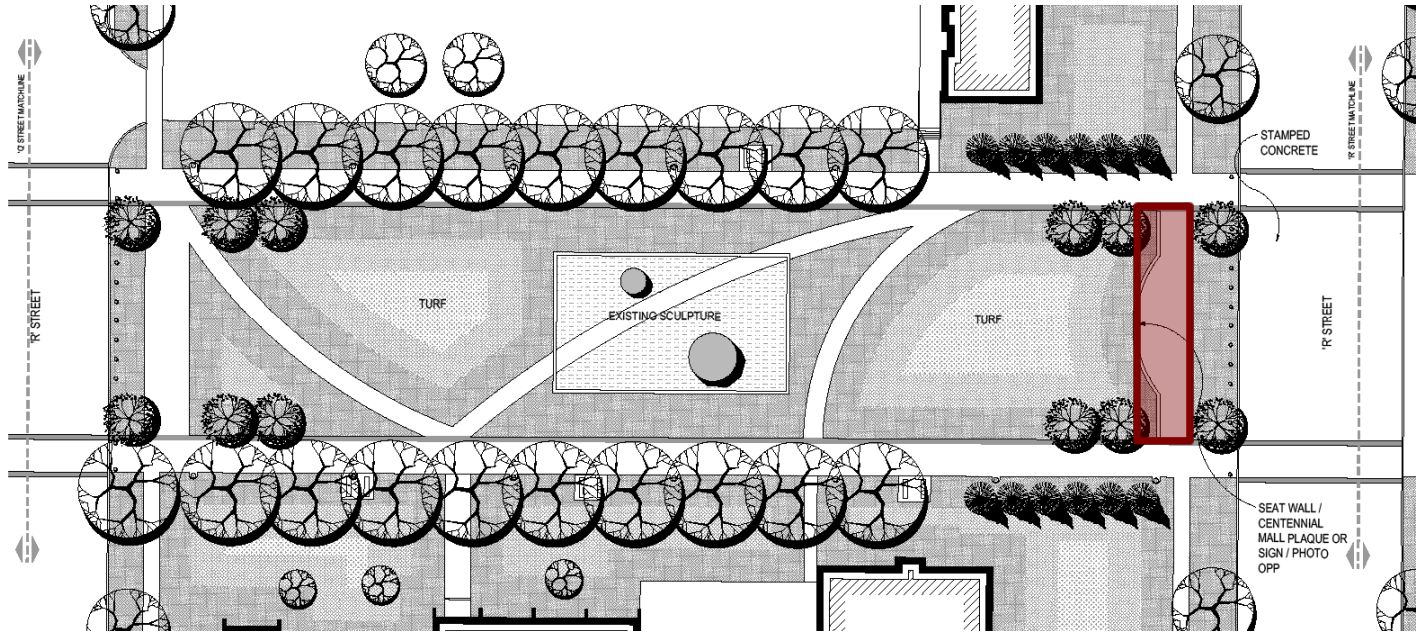
- Lawn
- Walkway / Band
- Seating Nodes
- Landscape
- Pedestrian Lighting

THEMATIC DEVELOPMENT

- Nebraska Educates
- Ideas Develop Here
- Looking Toward the Future

CAMPUS BLOCKS

'Q' STREET - 'R' STREET



THEMATIC SETTINGS

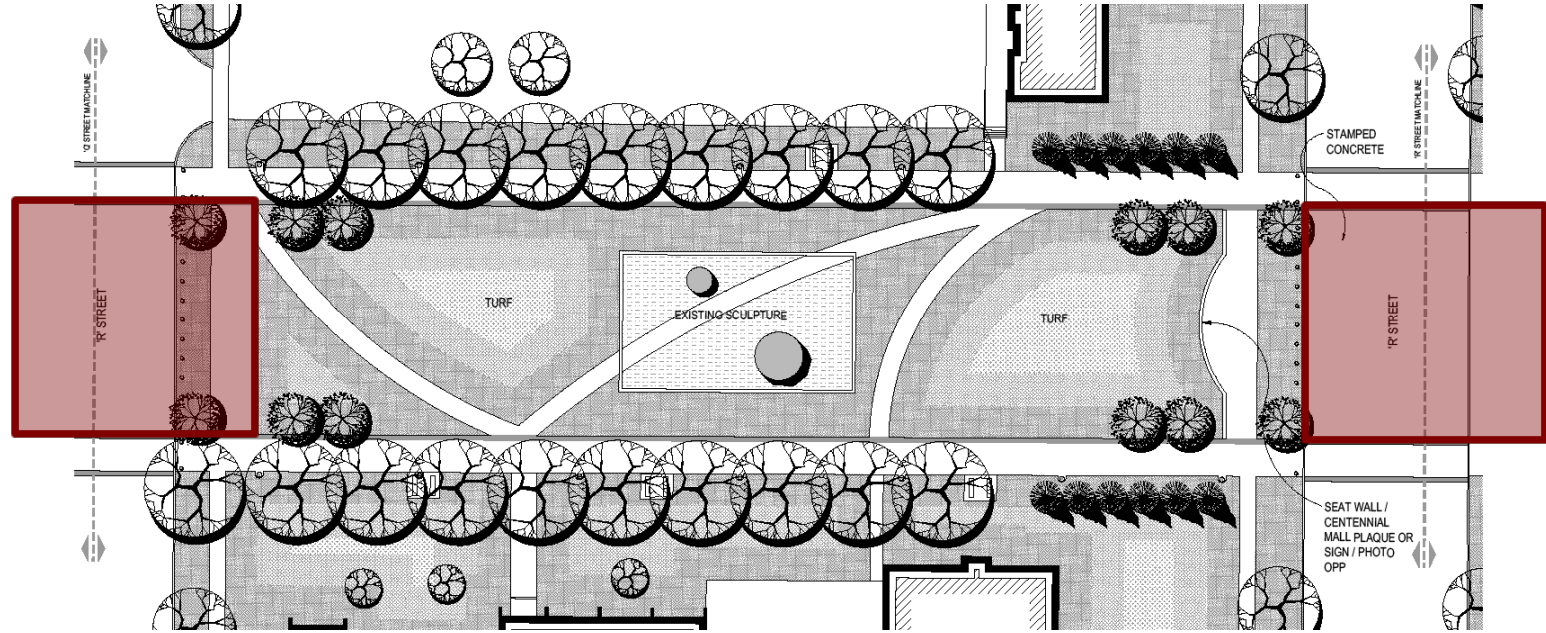
- Wall / Sign

THEMATIC DEVELOPMENT

- Nebraska Educates
- Ideas Develop Here
- Looking Toward the Future
- Direct Connection to Capitol

CAMPUS BLOCKS

'Q' STREET - 'R' STREET



THEMATIC SETTINGS

- Street panels

THEMATIC DEVELOPMENT

- Running theme
 - Landform / ecological / regional patterns