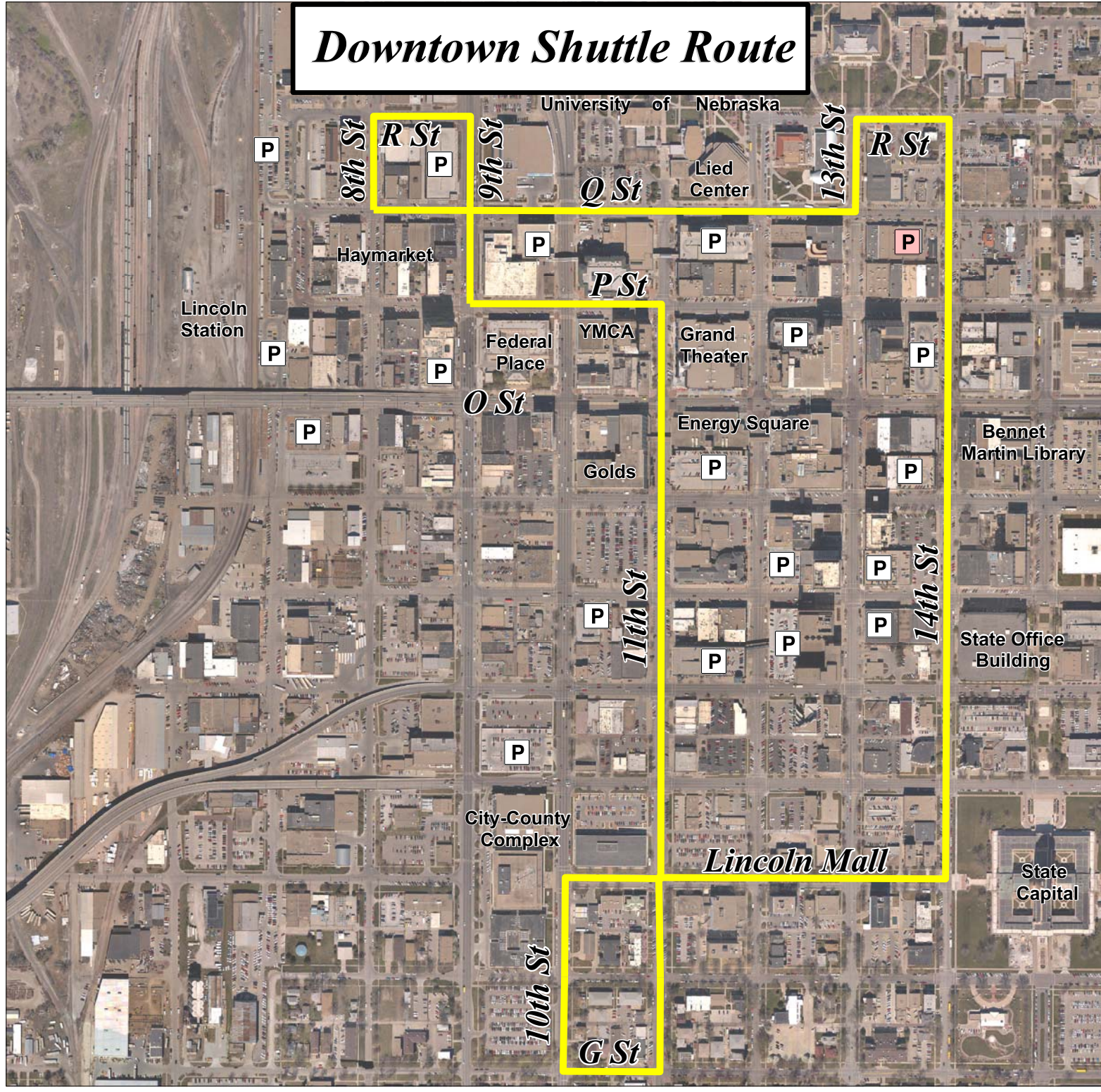


Downtown Shuttle Route

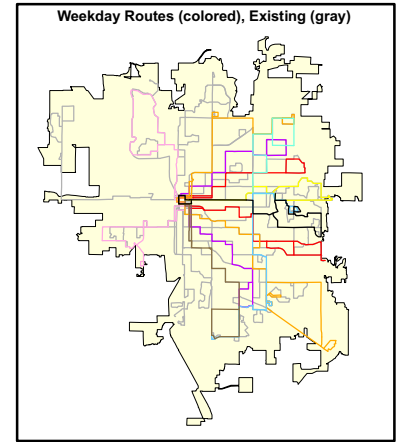


City of Lincoln Transit Development Plan

DAYTIME WEEKDAY SHUTTLE (6:20 AM - 7 PM)

- EXISTING PARKING
- FUTURE PARKING

Aerial Date: April 2005



Service Information:

Downtown Shuttle: Daytime Shuttle-13 Hour Service Day
 Monday through Friday (6 a.m. to 7 p.m.)
 20 Minute Off-Peak Service
 10 Minute Peak Service (2 Hours at Lunch)
 No Saturday Daytime Service
 No Fares

