



Proposed Transit Service Concept

Transit Development Plan (TDP) Study

Open House Presentation
March 28, 2007



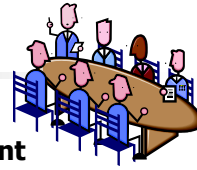
Transit Development Plan Study Purpose

- Near- and long-term policies and actions
- Enhance service and improve efficiency
- Detailed public involvement effort
 - public open houses
 - stakeholder meetings
 - drop-in sessions
 - public meetings of Advisory Committee
 - on-board user survey



Transit Development Plan Advisory Committee

- Jane Stricker, Citizen
- Dallas McGee, Urban Development Department
- Randy Hoskins, Public Works & Utilities
- Kevin Johnson, Citizen
- Patte Newman, City Council
- Jennifer Dam, UNL Institute for Research and Planning
- Beatty Brasch, StarTran Advisory Board
- Susan Epps, StarTran Advisory Board
- Jill Flagel, StarTran Advisory Board
- Rod Griess, StarTran Advisory Board
- Tamara Wellman, StarTran Advisory Board
- Kim Phelps, StarTran Advisory Board
- Nye Bond, StarTran Advisory Board



Transit Development Plan Work Items

- Service standards and policies
- Comprehensive Operations Analysis (COA)
- Management and funding options
- Near-term, revenue neutral service proposal at current funding levels
- Long-term service options



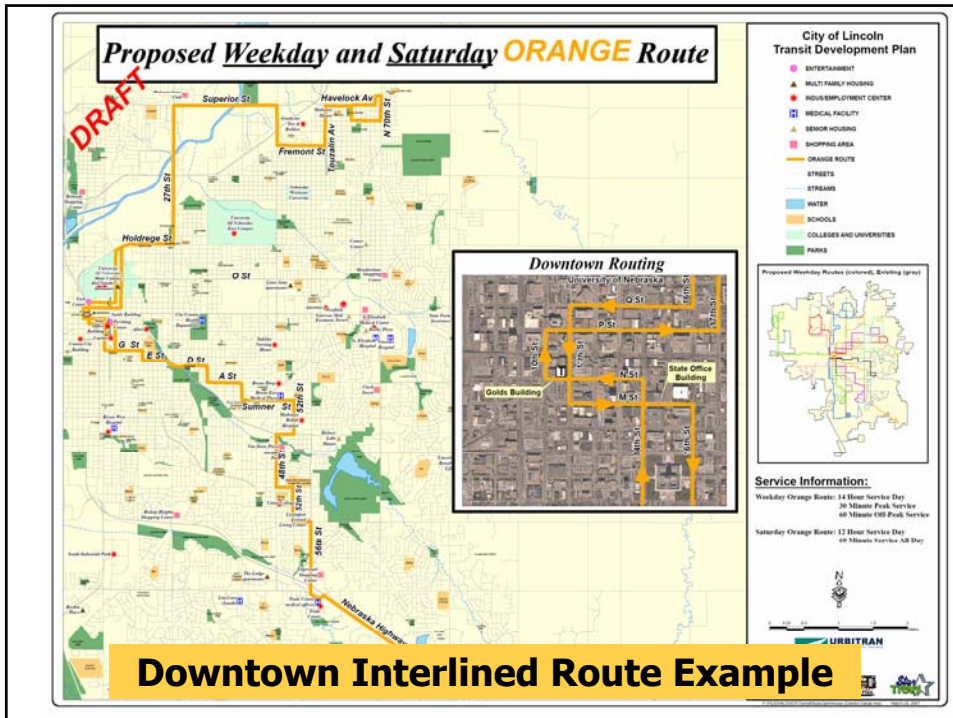
TDP Study Status



DRAFT Near-Term Service Proposal

- More efficient and enhanced fixed-route bus services
- New neighborhood routes
- Enhanced Downtown shuttle services
- Revenue neutral strategy using current funding levels

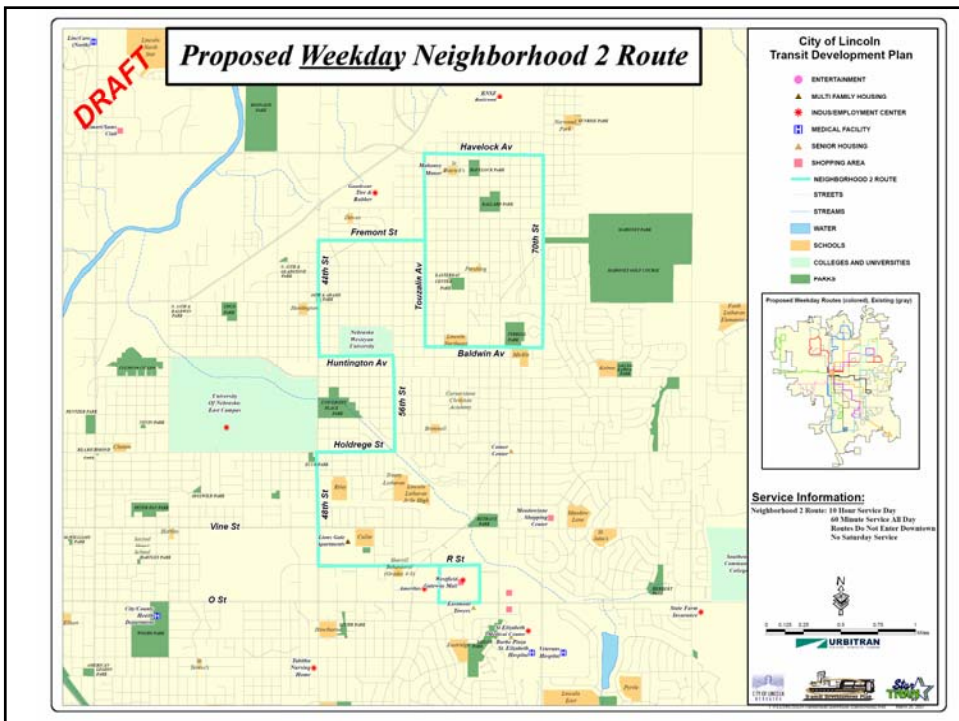
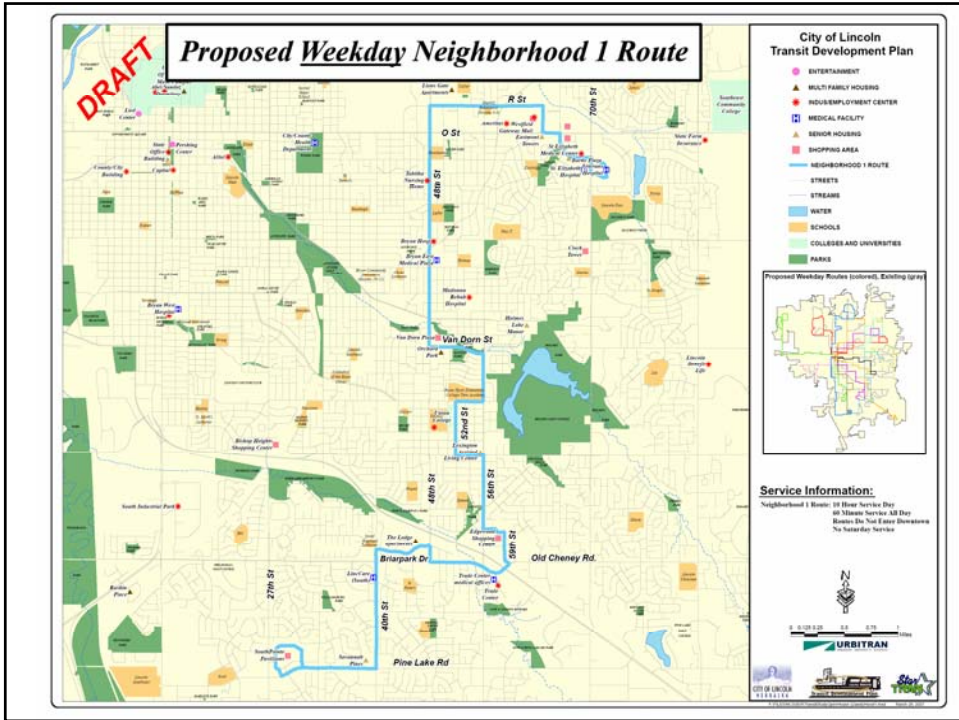




DRAFT Weekday Neighborhood Routes Proposal

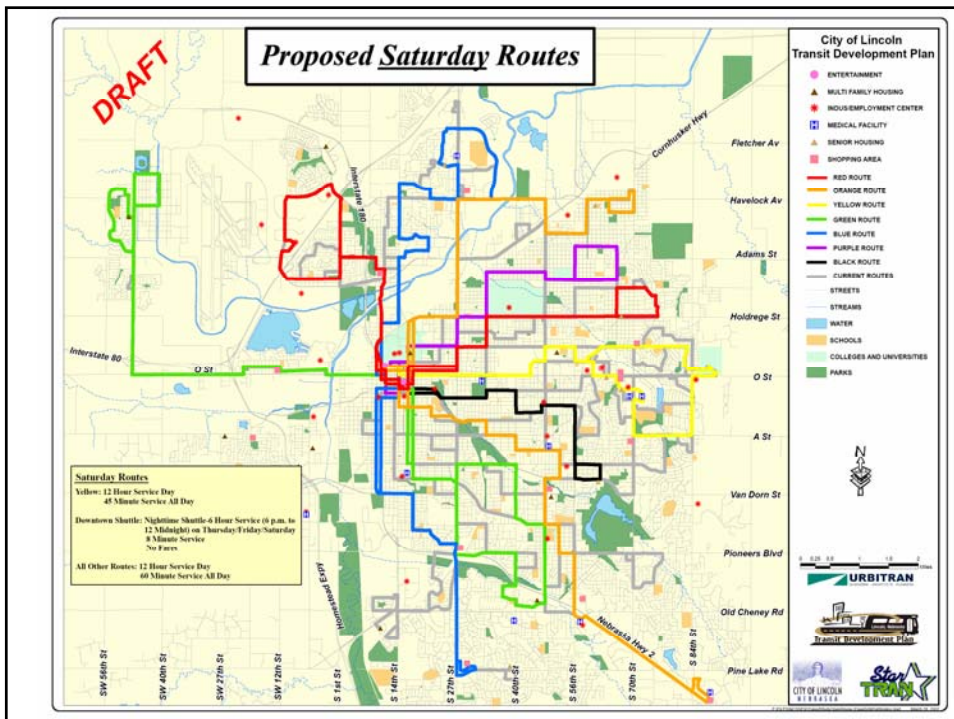
- Two neighborhood routes
 - South and east neighborhoods to South Pointe Pavilions and Westfield Gateway
 - Northeast neighborhoods via Westfield Gateway
- Routes do not enter Downtown
- 60 minute service
- 10 hour service day





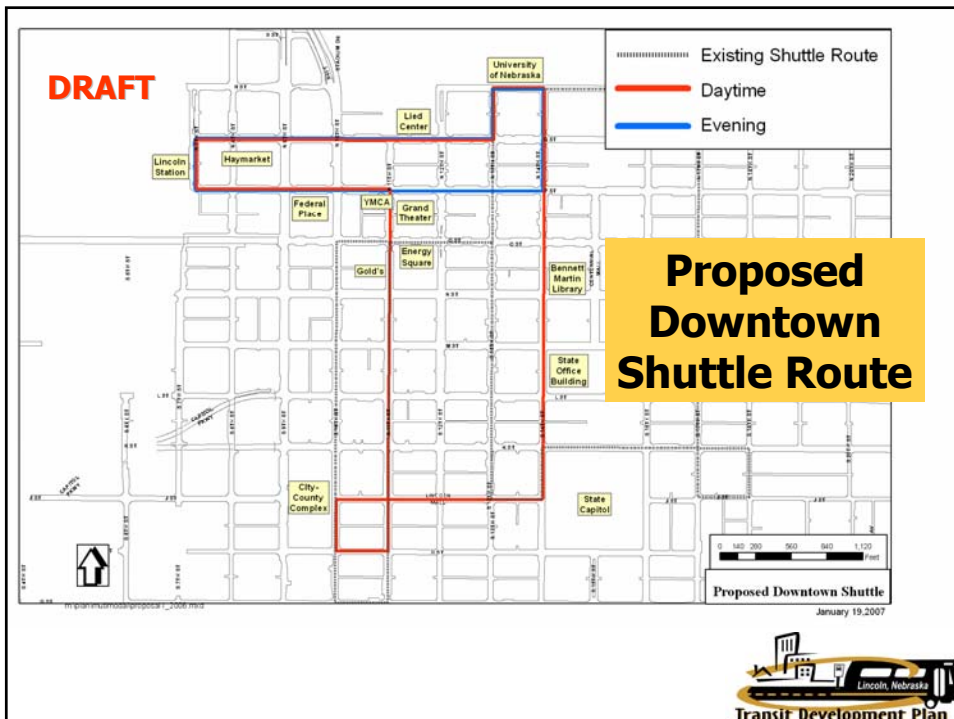
DRAFT Saturday Fixed-Route Service Proposal

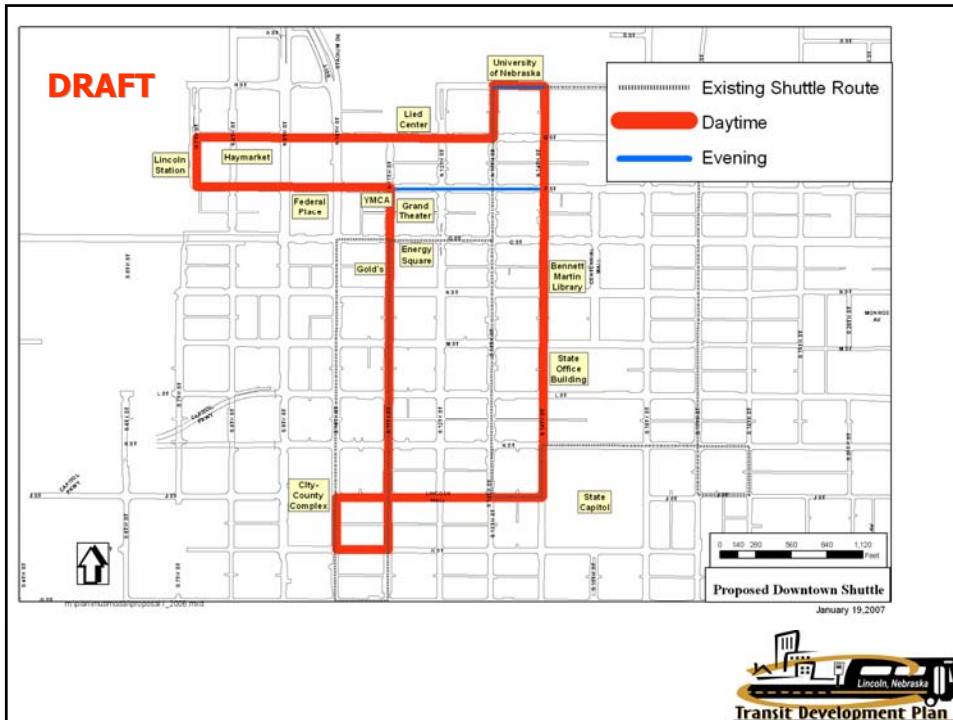
- Downtown interlining of routes
- Concentrate service on major streets
- Replicates weekday routes with some exceptions
- 60 minute service on most routes
- 12 hour service day
- No neighborhood routes



Shuttle Concept Supports Downtown Master Plan

- P Street as primary retail
- Frequent service
- Connects major destinations
- Lays groundwork for possible future streetcar route
- Vision 2015 Concepts

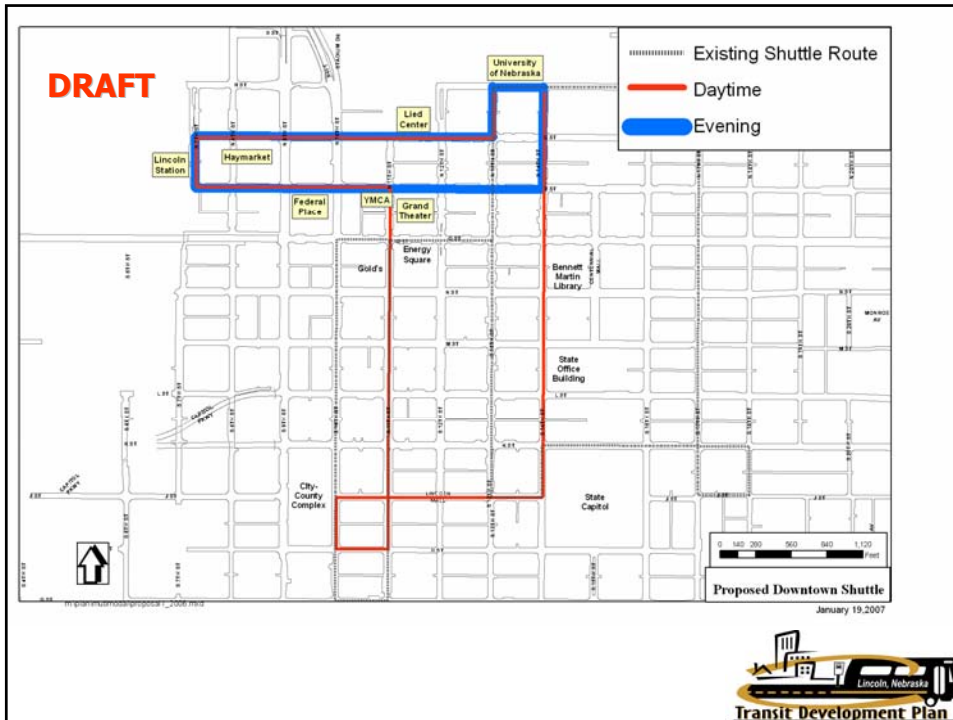




Proposed Draft Daytime Downtown Shuttle Route

- 12 hour service day (6 AM to 6 PM)
- Serves weekday Downtown daytime businesses and workers
- 10 hours with 1 bus and 20 minute headways
- 2 hours with 2 buses and 10 minute headways at lunchtime





Proposed Draft Nighttime Downtown Shuttle Route

- 6 hour nighttime service (6 PM to 12 midnight)
- Serves evening entertainment and retail corridor
- 2 buses with 8 minute headways
- Operates Thursday, Friday, and Saturday



The Shuttle Serves Downtown!

- No fares!
- Unique “branded” buses
- UNL Served
- Haymarket Served
- Tighter route for evening service
- Commitment to Downtown Lincoln



Parking Impacts of Fixed-Route Changes and Shuttle Changes

- Net **increase** of on-street Downtown parking
- 13th Street parking increases
- “O” Street parking increases
- Gold’s Building Impacts
- State Office Building Impacts



Future Expanded Service Possibilities

- Contingent upon securing additional funding
 - Increased service on key routes
 - Evening service
 - Additional neighborhood service
 - New service types
 - New generators and service areas
 - Sunday service
 - Rural service



Capital Improvement Possibilities

- Contingent upon funding
 - Bus stop improvements
 - Vehicle replacement
 - Bike racks on buses
 - New Downtown transfer facility
 - Transfer facilities
 - Park-and-Ride
 - Real-time bus tracking/AVL technology
 - Future trolley service
 - Bio-diesel fuel program
 - Security enhancements



Transit Development Plan Service Proposal



Thank You!

