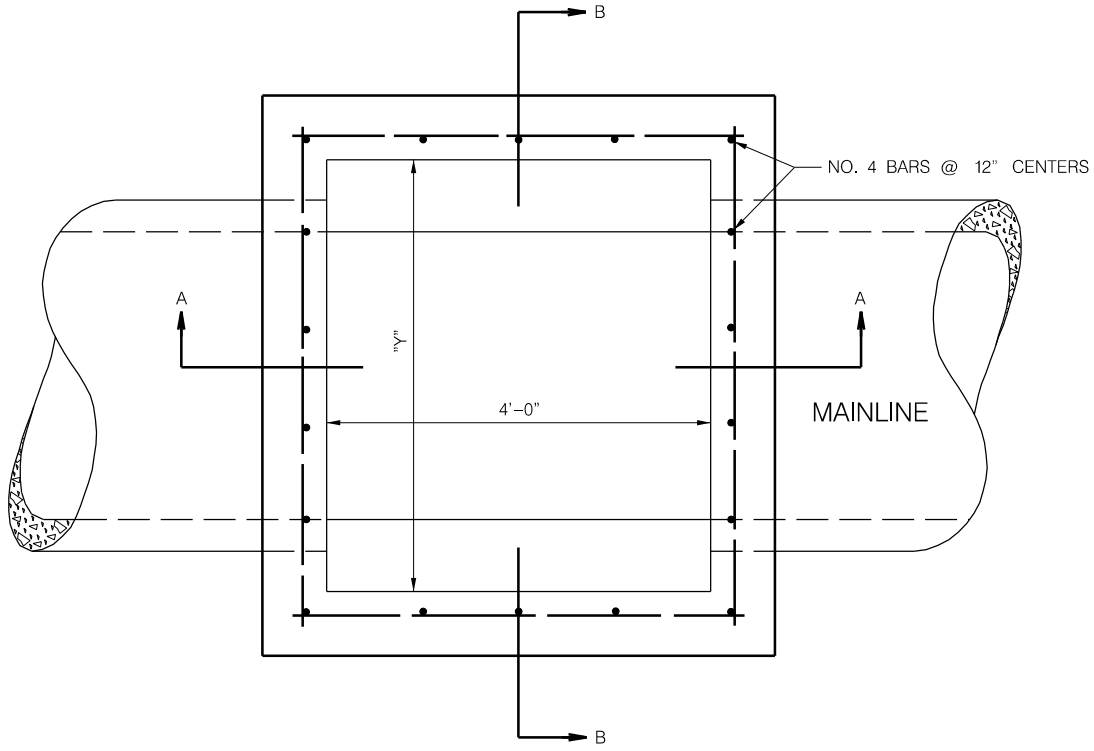
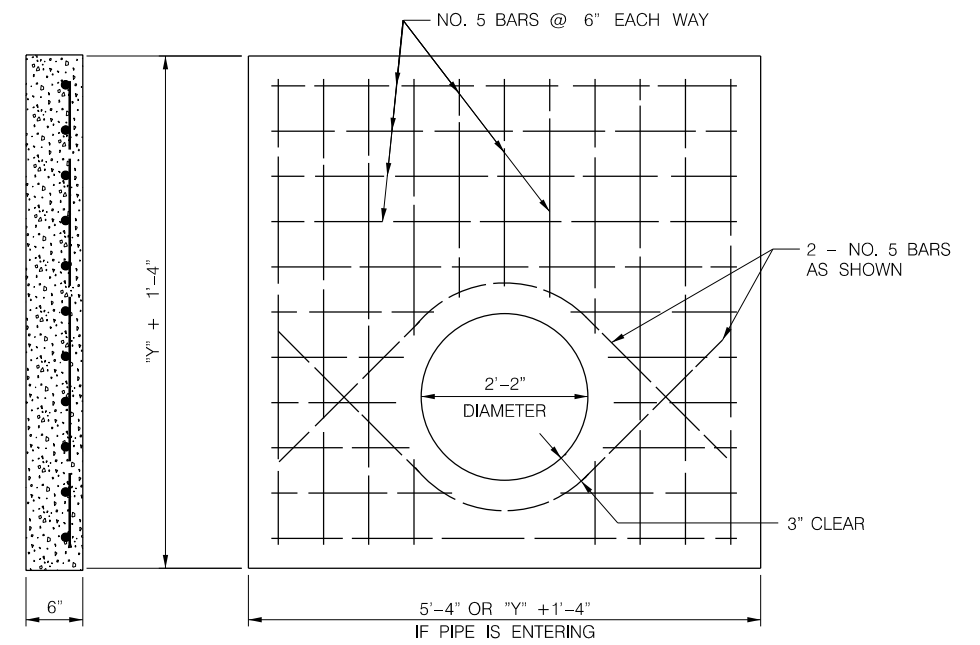


PROJ: LPS_Standards.dwg
 PEN: \\nables\pen\BW_PENTABLE.tbl
 USER: slocaw
 DATE: 2/17/2017
 DGN: ..\STANDARD\2017\LSPs\lsp141.dgn



PIPE DIAMETER	PIPE WALL THICKNESS-"T"	"X" (MINIMUM)	"Y"
15"-30" INC.	3 1/2"	VARIABLES	4'-6"
36"	4"	3'-9"	5'-0"
42"	4 1/2"	4'-0"	5'-6"
48"	5"	4'-5"	6'-0"
54"	5 1/2"	5'-0"	6'-6"
60"	6"	5'-6"	7'-0"
66"	6 1/2"	6'-1"	7'-8"
72"	7"	6'-7"	8'-3"
78"	7 1/2"	7'-2"	8'-9"

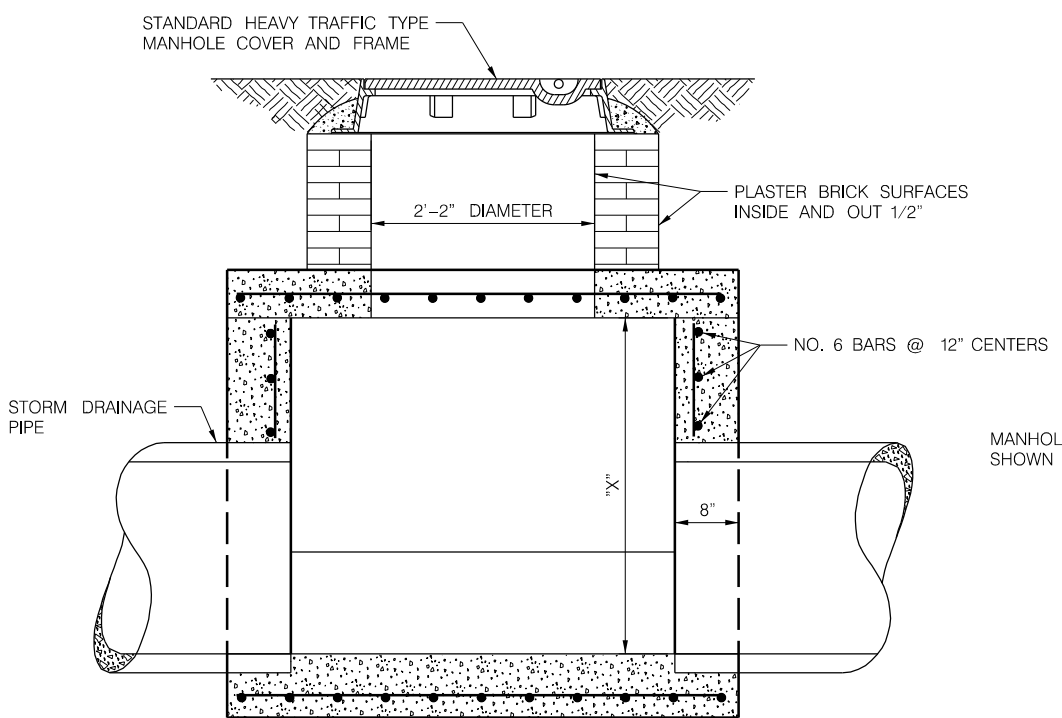
STANDARD PROCEDURES:
 FOR MANHOLES IN PAVEMENT, PLACE STEPS IN WALL FARTHEST FROM GUTTER. FOR MANHOLES BEHIND CURBS, PLACE STEPS FARTHEST FROM BACK OF CURB.
 "Y" IS BASED ON THE LARGEST PIPE IN OR OUT



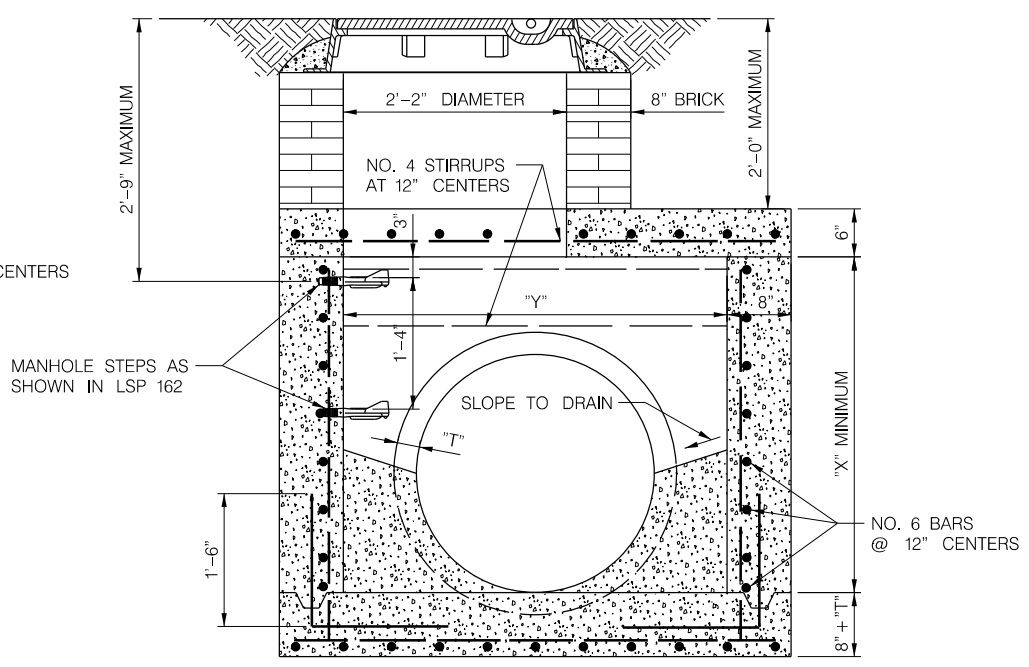
PRECAST MANHOLE TOP

STORM DRAINAGE MANHOLE TYPE M-1

GENERAL NOTES:
 ALL REINFORCING STEEL SHALL BE DEFORMED BARS CONFORMING TO ASTM SERIAL DESIGNATION A-305-507 AND SHALL SATISFY THE BEND TEST REQUIREMENTS FOR STRUCTURAL GRADE STEEL IN ACCORDANCE WITH THE REQUIREMENTS.
 ALL CONCRETE SHALL BE L3500.
 MINIMUM DEPTH OF EMBEDMENT FOR REINFORCING STEEL SHALL BE 2" UNLESS OTHERWISE INDICATED.
 THE CAST IRON MANHOLE RING AND COVER SHALL BE SET IN A BED OF MORTAR, AND CAREFULLY ADJUSTED TO PROPOSED GRADE.
 MANHOLE RING AND COVER SHALL BE CITY OF LINCOLN HEAVY TRAFFIC TYPE. (SEE L.S.P. 162)
 MANHOLE STEPS SHALL BE CITY OF LINCOLN STANDARD MANHOLE STEPS. (SEE L.S.P. 162)
 ALL REINFORCING STEEL SHALL BE EPOXY COATED.

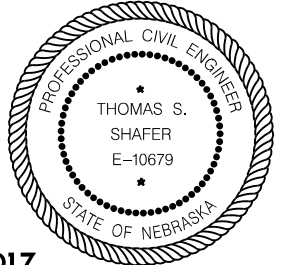


SECTION A-A



SECTION B-B

STORM DRAINAGE MANHOLE TYPE M-1



EFFECTIVE DATE MARCH 22, 2017
STORM DRAINAGE MANHOLES, TYPE 'M-1'

This document was originally issued and sealed by Thomas S. Shafer, E-10679, on 2-17-2017. This media should not be considered a certified document.