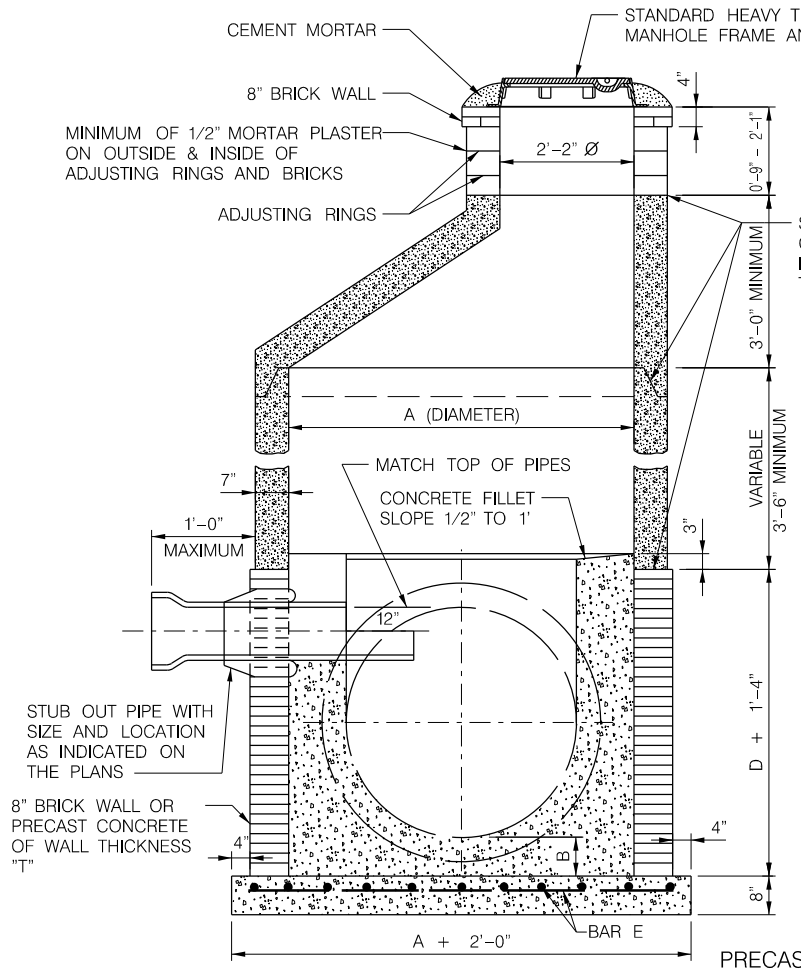
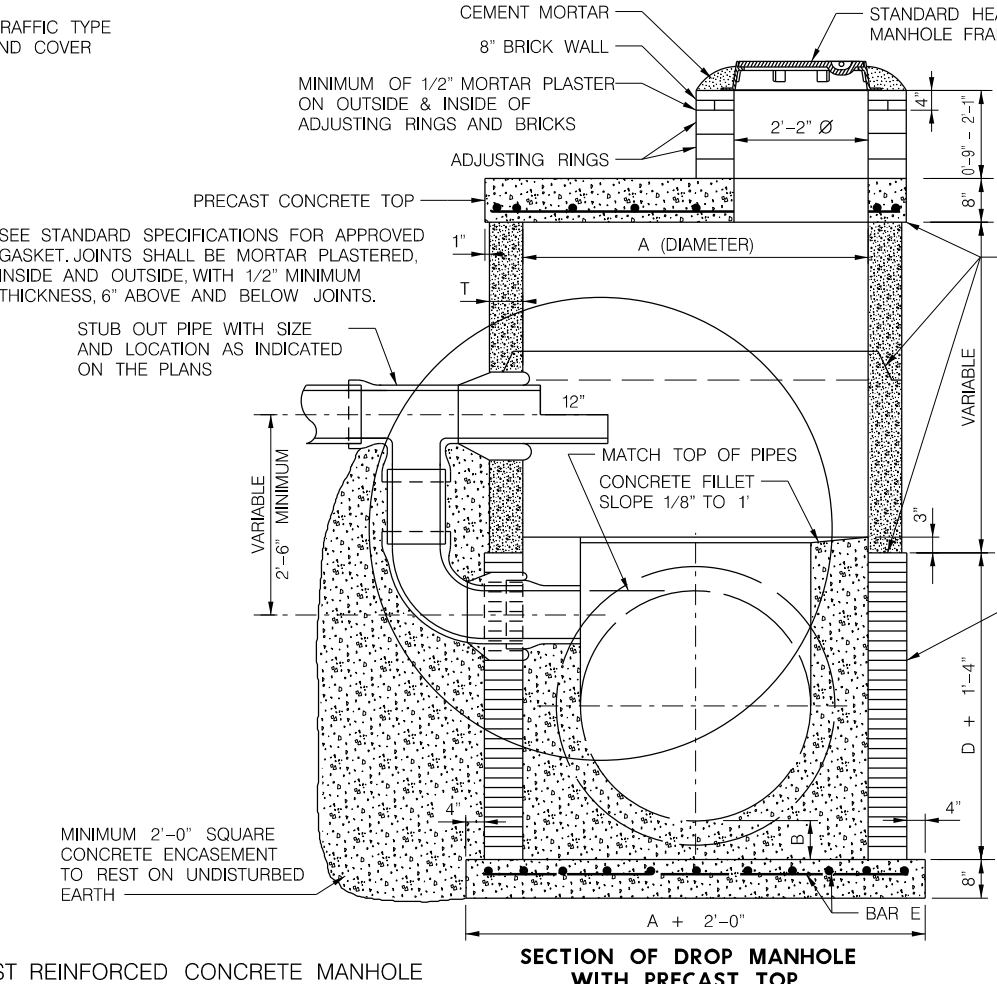


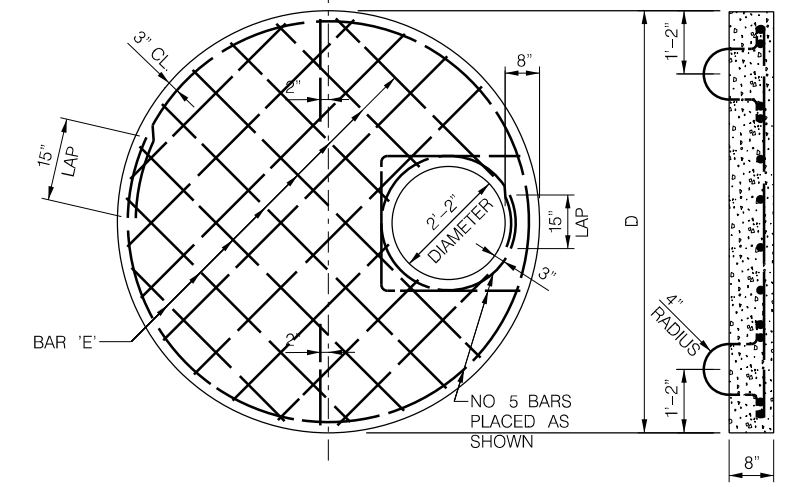
PROJ: LPS_Standards.dwg
 PEN: \\ables\pen\BW_PENTABLE.tbl
 USER: slocaw
 DATE: 2/17/2017
 DGN: ...STANDARD 2017.LSPs\lsp201.dgn



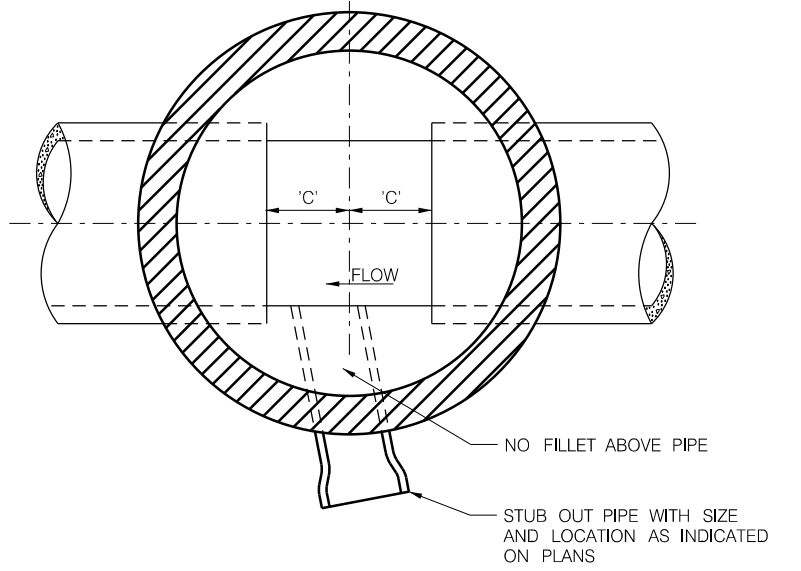
SECTION OF LINE MANHOLE WITH CONCENTRIC TOP



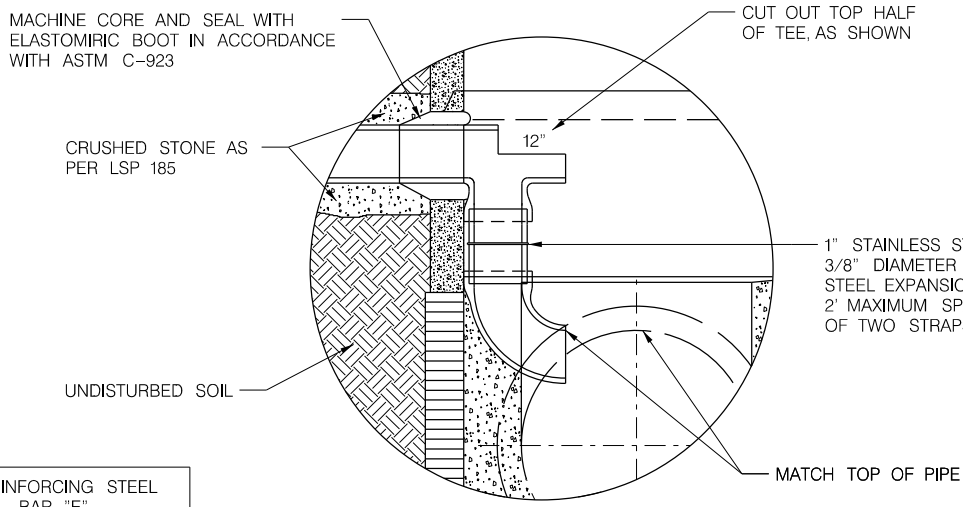
SECTION OF DROP MANHOLE WITH PRECAST TOP



PRECAST MANHOLE TOP



MANHOLE INVERT



INSIDE DROP

GENERAL NOTES:

THE CAST IRON MANHOLE RING SHALL SET IN A BED OF MORTAR, AND CAREFULLY ADJUSTED TO PROPOSED GRADE.

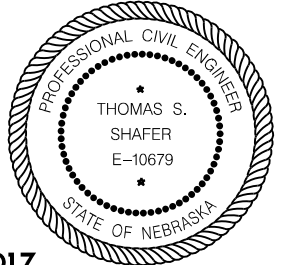
MANHOLE RING AND COVER SHALL BE CITY OF LINCOLN HEAVY TRAFFIC TYPE (SEE L.S.P. 162)

CONCRETE IN MANHOLE SHALL BE L-3500, VIBRATED IN PLACE.

ALL REINFORCING STEEL SHALL BE EPOXY COATED.

MAXIMUM DROP PIPE SIZE IS 15" DIAMETER, FOR 18" DIAMETER AND LARGER, CONSTRUCT LINE MANHOLE AND MATCH TOP OF PIPES

STANDARD SANITARY SEWER MANHOLE	SANITARY TRUNK SEWER DIAMETER	DIMENSIONS					REINFORCING STEEL BAR "E"
		A	B	C	D	T	
TYPE "P" (LINE)	15" THRU 27" INCL.	5'-0"	0'-6"	1'-6"	6'-2"	6"	NO 5 BARS @ 12" EACH WAY
TYPE "G" (LINE)	30" THRU 48" INCL.	6'-0"	0'-8"	1'-9"	7'-4"	7"	NO 5 BARS @ 9" EACH WAY
TYPE "Q" (DROP)	15" THRU 27" INCL.	5'-0"	0'-6"	1'-6"	6'-2"	6"	NO 5 BARS @ 12" EACH WAY
TYPE "H" (DROP)	30" THRU 48" INCL.	6'-0"	0'-8"	1'-9"	7'-4"	7"	NO 5 BARS @ 9" EACH WAY



EFFECTIVE DATE MARCH 22, 2017

WASTEWATER MANHOLES, TYPE 'G', 'H', 'P' AND 'Q'

This document was originally issued and sealed by Thomas S. Shafer, E-10679, on 2-17-2017. This media should not be considered a certified document.