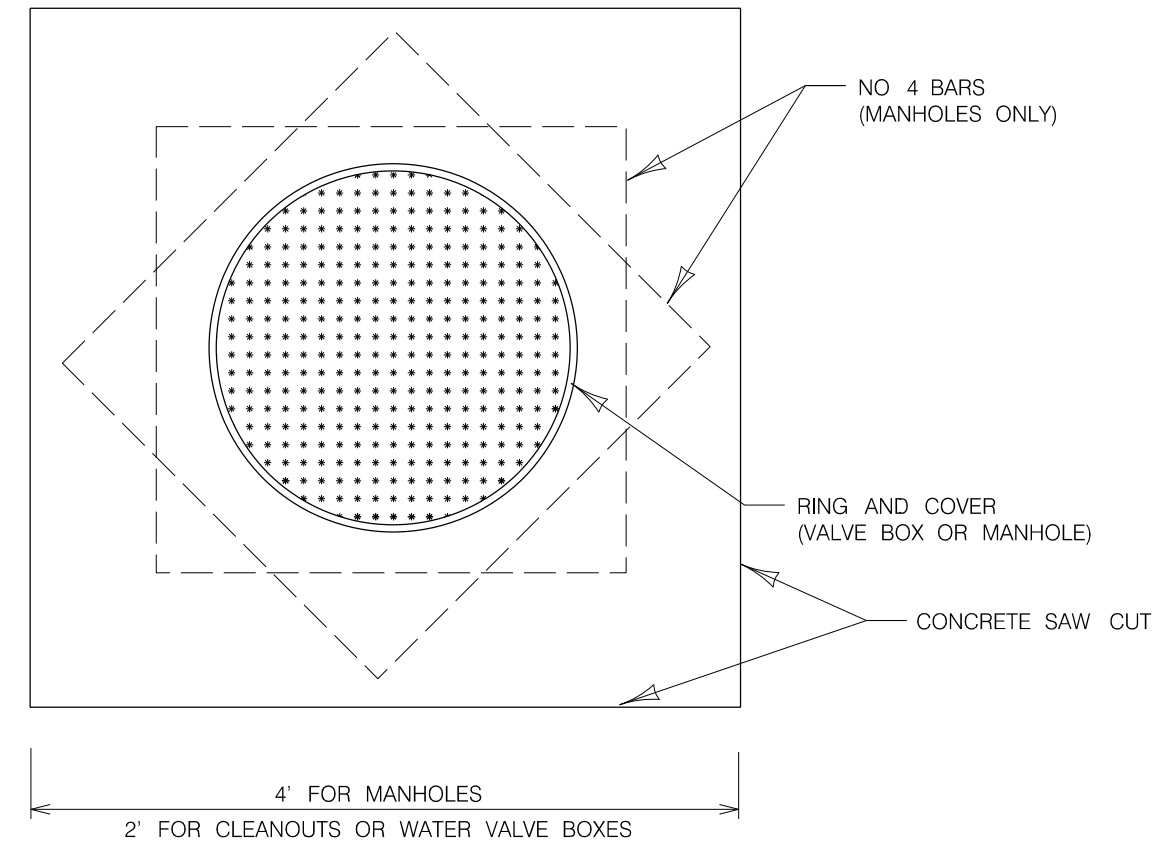


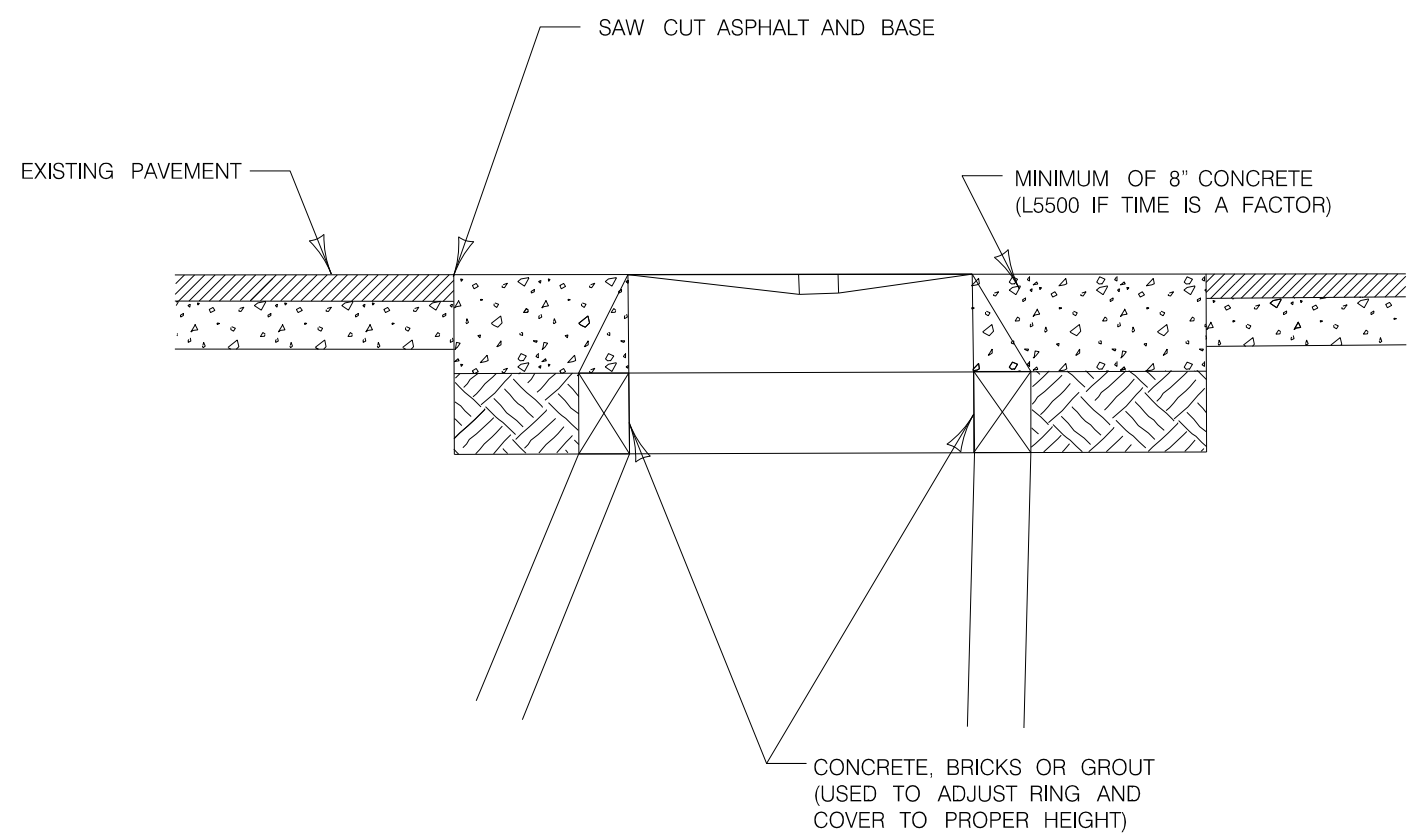
PROJ: LPS_Standards.dwg
 PEN: ..\tables\pen\BW_PENTABLE.tbl
 USER: slocaw
 DATE: 2/16/2017
 DGN: ..\STANDARD\2017\LSPs\lsp61.dgn

LINCOLN PUBLIC WORKS AND UTILITIES	PROJECT NO.	SHEET NO.
	LSP 61	1
	Date: 2/17/2017	Drawn: CAW
	Horz. Scale: N.T.S.	Checked: Approved:

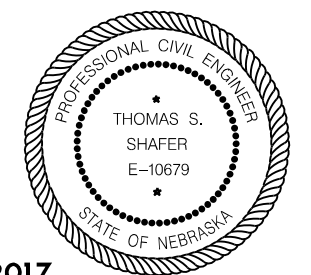
DIRECTION OF TRAVEL



PLAN



SIDE VIEW



EFFECTIVE DATE MARCH 22, 2017

UTILITY ADJUSTMENT IN EXISTING PAVEMENT

This document was originally issued and sealed by Thomas S. Shafer, E-10679, on 2-17-2017. This media should not be considered a certified document.