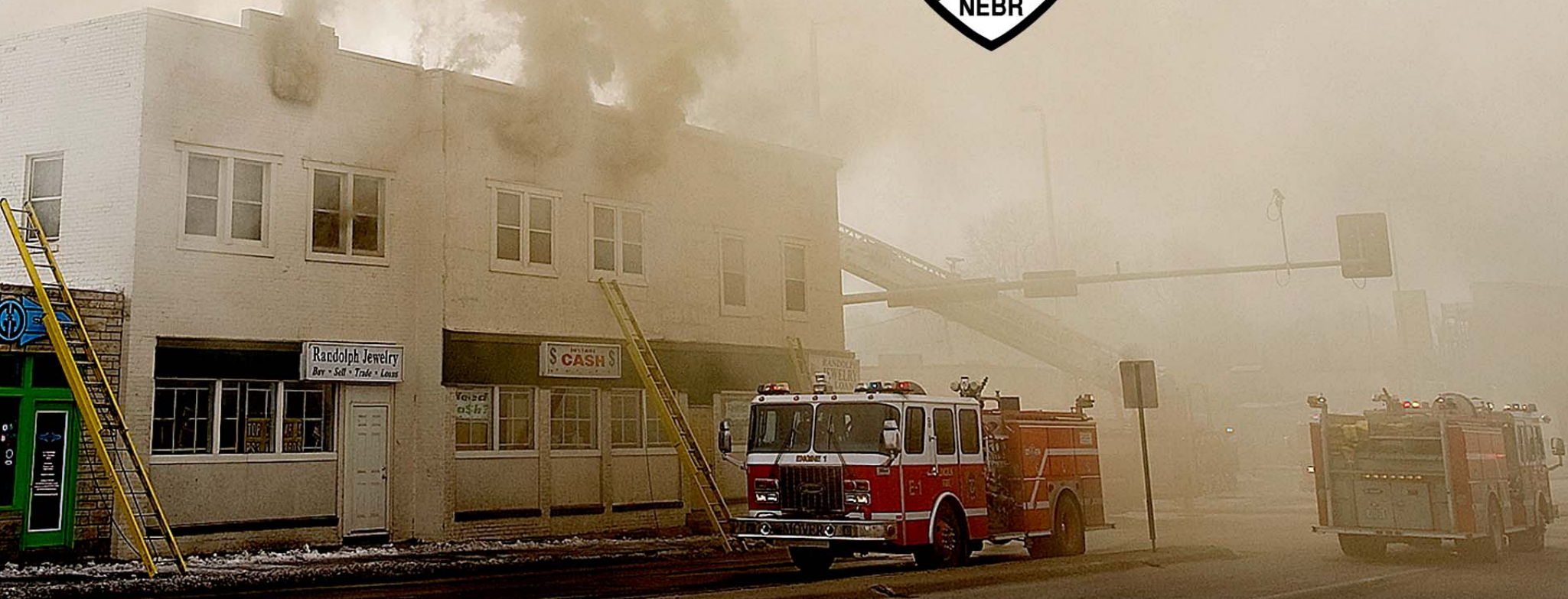


# 2013 ANNUAL REPORT





**Our Mission**  
*The desire to serve...*  
*The ability to perform...*  
*The courage to act...*

## **Table of Contents**

Message from the Mayor -	1
Message from the Fire Chief -	2
Organizational Chart -	4
Department Values -	5
Accreditation -	6
LF&R Response Time Performance -	7
Emergency Medical Services -	9
Research & Development -	10
Records/Recruitment -	11
Information/Technology -	11
Special Operations -	12
Safety -	14
Human Resources -	30
Logistics Division -	34
Urban Search & Rescue, NE-TF1 -	37

Dear Citizens of Lincoln,

The dedicated professionals of Lincoln Fire & Rescue (LF&R) work every day to protect the residents of Lincoln. This annual report provides an overview of their lifesaving efforts.

In 2013, the men and women of LF&R responded to 1,983 fire alarms and successfully extinguished 502 working incident fires. They also responded to 16,720 calls for emergency medical service.

In addition to these emergencies, LF&R is home to Nebraska Task Force 1, a highly trained Urban Search & Rescue team that responds to national disasters. Lincoln firefighters have helped fellow Americans this year in the wake of the devastating tornado's in Moore Oklahoma, and the flooding and structural collapse that occurred in the Rocky Mountain foothills in Colorado.

LF&R helps protect our resident's health and our community's environment by responding to hazard material incidents for mitigation and incident stabilization. The department also provides fire prevention and safety education to people of all ages.

As you review the accomplishments of our firefighters and paramedics, I am sure you will share my pride in the outstanding service they provide to our community.

Sincerely,

Chris Beutler  
Mayor of Lincoln



*Chris Beutler  
Mayor of Lincoln*



On behalf of the members of Lincoln Fire & Rescue it is my honor to humbly present for review the 2013 Annual Report.

2013 has been another productive year in providing all risk/all hazard response to this great community. We were able to continue providing a high level of service while facilitating targeted goals. Listed below are a few of those accomplishments:



*John C. Huff  
Fire Chief*

- We updated the LF&R community driven strategic plan utilizing both internal and external stakeholders. This process included the review and development of updated organizational goals and objectives as well as our core values.
- Improvements in Prehospital emergency medical care include a new alternative method for pre-hospital CPR, called Cardio-Cerebral Resuscitation (CCR); Instituted medically induced hypothermia for cardiac patients.
- Provided video laryngoscopy for paramedics performing endotracheal intubation to improve the ease with which this care is provided.
- We completed the Annual Compliance Report and update the Standard of Coverage to maintain department accreditation certification.
- We conducted an annual exercise, "LF&R unplugged" to evaluate our organizational performance in the event of a technology/communications failure.
- Working with the city 911 center staff, we reviewed all computer aided dispatch code types to reduce the number of apparatus responding code 3 (lights and siren responses), in our ongoing efforts to increase citizen and firefighter safety.
- We conducted several joint training sessions with the police department for active shooter incidents, drivers training, CPR and more.
- LF&R continued the trial period for ARV (Alternate Response Vehicle) to reduce fuel consumption and save costs for vehicle operations.

- We developed and instituted a new policy for the response to high-rise structures that meets fire service industry standards and delivered comprehensive training department wide to assure that we provide excellent service, with the safety of citizens and firefighters always of the highest importance.

- In cooperation with the city public works, and police departments, we were able to create an Automatic Vehicle Location System, with the University of Nebraska expertise, that will allow real time vehicle location tracking.

- We upgraded all LF&R vehicle mounted mobile data computers to 4G technology to improve data transfer speed and reliability.

- In conjunction with the federally funded web based state-of-the-art web fire station telecommunications project and the city wide Voice over IP (VOIP) project we completed installation of fiber optic connectivity to all fire stations that were not already on the city system.

- We received a grant from a private foundation to purchase iPads for command staff, training staff, and others to explore the benefits of these devices within our internal support functions.

- At the direction of the Mayor, we conducted a comprehensive review and update of all LF&R relevant Lincoln Municipal Codes with recommendations to the City Attorney.

- We completed the revalidation of the entry level firefighter physical ability test, as required every 8-10 years.

- The LF&R national disaster team Nebraska Task Force 1, a highly trained Urban Search & Rescue team was called to duty on two occasions. During these incidents, Lincoln firefighters have helped fellow Americans this year in the wake of the devastating tornadoes in Moore Oklahoma, and the flooding and structural collapse that occurred in the Rocky Mountain Foothills in Colorado.

Although Lincoln Fire & Rescue is still leaning progressively forward in our commitment to service in this community, we are still facing several challenges. Some of these challenges are found in the financial hurdles that most organizations find themselves in today as well as striving to provide consistent service to a larger population and larger geographical area.

While these challenges are the reality of our contemporary circumstances, I can speak heartily and enthusiastically on behalf of all the members of Lincoln Fire & Rescue; "It is a privilege and pleasure to be of service to this community."



# Organizational Chart

Lincoln Fire & Rescue  
LINCOLN, NEBRASKA  
01/28/14

**PUBLIC SAFETY DIRECTOR**  
Tom Casady

**FIRE CHIEF**  
John Huff

**FINANCE/OPERATIONS ASSISTANT CHIEF**  
Pat Borer

**EXECUTIVE SECRETARY**  
Sandy Yost

**ACCOUNTANT**  
Ngoc Dao

**STAFFING/  
SCHEDULING  
STATION II**

**FIRE  
RESPONSE  
OPERATIONS**

Budget  
Development/  
Oversight

NFPA  
Compliance

LPD  
Liaison

Grant Applications  
& Administration

OIC  
SHARED  
DUTY

**OFFICE  
ASSISTANT**  
Angie Williams

INCIDENT  
COMMAND  
TECHNICIAN

EMERGENCY  
SERVICES  
RESPONSE

**HUMAN  
RESOURCES**  
BC Jeanne  
Pashalek

**SPECIALTY  
RESPONSE  
OPERATIONS**  
BC Brad  
Thavenet

**RESEARCH &  
DEVELOPMENT**  
BC Tim  
Linke

**EMS**  
DC Roger  
Bonin

**RECORDS/  
RECRUIT  
TRAINING**  
BC Leo Benes

**INFORMATION  
TECHNOLOGY/  
GIS**  
BC Eric Jones

**SAFETY  
EDUCATION**  
BC Derald  
Murrell

**LOGISTICS  
SUPPORT**  
DC Kendall  
Warnock

E3, M3, E6, M6, E13

Floater

Hiring &  
Selection

PIO, Media  
Relations,  
Marketing

Interns &  
TMWA

Recruitment

Performance  
Appraisals

Diversity Training/  
Diversity Con't  
Education

City Risk  
Management  
Liaison

City Equity &  
Diversity Liaison

NETF1 PROGRAM  
COORDINATOR  
Danny Wright

US&R SPECIALIST  
Keith Houfek

LOGISTICIAN  
Mark Darrington

ACCOUNT  
CLERK III  
Stacy Schneider

E2, M2, E9, E14

TRAINER  
Grant Collings

Hazardous Materials  
Response

Confined Space  
Rescue

High & Low Angle  
Rescue

Water  
Rescue

Vehicle  
Extrication

Health Dept  
Liaison

T1, E1, E10

RESEARCH &  
DEVELOPMENT

Leadership  
Development

Incentive  
Development/  
Higher Education

Awards  
Committee

Legislative  
Review

Firefighter  
Skills Training

TRAINER  
Jamie Pospisil

Mutual Aid  
Liaison

Red Cross  
Liaison

OFFICE  
SPECIALIST  
Kim McKay

EMS TRAINER  
Daryl Hartley

EMS  
Supervisors  
Pete Eppens  
Aaron Pospisil  
Scott Wiebe

EMS BUSINESS  
MANAGER  
Sherrie Meints

ACCOUNT  
CLERK III  
Teresa Guenther

PARA  
PROFESSIONAL  
Karen Stork

Medic Intern  
Program

EMS Oversight  
Coordination

EMS Billing &  
Collections

E7, M7, T7, E4

NEW  
FIREFIGHTER  
TRAINING  
COORDINATION

Hardware  
Support

Software  
Support

PRIME Records  
System

Fire Recruit  
Training

Records

City IS  
Liaison

E8, M8, T8

PROGRAMMER  
Glen Louch

GIS

OFFICE  
OPERATIONS  
SPECIALIST  
Julie McGahan

Re-Accreditation

Mobile Data  
Computers

LFRMIS  
System

Web Site  
Information Systems

Graphical  
Information  
System

Liaison to 911

E5, M5, T5, E12

Firefighter  
Safety & Wellness

Physical  
Fitness

Community/Public  
Education

Business  
Inspection  
Program

Business  
Preplanning

Respiratory  
Program  
Administrator

Outside Agency  
Liaison

City Public Works  
Liaison

FIRE  
EQUIPMENT  
MECHANICS  
Robbie Koranda  
Bob Poe

OFFICE  
SPECIALIST  
Stacey Bergis

SUPPLY  
CLERK  
Kelly Carter

Vehicle / Equipment  
Repair

Vehicle  
Specification App

Facility  
Maintenance / Repair  
Coordination

Facility Planning  
& Design

SCBA Repair /  
Maint / Testing

Air Tech  
Ron Wolf

Chaplains  
Liaison

Key

FUNCTIONAL  
AREAS

LIAISON



We value honesty in our approach to one another and the community and will demonstrate integrity in the performance of our duties.

We value commitment towards always doing what is in the best interest of our citizens and dedicating ourselves to providing the highest level of customer service possible.

We value teamwork in our approach towards remaining safe and restoring balance in the lives of others; thereby presenting ourselves as industry professionals.

Through empathy and compassion we will serve all people equally and without prejudice making every responsible attempt towards reaching their level of expectation.



# Accreditation

Lincoln Fire & Rescue is an accredited public safety organization through the Center for Public Safety Excellence (CPSE). CPSE's accreditation program, administered by the Commission on Fire Accreditation International (CFAI) allows fire and emergency service agencies to compare their performance to industry best practices in order to:

- Determine community risk and safety needs and develop community specific Standards of Cover.
- Evaluate the performance of the department.
- Establish a method for achieving continuous organizational improvement.

The CFAI model includes these performance evaluation categories:

- Assessment and Planning
- Essential Resources
- External Systems Relations
- Financial Resources
- Goals and Objectives
- Governance and Administration
- Human Resources
- Physical Resources
- Programs
- Training and Competency

In 2013 per CPSE requirements, Lincoln Fire & Rescue submitted the required Annual Compliance Report delineating continued compliance with the core competencies as defined by CPSE. In addition, LF&R was able to show that programs and processes identified during the site assessment have been accepted and implemented.



Currently, Lincoln Fire & Rescue remains focused on maintaining the department accreditation status. The department recognizes the fact that being an accredited agency is a process that is ongoing, thus, the department is already preparing for the next required site visit which is scheduled to occur in the spring of 2014. The process enables the department to identify strengths and weaknesses and encourages ongoing review of the delivery of services to the community. Lincoln Fire & Rescue utilizes the process to assist in the development of planning for acute and long term organizational improvement and ultimately the delivery of the best service attainable to its customers, the citizens of Lincoln.

Lincoln Fire & Rescue remains one of approximately 160 accredited fire departments world-wide. This is a tremendous accomplishment for the organization and a compliment to the community it serves.



# LF&R Response Time Performance

As an Internationally Accredited Agency, Lincoln Fire & Rescue (LF&R) has adopted the Commission on Fire Accreditation International's (CFAI) response time measurement methodology. LF&R utilizes "fractile" reporting to analyze all response performance indicators. Fractile response analysis measures each element of the response cascade against established benchmarks.

A benchmark is a standard from which something can be judged. Benchmark standards are industry "best practices" that LF&R strives to meet. LF&R's response time benchmarks are based on National Fire Protection Association Standards.

A baseline is a database from which something can be judged. Baseline response time information represents current and historical response time performance. According to CFAI Accreditation principles, an agencies baseline response time performance should be no less than 70% of the established benchmark. LF&R Medic Unit response time standards are defined by Lincoln Municipal Code 7.08.050.

LF&R's assessment of response time measurement encompasses three distinct time intervals. The response time intervals are call processing time, crew turnout time, and vehicle travel time. Each time interval is analyzed individually and then combined to create a "Total Response Time Measurement." By analyzing each element of the response time cascade individually and then combining the elements to establish a total response time measurement, LF&R can easily identify problematic response time components.

## Call Processing Time

"Call Processing" time starts when a 911 call is answered and ends when the engine company, truck company, or medic unit is dispatched to the incident.

## Turnout Time

"Turnout Time" starts when firefighters are alerted in the stations and ends when the firefighters board the engine company, truck company, or medic unit and are en route to the incident. During this time frame, a firefighter must acknowledge the call, dress in appropriate protective gear, board the apparatus and fasten their seat belt for departure.

## Travel Time

"Travel Time" starts when the engine company, truck company, or medic unit is en route to the incident and ends when the respective vehicle arrives at the scene.

Call Processing Time  
+ Turnout Time  
+ Travel Time  
= Total Response

Response Time Performance (Continued from page 7)

Baseline Performance (FIRE) 90th Percentile		LF&R <i>Benchmark</i> Goal	2013	5 Year
Alarm Handling	Pick-up Dispatch (seconds)	:60	:60	:61
Turnout	Turnout Time First Engine/Truck	1:20	1:29	1:33
Travel	Travel Time First Engine/Truck	4:00	4:27	4:27
	Travel Time Effective Response Force 3-Engines 2-Trucks	8:00	9:07	9:57
Total Response Time	Total Response Time First Engine/Truck	6:20	7:22	7:19
	Total Response Time Effective Response Force 3-Engines 2-Trucks	10:20	12:03	12:33

\* Data reflective of those calls which meet the classification of a confirmed structure fire.

# FIRE

Baseline Performance (EMS) 90th Percentile		LF&R <i>Benchmark</i> Goal	2013	5 Year
Alarm Handling	Pick-up Dispatch (seconds)	:60	:60	:61
Turnout	Turnout Time First Engine/Truck	1:20	1:29	1:33
Turnout	Turnout Time Ambulance	1:20	1:29	1:33
Travel	Travel Time First Engine/Truck	4:00	4:27	4:27
	Travel Time Ambulance	8:00	9:07	9:57
Total Response Time	Total Response Time First Engine/Truck	6:20	7:22	7:19
	Dispatch to Arrival Ambulance <small>Lincoln Municipal Ordinance 7.08.050</small>	10:20	12:03	12:33

\* Data reflective of medical incidents which meet the classification of life threatening.

# EMS

## Emergency Medical Services

LF&R is a fire-based 911 ALS EMS service that responded to 16,720 emergency incidents in calendar year 2013

LF&R transported 13,367 patients to our four local hospitals; St. Elizabeth's Regional Medical Center (SERMC), Bryan Health East and West Campuses, and Nebraska Heart Hospital.

LF&R has over 70 nationally registered paramedics on staff. We serve 24 hours a day with six front line medic units and five ready reserve medic units that can be placed into service when system demand requires.

Medical direction for LF&R is provided by board certified emergency room physician Dr. Jason A. Kruger. Dr. Kruger works for the Lincoln Emergency Medical Oversight Agency (EMSOA) board that provides medical oversight to LF&R.

During 2013 LF&R EMS has had many successes including identifying patients suffering from ST elevation MI's (STEMI) by quickly performing 12 lead EKG's on patients having chest pain and transmitting those 12 lead EKGs

from our defibulator to the local emergency rooms. All of the field identified "cardiac alert" patients transported to Bryan Health were taken to the cardiac catheterization lab where the deployment of first device occurred in less than 70 minutes after the arrival of LF&R at patients side! The national average is 90 minutes from the arrival **at hospital** to deployment of first device. This program is in its sixth year and becomes more successful each year.

LF&R continues to work with the Lincoln Lancaster County Stoke Partnership Committee and the hospitals to improve care of patients suffering from strokes. LF&R aggressively attempts to identify patients suffering from a stroke and will call a "stroke alert" from the field. This provides the hospital with pre-notification of the pending arrival of a patient suffering from a stroke and allows them time to assemble the personnel needed to treat the patient within a narrow time frame.

During 2013 with guidance from Dr. Kruger, LF&R was accepted into the Cardiac Arrest Research to



Enhance Survivability (CARES) Registry. LF&R is the **first** EMS agency in the State of Nebraska to be accepted into CARES. CARES measures the departments CPR performance with the goal of improving survivability of sudden cardiac arrest.

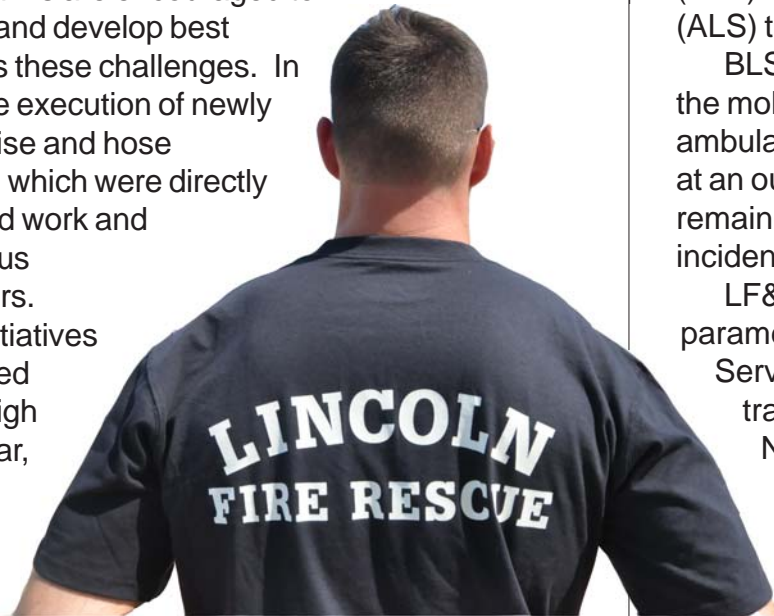
LF&R began cardio-cerebral resuscitation (CCR) during the last quarter of 2013. This aggressive form of CPR has proven to enhance



## Research & Development

Awareness of nationwide trends in the delivery of fire and emergency services is necessary in the pursuit of efficient and safe emergency response. Ongoing exploration of data and methods provided by national standards organizations such as the National Fire Protection Association and the National Institute of Standards and Technology will continue to drive decisions related to fire suppression delivery. Furthermore, LF&R strives to identify departments and organizations across the United States who have developed initiatives that enhance the level of service provided. We continue to identify these approaches and develop avenues to improve our own response capabilities.

The Lincoln Fire and Rescue Research and Development function is responsible for determining gaps in training, equipment, and operations. A major component in determining these gaps is the end-user. Department members from all ranks are encouraged to identify challenges and develop best practices to address these challenges. In 2013, LF&R saw the execution of newly implemented high rise and hose deployment training which were directly attributed to the hard work and research of numerous department members. Additionally, new initiatives related to pressurized fire extinguishers, high visibility uniform wear, and response to active shooter incidents were undertaken.



### *Emergency Medical Services (Continued from Page 9)*

patient's chances of survivability by increasing the number of patients who have a spontaneous return of circulation.

We have implemented several new ALS protocols during 2013 including intranasal administration of certain medications, therapeutic hypothermia and a new termination of futile resuscitation protocol in conjunction with our new CCR protocol.

Dr. Kruger continues to ride with the EMS supervisors each month and provides input on emergency medical scenes during this time. He is readily available to meet with and discuss issues with the staff to help make the system better.

LF&R received a grant during 2013 from the Metropolitan Medical Response System (MMRS) to purchase two ambulance cot Power-LOAD systems. These devices have been mounted in ambulances and allow for the loading of patients with minimal lifting by providers. The devices have been enthusiastically received by the field providers using them.

The LF&R Training Division provides Basic Life Support (BLS) training to all field employees and Advanced Life Support (ALS) training to paramedics.

BLS training during 2013 was conducted at the stations with the mobile EMS Training Unit. This de-commissioned ambulance is used to deliver training in a controlled environment at an outside location. This delivery method allows apparatus to remain in quarters and respond to "delta" and "echo" medical incidents and fire alarms in their first due area.

LF&R delivered over 24 hours of (ALS) training to all paramedics. This training was delivered at the City's Municipal Service Center (MSC) in LF&R's indoor training center. The training was geared to cover the topics required by the National Registry of EMT's and EMSOA and included instruction on RSI, surgical cricothyrotomy, CPAP, administration of intranasal medications, video laryngoscopy, 12 lead EKG's and other topics relevant to the Lincoln system.

## Records / Recruitment

National interest in the fire service is very high and recruitment for Lincoln Fire & Rescue has gone very well.

On March 27<sup>th</sup>, 2013, Lincoln Fire & Rescue hired a class of eleven firefighter trainees. New firefighters learn at the training center for 14 weeks prior to being assigned to the 24 hour duty shift. The first fourteen weeks were spent learning about public protection classification, ropes, hoses, and other State of Nebraska firefighter 1 material. The recruits were then assigned to fire companies. The firefighter recruits then spend approximately six months assigned to the companies to complete their probation. Successful completion of their training certification skills had them sworn in as firefighters on the second week of January, 2014.

Lincoln Fire & Rescue put in place a web based document management system. To assure all employees had access to current policies and procedures. This was a very large undertaking to migrate management policies and other documents to the new system. The new system has many features to assist with administering policies of the organization/ agency.



## Information / Technology

Lincoln Fire & Rescue recognizes that technology is an excellent tool to enhance firefighter and public safety. In 2013 LF&R continued to seek new technologies to aid in the provision of services.

LF&R continues to expand GIS ability through a continuum of the Automatic Vehicle Location (AVL) program. As we near completion of the joint venture with the University of Nebraska, we will soon be providing access to this service to our field personnel. This will assist them in safely responding to emergency calls for service while allowing managers the ability to ensure that we are providing the most efficient services possible.

FireView, a dashboard software program is in its final stages of set-up and we will be rolling this service out to our personnel in the spring of 2014. This dashboard enables personnel to determine response time performance at a glance. In addition, the dashboard assists in the identification of hazards and areas

for prevention efforts. This is an excellent tool for organizational leadership as well.

In the stations LF&R continues to expand the use of technology. In 2013, LF&R began a significant upgrade of the wireless technology in the stations. With the deployment of iPads to all training personnel, they will now be able to walk into a station and wirelessly provide training if desired. This system is tiered with the current web based video conferencing system.

LF&R is developing a program called PulsePoint. This software is designed to support public safety agencies working to improve cardiac arrest survival rates through improved bystander performance and active citizenship. Application users with a smart phone can run the app on their device who are willing to assist will be notified if someone nearby is having a cardiac emergency. Also on the app is the location of the nearest AED (Automated External Defibrillator).

# Special Operations

Lincoln Fire & Rescue Special Operations is comprised of a multitude of companies and disciplines that make up the department's technical rescue capabilities. These disciplines include hazardous materials, vehicle extrication, high and low angle rescue, confined space rescue, trench rescue, and water rescue.

Personnel on Truck Companies 1, 5, 7, and 8 are prepared for these types of incidents. Hazardous materials



*Photo courtesy Stephen Shield Photography*

companies are Engines 2, 9, 14, and haz mat 14 with water rescue made up of multiple individuals from various companies stationed throughout the city. A portable decontamination trailer and heavy rescue trailer are also available for deployment as needed. All assigned are cross trained to meet OSHA regulations, NFPA and other standards. Technical rescue equipment was upgraded to meet the ever changing and demanding needs of the technical rescue environment.

2013 was a very challenging year for tactical response. Along with CO (carbon monoxide) calls and small chemical spills, the ever changing environment of building and vehicle construction, alternate fuels and training demands, these companies responded to over 750 calls for technical assistance and trained over 3,750 staff hours.

## Hazardous Material

As society moves towards a "greener" society, alternative fuels have entered the city's fleet of vehicles and public transportation. Compressed Natural Gas or CNG vehicles continue to have a greater presence on the city's roadways with supporting fueling

stations also being installed within the city. As these vehicles, along with other hybrids, travel more miles on the city's streets, the technical rescue and hazardous materials units are continually being educated on chemical properties as well as their technical operation.

Joint training exercises were conducted with BNSF Railroad. 2013 brought about the introduction of a Liquid Natural Gas (LNG) powered locomotive to the BNSF railroad fleet. BNSF offering training to the department on not only the principles and properties of LNG, but also the strategies behind problem mitigation should they ever arise.

Not only does Lincoln Fire & Rescue Special Operations support hazardous material personnel, but also a vast variety of technical disciplines as well.

*(Continued on Page 13)*



*Photo courtesy Stephen Shield Photography*



## Technical Rescue

Lincoln Fire & Rescue continues to support, as needed, Lincoln Electric System's (LES) upgrade of technology in the downtown network upgrade project. This project upgraded various switch gear in below grade confined space vaults stationed throughout the downtown Lincoln area. LF&R's technical rescue teams were also able to rescue a worker from a trench collapse and multiple individuals in low angle rescue situations throughout the year.

Lincoln Fire & Rescue's Water Rescue Team underwent a change to a tactical unit.

This water rescue tactical unit is composed of both on and off duty personnel with notification of off duty personnel should incidents occur. All individuals are trained in a multitude of disciplines: public safety diving, dry suit and full face communication, dive rescue and recovery, floods/moving water, and surface ice rescue are all areas of certification for new team members and recertification for existing members. One area of great anticipation each year for team members is the annual Polar Plunge for Special Olympics. This fund raising event is attended by hundreds of individuals braving the cold

water for a good cause while team members stand-by in a safety role.

Lincoln Fire & Rescue Special Operations continues to have a great working relationship with Lincoln Lancaster County Health Department. Joint training exercises in hazardous materials, environmental health protection and service has become an ongoing endeavor that assists with personnel becoming better trained, aids in the public being better served and the City of Lincoln a great place to live.

Lincoln Fire & Rescue began utilization of a new indoor training space within the Municipal Services Center (MSC) the last quarter of 2013 allowing for inclement weather training. This indoor training center call TRIDENT (Technical Rescue Indoor Education and Training) Center was utilized a total 224hrs in the short time it was available. This indoor facility will be utilized for a variety of training evolutions to include but not limited to Physical Agility Testing (PAT) of firefighter applicants, company level training in various aspects of emergency response and technical rescue, as well as joint training evolutions between LF&R, the Health Department, CST and other local agencies.



Photo used with permission of the Journal Star

# Safety

Lincoln Fire & Rescue continues to be proactive to ensure the safety of its members. LF&R uses several avenues to resolve safety issues which are identified by employee's.

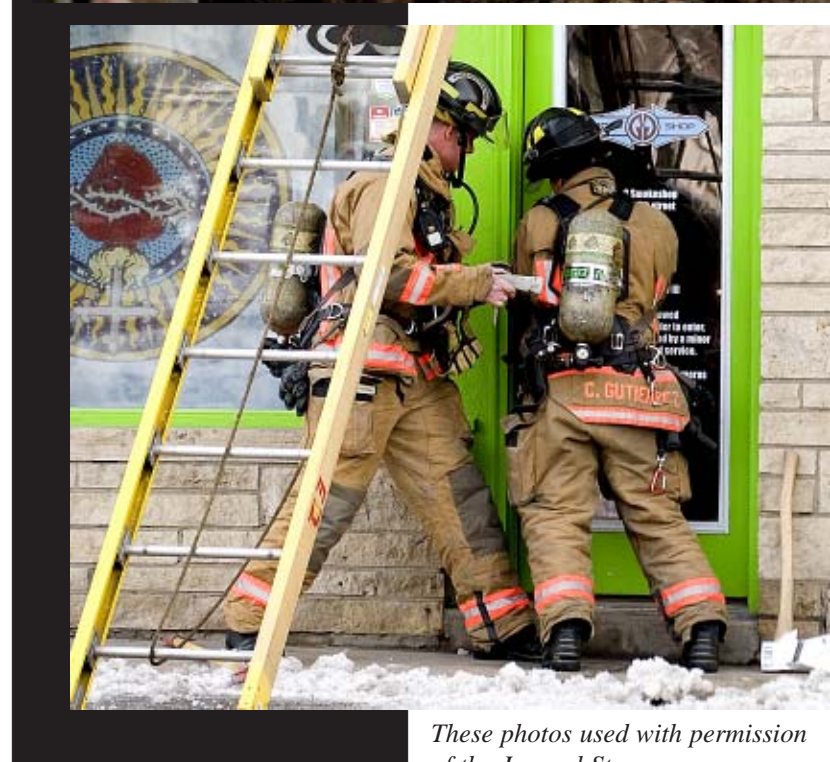
Since implementing the Near Miss reporting system in 2012 firefighters have used this avenue to report several Near Misses. These reports are reviewed by the department's safety officer and a report is issued to the members on lessons learned and recommended revisions to our emergency scene operations as well as our daily activities.

One of the responsibilities of the Incident Command Technician (ICT) is to provide pertinent daily safety messages. This is utilized as a reminder that everyone is responsible for their own safety, and provides awareness of safety issues to our members. These messages are delivered during our 7:15 shift briefing.

The Safety Committee reviews safety suggestions submitted by LF&R members. The committee's responsibility is to identify and resolve actions that are deemed unsafe. The committee works closely with the fire chief on the resolution of these items. Some of the items addressed this year were;

- Crew rotation during working structure fires
- Driving speed of apparatus during code 3 emergent responses
- Securing items in the passenger area of our units and meet industry standards
- The failure rate of EMS exam gloves currently being used by LF&R
- Violent crime matrix when responding to an active shooter incident
- Reviewed the rising cancer rates in firefighters

The City Risk Management injury reporting system identifies unsafe acts that may not be reported through our Near Miss reporting. All injury reports are reviewed by the department safety officer. This acts as a back up to the Near Miss reporting, and offers an additional avenue to track unsafe acts. By reviewing these reports resolutions to unsafe acts can be implemented.



*These photos used with permission of the Journal Star*

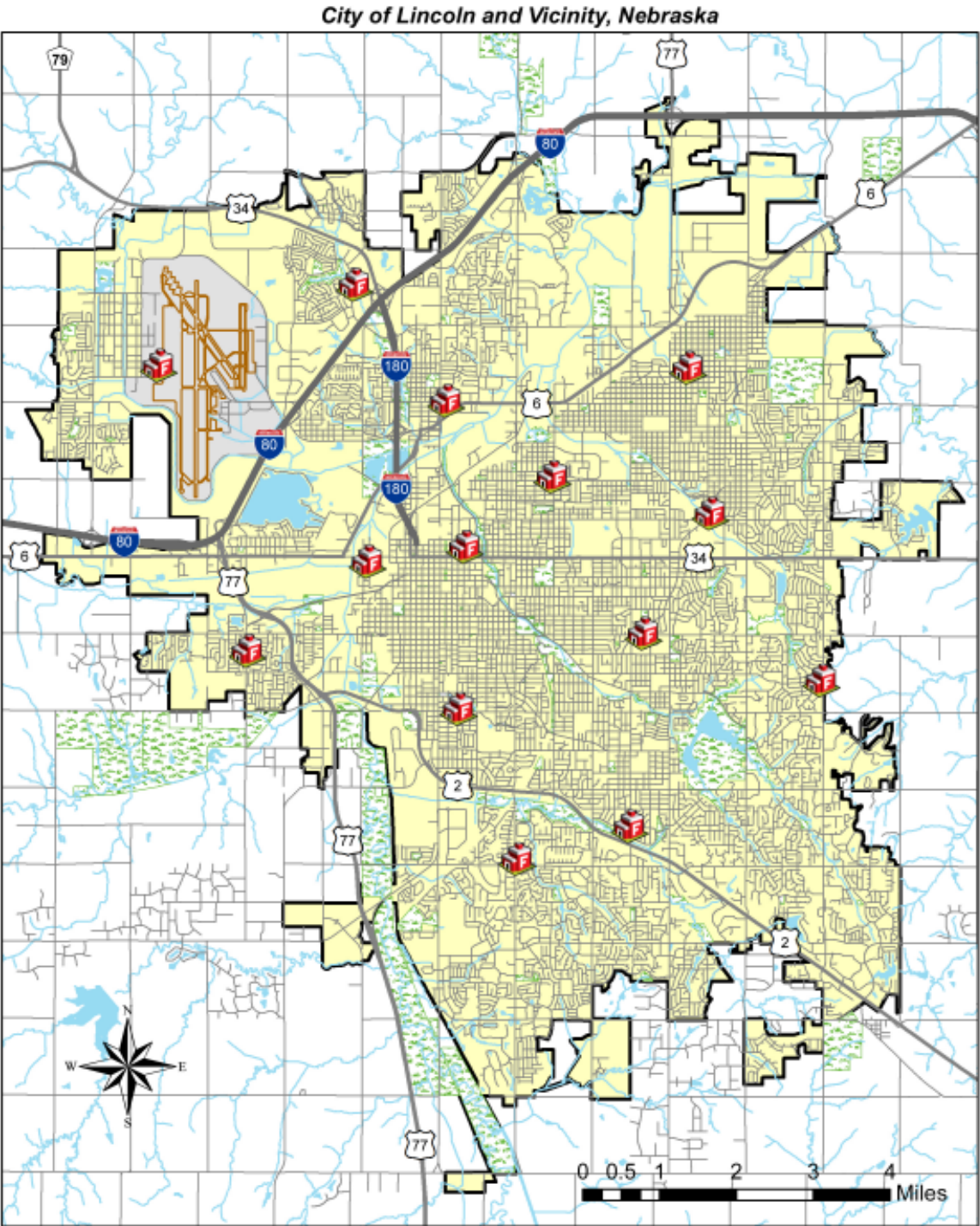


# Serving

<b><u>Resident Population</u></b>	265,404
<b><u>Land Area</u></b>	93.94 Square Miles
<b><u>Stations</u></b>	14
<b><u>Fire Response Zones</u></b>	144

## Physical Resources

Fire Stations .....	14
Engines(Pumpers) .....	14
Reserve Engines .....	3
(Ladder) Trucks .....	4
Reserve Truck .....	1
Medic Units .....	6
Reserve Medic Units .....	5
Battalions .....	1
EMS Supervisor .....	1
Hazardous Materials Unit .....	1
Technical (Heavy) Rescue Unit ...	1
Mobile Air Unit.....	1
Decon Trailer .....	1
Utility Trailer .....	1
Water Rescue Trailer .....	1
Support Vehicles .....	21
Mobile Fire Safety House .....	1





# Unit Activity

	Incidents	
	2012	2013
Battalion 1 .....	769	776
Battalion 2 .....	3	N/A

## Medic Units:

Medic 2 .....	3,519	3,509
Medic 3 .....	3,512	3,658
Medic 5 .....	2,833	2,774
Medic 6 .....	2,552	2,547
Medic 7 .....	3,114	3,211
Medic 8 .....	3,544	3,496
Medic 21 .....	163	178
Medic 24 .....	67	78
Medic 25 .....	110	131
Medic 211 .....	92	100
Medic 214 .....	112	113

**Battalion:** a unit typically consisting of multiple companies.

**Engine:** a fire apparatus vehicle equipped with a pump; water tank and a compliment of hose, tools, and equipment.

**Medic Unit:** a specially equipped vehicle used for transporting the sick or injured.

	Incidents	
	2012	2013
<b>Engines</b>		
Engine 1 .....	3,014	2,934
Engine 2 .....	1,704	1,646
Engine 3 .....	1,753	1,960
Engine 4 .....	1,232	1,322
Engine 5 .....	1,730	1,661
Engine 6 .....	1,510	1,623
Engine 7 .....	1,743	1,723
Engine 8 .....	2,027	2,077
Engine 9 .....	1,696	1,748
Engine 10 .....	1,785	1,775
Engine 11 .....	325	272
Engine 12 .....	1,181	1,252
Engine 13 .....	827	844
Engine 14 .....	917	990
Engine 21 .....	1	6
Engine 211 .....	1	0
Engine 225 .....	3	1

**Truck:** an aerial apparatus vehicle equipped with ground ladders, special rescue tools, smoke removal fans, tarps, and salvage equipment.

## Alternative Response Vehicle

**(ARV):** a vehicle that may be utilized in place of an engine or truck for incident response.

	Incidents	
	2012	2013
<b>Trucks:</b>		
Truck 1 .....	1,474	1,490
Truck 5 .....	929	969
Truck 7 .....	1,194	1,098
Truck 8 .....	971	1,014
Truck 21 .....	0	0
<b>EMS:</b>		
EMS 1 .....	1,127	1,213
Air 14 .....	471	477
HM 14 .....	173	195
ARV 1 .....	49	11
Bike 1 .....	20	18
Bike 2 .....	3	4
UT 1 .....	0	1
Brush 10 .....	16	4

# Total Response by Unit

	Alert	Fire	HazMat	Medical	Rescue Alarm	Other	Total	County
Fire Car #2	0	2	0	1	0	3	6	0
Chief Sellon	0	1	0	0	0	0	1	0
Chief Thavenet	0	4	2	0	2	1	9	0
Chief Murrell	0	1	1	0	1	0	3	0
Chief Jones	0	5	0	1	1	1	8	0
Chief Huff	0	2	0	1	0	0	3	0
Chief Pashalek	0	1	0	0	0	0	1	0
Chief Benes	0	7	0	0	0	0	7	0
Chief Borer	0	0	0	0	0	1	1	0
Chief Bonin	0	2	0	1	0	1	4	0
Chief Linke	0	3	0	0	0	0	3	0
Battalion 1	10	296	196	61	140	83	776	30
Engine 1	0	413	49	2,345	28	99	2,934	0
Engine 21	0	2	0	3	1	0	6	0
Medic 21	0	0	0	69	2	107	178	4
Mule 1	0	0	0	2	0	2	4	0
Truck 1	0	757	158	318	91	166	1,490	0
ARV 1	0	0	0	2	0	9	11	0
Bike Medic 1	0	0	0	0	0	18	18	0
Bike Medic 2	0	0	0	1	0	3	4	0
Utility Truck	0	0	0	0	1	0	1	0
<b>Total Station 1</b>	<b>10</b>	<b>1,496</b>	<b>406</b>	<b>2,805</b>	<b>267</b>	<b>494</b>	<b>5,468</b>	<b>34</b>
Engine 2	0	245	136	1,133	22	110	1,646	0
Medic 2	3	75	18	3,296	82	38	3,509	47
<b>Total Station 2</b>	<b>3</b>	<b>320</b>	<b>154</b>	<b>4,429</b>	<b>104</b>	<b>148</b>	<b>5,155</b>	<b>47</b>
Engine 3	0	291	33	1,526	31	79	1,960	5
Medic 3	7	59	14	3,481	71	33	3,658	90
<b>Total Station 3</b>	<b>7</b>	<b>350</b>	<b>47</b>	<b>5,007</b>	<b>102</b>	<b>112</b>	<b>5,618</b>	<b>95</b>
Engine 4	0	212	38	956	22	94	1,322	1
Medic 24	0	0	0	61	1	16	78	2
<b>Total Station 4</b>	<b>0</b>	<b>212</b>	<b>38</b>	<b>1,017</b>	<b>23</b>	<b>110</b>	<b>1,400</b>	<b>3</b>
Engine 5	0	227	47	1,282	21	84	1,661	10
Engine 225	0	1	0	0	0	0	1	0
Medic 25	0	2	1	108	5	15	131	3
Medic 5	1	50	15	2,592	79	38	2,774	136
Truck 5	0	491	109	148	64	157	969	12
<b>Total Station 5</b>	<b>1</b>	<b>771</b>	<b>172</b>	<b>4,130</b>	<b>169</b>	<b>294</b>	<b>5,536</b>	<b>161</b>

Continued on page 18

Total Response by Unit (Continued from Page 17)

	Alert	Fire	HazMat	Medical	Rescue Alarm	Other	Total	County
Engine 6	0	214	36	1,240	27	106	1,623	1
Medic 6	0	46	13	2,405	54	29	2,547	241
<b>Total Station 6</b>	<b>0</b>	<b>260</b>	<b>49</b>	<b>3,645</b>	<b>81</b>	<b>135</b>	<b>4,170</b>	<b>242</b>
Engine 7	0	206	38	1,376	27	76	1,723	0
Medic 7	0	46	23	3,037	75	30	3,211	60
Truck 7	<b>0</b>	<b>501</b>	<b>157</b>	<b>164</b>	<b>69</b>	<b>207</b>	<b>1,098</b>	<b>1</b>
<b>Total Station 7</b>	<b>0</b>	<b>753</b>	<b>218</b>	<b>4,577</b>	<b>171</b>	<b>313</b>	<b>6,032</b>	<b>61</b>
Engine 8	0	227	34	1,681	29	106	2,077	1
Medic 8	0	72	11	3,327	61	25	3,496	88
Truck 8	0	486	160	157	87	124	1,014	2
<b>Total Station 8</b>	<b>0</b>	<b>785</b>	<b>205</b>	<b>5,165</b>	<b>177</b>	<b>255</b>	<b>6,587</b>	<b>91</b>
EMS1	1	286	30	725	165	7	1,213	88
Engine 9	0	228	102	1,256	36	126	1,748	2
<b>Total Station 9</b>	<b>1</b>	<b>514</b>	<b>132</b>	<b>1,981</b>	<b>201</b>	<b>133</b>	<b>2,961</b>	<b>90</b>
Engine 10	1	231	54	1,325	23	142	1,775	0
Brush 10	<b>0</b>	<b>4</b>	<b>0</b>	<b>0</b>	<b>0</b>	<b>0</b>	<b>4</b>	<b>0</b>
<b>Total Station 10</b>	<b>1</b>	<b>235</b>	<b>54</b>	<b>1,325</b>	<b>23</b>	<b>142</b>	<b>1,779</b>	<b>0</b>
Engine 11	5	47	5	197	4	19	272	1
Medic 211	0	1	0	79	2	18	100	6
<b>Total Station 11</b>	<b>5</b>	<b>48</b>	<b>5</b>	<b>276</b>	<b>6</b>	<b>37</b>	<b>372</b>	<b>7</b>
Engine 12	0	109	33	986	13	111	1,252	1
<b>Total Station 12</b>	<b>0</b>	<b>109</b>	<b>33</b>	<b>986</b>	<b>13</b>	<b>111</b>	<b>1,252</b>	<b>1</b>
Engine 13	1	136	13	621	25	49	844	10
<b>Total Station 13</b>	<b>1</b>	<b>136</b>	<b>13</b>	<b>621</b>	<b>25</b>	<b>49</b>	<b>844</b>	<b>10</b>
Air 14	0	284	185	0	4	4	477	0
Engine 14	9	164	31	671	14	50	930	1
Haz Mat 14	0	3	184	2	1	5	195	0
Medic 214	0	0	0	62	1	50	113	3
<b>Total Station 14</b>	<b>9</b>	<b>451</b>	<b>400</b>	<b>735</b>	<b>20</b>	<b>109</b>	<b>1,715</b>	<b>4</b>
<b>FINAL TOTAL</b>	<b>38</b>	<b>6,440</b>	<b>1,926</b>	<b>36,699</b>	<b>1,382</b>	<b>2,442</b>	<b>50,271</b>	<b>846</b>



## Unit Responses by Type in the City

	Alert	Fire	HazMat	Medical	Rescue Alarm	Other	Total
Air 14	0	284	185	2	4	13	488
Battalion	10	299	196	33	139	104	781
Chiefs	0	26	3	3	4	4	40
Engine	16	2,941	648	16,579	318	1,250	21,752
EMS1	1	284	30	639	135	7	1,096
Other	0	2	0	1	1	3	7
Haz Mat	0	3	184	2	1	5	195
Medic	11	342	91	17,859	358	394	19,055
Truck	0	2,225	584	783	306	653	4,551
<b>TOTAL</b>	<b>38</b>	<b>6,406</b>	<b>1,921</b>	<b>35,901</b>	<b>1,266</b>	<b>2,433</b>	<b>47,965</b>



## Unit Responses by Type in County

	Alert	Fire	HazMat	Medical	Rescue Alarm	Other	Total
Battalion	0	1	0	29	1	0	31
Engine	0	12	1	19	5	1	38
EMS1	0	2	0	86	30	0	118
Medic	0	9	4	660	75	7	755
Truck	0	10	0	4	5	1	20
<b>TOTAL</b>	<b>0</b>	<b>34</b>	<b>5</b>	<b>798</b>	<b>116</b>	<b>9</b>	<b>962</b>



## Stations and Units

\* December 2013 \*

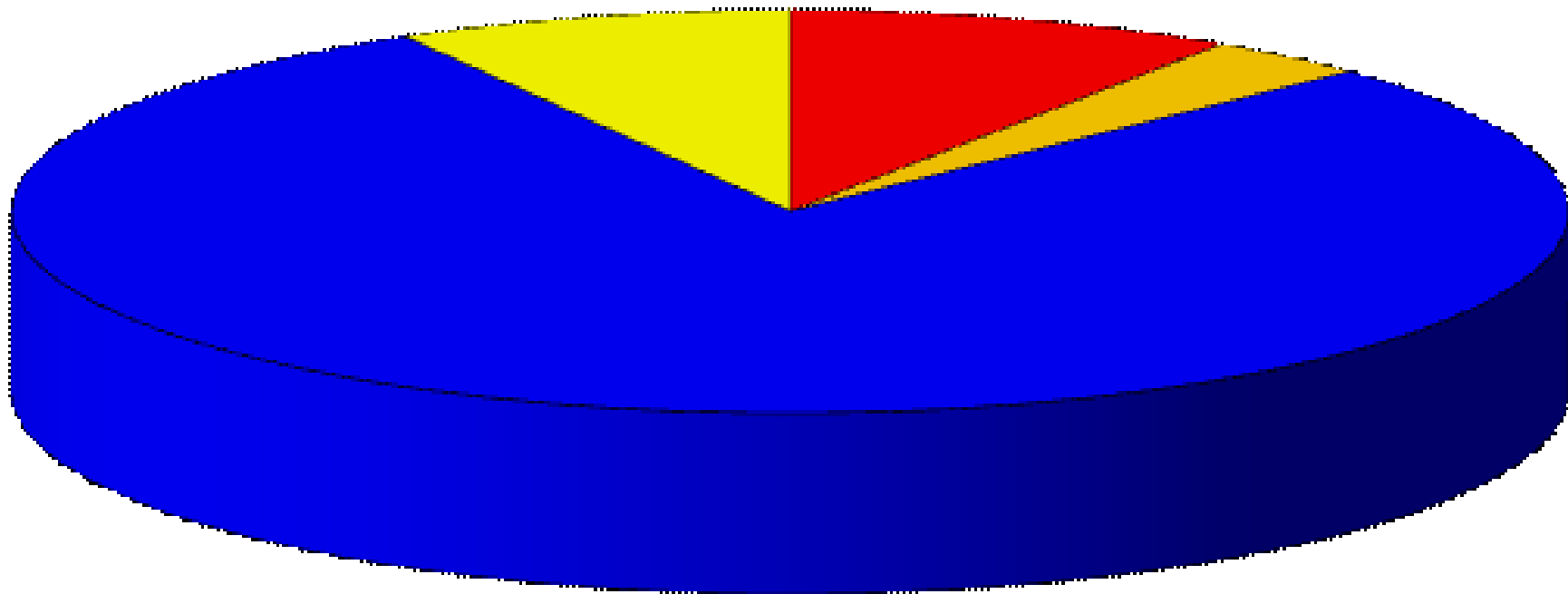
Stations	Engines	Trucks	Medic Units	Battalions	Other (Listed)
#1 - 1801 "Q" Street (02)	1	1	0 (1)	1	Dive Rescue Decon Trailer Trench Trailer Utility Vehicle
#2 - 1545 North 33rd (04)	1	0	1	0	Light Tower
#3 - 121 S 2nd Street (08)	1	0	1	0	--
#4 - 5600 South 27th (12)	1	0	0 (1)	0	
#5 - 3640 Touzalin Ave (07)	1	1	1 (1)	0	--
#6 - 5051 South 48th (16)	1	0	1	0	--
#7 - 1345 South Cotner (10)	1	1	1	0	--
#8 - 2760 South 17th (02)	1	1	1	0	--
#9 - 901 North Cotner (05)	1	0	0	1	EMS Supervisor
#10 - 1440 Adams Street (21)	1	0	0	0	--
#11 - 3401 NW Luke (24)	1 (1)	0	0 (1)	0	--
#12 - 2201 South 84th (06)	1	0	0	0	--
#13 - 1700 South Coddington (22)	1	0	0	0	--
#14 - 5435 NW First Street (21)	1	0	0 (1)	0	Haz/Mat Mobile Air
Logistics - 901 West Bond (21)	(3)	(1)			

(1) - Denotes 1 reserve unit

A reserve unit is an unstaffed apparatus that can be put in service with personnel when a front line apparatus needs repair or an apparatus that can be put into service if all other units are already deployed to other emergencies by recalling off duty personnel.

# Response Summary

## 2013 Response for LF&R

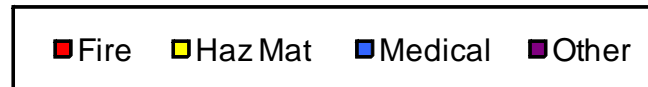
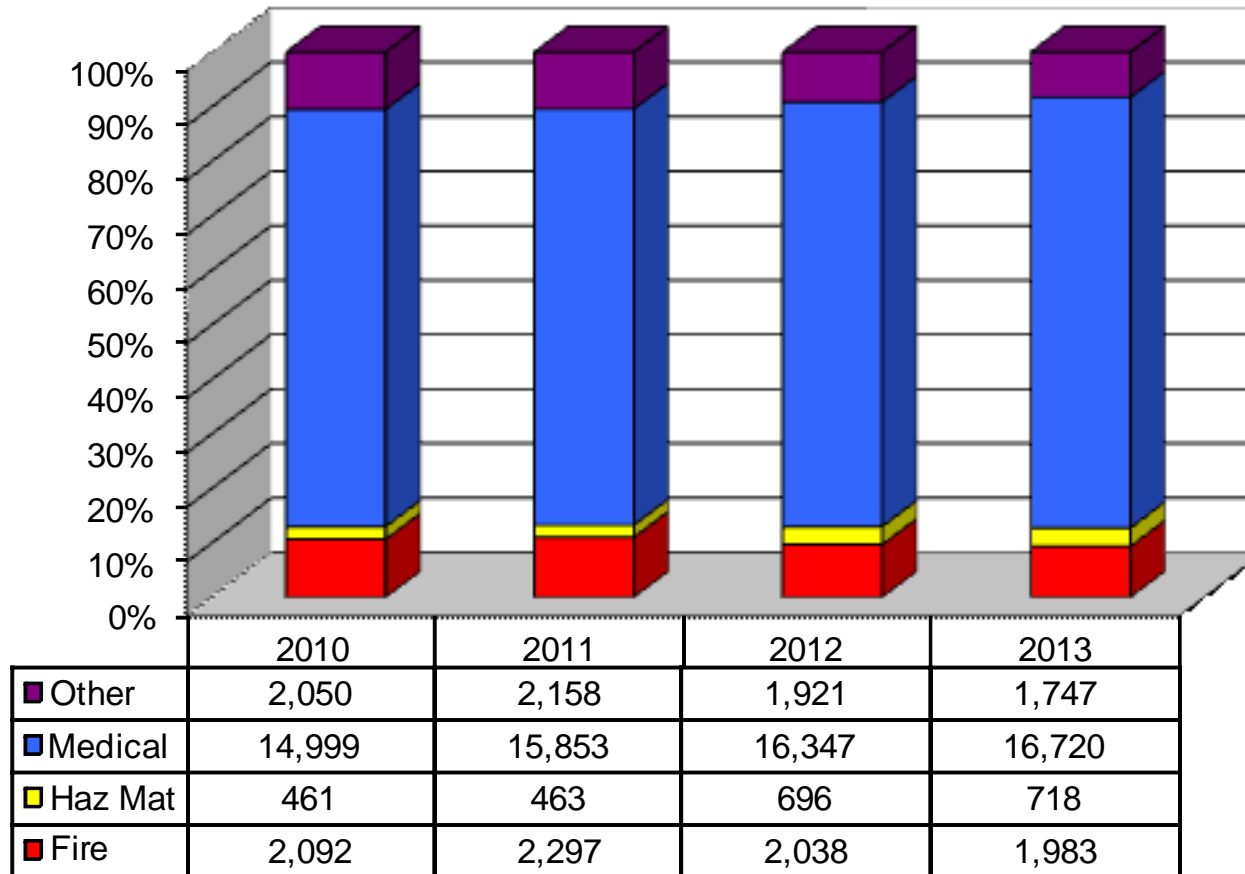


### LF&R Responses

Number of Rescue Alarms: 224  
Number of Life Threatening Medical Calls: 5,741  
Number of Public Education Events: 584  
Number of Persons Educated: 72,186  
Number of Standby Events: 189  
Number of Calls Outside the City: 668

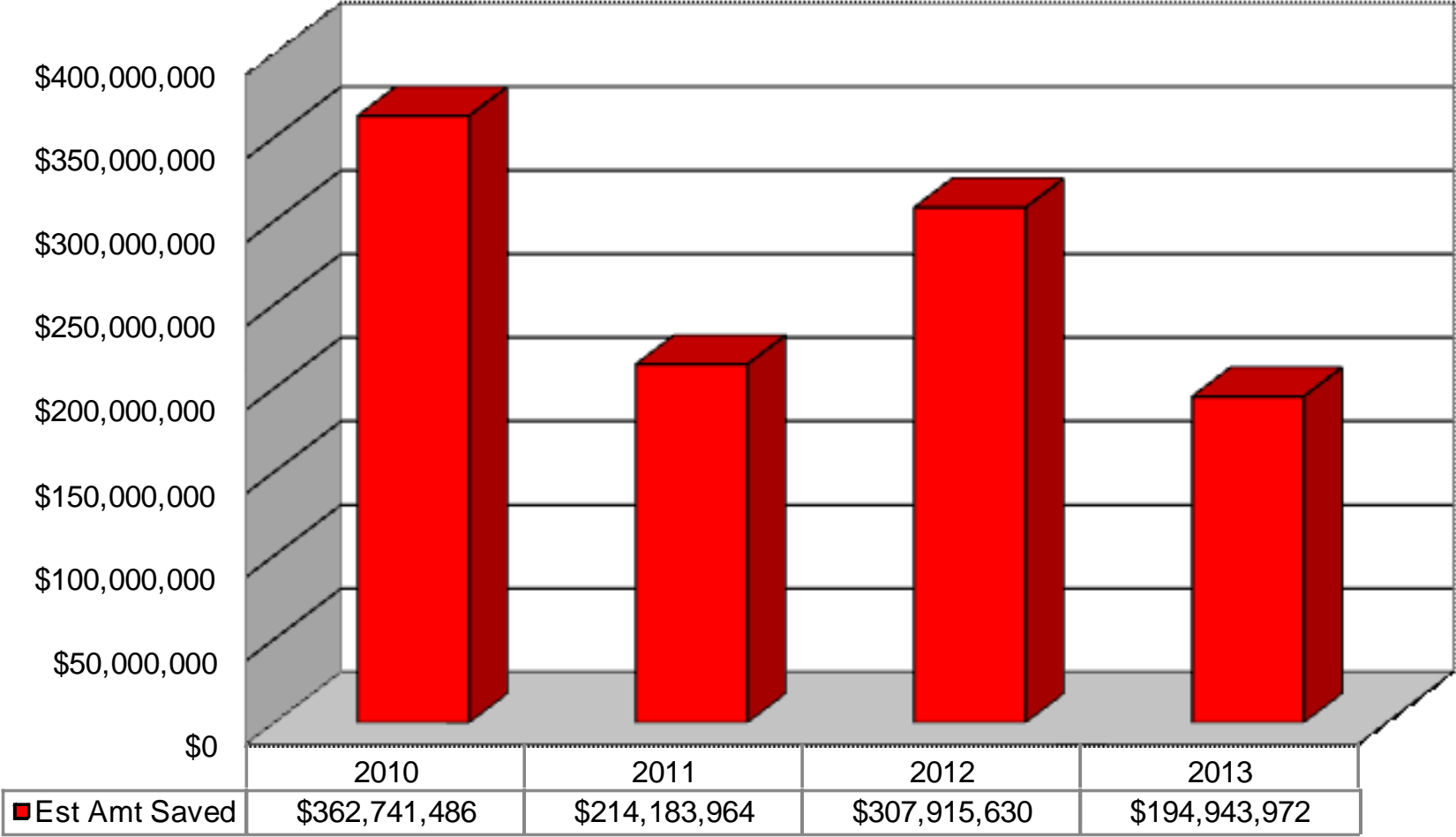
■ Fire Calls 1,983	■ Haz Mat 718
■ Medical 16,720	■ Other 1,747

# Total Incidents

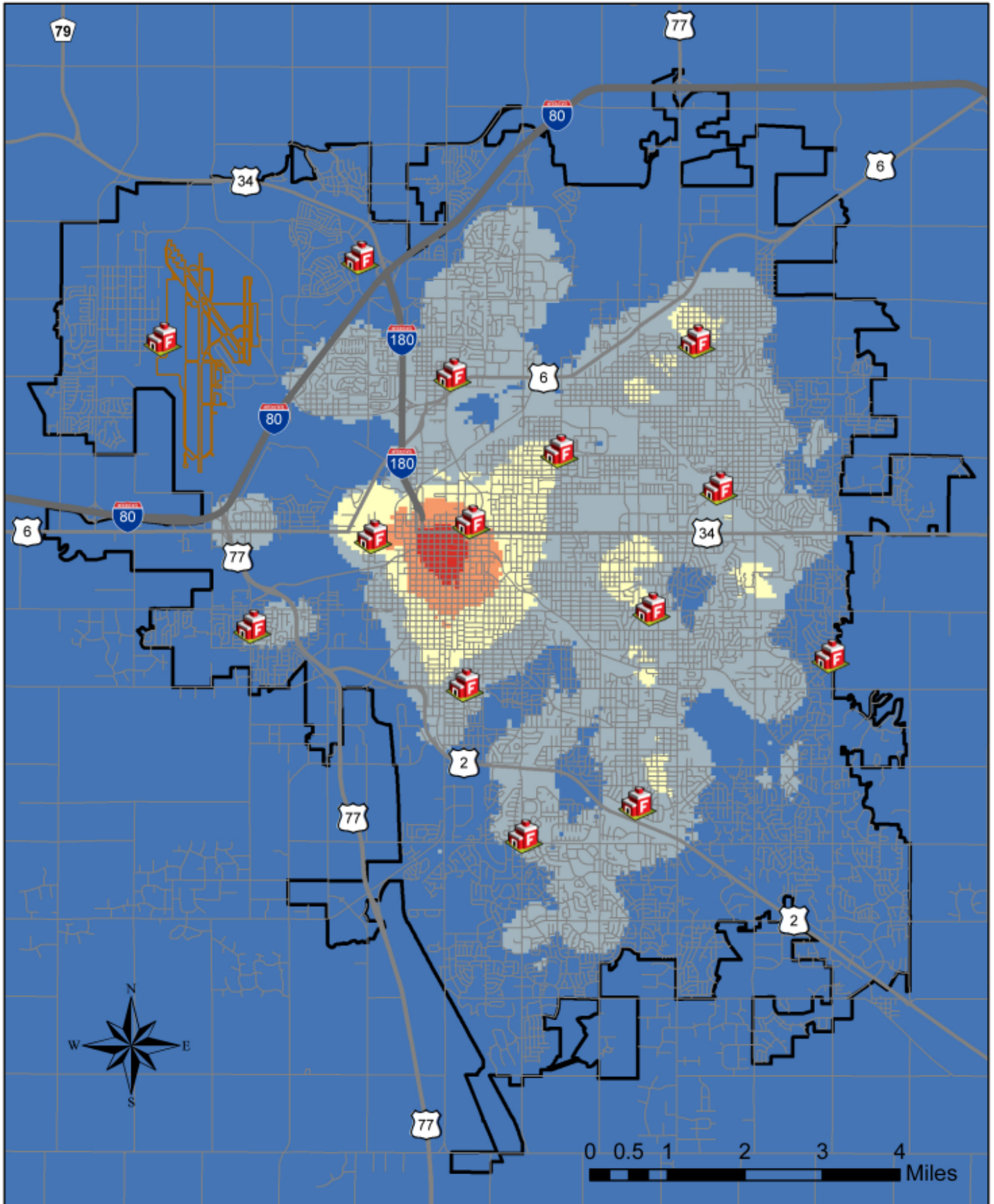




# Estimated Value of Property Saved



# City of Lincoln and Vicinity, Nebraska



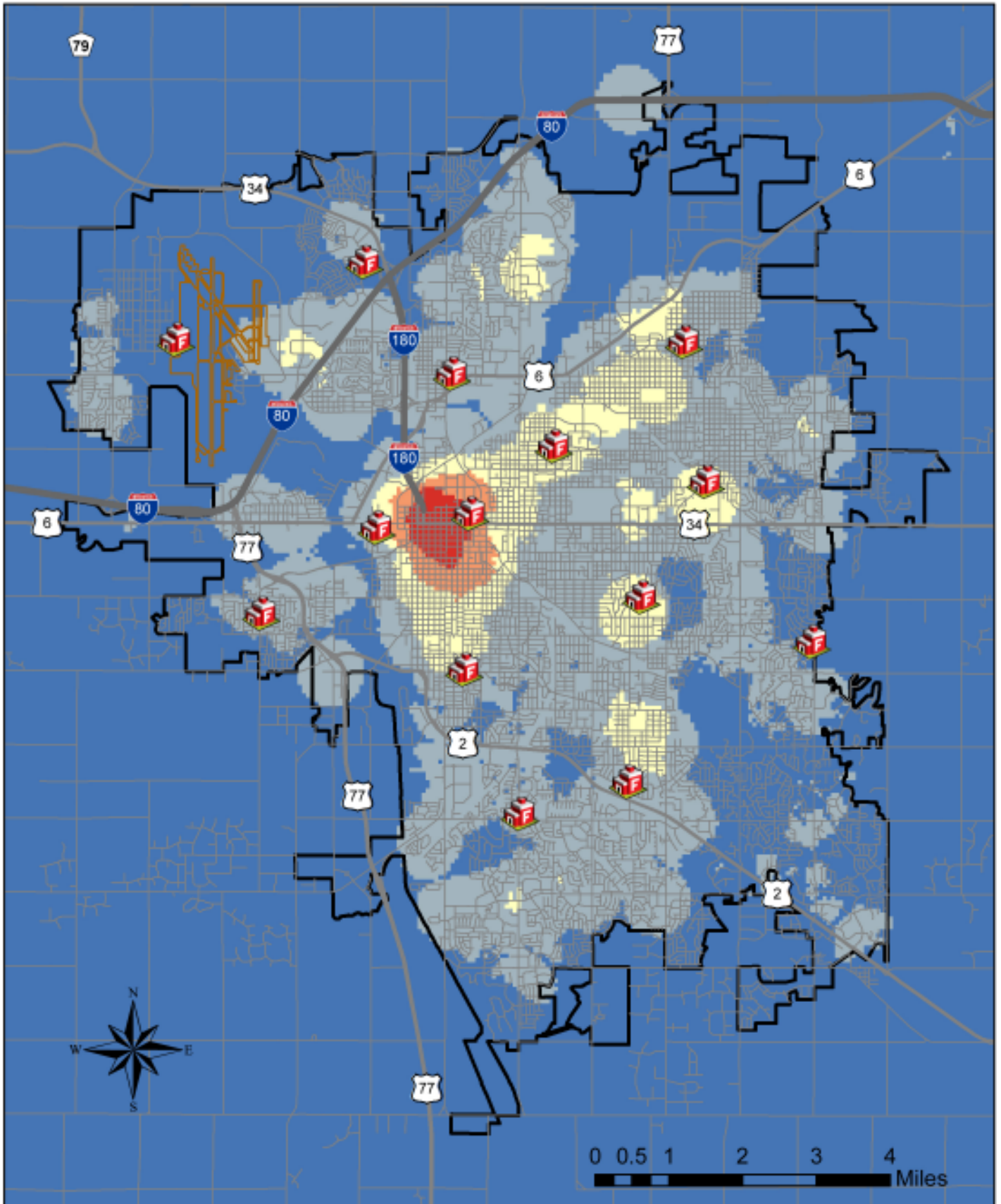
## 2013 All Incidents Point Density

- 0 - 183
- 184 - 614
- 615 - 1,218
- 1,219 - 1,940
- 1,941 - 2,749

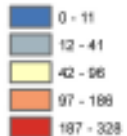
Note: This map is provided by Lincoln Fire & Rescue for reference purpose only.



# City of Lincoln and Vicinity, Nebraska



Fire Incidents 2013 Point Density

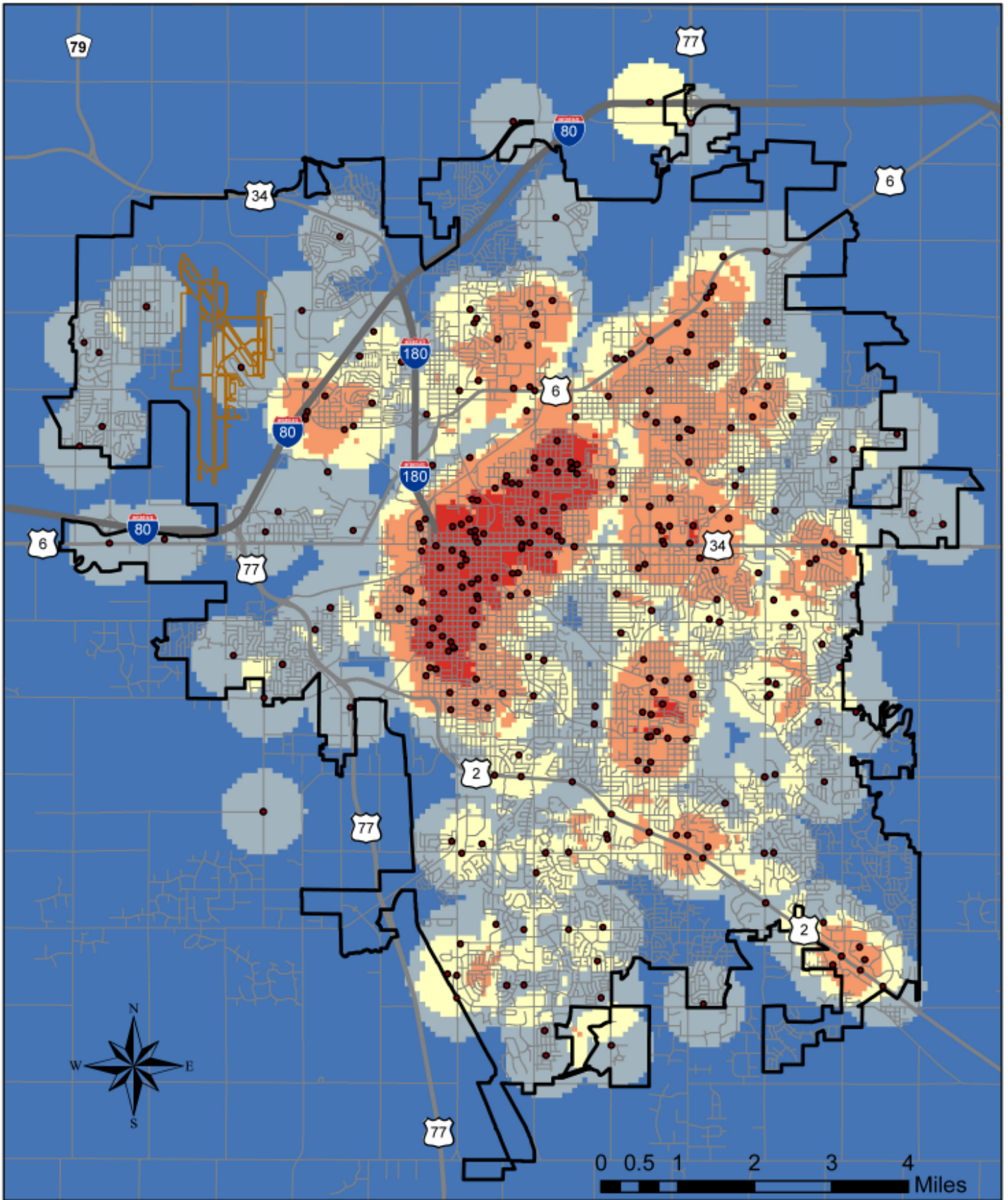


Note: This map is provided by Lincoln Fire & Rescue for reference purpose only.





# City of Lincoln and Vicinity, Nebraska



Note: This map is provided by Lincoln Fire & Rescue for reference purpose only.

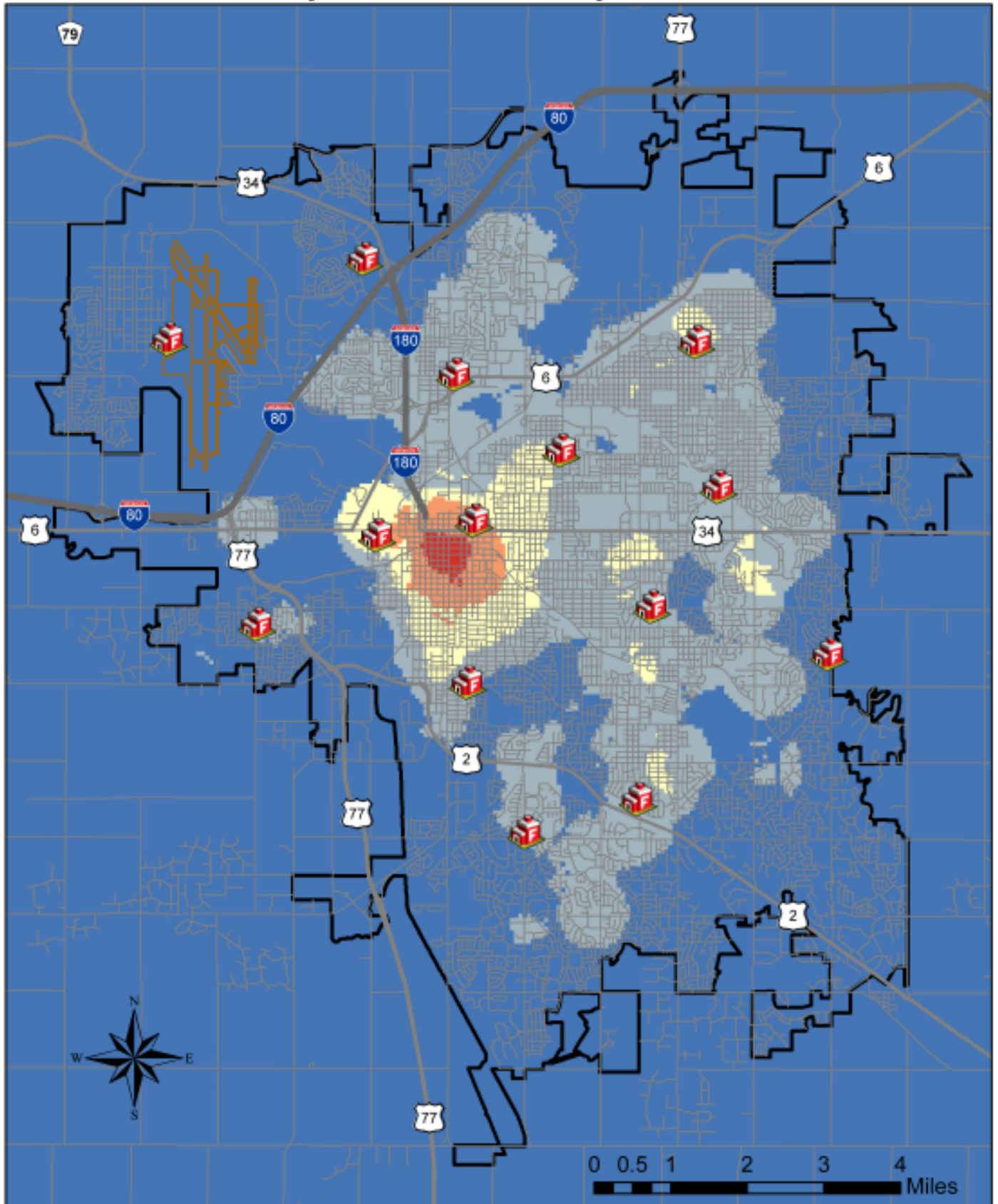
## Hazmat Incidents 2013 PointDensity

- 0
- 1 - 2
- 3 - 5
- 6 - 11
- 12 - 24
- Incidents





# City of Lincoln and Vicinity, Nebraska



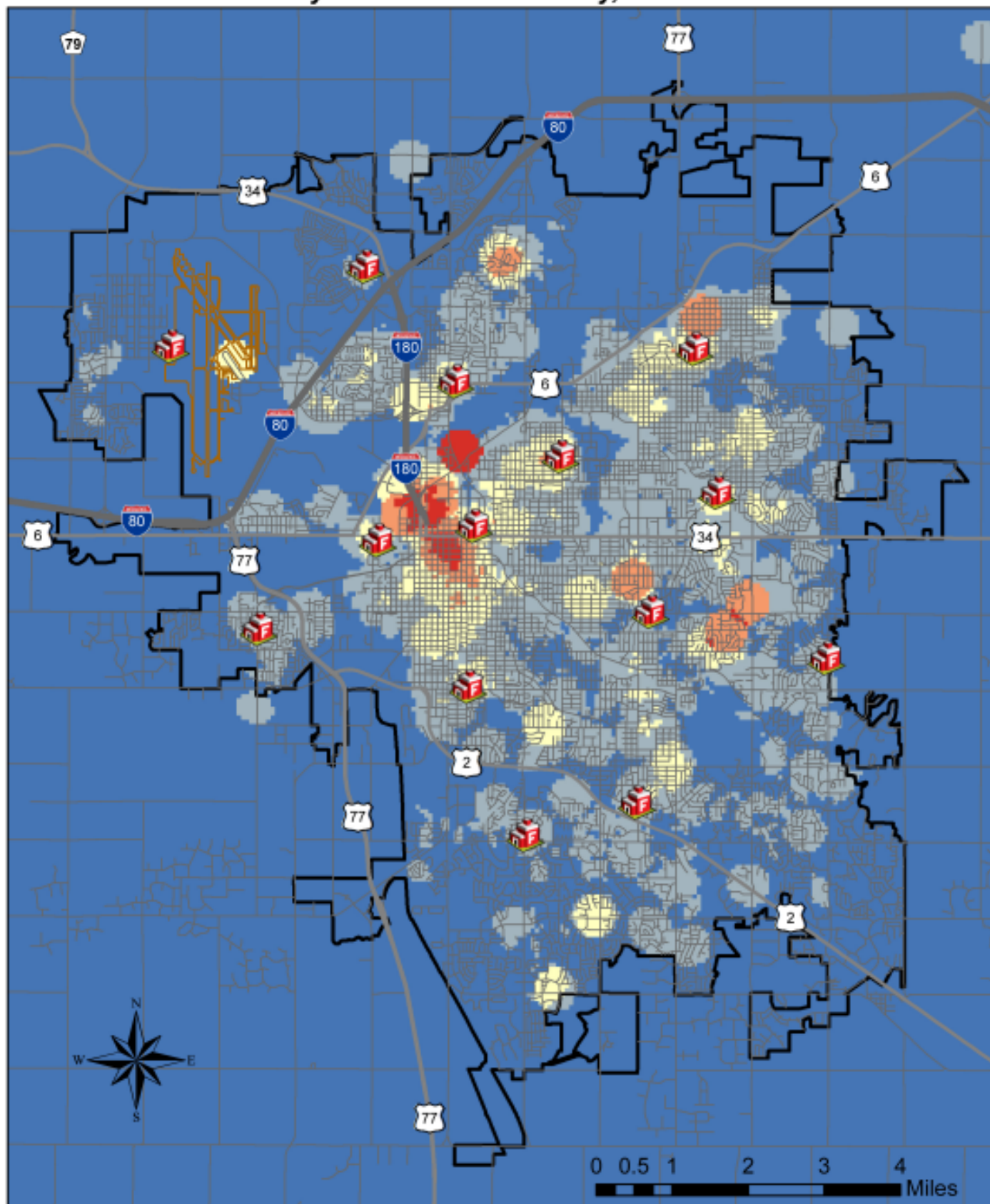
Note: This map is provided by Lincoln Fire & Rescue for reference purpose only.

## 2013 Medical Incidents Point Density

- 0 - 152
- 153 - 509
- 510 - 1,010
- 1,011 - 1,801
- 1,802 - 2,281



## City of Lincoln and Vicinity, Nebraska



### 2013 \*Other Incident Point Density

Note: This map is provided by Lincoln Fire & Rescue for reference purpose only.

- 0 - 14
- 15 - 47
- 48 - 109
- 110 - 201
- 202 - 311



\* Standby, Alerts 1 2 3, Service Calls, SpecDuty, Elevator, Special Incidents

# Incident Type Report

Method	Number Incidents		
Fire	233	Medical A	2,808
Fire A	1,282	Medical B	4,300
Fire B	207	Medical C	3,355
Fire C	255	Medical D	5,465
Fire M	6	Medical E	276
CoDet	194	Medical ALS	98
Haz1	9	Medical Omega	92
Haz 2	149	Medical OmegaD	75
Haz 21	41	Medical RS Alarm	224
Haz 3	147	Alert 1	1
Haz Pkg	11	Alert 2	10
Odor	167	Other	1,724
Medical	27	Standby	12
		Scheduled Standby	189
		<b>Total Incidents</b>	<b>21,357</b>

**Alert:** Aircraft Related Emergencies  
**Fire A:** Fire Alarm Automatic System or Reported  
**Fire B:** Fire Threating Building  
**Fire C:** Fire with Confirmed Smoke or Flame  
**Haz Mat:** Hazardous Materials Related Leaks & Spills  
**Medical A,B, & C:** Medical Emergency

**Medical D:** Life Threatening Medical Emergency  
**Medical E:** Life Threatening Cardiac/Respiratory Emergency  
**Medical Mutaid:** Medical Call - Assisting Rural Agency  
**Medical Omega:** Inter facility Non-Emergency Transfer  
**Medical Omega D:** Inter Facility Emergency Transfer  
**Medical - RS Alarm:** Person Trapped or Rollover Vehicle Accident  
**Other:** All Other Types of Dispatches



## Human Resources

This functional area covers several different aspects of personnel management.

All promotional exam processes are reviewed and if necessary are re-validated. The testing processes are reviewed and source materials are updated to maintain relevant testing material for each position. Promotional tests are staggered to occur every two years for fire apparatus operator, captain, and battalion chief positions.

Management policies/reference source documents are also reviewed annually and revised as needed.

HR oversees the Recruitment Committee who revised our brochures and target areas with updated information and in multiple languages. Our website also has a translation drop box for those wishing to view information in other languages. Our goal is to recruit, hire, and retain qualified individuals who represent the values and uphold the mission of LF&R. It is a desire and a commitment on the part of the City of Lincoln to be diverse and representative of the community and the citizens we serve.

HR also assists employees with obtaining and navigating through policies, municipal code and other



documents to accommodate employees with programs, services, and benefits to support their personal/professional lives.

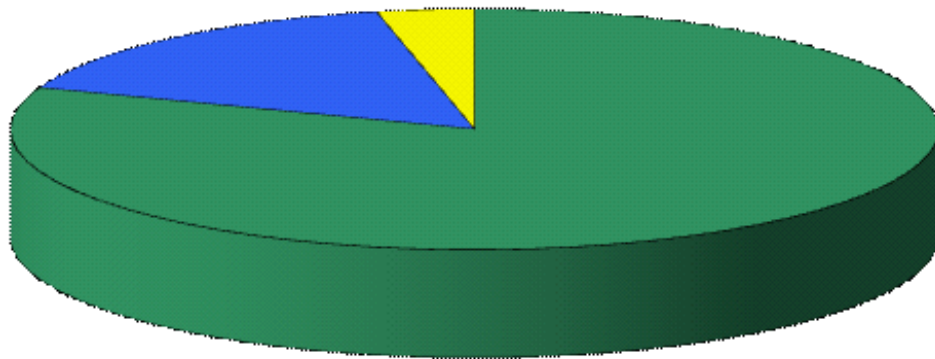
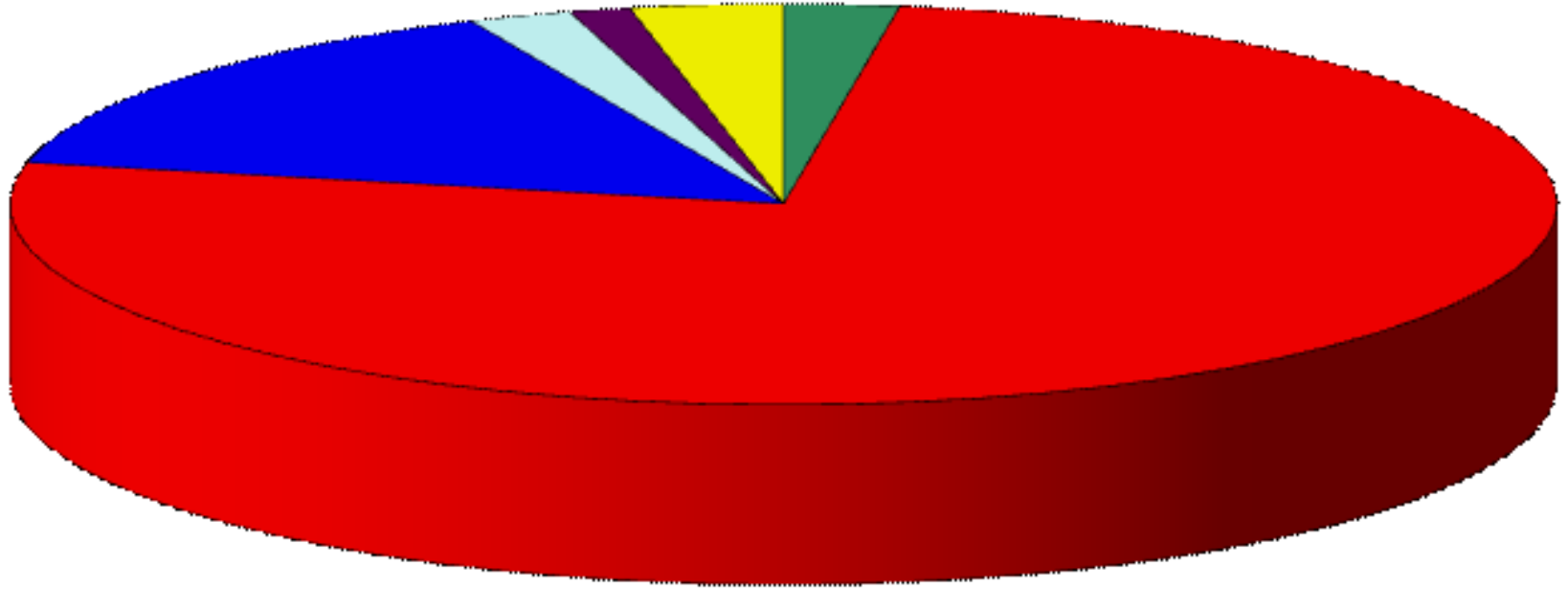
HR participates in labor negotiations, Leadership Team meetings, and is a liaison with other relevant city agencies.

Lastly, HR is responsible for ensuring that the organization is compliant with all local, state, and federal employment laws or ordinances and coordinates necessary training for employees with respect to employment laws and ordinances.



# 2013-2014 Budget Summary

Department Total - \$29,975,688



- Administration: \$766,883
- Emergency Services Division: \$24,161,042
- EMS Transport Division: \$4,797,657
- Logistics Division: \$687,657
- Training Division: \$405,580
- Urban Search & Rescue (NETF1): \$1,016,989

- General Fund: \$24,161,042
- Ambulance Service Fund: \$4,797,657
- Urban Search & Rescue FEMA Funded: \$1,016,989

## Human Resources

Number of EEO Complaint Investigations .....	0
Number of EEO Investigations On-going .....	0
Number of EEO Investigations On-going over 60 days .....	0
Number of NEOC .....	0
Number of Grievances Filed .....	7
Number of Grievances Withdrawn .....	1
Number of Grievances Resolved at Department Level .....	6
(Deny = 3, Affirm = 3)	

## LF&R Company Business Inspections

Number of Inspections .....	4,920
Number of Preplans Completed .....	84

## Investigations

*Provided by the Bureau of Fire Prevention*

Number of Fire Investigations .....	185
Number of Code Compliance Inspections .....	3,489
Number of Operational and Occupancy Permits Issued .....	1,973
Number of Bomb Calls .....	31
Explosives and Ammo Pickups .....	20



# Cities Similar\* to Lincoln with Ambulance Transportation Services

2012/2013 Data

City	State	City Population	Miles Distance from Lincoln	MSA Rank	Area	Total Fire Budget	Budget from General Fund	Citizens Per FTE	Cost Per Citizen	Cost Per FTE	Accredited
Omaha	NE	438,646	56.43	58	194.00	72,075,115	70,575,115	689	160.89	113,147.75	No
<b>Lincoln</b>	<b>NE</b>	<b>258,379</b>	<b>0.00</b>	<b>154</b>	<b>90.83</b>	<b>28,015,840</b>	<b>22,625,653</b>	<b>858</b>	<b>87.57</b>	<b>92,998.64</b>	<b>Yes</b>
Madison	WI	233,209	484.92	89	84.70	46,000,000	46,000,000	629	197.25	123,989.22	No
Des Moines	IA	203,433	189.8	88	82.50	33,421,814	32,145,685	719	158.02	118,098.28	No
Springfield	MO	160,660	367.33	112	82.49	16,520,476	16,520,476	708	102.83	72,777.43	Yes
Rockford	IL	152,222	476.11	145	61.95	39,013,240	39,013,240	532	256.29	163,409.93	Yes
Average		241,092	262.43	108	99.41	39,174,414	37,813,362	689	160.47	109,570.21	
<b>Lincoln</b>	<b>NE</b>	<b>258,379</b>	<b>0.00</b>	<b>154</b>	<b>90.83</b>	<b>28,015,840</b>	<b>22,625,653</b>	<b>858</b>	<b>87.57</b>	<b>92,998.64</b>	<b>Yes</b>
Above Avg		17.288		46				169			
Below Avg			-262		-9	-11,158,574	-15,187,709		-73	-16572	

Estimates of the Population of Metropolitan Statistical Areas and Rankings: July 1, 2012 to July 1, 2013  
<http://www.census.gov/popest/data/metro/totals/2012/index.html>

\*Population between half & twice Lincoln's and less than 500 miles distance.

# Logistics Division

The Logistics Division is responsible for a continuous preventative maintenance program for 63 vehicles to ensure cost effective and safe efficient operation. Emergency vehicles include 14 engine companies, 3 aerial pumper companies and 1 aerial ladder company, 11 medic units, 1 haz mat vehicle, and 1 mobile air unit. The department has 3 reserve engine companies, 1 reserve aerial pumper, 1 EMS Supervisor, 21 support vehicles, 1 fire safety house, 1 mass casualty decon trailer, 1 tow vehicle, 1 tech rescue trailer, 1 utility trailer and 1 water rescue trailer.

The Logistics Division of LF&R employs three Emergency Vehicle Technicians (EVT) whom are trained specifically for repairs on apparatus and ambulance repairs. This is extremely valuable as we maintain safe apparatus and abide by NFPA standards.

Along with maintaining response vehicles, the Logistics Division maintains all equipment mounted on the vehicles including 8 generators, 12 power saws and 5 rescue tools.

The Logistics Division repairs and certifies 140 SCBA's, 300 face pieces, and three breathing air compressors and coordinates annual pump test of 21 apparatus. Coordinates testing, inventory and repair for 40,000 feet of fire hose,

coordinates annual aerial testing and ground ladder testing of 1,650 feet of ladders. Repairs and maintains 14 lawn mowers, 14 snow blowers and snow removal at 13 fire stations, and other facilities.

An average of 600 plus apparatus repair orders are generated each year. LF&R annual fleet mileage was 433,769 miles.

All station repairs, remodels and additions as well as planning and design is coordinated by the chief of logistics and working closely with purchasing and vendors. All station supplies as well as firefighter gear (maintaining and specification is coordinated in the Logistics Division).

Driver's re-certification is coordinated by the logistics chief. The division chief of logistics is also responsible for specifications for new engine, truck, and medic units replacement and purchase.

The Logistics Division is also responsible for research and development of alternate fuels and vehicles as well as developing ways to become more efficient ways for our fleet repairs and testing new products.

Our responsibilities have grown to include management of turn out gear, which involves bi-annual inspection from

our service provider, along with issuing any and all equipment for personal protective clothing.

An air tech has been added to the Logistics Division as a support for respiratory equipment testing and minor repairs. This tech oversees the flow testing of our SCBA bottles, checking pressures and also checking all personnel for mask fitting, as well as NFPA surprise inspections. He also maintains and repairs all of our certified breathing air compressors for SCBA refilling at Stations 5, 6 and 14.

The stores clerk has many responsibilities as well, including filling medical vending machines located in the hospitals. This employee also fills numerous tasks with turn out gear and loose equipment i.e. gloves, hood socks, etc.

The Logistics Division successfully started in October of 2012 and completed March 1st of 2013 the department's first medic unit remount, resulting in a cost savings of over \$80,000 over the cost of a new ambulance. The Logistics Division plans on completing four more remounts in 2014.



# Accident Mileage Report 2013

*Accident shall be defined as:*

*A traffic collision also known as a traffic accident, motor vehicle collision, motor vehicle accident, car accident, automobile accident, Road Traffic Collision (RTC) or car crash, occurs when a vehicle collides with another vehicle, pedestrian, animal, road debris, or other stationary obstruction, such as a tree or utility pole. Traffic collisions may result in injury, death and property damage.*

([http://en.wikipedia.org/wiki/Traffic\\_collision](http://en.wikipedia.org/wiki/Traffic_collision))

<u>Unit ID</u>	<u>Unit #</u>	<u>Mileage</u>	<u># of Accidents</u>	<u>Miles Per Accident</u>
E1	36025	9,298	1	9,298
E2	36015	9,484	1	9,484
E3	36024	11,631	0	0
E4	36017	7,557	0	0
E5	36039	8,628	1	8,628
E6	36041	10,726	0	10,726
E7	36043	8,465	2	4,233
E8	36038	8,677	1	8,677
E9	36042	9,612	0	0
E10	36040	10,524	1	10,524
E11	36014	3,598	1	3,598
E12	36016	9,581	0	0
E13	36023	7,331	0	0
E14	36037	8,309	2	4,155
E21	36012	929	0	0
E211	36011	1,616	0	0
E225	36013	3,698	0	0

**Total Accidents: 10**  
**Total Miles Per Accident: 12,966**  
**Total Miles Driven: 129,660**

<u>Unit ID</u>	<u>Unit #</u>	<u>Mileage</u>	<u># of Accidents</u>	<u>Miles Per Accident</u>
T1	36047	7,077	0	0
T5	36020	7,307	0	0
T7	36021	8,867	1	8,867
T8	36019	8,124	1	8,124
T21	36010	3,089	0	0

**Total Accidents: 2**  
**Total Miles Per Accident: 16,991**  
**Total Miles Driven: 34,464**

Accident Mileage Report (Continued from Page 35)

<u>Unit ID</u>	<u>Unit #</u>	<u>Mileage</u>	<u># of Accidents</u>	<u>Miles Per Accident</u>
M2	36050	30,197	2	15,099
M3	36049	29,250	0	0
	36054	5,804	0	0
M5	36052	32,218	1	32,218
	36054	108	0	0
M6	36048	24,302	1	24,302
	36054	5,628	1	5,628
M7	36053	14,589	0	0
	36054	5,040	0	0
M8	36051	18,215	1	18,215
M21	36031	332	0	0
	36048	1,258	0	0
	36049	1,314	0	0
	36051	2,024	0	0
	36052	84	0	0
	36053	2,217	0	0
	36054	19	0	0
M24	36029	941	0	0
M25	36027	2,451	0	0
M211	36030	1,884	0	0
M214	36035	1,959	0	0
M31	36034	293	0	0

**Total Accidents: 6**  
**Total Miles Per Accident: 30,021**  
**Total Miles Driven: 180,127**



**Total Accidents for All Vehicles: 18**  
**Total Miles Driven for All Vehicles: 344,251**  
**Total Miles Per Accident for All Vehicles: 19,125**  
**Total Accidents Per 100,000 for All Vehicles: 6**

## Urban Search & Rescue - NE-TF1

In 1991, Lincoln Fire & Rescue became the sponsoring agency for Nebraska Task Force 1 (NE-TF1). NE-TF1 is one of 28 Federal Emergency Management Agency Urban Search & Rescue (FEMA US&R) task forces in the United States.

As a member of the National Response System, personnel from Lincoln's US&R task force have responded to many disasters of national significance including: the Oklahoma City bombing of the Alfred P. Murrah Federal Building in April 1995, the attacks on the World Trade Center towers and the Pentagon following the events of September 11, 2001, to Louisiana and Mississippi in the aftermath of Hurricanes Katrina and Rita in September of 2005; to the tornado-devastated town of Greensburg, Kansas in 2007; Texas for Hurricane Dean in August 2007; and Georgia and Florida for Hurricanes Dolly, Gustav, and Ike in 2008. In 2009, NE-TF1 members assisted FEMA with coordinating US&R personnel and resources for the Presidential Inauguration in Washington, DC and in 2010 NE-TF1 members supported the earthquake in Haiti. 2013 was an active year for NE-TF1 and was deployed to Moore, Oklahoma to a devastating tornado and in September to Boulder, Colorado to assist with significant flooding. Both deployments were significant responses for NE-TF1 with a considerable amount of good search & rescue and water rescue work provided to those communities devastated by those significant disasters.

Of the approximately 190 NE-TF1 task force members, 120 are Lincoln Fire & Rescue employees. Task force equipment, supplies, and a fleet of response vehicles valued at over \$6M are maintained in a constant state of readiness for



deployment. The task force must be able to deploy to natural or man-made disasters within four hours of notification by the Federal Emergency Management Agency.

Lincoln Fire & Rescue's partnership with the federal government has provided invaluable training and specialized equipment that otherwise would not have been possible if funded locally. Since 1991, the City of Lincoln, State of Nebraska, neighboring states, and region are beneficiaries of

the knowledge and experience that Lincoln Fire & Rescue personnel have acquired due to our participation in the National Urban Search & Rescue program.

In 2013 NE-TF1 completed several initiatives required by FEMA. Those programs included to upgrade our equipment and training for our personnel to safely provide search, rescue and extraction within a contaminated environment of hazardous materials. All 190 personnel participated within that initiative. FEMA also required all 28 task force teams to implement a robust water rescue component as function within our Task Force. NE-TF1 provided specialized water rescue training program and purchased all the necessary water rescue equipment including; boats, trailers, and personal protective equipment to work in a water environment.