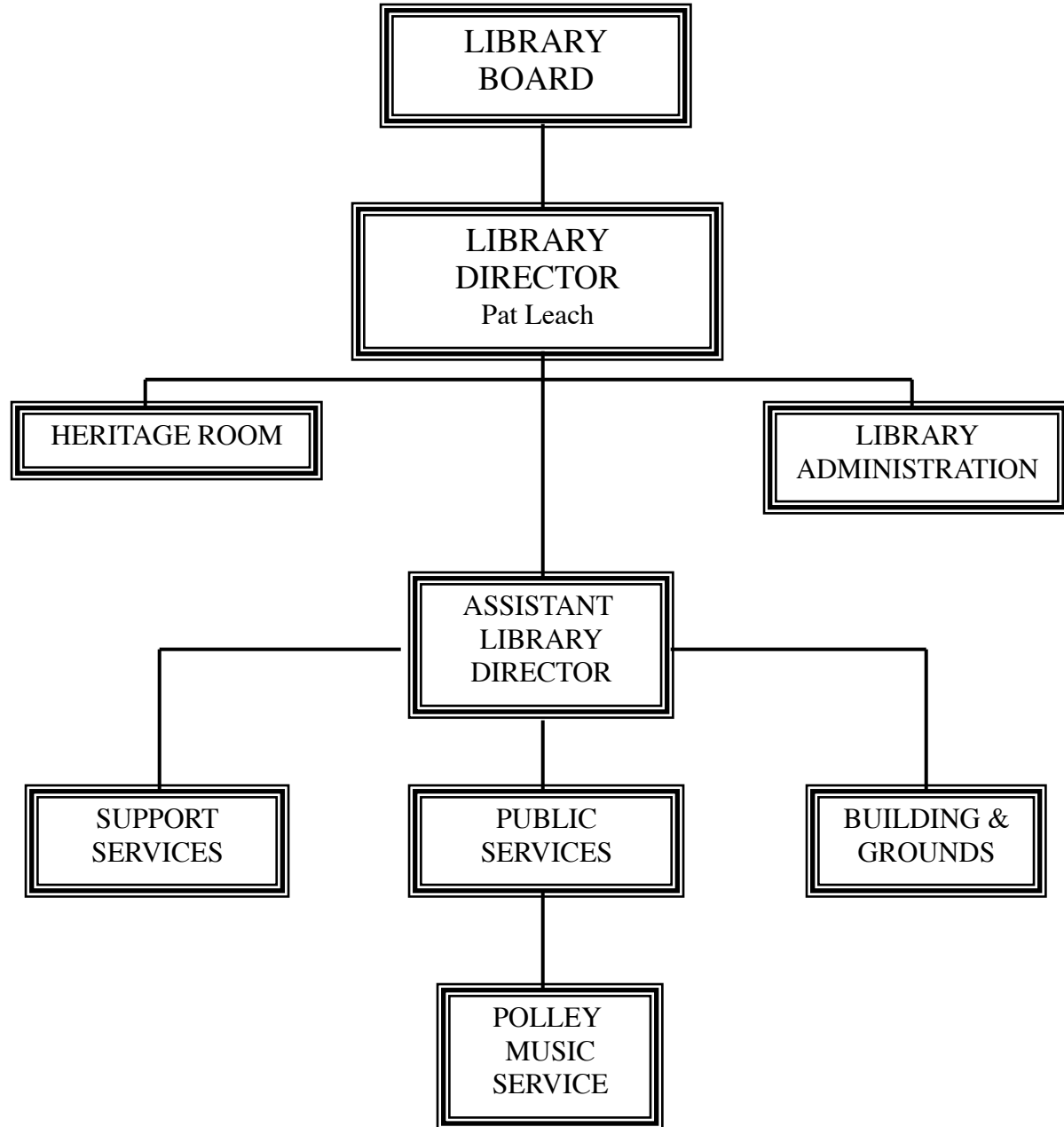


LINCOLN CITY LIBRARIES



LIBRARY DEPARTMENT

	2010-11 <u>Actual</u>	2011-12 Adopted <u>Budget</u>	2012-13 Council's <u>Budget</u>	2013-14 Council's <u>Budget</u>
FUNDING SOURCE SUMMARY				
City Property Tax		5,725,729	6,247,442	6,319,865
County Library Tax		658,902	684,148	692,079
Interest		28,000	14,000	16,000
Miscellaneous		812,925	435,990	449,099
Balances		621,494	645,000	645,000
Lillian Polley Trust		94,826	96,743	98,170
Heritage Room		36,128	38,430	39,917
Total Library - All Funding Sources		7,978,004	8,161,753	8,260,130
EXPENDITURE SUMMARY				
Personnel	5,674,068	5,802,857	5,986,907	6,059,014
Supplies	152,379	177,900	166,800	150,900
Serv. & Charges	1,165,799	1,182,247	1,183,546	1,211,816
Equipment	845,186	815,000	824,500	838,400
Transfers	2,463	0	0	0
Debt	0	0	0	0
Total Library - All Funds	7,839,895	7,978,004	8,161,753	8,260,130

SUMMARY OF CHANGES FOR 2012-14

2012-13 Library Fund

1. Implement new fee for interlibrary loan service.
2. Eliminate the youth fine rate and only have one late fine rate equal to the current adult fine rate. Also lower the maximum fee threshold.
3. Eliminate .5 employees due to 3 staff persons taking advantage of the voluntary elective reduction in schedule as per the LCEA union contract.

2013-14 Library Fund

1. Reduce .8 Library Service Associate due to anticipated reorganization of interlibrary loan service.

2012-13 Lillian Polley Trust

1. No significant changes.

2013-14 Lillian Polley Trust

1. No significant changes.

	2010-11	2011-12	2012-13	2013-14
	Actual	Adopted	Council's	Council's
	Actual	Budget	Budget	Budget

2012-13 Heritage Room

1. No significant changes.

2013-14 Heritage Room

1. No significant changes.

FUNDING SOURCE AND EXPENDITURE DETAIL

LIBRARY FUND

Personnel	5,551,759	5,682,153	5,861,984	5,931,177
Supplies	152,379	177,900	166,800	150,900
Serv. & Charges	1,165,714	1,181,997	1,183,296	1,211,566
Equipment	835,195	805,000	814,500	828,400
Transfers	2,463	0	0	0
Debt	0	0	0	0
Total Library Fund	7,707,510	7,847,050	8,026,580	8,122,043

GENERAL FUND - ADMINISTRATION

Personnel	611,363	609,021	639,433	653,119
Supplies	26,528	30,500	27,400	24,900
Serv. & Charges	45,571	55,078	60,115	61,536
Equipment	0	0	0	0
Transfers	0	0	0	0
Debt	0	0	0	0
Total General Fund - Admin.	683,462	694,599	726,948	739,555

GENERAL FUND - BUILDING & GROUNDS

Personnel	0	0	0	0
Supplies	26,423	32,000	30,000	30,000
Serv. & Charges	865,626	886,939	884,781	894,230
Equipment	0	0	0	0
Transfers	0	0	0	0
Debt	0	0	0	0
Total Gen Fund - Bldg & Grounds	892,049	918,939	914,781	924,230

GENERAL FUND - PUBLIC SERVICE

Personnel	3,924,843	4,016,741	4,164,686	4,200,259
Supplies	46,551	56,400	52,400	39,000
Serv. & Charges	61,224	53,850	43,300	43,300
Equipment	24,488	0	0	0

	2010-11	2011-12	2012-13	2013-14
	<u>Actual</u>	<u>Adopted</u>	<u>Council's</u>	<u>Council's</u>
		<u>Budget</u>	<u>Budget</u>	<u>Budget</u>
Transfers	2,463	0	0	0
Debt	0	0	0	0
Total General Fund -Public Service	4,059,569	4,126,991	4,260,386	4,282,559

GENERAL FUND - SUPPORT SERVICES

Personnel	1,015,553	1,056,391	1,057,865	1,077,799
Supplies	52,877	59,000	57,000	57,000
Serv. & Charges	193,293	186,130	195,100	212,500
Equipment	810,707	805,000	814,500	828,400
Transfers	0	0	0	0
Debt	0	0	0	0
Total General Fund - Support Serv.	2,072,430	2,106,521	2,124,465	2,175,699

LILLIAN POLLEY TRUST FUND

Personnel	81,152	84,576	86,493	87,920
Supplies	0	0	0	0
Serv. & Charges	85	250	250	250
Equipment	9,991	10,000	10,000	10,000
Transfers	0	0	0	0
Debt	0	0	0	0
Total Lillian Polley Trust Fund	91,228	94,826	96,743	98,170

DONATIONS - HERITAGE ROOM

Personnel	41,157	36,128	38,430	39,917
Supplies	0	0	0	0
Serv. & Charges	0	0	0	0
Equipment	0	0	0	0
Transfers	0	0	0	0
Debt	0	0	0	0
Total Donations - Heritage Room	41,157	36,128	38,430	39,917

EQUIPMENT SUMMARY

Library Fund	835,195			
Library Media		805,000	814,500	828,400
Total Equipment - General Fund	835,195	805,000	814,500	828,400
Lillian Polley Trust Fund	9,991			
Library Media		10,000	10,000	10,000
Total Equipment - Lillian Polley Fnd	9,991	10,000	10,000	10,000

	2010-11 <u>Actual</u>	2011-12 <u>Adopted</u> <u>Budget</u>	2012-13 <u>Council's</u> <u>Budget</u>	2013-14 <u>Council's</u> <u>Budget</u>
Total Equipment - All Funds	845,186	815,000	824,500	838,400

LIBRARY PERSONNEL SUMMARY

	Budgeted FTE'S <u>2011-12</u>	Amount Budgeted <u>2011-12</u>	Council's Budgeted FTE'S <u>2012-13</u>	Council's Amount Budgeted <u>2012-13</u>	Council's Budgeted FTE'S <u>2013-14</u>	Council's Amount Budgeted <u>2013-14</u>
LIBRARY FUND						
Administration	6.80	609,021	6.80	639,433	6.80	653,119
Building & Grounds	0.00	0	0.00	0	0.00	0
Public Service	82.54	4,016,741	82.59	4,164,686	81.79	4,200,259
Support Services	16.00	1,056,391	15.45	1,057,865	15.45	1,077,799
TOTAL GENERAL FUND	105.34	5,682,153	104.84	5,861,984	104.04	5,931,177
DONATIONS FUND	0.75	36,128	0.75	38,430	0.75	39,917
LILLIAN POLLEY TRUST FUND	1.00	84,576	1.00	86,493	1.00	87,920
TOTAL ALL FUNDS	107.09	5,802,857	106.59	5,986,907	105.79	6,059,014

POSITION DETAIL

	Position Class Code	FTE's Budgeted <u>2011-12</u>	Amount Budgeted <u>2011-12</u>	Council's FTE's Budgeted <u>2012-13</u>	Council's Amount Budgeted <u>2012-13</u>	Council's Budgeted FTE'S <u>2013-14</u>	Council's Amount Budgeted <u>2013-14</u>
LIBRARY FUND							
Senior Office Assistant	N1032	1.00	39,240	1.00	40,354	1.00	41,113
Office Specialist	N1034	1.00	43,976	1.00	45,233	1.00	46,090
Account Clerk II	N1121	0.80	33,721	0.80	36,613	0.80	37,308
Accountant	A1125	1.00	61,862	1.00	61,862	1.00	61,862
Network Specialist I	A1484	1.00	46,764	1.00	48,346	1.00	49,920
System Specialist III	C1516	2.00	133,169	2.00	133,301	2.00	133,301
Administrative Aide I	A1631	1.00	54,182	1.00	54,182	1.00	54,294
Library Assistant I	N4106	0.75	26,333				
Library Assistant II	N4107	27.13	1,034,742				
Library Assistant III	C4108	24.50	1,005,966				
Libraries Systems Coord	A4109	1.00	67,922	1.00	70,194	1.00	72,453
Librarian I	A4110	5.75	275,940				
Librarian II	A4111	3.00	151,620				
Librarian III	A4112	2.00	135,934				
Library Service Associate	C4114			50.88	2,049,081	50.08	2,037,151
Library Service Supervisor	A4115			5.75	259,590	5.75	262,681

	Position	FTE's	Amount	Council's	Council's	Council's	Council's
	Class	Budgeted	Budgeted	FTE's	Amount	Budgeted	Amount
	Code	2011-12	2011-12	2012-13	2012-13	2013-14	2013-14
Librarian	A4116			8.75	462,763	8.75	477,894
Library Manager	A4117			6.00	364,325	6.00	368,855
Library Coordinator	A4118			3.00	204,394	3.00	205,431
Library Supervisor I	C4120	4.75	215,137				
Library Supervisor III	A4122	5.00	302,771				
Library supervisor IV	A4123	2.00	140,489				
Asst. Library Director	M4130	1.00	98,261	1.00	100,719	1.00	103,442
Director of Libraries	D4132	1.00	94,205	1.00	97,032	1.00	99,942
Entry Level Worker	U4901	16.94	255,642	16.94	255,512	16.94	255,512
Intermediate Level Worker	U4902	2.25	36,972	2.25	36,972	2.25	36,972
Professional/Tech Worker	U4904	0.47	15,046	0.47	14,690	0.47	14,690
Salary Adjustment							
Fringe Benefits			1,412,259		1,526,821		1,572,266
Total Library Fund		105.34	5,682,153	104.84	5,861,984	104.04	5,931,177
DONATIONS FUND - HERITAGE ROOM							
Librarian II	A4111	0.50	27,003				
Librarian	A4116			0.50	28,584	0.50	29,474
Intermediate Level Worker	U4902	0.25	3,770	0.25	3,770	0.25	3,770
Salary Adjustment					410		832
Fringe Benefits			5,355		5,666		5,841
Total Donations Fund		0.75	36,128	0.75	38,430	0.75	39,917
LILLIAN POLLEY TRUST FUND							
Library Manager	A4117		0	1.00	65,384	1.00	65,384
Library Supervisor III	A4122	1.00	65,384				
Salary Adjustment					939		1,877
Fringe Benefits			19,192		20,170		20,659
Total Lillian Polley Trust Fund		1.00	84,576	1.00	86,493	1.00	87,920
TOTAL ALL FUNDS		107.09	5,802,857	106.59	5,986,907	105.79	6,059,014