

USER: sjanso  
DATE: Wednesday, March 17, 2014  
DGN: ...DESIGN\SHEETS\123456.dgn

765+00

766+00

767+00

768+00

769+00

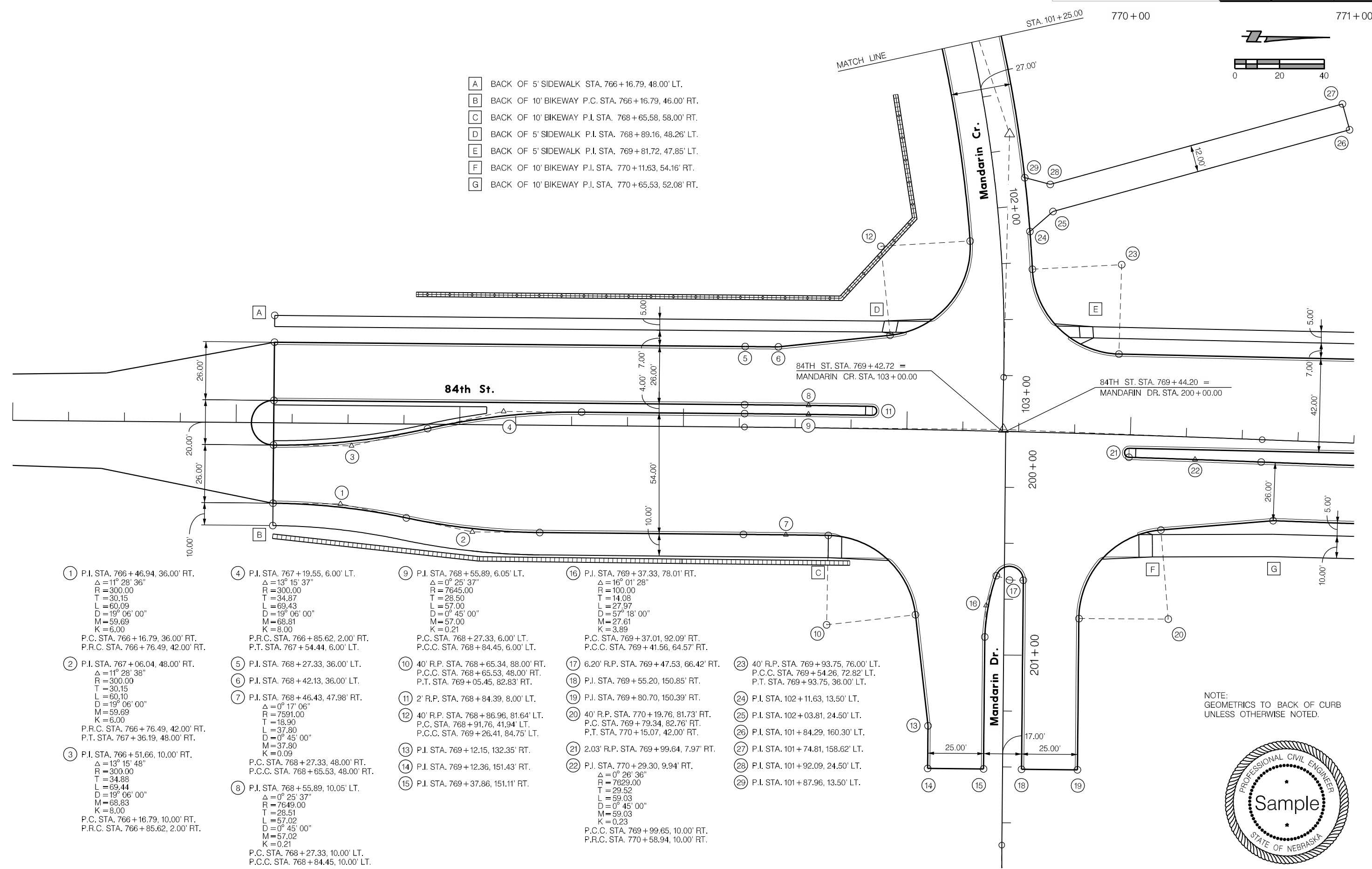
APPROVED LOCATION FOR CONSULTANT LOGO AND PROJ. NO.

CITY PROJECT NO.	700000	SHEET NO.	10
Date:	03-19-04	Drawn:	ABC
Horz. Scale	1 : 40	Checked:	DEF
		Approved:	GHI

CITY OF LINCOLN  
NEBRASKA

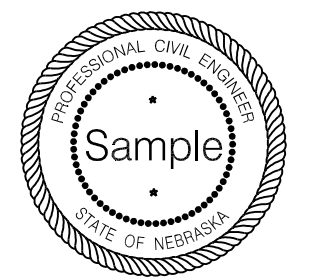
123-4-56

- A BACK OF 5' SIDEWALK STA. 766+16.79, 48.00' LT.
- B BACK OF 10' BIKEWAY P.C. STA. 766+16.79, 46.00' RT.
- C BACK OF 10' BIKEWAY P.I. STA. 768+65.58, 58.00' RT.
- D BACK OF 5' SIDEWALK P.I. STA. 768+89.16, 48.26' LT.
- E BACK OF 5' SIDEWALK P.I. STA. 769+81.72, 47.85' LT.
- F BACK OF 10' BIKEWAY P.I. STA. 770+11.63, 54.16' RT.
- G BACK OF 10' BIKEWAY P.I. STA. 770+65.53, 52.08' RT.



- ① P.I. STA. 766+46.94, 36.00' RT.  
Δ = 11° 28' 36"  
R = 300.00  
T = 30.15  
L = 60.09  
D = 19° 06' 00"  
M = 59.69  
K = 6.00  
P.C. STA. 766+16.79, 36.00' RT.  
P.R.C. STA. 766+76.49, 42.00' RT.
- ② P.I. STA. 767+06.04, 48.00' RT.  
Δ = 11° 28' 38"  
R = 300.00  
T = 30.15  
L = 60.10  
D = 19° 06' 00"  
M = 59.69  
K = 6.00  
P.R.C. STA. 766+76.49, 42.00' RT.  
P.T. STA. 767+36.19, 48.00' RT.
- ③ P.I. STA. 766+51.66, 10.00' RT.  
Δ = 13° 15' 48"  
R = 300.00  
T = 34.88  
L = 69.44  
D = 19° 06' 00"  
M = 68.83  
K = 8.00  
P.C. STA. 766+16.79, 10.00' RT.  
P.R.C. STA. 766+85.62, 2.00' RT.
- ④ P.I. STA. 767+19.55, 6.00' LT.  
Δ = 13° 15' 37"  
R = 300.00  
T = 34.87  
L = 69.43  
D = 19° 06' 00"  
M = 68.81  
K = 8.00  
P.R.C. STA. 766+85.62, 2.00' RT.  
P.T. STA. 767+54.44, 6.00' LT.
- ⑤ P.I. STA. 768+27.33, 36.00' LT.
- ⑥ P.I. STA. 768+42.13, 36.00' LT.
- ⑦ P.I. STA. 768+46.43, 47.98' RT.  
Δ = 0° 17' 06"  
R = 7591.00  
T = 18.90  
L = 37.60  
D = 0° 45' 00"  
M = 37.80  
K = 0.09  
P.C. STA. 768+27.33, 48.00' RT.  
P.C.C. STA. 768+65.53, 48.00' RT.
- ⑧ P.I. STA. 768+55.89, 10.05' LT.  
Δ = 0° 25' 37"  
R = 7649.00  
T = 28.51  
L = 57.02  
D = 0° 45' 00"  
M = 57.02  
K = 0.21  
P.C. STA. 768+27.33, 10.00' LT.  
P.C.C. STA. 768+84.45, 10.00' LT.
- ⑨ P.I. STA. 768+55.89, 6.05' LT.  
Δ = 0° 25' 37"  
R = 7645.00  
T = 28.50  
L = 57.00  
D = 0° 45' 00"  
M = 57.00  
K = 0.21  
P.C. STA. 768+27.33, 6.00' LT.  
P.C.C. STA. 768+84.45, 6.00' LT.
- ⑩ 40' R.P. STA. 768+65.34, 88.00' RT.  
P.C.C. STA. 768+65.53, 48.00' RT.  
P.T. STA. 769+05.45, 82.83' RT.
- ⑪ 2' R.P. STA. 768+84.39, 8.00' LT.
- ⑫ 40' R.P. STA. 768+86.96, 81.64' LT.  
P.C. STA. 768+91.76, 41.94' LT.  
P.C.C. STA. 769+26.41, 84.75' LT.
- ⑬ P.I. STA. 769+12.15, 132.35' RT.
- ⑭ P.I. STA. 769+12.36, 151.43' RT.
- ⑮ P.I. STA. 769+37.86, 151.11' RT.
- ⑯ P.I. STA. 769+37.33, 78.01' RT.  
Δ = 16° 01' 28"  
R = 100.00  
T = 14.08  
L = 27.97  
D = 57° 18' 00"  
M = 27.61  
K = 3.89  
P.C. STA. 769+37.01, 92.09' RT.  
P.C.C. STA. 769+41.56, 64.57' RT.
- ⑰ 6.20' R.P. STA. 769+47.53, 66.42' RT.
- ⑱ P.I. STA. 769+55.20, 150.85' RT.
- ⑲ P.I. STA. 769+80.70, 150.39' RT.
- ⑳ 40' R.P. STA. 770+19.76, 81.73' RT.  
P.C. STA. 769+79.34, 82.76' RT.  
P.T. STA. 770+15.07, 42.00' RT.
- ㉑ 2.03' R.P. STA. 769+99.64, 7.97' RT.
- ㉒ P.I. STA. 770+29.30, 9.94' RT.  
Δ = 0° 26' 36"  
R = 7629.00  
T = 29.52  
L = 59.03  
D = 0° 45' 00"  
M = 59.03  
K = 0.23  
P.C. STA. 769+99.65, 10.00' RT.  
P.R.C. STA. 770+58.94, 10.00' RT.
- ㉓ 40' R.P. STA. 769+93.75, 76.00' LT.  
P.C.C. STA. 769+54.26, 72.82' LT.  
P.T. STA. 769+93.75, 36.00' LT.
- ㉔ P.I. STA. 102+11.63, 13.50' LT.
- ㉕ P.I. STA. 102+03.81, 24.50' LT.
- ㉖ P.I. STA. 101+84.29, 160.30' LT.
- ㉗ P.I. STA. 101+74.81, 158.62' LT.
- ㉘ P.I. STA. 101+92.09, 24.50' LT.
- ㉙ P.I. STA. 101+87.96, 13.50' LT.

NOTE: GEOMETRICS TO BACK OF CURB UNLESS OTHERWISE NOTED.



GEOMETRICS

123-4-56

123-4-56