

766+00

767+00

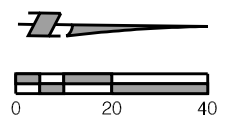
768+00

769+00

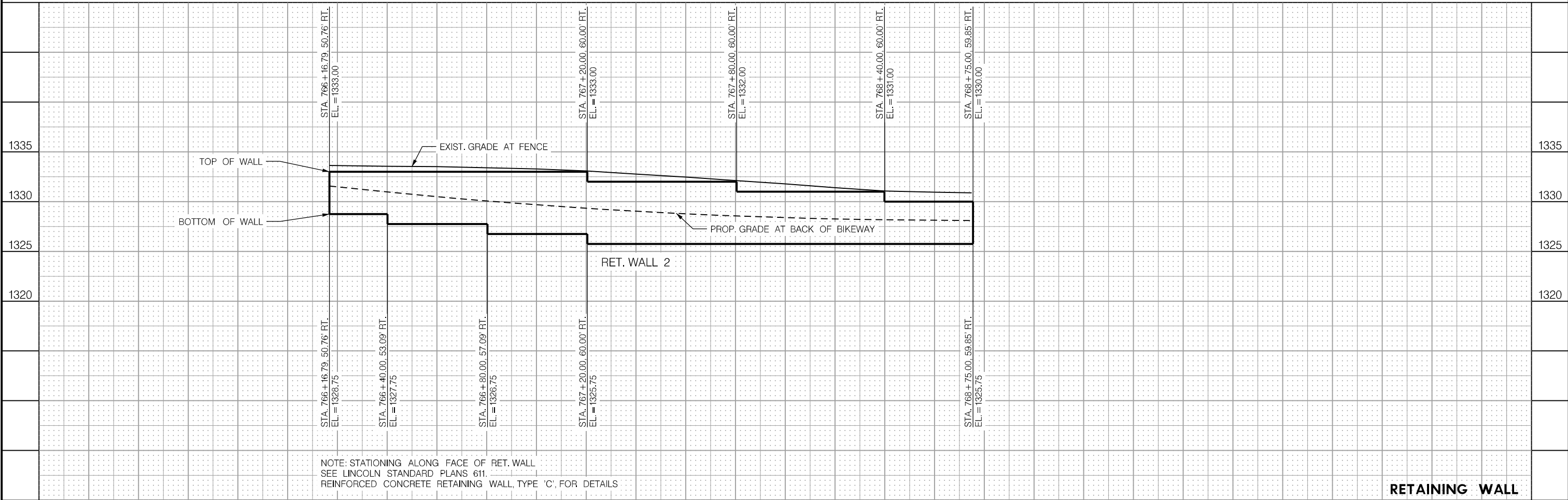
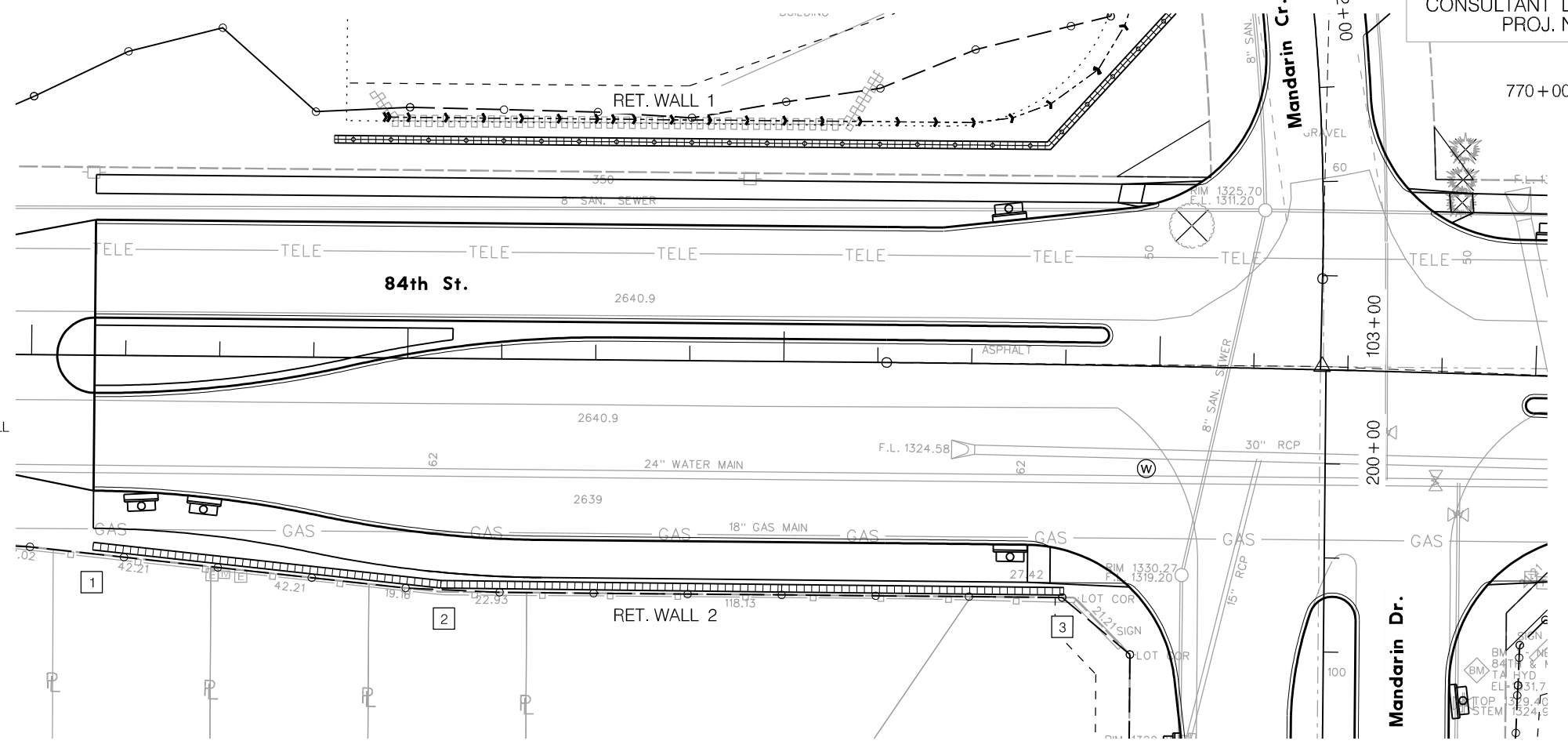
770+00

APPROVED LOCATION FOR
 CONSULTANT LOGO AND
 PROJ. NO.

CITY PROJECT NO.	700000	SHEET NO.	130
Date:	03-19-04	Drawn:	ABC
Horz. Scale	1 : 40	Checked:	DEF
Vert. Scale	1 : 10	Approved:	GHI



- 1 RET. WALL P.O.B. STA. 766+16.79, 50.76' RT.
 - 2 RET. WALL P.I. STA. 767+09.36, 60.00' RT.
 - 3 RET. WALL P.O.E. STA. 768+75.00, 59.85' RT.
- NOTE: GEOMETRICS TO FACE OF RET. WALL



NOTE: STATIONING ALONG FACE OF RET. WALL
 SEE LINCOLN STANDARD PLANS 611.
 REINFORCED CONCRETE RETAINING WALL, TYPE 'C', FOR DETAILS

RETAINING WALL