

**REMOVE AND SALVAGE HYDRANT ASSEMBLY, (COMPLETE)**

NO.	STATION	SIDE	EACH
6	769+62.30	50. 8' LT.	1
7	769+83.20	84. 6' RT.	1

**REMOVE AND SALVAGE VALVE & BOX**

STATION	SIDE	DESCRIPTION
769+60.00	16.5' RT.	1 - 8" GATE VALVE
769+74.40	28.6' RT.	1 - 24" BUTTERFLY VALVE
769+80.40	37.7' RT.	1 - 8" GATE VALVE

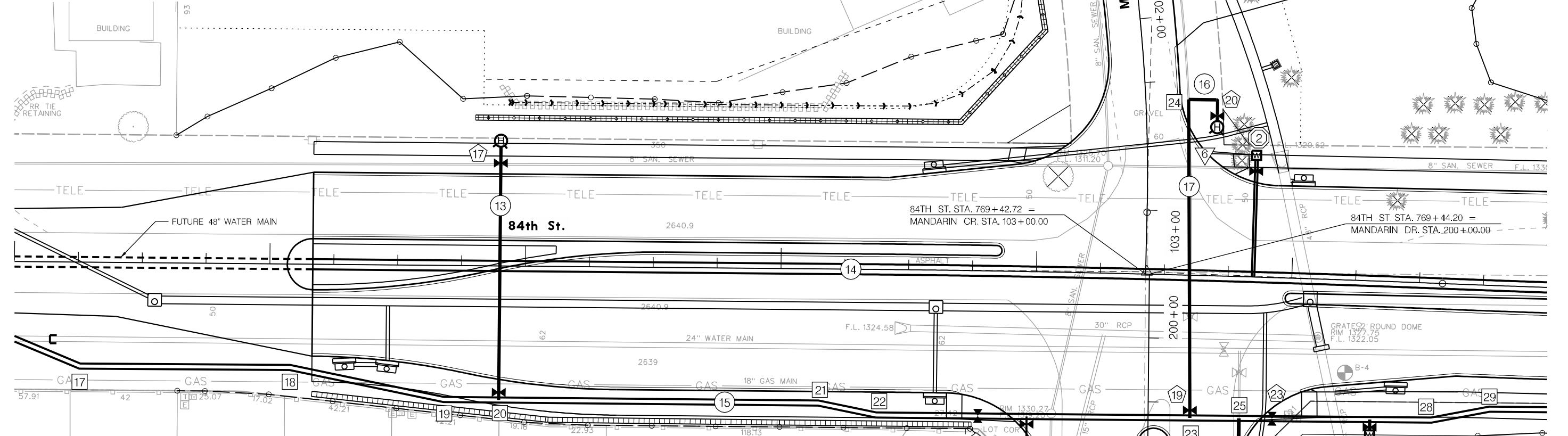
**BUILD D.I. PIPE WATER MAIN CL. 52 W/POLY**

NO.	STATION TO STATION	SIDE	SIZE	LIN. FT.
13	766+90.00	LT. & RT.	6"	99
** 14	766+16.79 - 771+00.00	CL	48"	483
15	765+00.00 - 771+00.00	RT.	24"	605
16	769+58.87 - 769+67.78	LT.	6"	9
17	769+61.50	LT. & RT.	6"	96
18	769+81.12	RT.	8"	49

**REMOVE EXISTING WATER MAIN**

STATION TO STATION	SIZE	LIN. FT.
769+61.32 - LT. & RT.	6"	68
769+80.69 - RT.	8"	44

\*\* NOTE: PRESTRESSED CONCRETE CYLINDER PIPE MAY BE USED IN LIEU OF DUCTILE IRON FOR 48" WATER MAIN.



**BUILD 48" BLOW-OFF VALVE & RISER ASSEMBLY, (COMPLETE)**

NO.	DESCRIPTION
2	STA. 769+84.94 - 46.54' LT. PROP. MANHOLE RIM ELEV. = 1328.73 LAY APPROX. 46 LIN. FT. OF 12" WATER MAIN PIPE SEE DETAIL SHEET NO. DT 2

**BUILD 24" BLOW-OFF VALVE & RISER ASSEMBLY, (COMPLETE)**

NO.	DESCRIPTION
2	STA. 770+32.52 - 58.50' RT. PROP. MANHOLE RIM ELEV. = 1329.56 LAY APPROX. 5 LIN. FT. OF 6" WATER MAIN PIPE SEE DETAIL SHEET NO. DT 2

**BUILD 24" AIR RELIEF VALVE & MANHOLE, (COMPLETE)**

NO.	DESCRIPTION
1	STA. 768+97.20 - 56.68' RT.: INSTALL 2" FLANGE STA. 768+97.20 - 83.89' RT.: PROP. MANHOLE RIM ELEV. = 1328.80 LAY APPROX. 27 LIN. FT. OF 2" WATER MAIN PIPE SEE DETAIL SHEET NO. DT 1

**CAST IRON WATER MAIN FITTINGS, M.J.**

NO.	STATION	SIDE	DESCRIPTION
17	765+25.11	40.50' RT.	1 - 24" X 22.5° BEND, M. J. 1 - 24" X 22.5° R. C. THRUST BLOCK 1 - 24" X 22.5° R. C. THRUST COLLAR
18	766+08.24	40.50' RT.	1 - 24" X 11.25° BEND, M. J. 1 - 24" X 11.25° R. C. THRUST BLOCK
19	766+68.44	52.50' RT.	1 - 24" X 11.25° BEND, M. J. 1 - 24" X 11.25° R. C. THRUST BLOCK
20	766+90.00	52.50' RT.	1 - 24" X 6" TEE, M. J. 1 - 24" R. C. TEE BLOCK
21	768+15.00	52.50' RT.	1 - 24" X 11.25° BEND, M. J. 1 - 24" X 11.25° R. C. THRUST BLOCK
22	768+37.81	57.01' RT.	1 - 24" X 11.25° BEND, M. J. 1 - 24" X 11.25° R. C. THRUST BLOCK
23	769+61.52	55.85' RT.	1 - 24" X 6" TEE, M. J. 1 - 24" R. C. TEE BLOCK
24	769+59.38	40.08' LT.	1 - 6" SOLID SLEEVE, M. J. (L=18")
25	769+80.85	55.44' RT.	1 - 24" X 8" TEE, M. J. 1 - 24" R. C. TEE BLOCK
26	769+81.73	100.20' RT.	1 - 8" X 6" TEE, M. J. 1 - 8" R. C. TEE BLOCK
27	769+81.82	104.30' RT.	1 - 8" SOLID SLEEVE, M. J. (L=12")
28	770+57.17	53.51' RT.	1 - 24" X 11.25° BEND, M. J. 1 - 24" X 11.25° R. C. THRUST BLOCK
29	770+79.11	48.43' RT.	1 - 24" X 11.25° BEND, M. J. 1 - 24" X 11.25° R. C. THRUST BLOCK

**WATER VALVE AND/OR HYDRANT**

NO.	STATION	SIDE	DESCRIPTION
17	766+90.00	47.50' RT.	2 - 6" GATE VALVES, M. J. 1 - HYDRANT, COMPLETE (L=6.5')
18	768+77.74	56.85' RT.	1 - 24" BUTTERFLY VALVE, M. J.
19	769+61.50	52.80' RT.	1 - 6" GATE VALVE, M. J.
20	768+77.74	56.85' RT.	1 - 6" GATE VALVE, M. J. 1 - 6" ANCHORING COUPLING, M. J. (L=18") 1 - 6" ANCHORING ELBOW, M. J. 1 - HYDRANT, COMPLETE (L=6.5')
21	769+85.73	94.15' RT.	1 - 6" GATE VALVE, M. J. 1 - 6" ANCHORING COUPLING, M. J. (L=18") 1 - 6" ANCHORING ELBOW, M. J. 1 - HYDRANT, COMPLETE (L=6.5')
22	769+81.76	103.10' RT.	1 - 8" GATE VALVE, M. J.
23	769+94.00	55.11' RT.	1 - 24" BUTTERFLY VALVE, M. J.



USER: sjanso DATE: Wednesday, March 17, 2004 DGN: ...DESIGN(SHEETS)123456.dgn

123-4-56

123-4-56

123-4-56