

PROJ: SD_SAMPLE.dwg
 USER: S:\Users\jv\My Documents\PROJECTS\SD_SAMPLE.dwg
 DATE: 06/22/2006
 DGN: ...Project01.dgn

APPROVED LOCATION FOR
 CONSULTANT LOGO AND
 PROJ. NO.



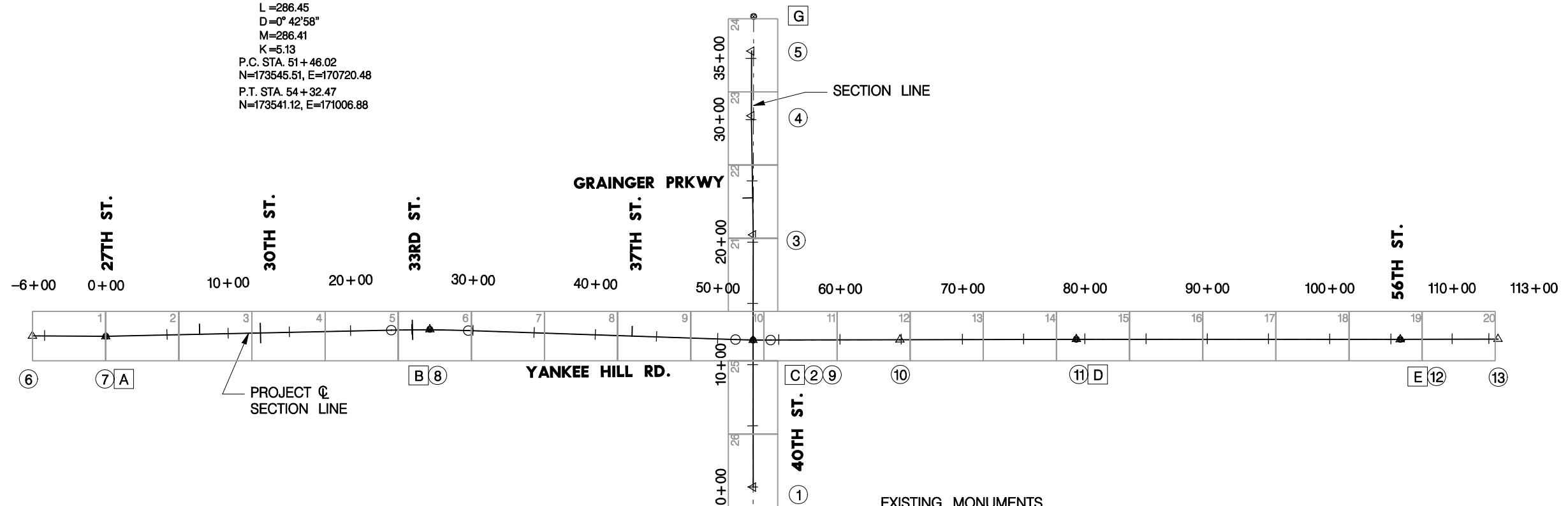
PROJECT NO.	SHEET NO.
SD_SAMPLE	1
Date: GET A DATE	Drawn: ABC
NOT TO SCALE	Checked: DEF
	Approved: GHI

40TH ST.

- ① P.O.B. STA. 0+00.00 - C 40TH ST.
N=172340.76, E=170864.57
- ② P.I. STA. 12+00.00 - C 40TH ST. =
P.I. STA. 52+89.26 - C YANKEE HILL RD.
N=173540.76, E=170863.64
- ③ P.I. STA. 20+59.86 - C 40TH ST.
N=174400.61, E=170865.03
- ④ P.I. STA. 30+31.47 - C 40TH ST.
N=175372.12, E=170850.99
- ⑤ P.O.E. STA. 35+60.09 - C 40TH ST.
N=175900.75, E=170851.30

YANKEE HILL RD.

- ⑥ P.O.B. STA. -6+00.00 - C YANKEE HILL RD.
N=173574.97, E=164976.31
- ⑦ P.I. STA. 0+00.00 - C YANKEE HILL RD.
N=173571.21, E=165576.30
- ⑧ P.I. STA. 26+47.08 - C YANKEE HILL RD.
N=173628.54, E=168222.75
Δ=3° 08'41"
R=11459.06
T=314.55
L=628.94
D=0° 30'00"
M=628.62
K=17.26
P.C. STA. 23+32.53
N=173621.73, E=167908.28
P.T. STA. 29+61.47
N=173618.09, E=168537.13
- ⑨ P.I. STA. 52+89.26 - C YANKEE HILL RD. =
P.I. STA. 12+00.00 - C 40TH ST.
N=173540.76, E=170863.64
Δ=2° 03'06"
R=8000.00
T=143.24
L=286.45
D=0° 42'58"
M=286.41
K=5.13
P.C. STA. 51+46.02
N=173545.51, E=170720.48
P.T. STA. 54+32.47
N=173541.12, E=171006.88
- ⑩ P.I. STA. 64+89.23 - C YANKEE HILL RD.
N=173543.85, E=172063.64
- ⑪ P.I. STA. 79+30.33 - C YANKEE HILL RD.
N=173547.67, E=173504.73
- ⑫ P.I. STA. 105+76.52 - C YANKEE HILL RD. =
P.I. STA. 2+00.00 - 56TH ST.
N=173546.81, E=176150.92
- ⑬ P.O.E. STA. 113+75.75 - C YANKEE HILL RD.
N=173548.87, E=176950.14



BENCHMARKS

- | | | |
|--|---|---|
| 37th & YANKEE HILL RD.
NE CORNER, "X" IN BACK OF CURB,
JUST NORTH OF HYDRANT,
EL = 1278.511 | 40th & YANKEE HILL RD.
SECTION CORNER,
LCSM ALUM CAP,
EL = 1263.936 | 40th & YANKEE HILL RD.
NW CORNER,
"SQUARE" IN CENTER OF HDWL,
EL = 1263.226 |
| 40th & SAN MATEO
BRASS CAP IN
SOUTH ISLAND NOSE,
EL = 1317.279 | 40th & SAN MATEO
368' SOUTH OF SAN MATEO, C 40th ST.
PK NAIL IN ASPHALT,
EL = 1314.196 | 40th & YANKEE HILL RD.
1/4 CORNER, 1/2 M. EAST OF 40th ST.
LCSM ALUM CAP,
EL = 1291.211 |
| 56th & YANKEE HILL RD.
SECTION CORNER,
LCSM ALUM CAP,
EL = 1348.767 | 56TH & BRIDLE LN.
SW RADIUS,
PK NAIL IN ASPHALT,
EL = 1366.604 | 56th & YANKEE HILL RD.
1/4 CORNER, 1/2 M. NORTH OF
YANKEE HILL RD., LCSM ALUM CAP,
EL = 1362.029 |

EXISTING MONUMENTS

- | | | | |
|--|--|--|--|
| A SECTION CORNER
SURVEYED
N=173571.48
E=165576.03 | C SECTION CORNER
LANDBASE
N=173540.76
E=170863.64 | E SECTION CORNER
SURVEYED
N=173546.36
E=176150.90 | G 1/4 CORNER
LANDBASE
N=176182.36
E=170867.93 |
| B 1/4 CORNER
SURVEYED
N=173628.72
E=168222.50 | D 1/4 CORNER
SURVEYED
N=173547.71
E=173504.71 | F 1/4 CORNER
LANDBASE
N=170904.93
E=170865.69 | |

