

Workspace

MicroStation V8i & GEOPAK V8i



CITY OF LINCOLN
N E B R A S K A

City of Lincoln

October, 2011

PUBLIC WORKS & UTILITIES

Working together to provide quality services to our community

Table of Contents

WORKSPACE INSTALLATION.....	1
INTRODUCTION	1
WORKSPACE REQUIREMENTS	1
MINIMUM SYSTEM REQUIREMENTS.....	1
WORKSPACE SETUP	1
MICROSTATION DOWNLOAD.....	1
INTRODUCTION	1
Includes the following:.....	1
USER DOWNLOAD	2
Includes the following:.....	2
PROJECT DOWNLOAD	2
Includes the following:.....	2
GEOPAK DOWNLOAD	2
Includes the following:.....	2
MICROSTATION WORKSPACE.....	3
INTRODUCTION	3
WORKSPACE PROCESS	3
CONFIGURATION FILE LOCATION	3
DESKTOP ICON.....	4
INTRODUCTION	4
SETUP	4
NEW USER.....	5
INTRODUCTION	5
CREATE NEW USER BATCH	5
MODIFICATION	6
CREATE PROJECT	7
INTRODUCTION	7
MODIFICATION	9
STARTING MICROSTATION V8I SS2/GEOPAK V8I SS2	10
INTRODUCTION	10
MICROSTATION MANAGER.....	10
GEOPAK WORKSPACE.....	11
INTRODUCTION	11
<i>Includes the following</i>	<i>11</i>
CRITERIA	11
INTRODUCTION	11
DGN_VARIABLE.X.....	11
CRITERIA.CTL.....	11
SHEET PRODUCTION.....	11
INTRODUCTION	11
LINCOLN.PSL	11
TABLES	11
INTRODUCTION	11

MICROSTATION CONFIGURATION	13
LINCOLN_V8I.CFG – SITE CONFIGURATION.....	13
LINCOLN_V8I.CFG (CONT...)	14
LINCOLN_V8I.CFG (CONT...)	15
LINCOLN_V8I.CFG (CONT...)	16
GEOPAK CONFIGURATION	17
GEOPAK CONFIGURATION	17
PWU_GEOPAK.CFG – APPLICATION CONFIGURATION.....	17
PWU_GEOPAK.CFG (CONT...).....	18
PWU_GEOPAK.CFG (CONT...).....	19
PWU_GEOPAK.CFG (CONT...).....	20
PWU_GEOPAK.CFG (CONT...).....	21
DFLTUSER CONFIGURATION	21
DFLTUSER.CFG - DEFAULT User CONFIGURATION	21
PROJNO CONFIGURATION	22
PROJNO.PCF - PROJECT CONFIGURATION	22
SECTION MANAGER CONFIGURATION.....	23
SECTION_CFGVAR.CFG - APPLICATION CONFIGURATION.....	23
ACS TITLEBLOCK CONFIGURATION.....	23
ACS_SOFTWARE.CFG - APPLICATION CONFIGURATION.....	23

This page left blank intentionally

Workspace Installation

Introduction

This document provides an introduction to the Public Works & Utilities Workspace that has been developed for use with the MicroStation/GEOPAK V8i. The workspace delivers all standard elements such as resource files, cells and level libraries, as well as several custom tools and macros developed by Public Works & Utilities for V8i. Details are provided for both users and administrators.

Workspace Requirements

- Workspace Installation
- MicroStation Download
- MicroStation Workspace
- Desktop Icon
- New User
- Create Project
- Starting MicroStation/GEOPAK
- Workspace Configurations

Minimum System Requirements

The October 2011 release of the CADD Standards has been design to run on the MicroStation **V08.11.07.443** and **GEOPAK Suite V08.05.01.51**. Earlier version of both MicroStation and GEOPAK may experience errors trying to run certain tools and workspaces. Please refer to Bentley documentation for product system requirements.

Please note that this current release of CADD Standards has only been tested in Engineering Services. Though no obvious problems have yet been discovered, we greatly encourage any constructive criticism and input from users.

Workspace Setup

For external consultant users, the Public Works & Utilities Workspace is available for web download. The workspace provides the core functionality of Public Works & Utilities network workspace. Care has been taken to ensure that the installation will not disrupt corporate workspaces if is run as delivered.

<http://www.lincoln.ne.gov/city/pworks/engine/dconst/standard/cadd/#s>

MicroStation Download

Introduction

Download the current MicroStation file and Unzip the file. Make certain to extract the files with **“Use Folder Names”** enabled. This will keep the integrity of the workspace intact. Currently the City of Lincoln runs all of our workspace from a shared server. Depending on your IS department, this should work fine for you as well. Some administration rights maybe needed to complete the installation.

****NOTE****

It is recommended that the Public Works & Utilities Workspace be installed on the network, although installation on the local machine will also work.

Includes the following:

Desktop Icons, Workspace, Interface, Project Configurations, Cells, Dataset, DGNLIB, Macros, MDLAPS, Plot Drivers, Section Manager, Seed Files, Font and Linestyle symbology files, Plot Pentables, VBA and Documentation

****NOTE****

For this document, the example will be loaded to a local drive, however, this can easily be adapted to a server installation.

After unzipping the file, you will find a new directory structure. C:\Resources\... Located at the ..\CityWorkspace_V8i\..., you will find the **Lincoln_V8i.cfg**. This file is our **“SITE”** configuration file and is the pillar of our workspace. You will need to modify this file to mimic your installation. [See 13 Page for additional information.](#)

Next, copy the appropriate ICONS from C:\Resources\... to **C:\Documents and Settings\All Users\Desktop**

For more information and complete installation of the Desktop Icon [See 4 Page.](#)

User Download

Download the current User file and Unzip the file. Make certain to extract the files with “**Use Folder Names**” enabled. This will keep the integrity of the workspace intact. Currently the City of Lincoln runs all of our user workspace from a shared server.

Includes the following:

Batch Command, New User Profile

For more detail information and complete installation [See 5 Page](#) for additional information.

Project Download

Download the current User file and Unzip the file. Make certain to extract the files with “**Use Folder Names**” enabled. This will keep the integrity of the workspace intact.

Includes the following:

Batch Command, Standard Directory Structure, Base Files, Sheet Files, Resource Files, Survey and Water Shed

For more detail information and complete installation [See 7 Page](#) for additional information.

GEOPAK Download

Download the current GEOPAK file and Unzip the file. Make certain to extract the files with “**Use Folder Names**” enabled. This will keep the integrity of the workspace intact.

Includes the following:

Desktop Icons, Criteria, D&C Manager, DTM - Preferences, Labeler, Standard Runs, Sheets Production, SMD, Horizontal and Superelevation Tables

For more detail information and complete installation [See 11 Page](#) for additional information.

MicroStation Workspace

Introduction

Using the Desktop Icon, MicroStation is forced to use workspace configurations located in the .../Resources/CityWorkspace_V8i/... Beginning with the Lincoln_V8i.cfg, the Site level variables are set. Next, the PROJECT.PCF will distinguish Project Standards from Corporate Standards. Finally, the User preferences are set. See *Figure 1* and *Figure 2* below

Workspace Process

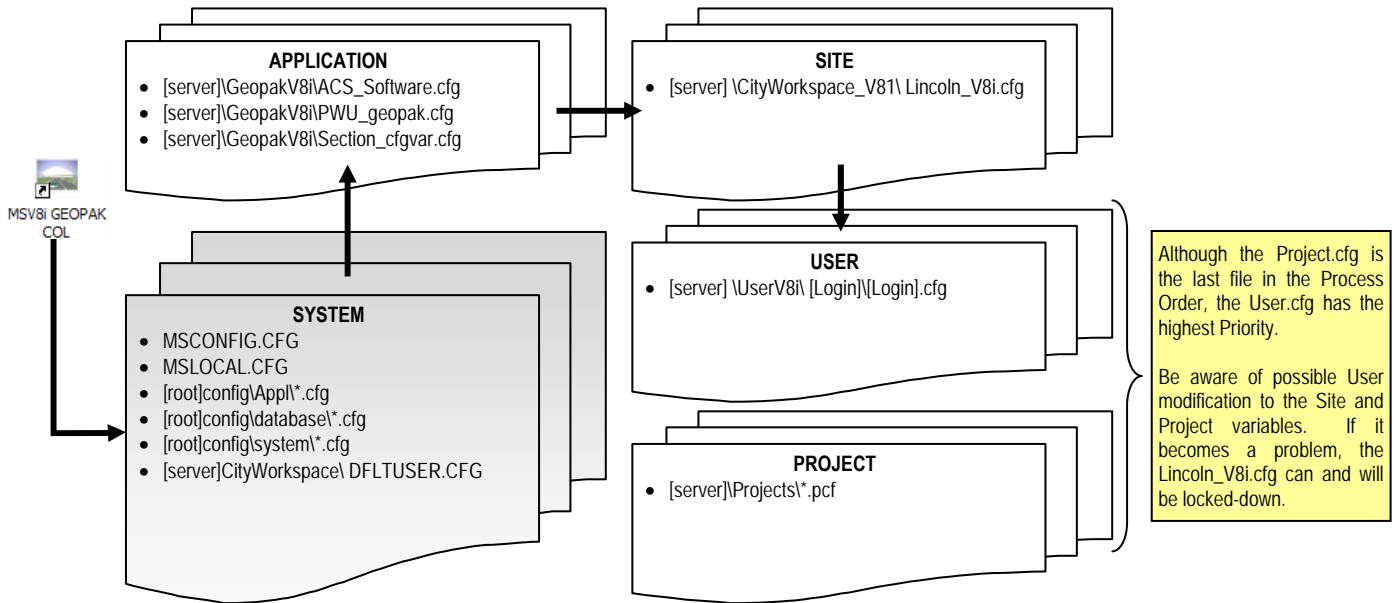


Figure 1

Configuration File Location

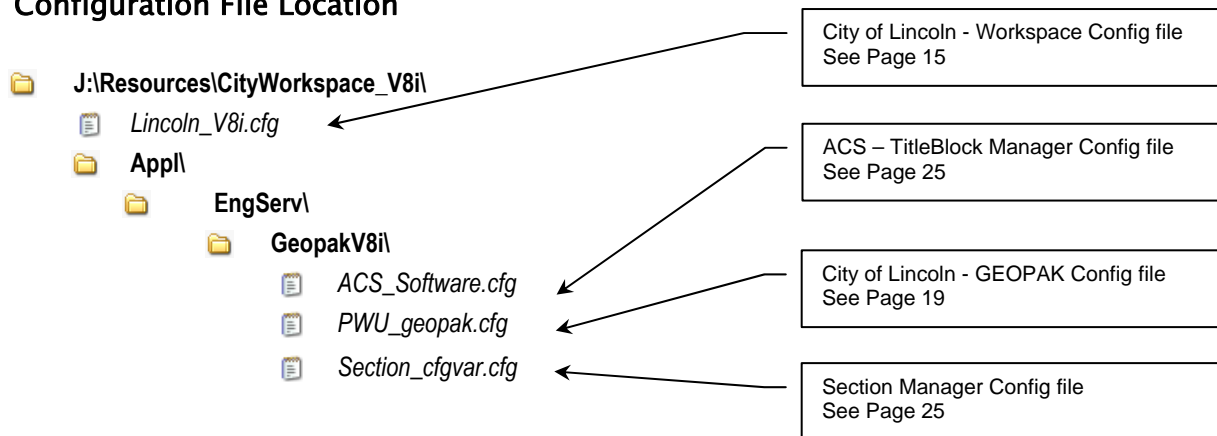


Figure 2

Desktop Icon

Introduction

It is essential to start MicroStation using the supplied desktop icons. Upon proper installation and setup of the workspace, the desktop icon is your direct link to the LPW&U standards. Follow the setup procedure below to make the Icon functional.

Setup

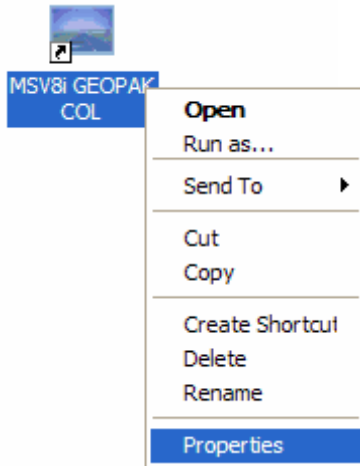


Figure 3

Included with the MicroStation workspace is a desktop icon; COL V8i SS2.ink.

Right-click the shortcut and select **Properties**. See *Figure 3*

When the properties box opens, append the following the text to the Target field (note that it begins with a space): See *Figure 4*

```
"C:\Program Files\Bentley\MicroStation V8i (SELECTseries 1)\MicroStation\ustation.exe" -wsLoad_GEOPAK_SS2=1 -ws_ustn_site=C:\Resources\CityWorkspace_V8i\ -ws_ustn_ecappl=C:\Resources\CityWorkspace_V8i\appl\EngServ\GeopakV8i\
```

-wsLoad_GEOPAK_SS2=1 autoloads GEOPAK

-ws_ustn_site = [path]CityWorkspace_V8i\

-ws_ustn_ecappl = [path]CityWorkspace_V8i\ appl\EngServ\GeopakV8i\

Where [path] defines the full directory path of the Workspace.

Click **OK**.

Next, copy the COL V8i SS2 ICON from C:\Resources\... to C:\Documents and Settings\All Users\Desktop\

You should now have a desktop shortcut that will launch the City of Lincoln Workspace. Users should take care to always load design files for Public Works & Utilities through the shortcut, else the following workspace options will not be available.

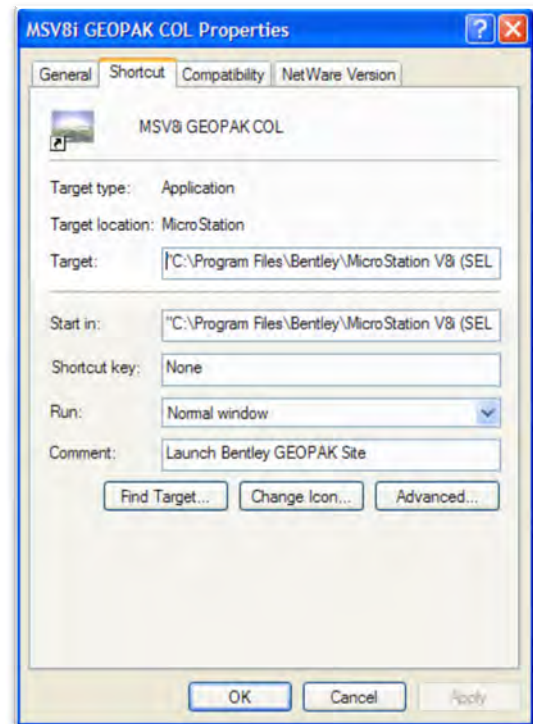


Figure 4

New User

Introduction

Run the **CreateUserV8i.BAT** located *C:\Resources\UserV8i\...* Keyin the new user's Login Id and the batch command will copy and rename the appropriate files to the appropriate location. See *Figure 5*

Create New User Batch

1. Run the "CreateUserV8i.BAT"
2. Keyin the Microsoft User login name of the intended person.

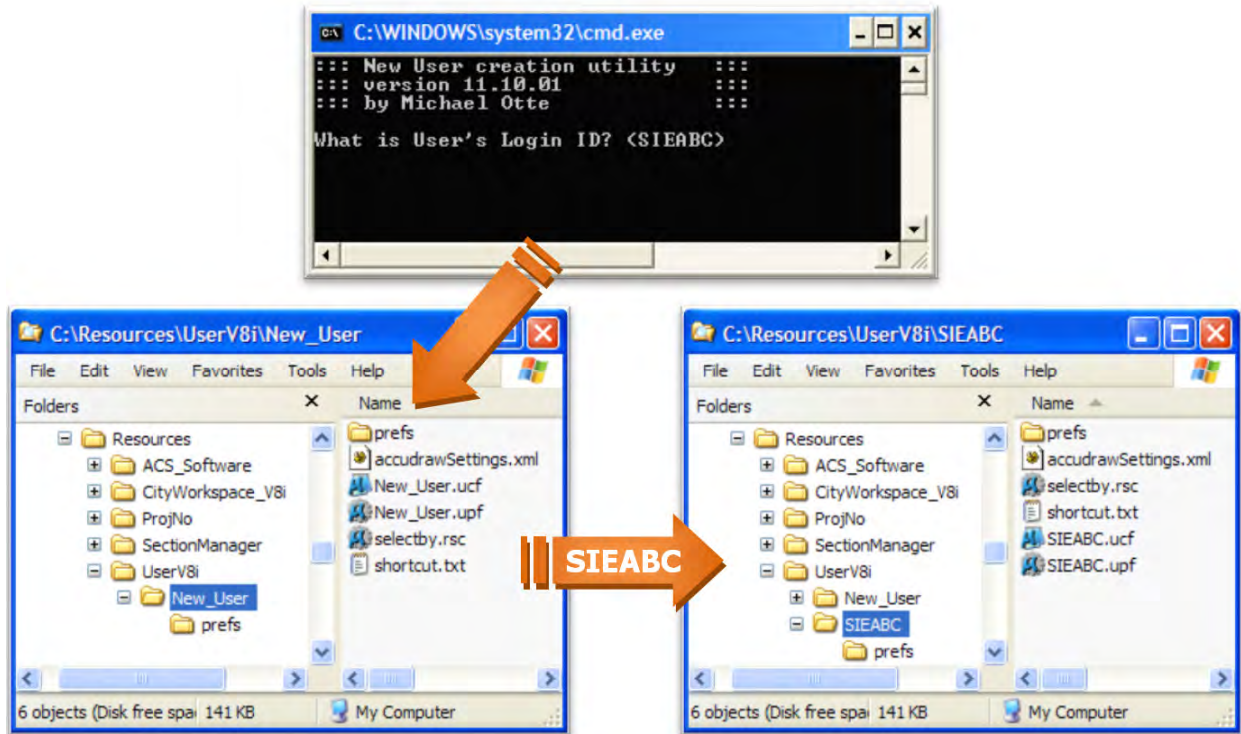


Figure 5

The NewUser batch routine copies and renames the following files to the user's assigned login name:

- NEW_USER.UCF
- NEW_USER.UPF
- AccudrawSettings.xml
- Shortcut.txt
- DFLTUSER.CFG
- New_User.docking.xml
- New_User.untitled.default.GroupPanels.xml
- New_User.untitled.default.TaskNavigation.xml

The **NEW_USER.UCF** file should be left alone and there is no reason to make any modifications. The User UCF file has the highest priority. Because of that, the user does have the opportunity to change and overwrite the Site and Project level variables. If this becomes a problem, the Site and Project configuration files can be locked down.

The User UPF is generated by a user template file, **USER.SPF**. Once the user logs in properly to the server and opens MicroStation, the UPF file will be generated within the user's directory.

If and when the user's UPF becomes corrupt, have the user exist MicroStation, delete their UPF file and restart MicroStation. A new UPF will be generated at this time based on the **USER.SPF**.

Modification

Use a ASCII text editor to make modifications to the **CreateUserV8i.bat** file. What needs to be modified is **Line 09** and **Line 10**. These both describe the location of the User installation. See *Figure 6*

- **Line 09** Set `caduser=\\CEIS\SYS\Resources\UserV8i\` This determines where the installation of the new user will be located.
- **Line 10** Set `template=\\CEIS\SYS\Resources\Userv8i\New_User` This locates the template user, to be copied to each new user.

If the User already exist, the **CreateUser.bat** will end with the following *"THIS USER ALREADY EXISTS!"*

```
1 @echo off
2 echo ::: New User creation utility:::
3 echo ::: version 1.00 :::
4 echo ::: by Michael Otte :::
5 echo.
6
7 REM this section sets up the source and targets
8 :start
9 Set caduser=C:\Resources\UserV8i
10 Set template=C:\Resources\UserV8i\New_User
11
12 SET /P login_id=What is User's Login ID? (SIEABC)
13
14 REM this section checks to see if that job already exists
15
16 if exist login_id\%login_id%.* goto error
17
18 MD %caduser%\%login_id%
19
20 XCOPY %template%\*.* %caduser%\%login_id%\*.* /e
21
22 REM ECHO _USTN_USERNAME = %1>"%caduser%\%login_id%\dfiltuser.cfg"
23
24 RENAME %caduser%\%login_id%\New_User.dir %login_id%.dir
25 RENAME %caduser%\%login_id%\New_User.ucf %login_id%.ucf
26 RENAME %caduser%\%login_id%\New_User.upf %login_id%.upf
27 RENAME %caduser%\%login_id%\prefs\New_User.docking.xml %login_id%.docking.xml
28 RENAME %caduser%\%login_id%\prefs\New_User.untitled.default.GroupPanels.xml
  %login_id%.untitled.default.GroupPanels.xml
29 RENAME %caduser%\%login_id%\prefs\New_User.untitled.default.TaskNavigation.xml
  %login_id%.untitled.default.TaskNavigation.xml
30
31 ECHO Finished.
32 goto DONE
33
34 REM this section returns an error if the user already exists
35 :error
36 echo.
37 echo This User already exists!
38 echo.
```

Figure 6

Create Project

Introduction

Run the CREATEPROJECT.BAT located C:\Temp\Projects\.... Keyin the 6 digit Project Number and the batch command will copy and rename the appropriate files to the appropriate location. See [Figure 7](#)

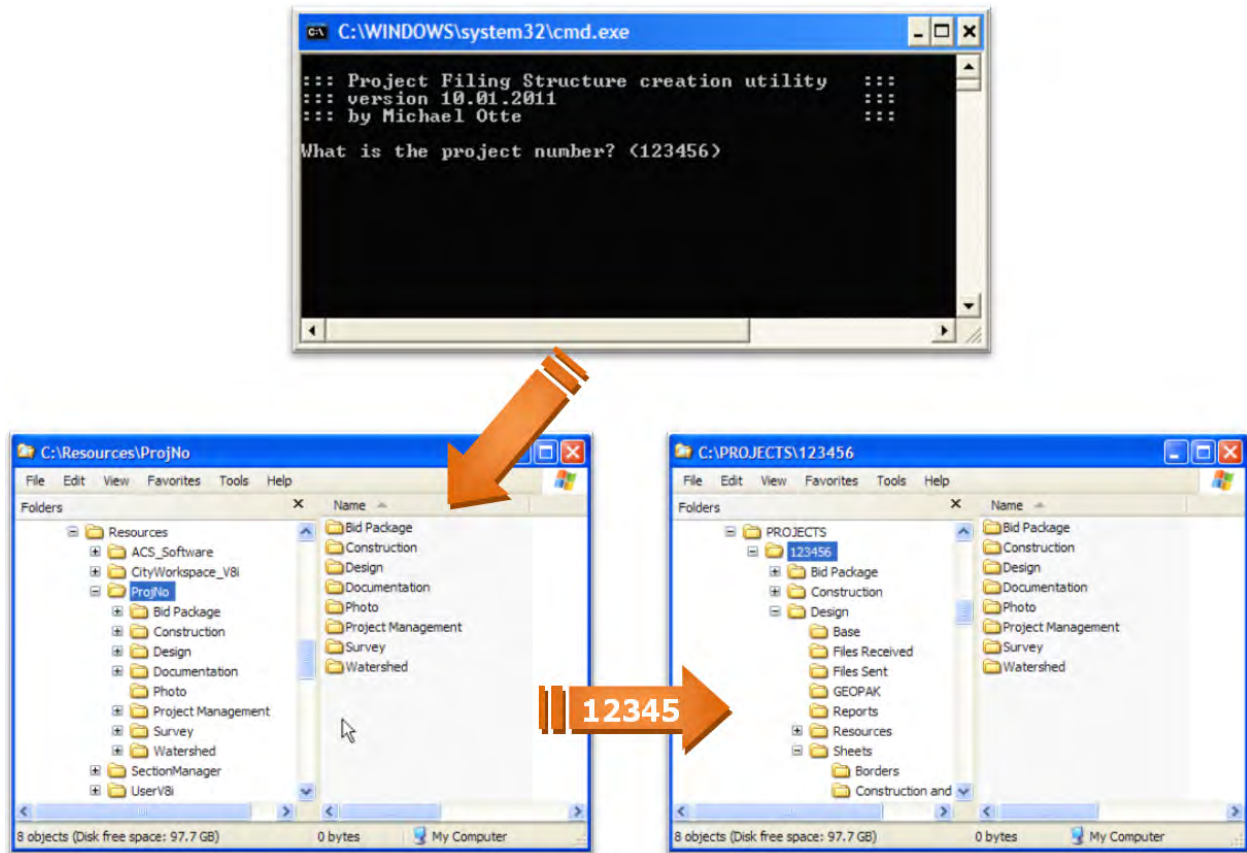


Figure 7

The **CreateProject.bat** routine copies the complete standard directory structure along with all template files. [See 9 Page](#) for additional information. The new root directory is named according to the 6 digit project number. All template files are renamed to include the project number as well. See [Table 1](#) next page

Finally, the MicroStation Project pcf is created for both design and survey standards. [See 22 Page](#) for additional information.

- 123456\
 - Bid Package\
 - Addendums\
 - Bid Results\
 - Revisions\
 - FTP site.doc
 - ImportExport UnitPrice.XLS
 - ProjNo - BidApprovalForm.doc
 - Construction\
 - Complaints\
 - Contract\
 - Final Inspection\
 - Erosion Control\
 - Landscaping\
 - Lighting\
 - Pavement Markings\
 - Signing\
 - Storm-Paving\
 - Traffic Signals\
 - Waste Water\
 - Water\
 - Payment\
 - Design\
 - Base\
 - 123456EB00.DGN
 - 123456ER00.DGN
 - 123456PC00.DGN
 - 123456PD00.DGN
 - 123456PE00.DGN
 - 123456PF00.DGN
 - 123456PG00.DGN
 - 123456PH00.DGN
 - 123456PM00.DGN
 - 15456PP00.DGN
 - 123456PQ00.DGN
 - 123456PR00.DGN
 - 123456PS00.DGN
 - 123456PT00.DGN
 - 123456PW00.DGN
 - 123456PX00.DGN
 - 123456VD00.DGN
 - 123456VH00.DGN
 - 123456VS00.DGN
 - 123456VW00.DGN
 - 123456WK_2D.DGN
 - 123456WK_3D.DGN
 - Files Received\
 - Files Sent\
 - GEOPAK\
 - Reports\
 - Resources\
 - Cell\
 - 123456.cel
- Plot\
 - PlotFiles\
 - PDF Construction.job
 - PDF Erosion.job
 - PDF Geometrics.job
 - PDF Joints.job
 - PDF Misc.job
 - PDF PavtMarking.job
 - PDF Phasing.job
 - PDF Plan&Profile.job
 - PDF ROW.job
 - PDF Storm.job
 - PDF Traffic Signal.job
 - PDF Water.job
 - ProjNo PDF.pset
 - TitleBlock.xls
 - Sheets\
 - Borders\
 - BorderLetter.dgn
 - BorderLetter_f.dgn
 - BorderPGBK.dgn
 - BorderPGBK_f.dgn
 - BorderPlan.dgn
 - BorderPlan_f.dgn
 - BorderPnP.dgn
 - BorderPnP_f.dgn
 - BorderPpGBK.dgn
 - BorderPpGBK_f.dgn
 - BorderXSC.dgn
 - BorderXSC_f.dgn
 - Construction and Removal\
 - Details\
 - General\
 - 123456CO01.dgn
 - 123456GN01.dgn
 - 123456HC01.dgn
 - 123456SQ01.dgn
 - 123456TY01.dgn
 - Geometrics\
 - Joints and Grades\
 - Pavement Markings\
 - Plan&Profile\
 - ROW\
 - Legals\
 - 123456RW00.dgn
 - Sediment and Erosion Control\
 - Storm Drainage\
 - Traffic Signal and Lighting\
 - Waste Water\
 - Water Main\
 - Xsection\
- Documentation\
 - Background\
- Correspondance\
 - Draft Special Provisions
 - Meetings\
 - Permits\
 - Plan Review
 - 1st Submittal\
 - 2nd Submittal\
 - Draft PS&E Submittal
 - PS&E Submittal\
 - Public Involvement\
 - ROW\
 - Photo\
 - Project Management\
 - Budget\
 - Consultant\
 - Contract\
 - Payment\
 - Schedule and Estimate\
 - 2011 ContractItems.XLS
 - GEOPAK2Aurigo_v09292011.xls
 - Survey\
 - Data\
 - GEOPAK\
 - Final\
 - 123456EB00.DGN
 - 123456PTS00.DGN
 - 123456TIN00.DGN
 - Watershed\
 - GIS_CAD\
 - Final\
 - Data\
 - MXD\
 - PDF\
 - Working\
 - Study & Design Documents\
 - Hydraulics\
 - Hydrology\

Modification

Use a ASCII text editor to make modifications to the **CreateProject.bat** file. What needs to be modified is **Line 10, Line 11** and **Line 10**. See *Figure 8*

- **Line 10 Set cadstandards=C:\Resources\CityWorkspace** This describes the location of the Project configuration file. The Batch command will copy the ProjNo.pcf and paste the new project in this location.
- **Line 11 Set template=C:\Resources\ProjNo** This is the location of the LPW&U Project directory template. This also includes MicroStation Base, borders and some sheet files.
- **Line 12 Set projsyd=C:\PROJECTS** This is the location of the new Project. Upon running the **CreateProject.bat**, the files located by **template**, will be copied and renamed to the **projsyd** location.

If the Project already exist, determined by **Line 18**, then the **CreateProject.bat** will end with the following **"THIS PROJECT ALREADY EXISTS!"**.

```
1 @echo off
2 echo.
3 echo ::: Project Filing Structure creation utility      :::
4 echo ::: version 10.01.2011                          :::
5 echo ::: by Michael Otte                             :::
6 echo.
7
8 REM this section sets up the source and targets
9 :start
10 Set cadstandards=C:\Resources\CityWorkspace_V8i\WorkSpace
11 Set template=C:\Resources\ProjNo
12 Set projsyd=C:\PROJECTS
13
14 SET /P proj_number=What is the project number? (123456)
15
16 REM this section checks to see if that job already exists
17
18 if exist %projsyd%\%proj_number%.* goto error
19
20 xcopy %template%\*.* %projsyd%\%proj_number%\*.* /e
21
22 RENAME %projsyd%\%proj_number%\Design\Base\ProjNo*.* %proj_number%*.*
23 RENAME %projsyd%\%proj_number%\Design\Sheets\General\ProjNo*.* %proj_number%*.*
24 RENAME %projsyd%\%proj_number%\Design\Sheets\row\ProjNo*.* %proj_number%*.*
25 RENAME %projsyd%\%proj_number%\Design\Resources\Cell\ProjNo*.* %proj_number%*.*
26 RENAME %projsyd%\%proj_number%\Design\Resources\Plot\ProjNo*.* %proj_number%*.*
27 RENAME %projsyd%\%proj_number%\Survey\GEOPAK\ProjNo*.* %proj_number%*.*
28 RENAME %projsyd%\%proj_number%\Bid Package\ProjNo*.* %proj_number%*.*
29
30 XCOPY "%cadstandards%\Projects\ProjNo*.*" "%cadstandards%\Projects\%proj_number%*.*"
31
32 cd %projsyd%\%proj_number%\
33 del /s delete.txt
34
35 ECHO Finished.
36 goto DONE
37
38 REM this section returns an error if the job already exists
39 :error
40 echo.
41 echo This project already exists!
42 echo.
43
44 Pause
```

Figure 8

Starting MicroStation V8i SS2/Geopak V8i SS2

Introduction

Located on the desktop, there should be one to four MicroStation icons. Depending on additional software needs, GEOPAK may be loaded and will account for the additional icons

Always use the desktop icons to open MicroStation/GEOPAK. Do not double-click on a *.DGN file in the Windows Explorer or the Start>Program>MicroStation icon. Other procedures will not guarantee that the appropriate software and workspaces will load.

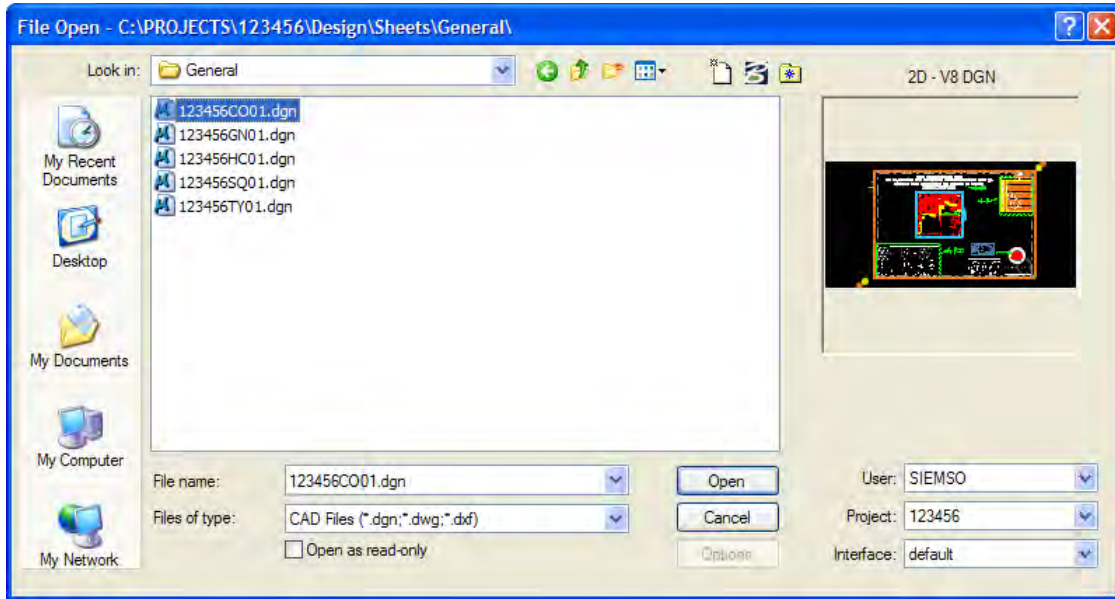


Figure 1

MicroStation Manager

Once the program is activated, the MicroStation Manager dialog will appear. This is the most important part of opening a project. All City of Lincoln Standards, User preferences and Project specifics are organized in the MicroStation Manager. See [Figure 9](#)

Start, set the **User** to your login, which by default should come up automatically. If by some reason this does not appear correctly, refer to the NEWUSER installation. The User workspace saves personal preferences such as location of dialogs, file history, auto saves, etc. For more detail information and complete installation [See 5 Page](#) for additional information.

Next, the **Project** will be a six-digit code that correlates to the appropriate job number. If a particular job number does not appear in the pull-down list, please refer to the NEWPROJECT installation. The Project workspace sets the directories for referencing files; links GEOPAK to the appropriate files, as well as keeps each project independent of each other. For more detail information and complete installation [See 7 Page](#) for additional information.

Finally, the **Interface** should by default be set to Default. All custom applications provided by the City of Lincoln are now build within the Task Navigator. The Task Navigator is controlled through a DGNLIB, therefore the Interface no longer has any influence.

GEOPAK Workspace

Introduction

Download the current GEOPAK file and Unzip the file. Make certain to extract the files with “**Use Folder Names**” enabled. This will keep the integrity of the workspace intact. Currently the City of Lincoln runs all of our workspace from a shared server. Depending on your IS department, this should work fine for you as well. Some administration rights may be needed to complete the installation.

Includes the following

Desktop Icons, Criteria, D&C Manager, DTM - Preferences, Labeler, Standard Runs, Sheets Production, SMD, Horizontal and Superelevation Tables

****NOTE****

For this document, the example will be loaded to a local drive, however, this can easily be adapted to a server installation.

You will find the LPW&U GEOPAK configuration included with the MicroStation download. After unzipping the file, you will find a new directory structure. C:\Resources\... Located \CityWorkspace_V8\app\EngServ\GEOPAK\..., you will find the **PWU_GEOPAK.cfg**. This file is the GEOPAK “**Standard**” configuration file. You will need to modify this file to mimic your installation. [See 17 Page](#) for additional information.

Next, copy the appropriate ICONS from C:\Resources\CityWorkspace_V8\ to **C:\Documents and Settings\All Users\Desktop** [See 4 Page](#) for additional information.

Criteria

Introduction

To correctly use the included criteria, you will need to update **DGN_Variable.x** and **Criteria.CTL**. These files contain hardcode pathing that must match your installation.

DGN_Variable.x

LINE 7 define “~DDB_Path” C:/Resources/CityWorkspace/Geopak/DDB/Lincoln.ddb

Criteria.CTL

Correct all directories. “C:\Resources\CityWorkspace_V8\GeoPak\Criteria\” needs to be updated correctly to you specific installation pathing.

Sheet Production

Introduction

Included with the GEOPAK installation is both the **Lincoln.psl** and **Lincoln.xssl**. These files control sheet productions for both Plan and Cross Section. There are some hard code pathing that will need to be updated to match your installation.

Lincoln.psl

```
LINE 10 CELL_LIBRARY=C:\Resources\CityWorkspace_V8\Standards\cell\Border_V8.cel
LINE 13 REFERENCE_FILE_NAME=C:\Projects\ProjNo\Design\Sheets\Borders\BorderPlan.dgn
LINE 124 CELL_LIBRARY=C:\Resources\CityWorkspace_V8\Standards\cell\Border_V8.cel
LINE 127 REFERENCE_FILE_NAME=C:\Projects\ProjNo\Design\Sheets\Borders\BorderPnP.dgn
LINE 418 CELL_LIBRARY=C:\Resources\CityWorkspace_V8\Standards\cell\Border_V8.cel
LINE 421 REFERENCE_FILE_NAME=C:\Projects\ProjNo\Design\Sheets\Borders\BorderPpGbk.dgn
```

Tables

Introduction

Superelevation Preferences are saved to disk in a file of ASCII format with an extension of **.sep**. Users may edit the file in a text editor, or they may edit it with the Superelevation Preferences Editor. There are some hard code pathing that will need to be updated to match your installation.

```
LINE 2 eTableName = C:\Resources\CityWorkspace_V8\GeoPak\Tables\english_2001_AASHTO_V_e.csv
LINE 10 lengthTableName = C:\Resources\CityWorkspace_V8\GeoPak\Tables\english_2001_eTable_l.csv
```

This page left blank intentionally

MicroStation Configuration

Lincoln_V8i.cfg – Site Configuration

Setup City Standard Resource Locations			
_CITY_DRIVE	= c:/temp/	Drive location of Resources	CHANGE ACCORDINGLY
_CITY_RESRCS	= \$_CITY_DRIVE/Resources/	Location of Resources	DO NOT CHANGE
_CITY_WORKSPACE	= \$_CITY_RESRCS/CityWorkspace/	Location of Workspace	DO NOT CHANGE
_CITY_USER	= \$_CITY_RESRCS/Userv851/	Location of User Preference	DO NOT CHANGE
_CITY_STANDARD	= \$_CITY_WORKSPACE/Standards/	Location of Workspace Standards	DO NOT CHANGE
_CITY_RECORDS	= \$_CITY_DRIVE/records/	Locations of Records	CHANGE ACCORDINGLY
Setup City Standard Workspaces			
#_USTN_WORKSPACEROOT	= \$_CITY_WORKSPACE	Sets Workspaceroo t location	NOT USED
_USTN_APPL	= \$_CITY_WORKSPACE/appl/	Sets Application Config location	DO NOT CHANGE
_USTN_PROJECTSROOT	= \$_CITY_WORKSPACE/projects/	Sets Project Config location	DO NOT CHANGE
#_USTN_SYSTEM	= \$_CITY_WORKSPACE/system/	Sets System location	NOT USED
_AutoTURN	= \$_CITY_RESRCS/Auto TURN 4/	Sets AutoTURN location	CHANGE ACCORDINGLY
Setup User			
%if defined (_winNT)			This may or maynot cause issues with User preferences stored on a server location. These may be CHANGE ACCORDINGLY . There are know performance issues. However, we feel maintenance and support out-weight those
_USTN_USER	= \$_CITY_USER\$(USERNAME)/	Location of User on Server	
MS_USERPREF	= \$_CITY_USER\$(USERNAME)/\$(USERNAME).upf	Location of User's UPF on Server	
MS_FKEYMNU	= \$_CITY_USER\$(USERNAME)/\$(USERNAME).emu	Location of User's FunctionKeyon	
MS_PLTFILES	: \$_CITY_USER\$(USERNAME)	Ouptut Location of Plot Files - NON	
%endif			
Sets Custom ID at 2000			
#_USTN_CUSTOMIZEBASEID	=2000	Structure CustomID Numbers	NOT USED
Create New User Preference File			
MS_USERPREFSEED	= \$_CITY_USER/user.spf	User Preferece Seed	CHANGE ACCORDINGLY
Compress User Preference File			
MS_MONITOR_USER_PREFS	= 1	Helps Stability of UPF	CHANGE ACCORDINGLY
MS_COMPRESS_USER_PREFS	= 1	Compress's Large UPF Files	CHANGE ACCORDINGLY
Delete V7 Unused Levels			
MS_V7TOV8_DELETE_UNUSED_LEVELS	= 1	Delete Unused V7 Levels	DO NOT CHANGE
Disable MS V8 registration			
MS_OTWREG_NOCHECK	= 1	No Registration for installation	DO NOT CHANGE
MS_OTWREG_SENDMETHODOVERRIDE	= 1	No Registration for installation	DO NOT CHANGE
Open V7 Files in V7 Workmode			
MS_OPENV7	= 3	Allows V8 to open and write to V7	DO NOT CHANGE
City Standard Colortable			
MS_DEFCTBL	= \$_CITY_STANDARD/data/colortable.tbl	Standard Colortable	DO NOT CHANGE
Graphics Accelerator			
MS_GRAPHICSACCELERATOR	= QUICKVIS	Sets Graphic Accelerator	DO NOT CHANGE
Disable the use of NON MicroStation Fonts			
_USTN_CAPABILITY	> -CAPABILITY_TEXT_FONTS_TRUETYPE	Disable TrueType Fonts	DO NOT CHANGE
_USTN_CAPABILITY	> -CAPABILITY_TEXT_FONTS_SHX	Disable SHX Fonts	DO NOT CHANGE
_USTN_CAPABILITY	> +CAPABILITY_TEXT_FONTS_RSC	Force MicroStation RSC Fonts	DO NOT CHANGE
The location of the Annotation Scale Definition file			
MS_CUSTOMSCALEDEF	=	Sets Annotation Scale	DO NOT CHANGE

Table 1

Lincoln_V8i.cfg (Cont...)

Allow's use of annotation scale lock toggle.			
#CAPABILITY_MODEL_ANNOTATION_SCALE_LOCK	= 0	Annotation Scale lock toggle	NOT USED
Standard Cell location and list			
MS_CELL	= \$(_CITY_STANDARD)Cell/	Search path(s) for cell libraries.	DO NOT CHANGE
MS_CELLOUT	= \$(_CITY_STANDARD)Cell/	Directory for new cell libraries	DO NOT CHANGE
MS_CELLLIST	= \$(_CITY_STANDARD)Cell/*.cel	List of Cell Libraries	DO NOT CHANGE
MS_CELLSELECTORDIR	= \$(_CITY_STANDARD)Cell/	Directory for Cell Selector (.csf) files.	DO NOT CHANGE
Standard DATA location			
MS_DATA	= \$(_CITY_STANDARD)Data/	Directory for data files used by MS	DO NOT CHANGE
Standard Default directory w hen Project NOT assigned			
MS_DEF	: C:/Temp/	Search path(s) for DGN files.	CHANGE ACCORDINGLY
Standard Pentable Location			
MS_PENTABLE	= \$(_CITY_STANDARD)tables/Pen/	Search path for pen table files.	DO NOT CHANGE
Standard Seed file Location and File			
MS_SEEDFILES	= \$(_CITY_STANDARD)Seed/	Search path(s) for all seed files.	DO NOT CHANGE
MS_DESIGNSEED	= city2d.dgn	Default seed file.	DO NOT CHANGE
MS_TRANSEED	= city3d.dgn	Default seed file for DWG translations.	DO NOT CHANGE
Standard City Plot Driver			
MS_PLTR	= \$(_CITY_STANDARD)Plotdrv/Konica_03.plt	Name of printer driver file.	CHANGE ACCORDINGLY
MS_PLOTDLG_DEF_PLTFILE	= \$(_CITY_STANDARD)Plotdrv/Konica_03.plt	Printer that reloads after each use	CHANGE ACCORDINGLY
Standard MDL Server location			
MS_MDL	> \$(_CITY_STANDARD)mdl/sys/	Location for MDL applications for MS	DO NOT CHANGE
Standard MDLAPPS Sever Location			
MS_MDLAPPS	> \$(_CITY_STANDARD)Mdlapps/	Location for MDL applications	DO NOT CHANGE
MS_MDLAPPS	> \$(_AutoTURN)	displayed in the MDL dialog box.	CHANGE ACCORDINGLY
Standard Resource Files			
MS_SYMBRSRC	= \$(_CITY_STANDARD)Symb/*.rsc	List of symbology resource files	DO NOT CHANGE
Standard Macro Server Location			
MS_MACRO	= \$(_CITY_STANDARD)Macros/	Search path for macros	DO NOT CHANGE
Standard VBA Server Location			
MS_VBASEARCHDIRECTORIES	= \$(_CITY_STANDARD)VBA/	Location of VBA project.	DO NOT CHANGE
Standard Pentable Date Format			
#MS_PENTABLE_DATE_FORMAT	= %A, %B %d, %Y	Sets the Date and Time format	NOT USED
Standard place note extend option			
MS_PLACE_NOTE_EXTENDEDOPTIONS	= 1		DO NOT CHANGE
Standard Dictionary Location			
MS_SPELLINGUSERDICTIONARY		Location of Dictionary	= \$(_CITY_STANDARD)data/
This Loads the Daily Tip Program			
# MS_DGNAPPS	< DAILYTIP	Loads MDL Dailytip	NOT USED
# MS_DAILYTIFFILE	= \$(_CITY_STANDARD)VBA/dailytip.txt	Text file needed for Dailytip	NOT USED

Table 2

Lincoln_V8i.cfg (Cont...)

This Loads the Cell and Text Utilities Programs			
MS_DGNAPPS	> <i>textutil</i>	Loads MDL Textutil	DO NOT CHANGE
MS_DGNAPPS	> <i>cellwiz</i>	Loads MDL Cellwiz	DO NOT CHANGE
MS_DGNAPPS	> <i>celltool</i>	Loads MDL Celltool	DO NOT CHANGE
MS_DGNAPPS	> <i>sscloud</i>	Loads MDL Sscloud	DO NOT CHANGE
MS_DGNAPPS	> <i>adrstv8</i>	Loads MDL Adrstv8	DO NOT CHANGE
MS_DGNAPPS	> <i>WildConfig</i>	Loads MDL WildConfig	DO NOT CHANGE
MS_DGNAPPS	> <i>synchbylevel</i>	Loads MDL Synchbylevel	DO NOT CHANGE
#MS_DGNAPPS	> <i>Infosnap</i>	Loads MDL Infosnap	NOT USED
This Loads the ATOOL Program			
BSI_ATOOL	= <i>\$(_CITY_STANDARD)Mdlapps/ATOOL.RSC</i>	Location of ATOOL resource file	DO NOT CHANGE
These control the DGNLIB			
MS_LEVEL_LIB_DIR	= <i>\$(_CITY_STANDARD)dgnlib/</i>	Location of DGNLIB	DO NOT CHANGE
MS_DGNLIBLIST	: <i>\$(_CITY_STANDARD)dgnlib/*.dgnlib</i>	List of DGN libraries.	DO NOT CHANGE
MS_LEVEL_AUTO_SYNC_ATTRIBUTE_LIST	=	Automatically synchronize level	DO NOT CHANGE
MS_REF_REATTACH_LEVEL_SYNC_ATTRIBUTE_LIST	= <i>ByLevelSymbology,ByLevelColor,ByLevelStyle,ByLevelWeight,plot</i>	Sync's level attributes reference is	DO NOT CHANGE
MS_LEVEL_EDIT_ATTRIBUTE_LIST	= <i>ByLevelSColor</i>	Resync Level Symbology after keyin	DO NOT CHANGE
MS_REF_NEWLEVELDISPLAY	= 1	Displays new levels in references	DO NOT CHANGE
MS_FILTER_LIB_DIR	= <i>\$(_CITY_STANDARD)dgnlib/</i>	Directory containing filter data files.	DO NOT CHANGE
MS_HIDE_LIBRARY_SOURCE_NAMES	= 1		DO NOT CHANGE
MS_OPENDESIGNFILEFILTER	: *.DGN	File filter for MicroStation Manager	DO NOT CHANGE
MS_DESIGNFILTER	: *.DGN	File filter for MicroStation Manager	DO NOT CHANGE
This Loads the DGNLIB macro			
#MS_DGNAPPS	< <i>runmacro</i>	Starts the RUNMACRO mdl app.	NOT USED
#MS_DGNMACROS	> <i>DGNLIB</i>	Macro to synch DGNLIB	NOT USED
Runs startup routine			
MS_DGNAPPS	> <i>runmacro</i>	Starts the RUNMACRO mdl app.	DO NOT CHANGE
MS_DGNMACROS	= <i>startup.bas</i>	Control's the Start of every file	DO NOT CHANGE
Standard License Server Location			
MS_USERLICENSE	: <i>\$(_CITY_WORKSPACE)Licensing/msv8.lic</i>	MicroStation License	CHANGE ACCORDINGLY
Standard Web browser			
MS_USEEXTERNALBROWSER	= <i>IExplore</i>	Sets Internet Explorer as default	CHANGE ACCORDINGLY
This Loads the OneCall Program			
MS_VBAAUTOLOADPROJECTS	= <i>\$(_CITY_STANDARD)vba/showl.mvba</i>	Auto Loads VBA Showl	DO NOT CHANGE
MS_VBAAUTOLOADPROJECTS	> <i>\$(_CITY_STANDARD)vba/halo.mvba</i>	Auto Loads VBA Halo	DO NOT CHANGE
This is for running the custom apps like filescan dgs OneCall			
MS_DGNAPPS	> <i>sectionman</i>	Starts the SECTIONMAN mdl app.	DO NOT CHANGE
SECTIONMAN_DATA	= <i>\$(MS_MDLAPPS)intelnt/sectionman.ini</i>	Location of the resource file	DO NOT CHANGE
SECTIONMAN_EXTRACT_LIST_DIR	= <i>\$(_CITY_STANDARD)SectionExtractor/</i>	Location of Sectionman Extract	DO NOT CHANGE
This sets Adobe Reader and the Section Manager Help File			
%if Exist (C:/Program Files/Adobe/Acrobat 7.0/Reader/AcroRd32.exe)		This is used to determine what version of Adobe Reader is loaded, in order to open the Section Manager Help file	DO NOT CHANGE
%PW_AdobeReader	= <i>C:/Program Files/Adobe/Acrobat</i>		DO NOT CHANGE
%elif Exist (C:/Program Files/Adobe/Acrobat 6.0/Reader/AcroRd32.exe)			DO NOT CHANGE
%PW_AdobeReader	= <i>C:/Program Files/Adobe/Acrobat</i>		DO NOT CHANGE
%elif Exist (C:/Program Files/Adobe/Acrobat 5.0/Reader/AcroRd32.exe)			DO NOT CHANGE
%PW_AdobeReader	= <i>C:/Program Files/Adobe/Acrobat</i>		DO NOT CHANGE
%endif			DO NOT CHANGE
PW_SectionMan	=	The location of the Section	DO NOT CHANGE

Table 3

Lincoln_V8i.cfg (Cont...)

Section is for setting up a corporate interface file			
_USTN_USERINTROOT	= \$(_CITY_WORKSPACE)interfaces/	Defines the user interface root directory	DO NOT CHANGE
_USTN_UIPATH	= \$(_CITY_WORKSPACE)interfaces/microstation/	Location for user interface resources	DO NOT CHANGE
_USTN_UISTANDARDS	=	Location for user interface resources	DO NOT CHANGE
_USTN_USERINTNAME	= Lincoln	Sets the default interface	DO NOT CHANGE
Set Full Path in Title Bar			
MS_FULLPATHINTITLEBAR	= 1	File info displayed in MS Title Bar	DO NOT CHANGE
Sets IdleTimeout			
MS_IDLETIMEOUT	= 30	Exists MS when inactive (30 mins.)	CHANGE ACCORDINGLY
Set Spelling Language			
MS_SPELLINGLANGUAGE	= AmericanEnglish	Specifies the language	DO NOT CHANGE
Disables Save Full Path - Reference			
MS_DISALLOWFULLREFPATH	= 1	NO save the full path to references	DO NOT CHANGE
Set New Level Display ON - Reference			
MS_REF_NEWLEV/ELDISPLAY	= 1	Displays new levels in references	DO NOT CHANGE
Preserves Plot Scale - Plot			
MS_PLT_ENABLE_PRESERVE_SCALE	= 1	Preserve the current plot scale	DO NOT CHANGE
MS_PLT_MAX_ON_NEW_AREA	= 1	Print size is maximized automatically	DO NOT CHANGE
Reset Plot Dialog upon close - Plot			
MS_PLTDLG_UNLOADONCLOSE	= 1	Plot dialog box on closing.	DO NOT CHANGE
Force Coincident World - Reference			
MS_REF_COINCIDENTWORLD	= 1	Ref. attachment to Coincident-World	DO NOT CHANGE
HTML Author			
MS_HTMLDGNDIR	= \$(_CITY_STANDARD)data/	Location of cell images for HTML docs	DO NOT CHANGE
Testing			
MKA_VBA_IMAGES	= \$(_CITY_STANDARD)Images/	For use with Autorun.ba, Prefs.mvba	DO NOT CHANGE
#MS_MAINMENU DOCKING BESIDE	= 1	Dock next the the MENU	NOT USED

Table 4

GEOPAK Configuration

PWU_GEOPAK.cfg – Application Configuration

GEOPAK ENVIRONMENT VARIABLES		
_City_GEOPAK	= C:/Resources/CityWorkspace_V8i/GeoPak/	CHANGE ACCORDINGLY
MS_VBSEARCHDIRECTORIES	> \$(_City_GEOPAK)VBA Routines/	DO NOT CHANGE
START GEOPAK @ MS START		
# GPK_NOAUTOACTIVATE	=1	NOT USED
# GPK_STARTUP_CONFIG	=1	NOT USED
# GPK_STARTUP_CONFIG_SUITE	=1	NOT USED
# GPK_STARTUP_CONFIG_SITE	=1	NOT USED
# GPK_STARTUP_CONFIG_SURVEY	=1	NOT USED
# GPK_STARTUP_CONFIG_BRIDGE	=1	NOT USED
# GPK_STARTUP_CONFIG_REBAR	=1	NOT USED
# GPK_STARTUP_CONFIG_CIVILEXT	=0	NOT USED
DISPLAY VERSION NUMBER AT STARTUP		
GPK_SPLASH_VERSION	=1	DO NOT CHANGE
Project Wise		
# GPK_PROJECTWISE_MESSAGECENTER	UNDEFINED	NOT USED
# GPK_PROJECTWISE_CREATION_EXCLUDED_EXTENSIONS	UNDEFINED	NOT USED
# GPK_PROJECTWISE_CREATION_INCLUDED_EXTENSIONS	UNDEFINED	NOT USED
# GPK_AUTOPWJOBDIR	UNDEFINED	NOT USED
PROJECT MANAGER		
# GPK_PROJMgr_PROJECTDIR	UNDEFINED	NOT USED
# GPK_PRJXS_CRITERIADIR	UNDEFINED	NOT USED
DEFAULT DATABASES		
GPK_ACBOOK_DDBFILE	= C:/Resources/CityWorkspace_V8i/GeoPak/DDB/COLV8i.ddb # 2-08-06 - 8.8 Only	CHANGE ACCORDINGLY
GPK_SURVMGR_SMDFILE	= C:/Resources/CityWorkspace_V8i/GeoPak/SM D/Lincoln.smd # 04-2+05 Full Path with new install	CHANGE ACCORDINGLY
GPK_ACBOOK_DDBFILE_STYLES	= C:/Resources/CityWorkspace_V8i/GeoPak/DDB/COL-V8i_Sections.ddb # 2-08-06 - 8.8 Only	CHANGE ACCORDINGLY
# GPK_COGOPREF_PDBFILE	UNDEFINED	NOT USED
# GPK_TABLES_RTRFILE	UNDEFINED	NOT USED
# GPK_ENGMET_TXTFILE	UNDEFINED	NOT USED
# GPK_LDEDIT_LDBFILE	UNDEFINED	NOT USED
CM Templates *.ITL		
GPK_RD_TEMPLATE_LIBRARY	= C:\Resources\CityWorkspace_V8i\GeoPak\Templates\COL.itl	CHANGE ACCORDINGLY
D&C Computational Units		
GPK_COMPUTATION_ENGLISH_UNIT_DEF_FILE	=C:/Resources/CityWorkspace_V8i/GeoPak/Tables/ComputationUnitDefinitionEnglish.csv	DO NOT CHANGE
# GPK_COMPUTATION_METRIC_UNIT_DEF_FILE	UNDEFINED	NOT USED
CRITERIA		
# GPK_CRITSYNT_IFTHENELSEFILE	UNDEFINED	NOT USED
# GPK_CRITSYNT_BASICDRWFILE	UNDEFINED	NOT USED
# GPK_CRITSYNT_DRWTRACEFILE	UNDEFINED	NOT USED
# GPK_CRITSYNT_SLOPEFILE	UNDEFINED	NOT USED
# GPK_CRITSYNT_LENGTHQFILE	UNDEFINED	NOT USED
# GPK_CRITSYNT_DRAWTOFILE	UNDEFINED	NOT USED
# GPK_CRITSYNT_DRAWTEXTFILE	UNDEFINED	NOT USED
# GPK_CRITSYNT_INTRVARBFILE	UNDEFINED	NOT USED
# GPK_CRITSYNT_SUBSTRNGFILE	UNDEFINED	NOT USED
# GPK_MY_CRITERIADIR	UNDEFINED	NOT USED
GPK_DC_3PCDIR	\$(_City_GEOPAK)Criteria/3pc/	DO NOT CHANGE

Table 5

PWU_GEOPAK.cfg (Cont...)

PM TYPICAL SECTION SELECTOR		
GPK_TYPICAL	: \$(_City_GEOPAK)Criteria/	DO NOT CHANGE
GPK_TYPICAL_EDITOR	< C:/Program Files/Windows NT/Accessories/wordpad.exe	CHANGE ACCORDINGLY
# GPK_TYPICAL_HELPFILE_EXTENSION	UNDEFINED	NOT USED
XS CELL		
# MAX_XS_CELL_WIDTH	UNDEFINED	NOT USED
DEFAULT COGO EDITOR		
# GPK_EDITOR	UNDEFINED	NOT USED
LABELING		
GPK_LABELER_PLANSTYLEFILE	= \$(_City_GEOPAK)Labeler/Lincoln_pln.lsf	DO NOT CHANGE
# GPK_LABELER_PLANINSFILE	UNDEFINED	NOT USED
# GPK_LABELER_XSSTYLEFILE	UNDEFINED	NOT USED
# GPK_LABELER_XSDRGINSEFILE	UNDEFINED	NOT USED
# GPK_LABELER_DRGSTYLEFILE	UNDEFINED	NOT USED
GPK_LABELER_XSINSFILE	= \$(_City_GEOPAK)Labeler/Lincoln_XS.lsf	DO NOT CHANGE
# GPK_LABELER_PROFSTYLEFILE	UNDEFINED	NOT USED
# GPK_LABELER_SITESTYLEFILE	UNDEFINED	NOT USED
# GPK_LABELER_WATSEWSTYLEFILE	UNDEFINED	NOT USED
DRAINAGE		
# GPK_DRGPREF_DEFDRLIB	UNDEFINED	NOT USED
# GPK_DRGPREF_DEFCELLLIB	UNDEFINED	NOT USED
# GPK_DRGPREF_DEFPREFDIR	UNDEFINED	NOT USED
WATER & SEWER PREFERENCE		
# GPK_GWSPREF_FILENAME	UNDEFINED	NOT USED
SITE		
GPKSITE_POINTTOLERANCE	= 0	DO NOT CHANGE
GPKSITE_COMPRESS_FILE	= 1	DO NOT CHANGE
BEARING READOUT		
GPKLABEL_NOBLANKS_BEARINGS	= 1	DO NOT CHANGE
GPKLABEL_NODUE_BEARINGS	= 1	DO NOT CHANGE
COORD. STORING OPTION TOGGLE		
GPK_SURVMNGR_STORETOGPKTOGGLE	= 1	DO NOT CHANGE
LCODE After PCODE		
GPK_SURVEY_LINKINGCODEAFTERFEAT	= 1	DO NOT CHANGE
Survey Seed Preference File 02/16/05		
GPK_SURVEY_SEED_SDPFILE	\$(_City_GEOPAK)Survey/	DO NOT CHANGE
Survey Seed DGN File 02/16/05		
# GPK_SURVEY_SEED_DGNFILE	UNDEFINED	NOT USED
Misc. Survey Variables 02/16/05		
# GPK_SURVEY_CHAINFORCENOGAPS	UNDEFINED	NOT USED
# GPK_SURVEY_LINKINGCODEAFTERFEAT	UNDEFINED	NOT USED
# GPK_SURVEY_DISABLEGEODOUTPUT	UNDEFINED	NOT USED
# GPK_SURVEY_SCANGPKFORORPHANRUNS	UNDEFINED	NOT USED
# GPK_SURVMNGR_USE_SHARED_CELLS	UNDEFINED	NOT USED

Table 6

PWU_GEOPAK.cfg (Cont...)

External OBS Converter		
# GPK_SURVEY_EXTERNALOBSPARAMS	UNDEFINED	NOT USED
converter params		
# %o = Full path to obs file (path only)		
or appended to		
# %m = Base name of obs file no extension		
# %p = Full path to raw file (path only)		
# %f = Full file path and extension of raw		
# %n = Base name of raw file no extension		
# %w = 0 for Overwrite, 1 for Append		
PLAN & PROFILE SHEET LAYOUT (2001-)		
# GPK_PLPRCLIP_DATFILE	UNDEFINED	NOT USED
PLAN & PROFILE SHEET LAYOUT (2001+)		
GPK_SHEETCLP_SHEET_CELL_LIBRARY_DIR	> \${_CITY_WORKSPACE}Workspace/Standards/Cell/	DO NOT CHANGE
GPK_SHEETCLP_SHEET_LIBRARY_NAME	= LINCOLN.PSL	DO NOT CHANGE
GPK_SHEETCLP_SHEET_LIBRARY_DIR	= \${_CITY_GEOPAK}Sheets/	DO NOT CHANGE
# GPK_SHEETCLP_SHEET_OUTPUT_DIR	UNDEFINED	NOT USED
# GPK_SHEETCLP_PLAN_MOTIF_FILE_DIR	UNDEFINED	NOT USED
# GPK_SHEETCLP_PROFILE_MOTIF_FILE_DIR	UNDEFINED	NOT USED
# GPK_SHEETCLP_TABULAR_DATA_MOTIF_FILE_DIR	UNDEFINED	NOT USED
# GPK_SHEETCLP_SEED_PLAN_MOTIF_FILE_NAME	UNDEFINED	NOT USED
# GPK_SHEETCLP_SEED_PLAN_MOTIF_FILE_DIR	UNDEFINED	NOT USED
# GPK_SHEETCLP_SEED_PROFILE_MOTIF_FILE_NAME	UNDEFINED	NOT USED
# GPK_SHEETCLP_SEED_PROFILE_MOTIF_FILE_DIR	UNDEFINED	NOT USED
# GPK_SHEETCLP_SEED_TABULAR_DATA_MOTIF_FILE_NAME	UNDEFINED	NOT USED
# GPK_SHEETCLP_SEED_TABULAR_DATA_MOTIF_FILE_DIR	UNDEFINED	NOT USED
DTM CALCS.		
# GPK_DTM_VALIDATE_POLYGONAL_FEATURES	UNDEFINED	NOT USED
SUPERELEVATION		
GPK_SUPER_PREFDIR	= \${_CITY_GEOPAK}Tables/	DO NOT CHANGE
GPK_SUPER_EDIR	= \${_CITY_GEOPAK}Tables/	DO NOT CHANGE
GPK_SUPER_LENGTHDIR	= \${_CITY_GEOPAK}Tables/	DO NOT CHANGE
# GPK_SUPER_AUTOSHAPENPUTDIR	UNDEFINED	NOT USED
# GPK_SUPER_EDITOR	UNDEFINED	NOT USED
SSD COMPS. (2001 AASHTO)		
GPK_PROFILE_COMPUTATION	= AASHTO2001	DO NOT CHANGE
GEOTECHNICAL PREFERENCE		
# GPK_BOREHOLE_GTPFILE	UNDEFINED	NOT USED
# GPK_GEOTECH_FILETYPE	UNDEFINED	NOT USED

Table 7

PWU_GEOPAK.cfg (Cont...)

FORCE VARIABLES		
Not all GEOPAK variables have a FORCE variable.		
#GPK_FORCE_ALLCFGVARS = 1	UNDEFINED	NOT USED
# GPK_FORCE_PROJMgr_PROJECTDIR	UNDEFINED	NOT USED
#GPK_FORCE_ACBOOK_DDBFILE = 1	UNDEFINED	NOT USED
# GPK_FORCE_SURVMNGR_SMDFILE	UNDEFINED	NOT USED
# GPK_FORCE_PLPRCLIP_DATFILE	UNDEFINED	NOT USED
# GPK_FORCE_COGOPREF_PDBFILE	UNDEFINED	NOT USED
# GPK_FORCE_TABLES_RTRFILE	UNDEFINED	NOT USED
# GPK_FORCE_ENGMET_TXTFILE	UNDEFINED	NOT USED
# GPK_FORCE_PRJXS_CRITERIADIR	UNDEFINED	NOT USED
# GPK_FORCE_CRITSYNT_IFTHENELSEFILE	UNDEFINED	NOT USED
# GPK_FORCE_CRITSYNT_BASICDRWFILE	UNDEFINED	NOT USED
# GPK_FORCE_CRITSYNT_DRWTRACEFILE	UNDEFINED	NOT USED
# GPK_FORCE_CRITSYNT_SLOPEFILE	UNDEFINED	NOT USED
# GPK_FORCE_CRITSYNT_LENGTHQFILE	UNDEFINED	NOT USED
# GPK_FORCE_CRITSYNT_DRAWTOFILE	UNDEFINED	NOT USED
# GPK_FORCE_CRITSYNT_DRAWTEXTFILE	UNDEFINED	NOT USED
# GPK_FORCE_CRITSYNT_INTRVARBFILE	UNDEFINED	NOT USED
# GPK_FORCE_CRITSYNT_SUBSTRNGFILE	UNDEFINED	NOT USED
# GPK_FORCE_LABELER_DRGSTYLEFILE	UNDEFINED	NOT USED
# GPK_FORCE_LABELER_PLANSTYLEFILE	UNDEFINED	NOT USED
# GPK_FORCE_LABELER_XSSTYLEFILE	UNDEFINED	NOT USED
# GPK_FORCE_LABELER_PROFSTYLEFILE	UNDEFINED	NOT USED
# GPK_FORCE_LABELER_SITESTYLEFILE	UNDEFINED	NOT USED
# GPK_FORCE_SHEETCLP_SHEET_LIBRARY_NAME	UNDEFINED	NOT USED
# GPK_FORCE_SHEETCLP_SHEET_LIBRARY_DIR	UNDEFINED	NOT USED
# GPK_FORCE_SHEETCLP_SHEET_OUTPUT_DIR	UNDEFINED	NOT USED
# GPK_FORCE_SHEETCLP_SHEET_CELL_LIBRARY_DIR	UNDEFINED	NOT USED
# GPK_FORCE_SHEETCLP_PLAN_MOTIF_FILE_DIR	UNDEFINED	NOT USED
# GPK_FORCE_SHEETCLP_PROFILE_MOTIF_FILE_DIR	UNDEFINED	NOT USED
# GPK_FORCE_SHEETCLP_TABULAR_DATA_MOTIF_FILE_DIR	UNDEFINED	NOT USED
# GPK_FORCE_SHEETCLP_SEED_PLAN_MOTIF_FILE_NAME	UNDEFINED	NOT USED
# GPK_FORCE_SHEETCLP_SEED_PLAN_MOTIF_FILE_DIR	UNDEFINED	NOT USED
# GPK_FORCE_SHEETCLP_SEED_PROFILE_MOTIF_FILE_NAME	UNDEFINED	NOT USED
# GPK_FORCE_SHEETCLP_SEED_PROFILE_MOTIF_FILE_DIR	UNDEFINED	NOT USED
# GPK_FORCE_SHEETCLP_SEED_TABULAR_DATA_MOTIF_FILE_NAME	UNDEFINED	NOT USED
# GPK_FORCE_SHEETCLP_SEED_TABULAR_DATA_MOTIF_FILE_DIR	UNDEFINED	NOT USED
TDOT Data Collector Var.		
# TDOT_SA2TRV_DIR	UNDEFINED	NOT USED
MnDOT Void Calc. Var.		
# GPK_DTM_MNDOT_VOID_VALIDATE	UNDEFINED	NOT USED
Horizontal Alignment Generator		
GPK_HA_SYMMETRICAL_THREE_CENTERED_CURVE_TABLE	=\${_City_GEOPAK}Tables/HA_3CenteredCurve_Symmetrical_200%english.tbl	DO NOT CHANGE
GPK_HA_ASYMMETRICAL_THREE_CENTERED_CURVE_TABLE	=\${_City_GEOPAK}Tables/HA_3CenteredCurve_Asymmetrical_200%english.tbl	DO NOT CHANGE
GPK_HA_SYMMETRICAL_TAPERED_CURVE_TABLE	UNDEFINED	NOT USED
GPK_HA_ASYMMETRICAL_TAPERED_CURVE_TABLE	UNDEFINED	NOT USED
GPK_HA_SPIRAL_DESIGN_TABLE	UNDEFINED	NOT USED
GPK_HA_TURNING_PATH_DESIGN_VEHICLE_TABLE	UNDEFINED	NOT USED
Vertical Alignment Generator		
GPK_PROFILE_CURVATURE_TABLE	=\${_City_GEOPAK}Tables/LINCOLN-KValues_E.kvl	DO NOT CHANGE

Table 8

PWU_GEOPAK.cfg (Cont...)

MXS Sheet Layout		
GPK_XS_SHEET_LIBRARY_DIR	=\${_City_GEOPAK}Sheets/	DO NOT CHANGE
GPK_XS_SHEET_LIBRARY_NAME	=Lincoln.xssl	DO NOT CHANGE
Level Validation Engine		
# GPK_LEVEL_CREATE_NEW	=0	DO NOT CHANGE
# GPK_LEVEL_DEFAULT	UNDEFINED	DO NOT CHANGE
# GPK_LEVEL_WARNING	=1	DO NOT CHANGE
COGO Performance		
GPK_ENABLEBURSTLOCKING	=1	DO NOT CHANGE
GPK_BURSTLOCKINGTIMEOUT	=1800	DO NOT CHANGE
Miscellaneous		
# MS_V7_LEVEL_NAME_PREFIX	UNDEFINED	NOT USED
# MS_DWGSAVEAPPLICATIONDATA	=1	NOT USED
# MS_BATCHCONVERT_COPYEXT	=sht;pfl	NOT USED
# MS_UNITS_SHOWALL	=1	NOT USED
# MS_OPENV7	=3	NOT USED
# MS_FILEHISTORY	=1	NOT USED
# _USTN_CAPABILITY	=+CAPABILITY_LEVELS_CREATE	NOT USED
Cross Section Cell Level - 8.8 Only		
GPK_LEVEL_XS_CELL = PX:Cell	=PX:Cell	DO NOT CHANGE
Set Level Symbology to ByLevel - 8.8 Only		
GPK_LEVEL_PROFILE_CELL	=VH:Cell	DO NOT CHANGE
Profile Cell Level - 8.8 Only		
GPK_LEVEL_SET_BYLEVELS	=1	DO NOT CHANGE
Display GEOPAK Attributes w/in AccuSnap - 8.8 Only		
Y	=1	DO NOT CHANGE
The following line is to enable Task navigation in Microstation		
MS_DGNLIBLIST		DO NOT CHANGE

Table 9

DFLTUSER Configuration

dfltuser.cfg – Default User Configuration

DEFAULT USER			
%if exists (\${_CITY_USER}\${USERPATH})/\${(USERNAME)}.UCF)		Checks for UCF on Server	DO NOT CHANGE
_USTN_USERNAME	=\${(USERNAME)}	if found, sets Login Username	DO NOT CHANGE
%else _USTN_USERNAME	=DEFAULT	if no Login Username, set to default	DO NOT CHANGE
%endif			DO NOT CHANGE
_USTN_USERNAME	=\${(USERNAME)}	if no server connection	DO NOT CHANGE

Table 10

ProjNo Configuration

ProjNo.pcf – Project Configuration

Set Project Name and Description		
_USTN_PROJECTDESCR	= \$(basename (_USTN_PROJECTNAME))	DO NOT CHANGE
Set search paths		
Project	= C:/Projects/\${_USTN_PROJECTDESCR}/	CHANGE ACCORDINGLY
Design	= \$(Project)Design/	DO NOT CHANGE
Survey	= \$(Project)Survey/	DO NOT CHANGE
Geopak	= \$(Design)Geopak/	DO NOT CHANGE
Resources	= \$(Design)Resources/	DO NOT CHANGE
Plot	= \$(Resources)Plot/	DO NOT CHANGE
Records	= C:/records/	CHANGE ACCORDINGLY
Set Project Text Substitution		
PU_PROJECT	= \$_USTN_PROJECTDESCR	DO NOT CHANGE
PU_NUMBER	= Need A Number	CHANGE ACCORDINGLY
Print_Date	= GET A DATE	CHANGE ACCORDINGLY
PU_SUBMITTAL	= SUBMITTAL	CHANGE ACCORDINGLY
Set Project Default and Reference Directories		
MS_DEF	= \$(Design)	DO NOT CHANGE
MS_RFDIR	= \$(Design)*.**	DO NOT CHANGE
MS_RFDIR	> \$(Survey)*.**	DO NOT CHANGE
MS_RFDIR	> \$(Records)*.**	DO NOT CHANGE
Set Project Cell Library		
MS_CELL	< \$(Resources)CELL/	DO NOT CHANGE
MS_CELLLIST	< \$(Resources)CELL/*.cel	DO NOT CHANGE
Set Project Pentable and Output Directory		
MS_PLTFILES	= \$(Plot)plotfiles/	DO NOT CHANGE
MS_PRINTDEF_PATH	= \$(Plot)	DO NOT CHANGE
Set Project BatchPlot		
#MS_BATCHPLT_SPECS	= \$(Plot)batchplt.spc	DO NOT CHANGE
MS_BATCHPLT_DEF	= \$(Plot)	DO NOT CHANGE
MS_BATCHPLT_JOBSET_DIR	= \$(Plot)	DO NOT CHANGE
GEOPAK config variables		
GPK_FORCE_ALLCFGVARS	= 1	DO NOT CHANGE
GPK_PROJMGR_PROJECTDIR	= \$(Geopak)	DO NOT CHANGE

Table 11

Section Manager Configuration

section_cfgvar.cfg – Application Configuration

#This is for loading City limits file		
PW_Section_Dir	= C:/Resources/SectionManager/Standards/	CHANGE ACCORDINGLY
MS_MACRO	> \$(PW_Section_Dir)macros/	DO NOT CHANGE
MS_VBAAUTOLOADPROJECTS	> \$(PW_Section_Dir)vba/show.mvba	DO NOT CHANGE
#This is for running the custom apps like filescan dgs OneCall		
MS_MDL	> \$(PW_Section_Dir)mdlapps/intelnt/	DO NOT CHANGE
MS_DGNAPPS	> sectionman	DO NOT CHANGE
SECTIONMAN_DATA	= C:/Resources/SectionManager/Standards/mdlapps/intelnt/sectionman.ini	DO NOT CHANGE
SECTIONMAN_EXTRACT_LIST_DIR	= \$(PW_Section_Dir)SectionExtractor/	CHANGE ACCORDINGLY
MS_GUIDGNLIBLIST	> \$(PW_Section_Dir)guidgnlib/sectionman.dgnlib	DO NOT CHANGE

Table 13

ACS TitleBlock Configuration

ACS_Software.cfg – Application Configuration

Load ACS Software Configuration files		
To complete the installation, copy this configuration file ACS_Software.cfg to the application folder in MicroStation. The default location would be: C:\Program Files\Bentley\Program\MicroStation\config\appl		
%if !defined(_BENTLEYREDLINE) && !defined(_PRJREVIEW) && !defined(_BENTLEYVIEW)		DO NOT CHANGE
Set ACS_TBM_MAIN_DIR to where ACS_Software directory is located on the server		
load ACS TitleBlock Manager if found in path		
ACS_TBM_MAIN_DIR	=C:/Resources/ACS_Software/TitleBlockManager_V3/	CHANGE ACCORDINGLY
%if exists \$(ACS_TBM_MAIN_DIR)TitleBlockManager.cfg)	Checks if the TitleBlockManager is available	DO NOT CHANGE
%include \$(ACS_TBM_MAIN_DIR)TitleBlockManager.cfg	If so, then include variables	DO NOT CHANGE
%endif		DO NOT CHANGE
load ACS MenuManager if found in path		
_ACSMN_MAIN_DIR	=C:/Program Files/ACS_Software/MenuManager/	DO NOT CHANGE
%if exists \$(_ACSMN_MAIN_DIR)MenuManager.cfg)	Checks if the MenuManager is available	DO NOT CHANGE
%include \$(_ACSMN_MAIN_DIR)MenuManager.cfg	If so, then include variables	DO NOT CHANGE
%endif		DO NOT CHANGE
		DO NOT CHANGE
%endif		DO NOT CHANGE

Table 14