



LINCOLN
Parks and Recreation

MEMORANDUM

DATE: July 29, 2024

TO: City of Lincoln Parks and Recreation Department, Lower Platte South Natural Resources District Board of Directors, Nebraska Game and Parks Commission, and Nebraska Chapter Pheasants Forever, Inc.

FROM: Tom Malmstrom
Park Planner II - Parks and Recreation Department
Saline Wetlands Conservation Partnership

RE: Saline Wetlands Conservation Partnership – 2023 Progress Report

On behalf of the Saline Wetlands Conservation Partnership (SWCP) I want to make you aware of the activities which occurred in 2023. The SWCP was initiated in 2003 and continues efforts to conserve Nebraska's eastern saline wetlands. Efforts of the SWCP are to protect, restore, and manage the rare and unique saline wetland habitat. *Nebraska's Eastern Saline Wetlands Conservation Plan (2018)* provides conservation guidance for continued efforts to conserve saline wetlands. This plan along with other resources and partnership efforts are available on the city web site here: <https://www.lincoln.ne.gov/City/Departments/Parks-and-Recreation/Parks-Facilities/Saline-Wetlands>

Since its inception, approximately 2,107 acres of habitat containing saline wetlands, freshwater wetlands, native prairie, and other associated upland habitat have been conserved through fee-title acquisition from willing sellers. Activities continue with education, saline wetland restoration and conservation projects, and the operation and maintenance of conservation areas.

Illustration 1 identifies saline wetland properties, which have been acquired through fee-title acquisitions from willing sellers since the 1980's.

Illustration 1

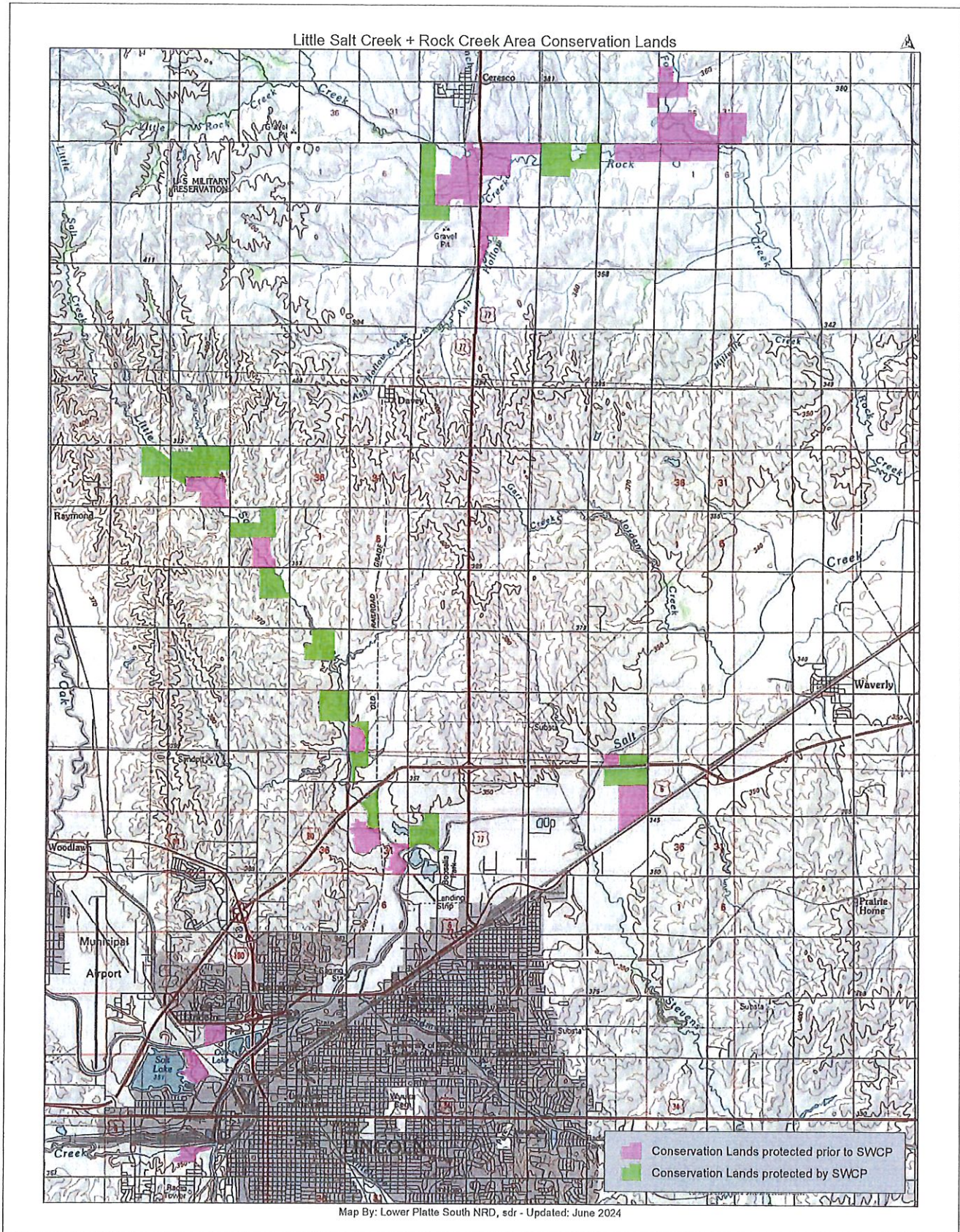
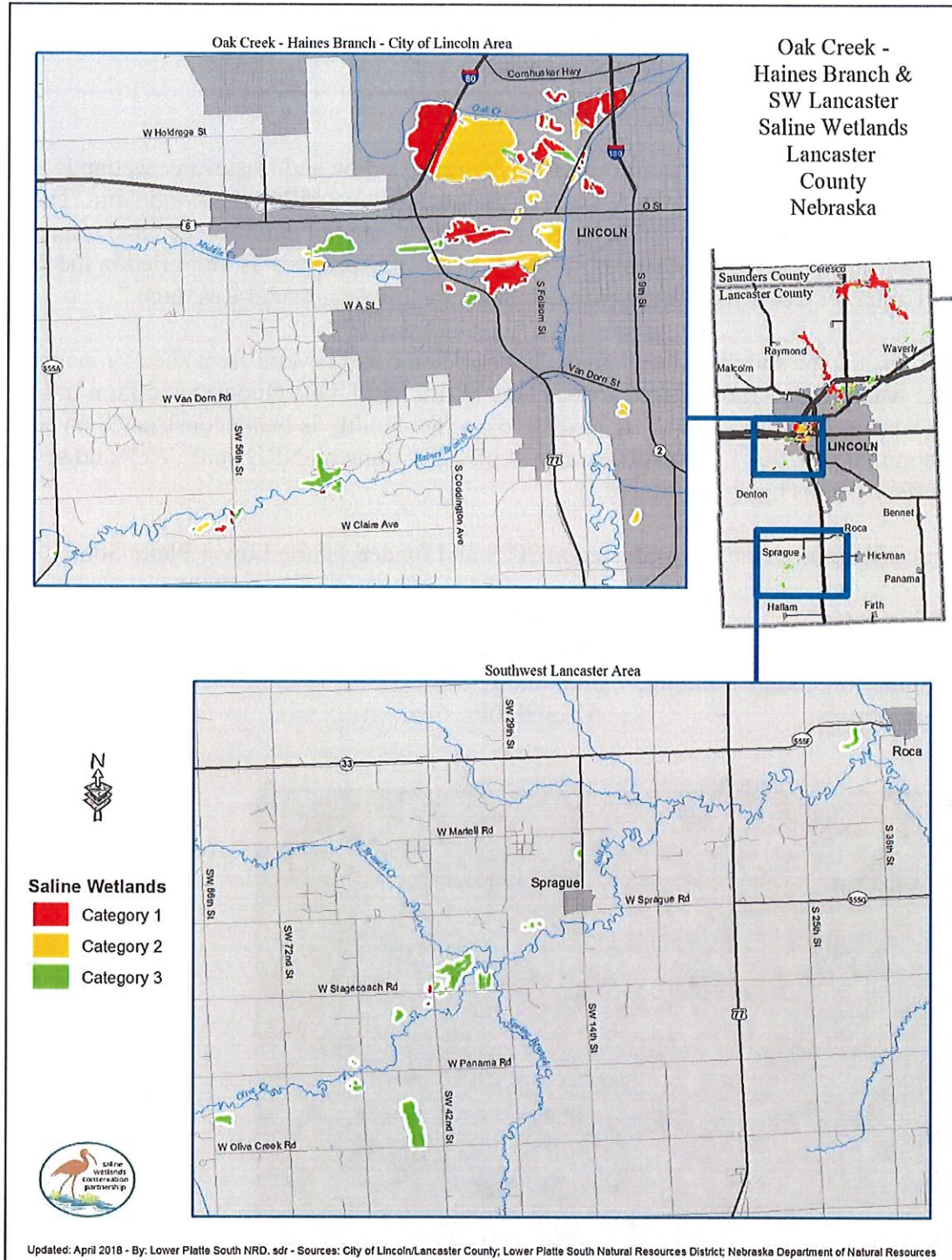


Illustration 2 identifies saline wetland locations located in southwestern Lancaster County. Saline wetland locations in the Oak Creek- Haines Branch inset include Pioneers Park and the Capital Beach/Airport areas. A few saline wetland conservation easements are located in the Southwest Lancaster inset near Roca and along West Olive Creek Road and Southwest 42nd Street.

Illustration 2



SUMMARY OF 2023 ACTIVITIES

FEE TITLE ACQUISITIONS

Arbor Lake North – August 2023

9600 North 27th Street. East of 27th Street and north approximately 0.5 miles of Arbor Road

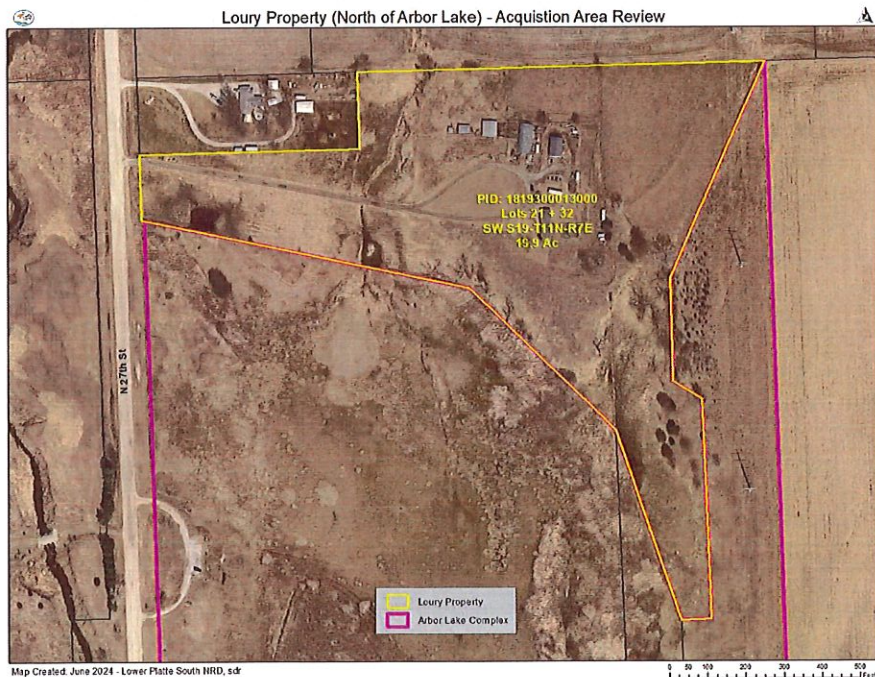
Size: 19.1 acres
Purchase price and date: \$480,000 on August 7, 2023
Funding sources: Lower Platte South NRD
Owner: Lower Platte South NRD

Notes – The property contains approximately 7 acres of saline and freshwater wetlands and 10 acres of grasslands. Approximately 7 acres of the property are within the floodplain. The property is contiguous with the 132.6-acre Arbor Lake Complex that is owned and managed by the City of Lincoln Parks and Recreation Department. The property is identified in the 2050 Lincoln/Lancaster County Comprehensive Plan as an “Environmental Resource.”

When purchased the site contained a manufactured home and several farm sheds in poor condition which were razed by the Lower Platte South NRD. One Quonset and farm utility building were kept and renovated. A 70x81x16 storage facility is being constructed on site and will be completed in 2024. General cleanup of property done by NRD staff. Well and sewage lagoon effectiveness being monitored.

Below are site improvements conducted in 2023 and funded by the Lower Platte South NRD:

Electrical update: \$3,200.00
Astro Building for storage: \$301,722.81
Level ground for storage building: \$8,000.00
House demolition \$13,638.00



Arbor Lake
North property

SALINE WETLAND RESTORATION

Schleich Wetland Head cut Repair Project

Due to runoff from nearby residential apartment development within the past 15 years, a head cut has formed draining a floodplain wetland into a tributary to Salt Creek. This head cut repair project calls for construction of a rock riprap drop structure to stabilize the head cut and streambank and restrict further advancement of head cut to protect floodplain wetland.

The Lower Platte South Natural Resources District on behalf of the Saline Wetlands Conservation Partnership completed a Final Design Plan for the repair project in January 2023. The project repaired a large head cut which has formed over the years draining wetlands and encroaching onto the adjacent City Park. Project included tree removal within the construction limits, grading and constructing a riprap lined channel, installing a catch basin and drainpipe, and post-construction seeding. Excavated soil was spoiled on site.

Project Cost

Engineering/Design: \$ 35,000.00
Construction: \$125,496.65

TOTAL \$160,496.65

Funding Source: LPSNRD

Construction began in March of 2023 and was completed in April 2023.



SALINE WETLAND RESEARCH

The SWCP has worked with partners on a variety of projects within the saline wetlands. Funding for projects has come from the Nebraska Environmental Trust, U.S. Fish and Wildlife Service, U.S. Environmental Protection Agency, and the Nebraska Game and Parks Commission.

ENDANGERED SPECIES

Efforts of the SWCP are to protect, restore, and manage the rare and unique saline wetland habitat and not just endangered species. The Salt Creek tiger beetle and Saltwort plants are indicator or bio species where their presence in Nebraska's eastern saline wetlands can indicate certain environmental conditions, such as soil type, pollution levels, etc. Therefore, it is imperative the SWCP helps to monitor the endangered species of these wetlands for conservation efforts, as well as monitoring other indicator species.

The Salt Creek tiger beetle (*Cicindela nevadica lincolniana* Casey) was listed as a state endangered species in 2000 and Federal endangered species on October 2005 and is endemic to the saline wetlands in Lancaster and southern Saunders counties. Saltwort (*Salicornia rubra*) is a state listed endangered species and in Nebraska only found in these saline wetlands.

The final revision to designate 1,110 acres of critical habitat for the Salt Creek tiger beetle was approved on May 5, 2014. Critical habitat is identified along four streams that contain sufficient potential habitat to support viable populations of Salt Creek tiger beetle: Little Salt Creek, Rock Creek, Oak Creek, and Haines Branch Creek. It is estimated the critical habitat can support at least six viable populations of Salt Creek tiger beetles and will ensure recovery of the species.

Re-introduced
Salt Creek tiger
beetle larvae



The critical habitat units include land under private ownership, lands owned by the Nebraska Game and Parks Commission, the City of Lincoln, the Lower Platte South Natural Resources District, and Pheasants Forever. Approximately 30 percent of the critical habitat is protected from future disturbance by conservation easements or fee title land acquisitions.

Salt Creek Tiger Beetle Research

The following research information provided by:

Shaun Dunn
Natural Heritage Zoologist
Nebraska Game and Parks Commission

2023 SCTB Highlights

- Annual meeting in spring of each year to coordinate plans for the coming year
- Recovery actions are primarily funded by USFWS's Section 6 grant funding
 - Looking into a research project with the University of Nebraska – Lincoln on Saline Wetland management to benefit SCTBs
- Released 293 larvae in 2023: 63 at Shoemaker and 230 at Marsh Wren
- Since Covid, lab-reared numbers have been low but we are increasing output each year
- Spring and summer of 2023 were very dry creating 'Exceptional Drought' conditions for the southeast Nebraska
 - This likely caused the low count of adult SCTB in 2023 (92).
- Continuing to work with many partners to keep this program moving forward:
 - Henry Doorly Zoo
 - Lincoln Children's Zoo
 - Topeka Zoo
 - University of Nebraska – Lincoln
 - City of Lincoln
 - Lower Platte South Natural Resources District
 - U.S. Fish and Wildlife Service
 - Saline Wetlands Conservation Partnership
 - Landowners
 - Platte Basin Timelapse

Recent annual counts:

2019: 250
2020: 345
2021: 276
2022: 275
2023: 92



Photos credit: Andrea Hennings, Omaha Zoo, 2023

Nebraska Eastern Saline Wetlands Monitoring and Evaluating Salinity Status, Hydrological Interaction, and Vegetative Community

Research conducted by: Zhenghong Tang, Ph.D, University of Nebraska – Lincoln

The overall goal of the research project was to deploy a wireless based real-time sensor network to monitor and evaluate salinity status, hydrogeological interaction, and vegetation of Nebraska's eastern saline wetlands

The wireless sensors were successfully installed in six selected sites in the Little Salt Creek Watershed within Lancaster County, Nebraska during April 12-15, 2021. Each site had one HYDRO 21 sensor to measure the water depth, temperature, and electrical conductivity; and one HYDRO 21 sensor to measure the volumetric water content, temperature and bulk electrical conductivity (ECb).

Project Cost: \$150,000 from EPA

Period: 3-year period (by 09-30-2023)

Assessing Salinity Dynamics of Saline Wetlands in Eastern Nebraska Using Continuous Data from Wireless Sensors (Jahangeer Jahangeer, S.M.ASCE; Ligang Zhang; and Zhenghong Tang) was published in the *ASCE's Journal of Hazardous, Toxic, and Radioactive Waste* in 2023. The research paper can be found here: <https://doi.org/10.1061/JHTRBP.HZENG-1263>

SALINE WETLAND LAND MANAGEMENT

Land management of the saline wetland areas include many ongoing tasks completed by land managers of the City of Lincoln Parks Department, Lower Platte South NRD, and the Nebraska Game and Parks Commission. These include noxious weed and tree removal, fencing construction and repair, prescribed burning when allowed, monitoring of water control structures, parking lot and grounds maintenance, public access development and maintenance, and helping site visitors. In addition, the land managers develop and administer agreements with local cooperators for grazing and haying the saline wetland management areas in the Little Salt Creek and Rock Creek drainage basins.

Seven seasonal employees in 2023 were hired by the Lower Platte South NRD to provide land management on the saline wetland areas. Members of the SWCP establish management activities to be addressed within the saline wetlands complex. These employees primarily worked on noxious weed and woody vegetation removal, structure maintenance, and access. Seasonal employees worked approximately 1,815 hours on saline wetland management activities. Funding for these positions is provided by the LPSNRD. The LPSNRD provided nearly \$27,234 to fund the salaries of the seasonal employee work on saline wetland management areas in 2023. The Coordinator and LPSNRD provide supervision of employees.

The LPSNRD has two full-time Maintenance Technicians who assist the seasonal employees with work performed on the saline wetlands. The coordinator also holds an annual meeting of the land managers of the saline wetland management areas to share and discuss issues and methods of land management in these areas.

SALINE WETLAND OUTREACH AND EDUCATION

- Saline Wetlands Digital Imaging Collection – This collection documents the history of the saline wetlands in Eastern Nebraska, including channel improvements of Salt Creek and Dead Man’s Run, flooding and high water on Salt Creek in the 1950s and 1960s, the early days of the Salt Valley Watershed District and the Salt-Wahoo Watershed Association, current efforts to conserve and restore saline wetland areas, and historical collections from NEBRASKAland magazine and Nebraska Game and Parks Commission. The original dates covered were from 1940 through 2018, with most materials from the 1980s-2000s. Periodically new material is entered into the collection.
- Lower Platte South NRD – provides opportunities for local schools to visit the saline wetlands to learn about saline wetland soils, vegetation, and hydrology. Students also examine invertebrate health within the wetlands and in streams to indicate stream health. In the spring, summer and fall of 2023, the NRD hosted field trips with 5th grade students and summer Day Camps at the Lincoln Saline Wetlands Nature Center. Around 50 students enjoyed netting insects at the site, learning about the vegetation and potential wildlife and netting for macroinvertebrates in the water!
 - NRD staff conducted Nebraska wetland presentations at various elementary schools for over 150 students
 - LPSNRD highlighted saline wetlands topics several times in the district newsletter, numerous times on social media, and in newspaper advertisements
 - The LPSNRD developed a classroom poster, activity sheet and stickers about Marsh Wren Saline Wetland. These items were included in the Middle School Environmental Studies Earth Day Kits impacting roughly 135 classrooms and 3,400 students.
- Saline Wetlands Conservation Partnership – Partnership representatives provide numerous presentations to students, conservation and service clubs, local organizations and residents, and professionals and agencies involved with projects and the conservation of Nebraska’s eastern saline wetlands.

- Saline Wetlands web site - The Saline Wetlands Conservation Partnership web site was developed in 2005 and is updated on an annual basis. It is accessed through the City of Lincoln/Parks and Recreation Department web page. This website provides information related to the Partnership, a description of saline wetlands and where they are located, provides information and photographs of publicly owned saline wetland areas, which are accessible for the public, and descriptions and photos of the unique flora and fauna of saline wetlands. Links are also provided to a variety of publications documenting the conservation of the saline wetlands.
- Wetlands of Nebraska Outreach and Education Project – The NGPC partnered with the Platte Basin Timelapse to develop wetland resources showcasing the importance and dynamics of Nebraska’s wetlands including an in-depth look at Nebraska’s regional wetland complexes. These new wetland resources include website content, documentaries of five wetland complexes including the saline wetlands, links to personal stories, photo galleries and more. The project was initiated in 2020 and completed in 2023.

SALINE WETLAND MANAGEMENT AREA PROTECTION (2001-present)

To preserve and restore these wetlands, an Implementation Plan for the Conservation of Nebraska’s Eastern Saline Wetlands was completed in 2003. In 2018, this plan was updated with Nebraska’s Eastern Saline Wetlands Conservation Plan. The Implementation Plan update addresses the preservation and restoration of Nebraska’s eastern saline wetlands. The Plan Goal, Comprehensive strategies, and Landscape objectives are established for future conservation of the wetlands. A summary of wetland acres conserved through fee-title acquisition and conservation easements since 2001 through the efforts of the Partnership is provided below. This summary is based on targets identified within Landscape objectives 1–4.

Summary of wetland acres conserved through fee-title acquisition

IMPLEMENTATION OF LANDSCAPE OBJECTIVES	TOTAL ACRES PER OBJECTIVE*	ACRES OF WETLAND PROTECTED OR RESTORED 2002-2017
1 – Permanently protect 100% (148 acres) of intact Category 1 saline wetlands and their associated conservation zones to ensure that the wetlands and their functions are sustained	148	47
2 – Restore and Protect 80% (1,412 acres) of unprotected degraded Category 1 saline wetlands and their associated conservation zones to ensure that the wetlands and their functions are sustained	1,412	505
3 – Restore (to intact Category 1 wetlands) and protect 50% (167 acres) of unprotected Category 3 saline wetlands and their associated conservation zones to ensure that the wetlands and their functions are sustained as intact Category 1 wetlands	167	99
4 – Restore (to intact Category 1 wetlands) and protect 50% (2,360 acres) of unprotected current non-wetland areas on saline hydric soils so that they become intact and sustained Category 1 saline wetlands	2,360	554
TOTAL	4,087	1,205

*Acres identified in 2003 Implementation Plan

Source: Ted LaGrange and Rachel Simpson of the NGPC, June 2018 and SWCP, 2024

Well Distribution.

The following Table provides a summary of the well distribution throughout the saline wetland management areas. Information gathered from the wells assists with the understanding of saline wetland hydrogeology of Nebraska's eastern saline wetlands.

Saline Wetland Management Area	Wells # (depths)			
	15-40 feet	41-90 feet	90 feet +	Other
Frank Shoemaker Marsh	3 (20', 25', 25')	3 (72.5', 75', 87.5')		1 (unknown depth)
Dakota Springs	3 (15', 25', 30')	2 (88', 79')	1 (98')	
Little Salt Creek WMA	2 (15', 15')	3 (77.5', 78', 83.5')	1 (182')	
Little Salt Fork Marsh Preserve	4 (9', 12', 25', 33')		2 (155', 201')	
Arbor Lake Complex	3 (14', 25', 28')	1 (41')	4 (113', 100', 120', 180')	
Little Salt Springs				1 (livestock)
Marsh Wren			2 6" (E. 216' and W. 155')	
Lincoln Saline Wetland Nature Center				1 (unknown depth)
Whitehead Saline Wetland	5 (15', 22', 23', 29'(?), 40')	1 (78')	2 (113', 188')	1 (unknown depth) 1 (Dial easement 30')
Jack Sinn WMA	1 (34.5')	4 (43', 45', 45', 63')	4 (93', 143', 143', 191')	2 (unknown depth)
Warner Wetlands		1 (60')		

FUNDING RESOURCES

The following provides a summary of awards from about the past ten years. It does not include all the grant awards received since the inception of the SWCP in 2002.

- Federal Section 6 Land Recovery Acquisition grants – In 2013, the NGPC through the U.S. Fish and Wildlife Service was awarded \$190,300 for the acquisition of a property containing saline wetlands. The funding was used for the acquisition of Saline Meadows in 2019.

In 2016, the NGPC through the U.S. Fish and Wildlife Service was awarded \$206,536 for the acquisition of a property containing saline wetlands. The funding was used for the acquisition of Saline Meadows in 2019.

In 2020, the NGPC through the U.S. Fish and Wildlife Service was awarded \$357,806 for the acquisition of a property containing saline wetlands. The funding is pending for land acquisition of saline wetlands.

- A grant was submitted to the Nebraska Environmental Trust in 2015 for the “Eastern Saline Wetlands Project – 2016.” The grant was approved in the amount of \$795,000 over three years primarily for wetland restoration/engineering/management and planning activities. A one-year extension of the grant was approved through June 2020. A final report was submitted in 2020.
- NAWCA – This proposal funded the protection and restoration of two unique wetland landscapes in Nebraska – the Sandhills and Saline wetlands. The Saline Wetlands provide habitat to a large variety of wildlife, particularly shorebirds and waterfowl during migration and the endangered Salt Creek tiger beetle, which is only located in this landscape. The grant was approved in 2020 in the amount of \$1,000,000 of which \$475,020 is designated for the saline wetlands landscape.
- Small NAWCA – Pheasants Forever, Inc received a Small NAWCA grant in 2019. The grant was awarded for approximately \$100,000. Nearly \$80,000 was used for the acquisition of the south Olson tract in 2021.
- Section 319 – The City of Lincoln made a request to the NDEE for Section 319 grant funds in the amount of \$80,000 pursuant to the Federal Clean Water Act and the Nebraska Nonpoint Source Management Program. The proposal was in regard to The Shoemaker Marsh project to increase the Eastern saline wetland habitat for rare, threatened and endangered species and other aquatic life, reduce erosion and sedimentation, and improve stream stability. This project will also address elements identified as priority by the Nebraska Nonpoint Source State Management Plan. The grant in the amount of \$80,000 was approved in 2022.

In July 2023 a grant amendment was approved to increase funding from \$80,000 to \$130,000 and matching funds from \$54,000 to \$87,000.

SUMMARY OF OTHER COORDINATOR ACTIVITIES

- Monitored City and County projects regarding construction activities scheduled near or on saline wetland areas
- Attended and participated in City of Lincoln Parks and Recreation Department meetings regarding Saline wetlands, Greenways, Wilderness Park, Prairie Corridor, Department Strategic Planning, and identification of skills for PPNC Director.
- Participated in Department Beehive training, Park qualities workshop sponsored by the Public Land Trust, assist with Parks Greenways/Trails position interviews, meet with LPSNRD Resource manager on saline wetland budget items, attended NNLP workshop, Eastern Saline Wetland pheasant plan discussions with NGPC, NRD, NRCS, and Pheasants Forever
- Toured saline wetland management areas with Platte Basin time-lapse team, NRCS PL566 team, Solidago, Greenways manager, and Prairie Plains Resource Institute
- Worked with USFWS and NGPC on endangered species monitoring efforts, re-introduction site locations, and participated in release of endangered species
- Worked with City legal counsel in development of Waiver, Release, and Access Agreements for grazing and haying of City owned land; executed agreements with cooperators and monitor work per agreement
- Several discussions regarding a potential mitigation bank with consultant, NGPC, Solidago, and LPSNRD and attendance of LPSNRD on-site pre-construction meeting at Schleich
- Participant of Prairie Corridor technical advisory committee, Nebraska Natural Legacy Project Habitat team, U.S. Corps of Engineers Nebraska inter-agency wetland group meetings, bi-annual Parks, City Watershed, and LPSNRD coordination meetings, SCTB re-introduction coordination meetings, Pioneers Park Nature Center leadership team, and PL566 planning team
- Work with landowners and representatives, fund administrators and agencies regarding the acquisition of land
- Assisted City Parks liaison on positions of certain legislative bills
- Assisted NGPC Zoologist with agreements for Spotted skunk camera trap locations
- Land management – Participated in interviews of potential seasonal employees, supervision of seasonal employees, annual saline wetland discussion with agency land managers, and noxious weed and woody vegetation control and coordination of GPS location identification at saline wetland sites. Toured PPNC conservation areas
- Arbor North – Contacted and worked with landowner, discussed potential acquisition with Parks administration, coordinated discussions between the LPSNRD, landowner and realtor. Assisted with completion of acquisition activities.

- Frank Shoemaker Marsh restoration project – Worked with City of Lincoln Purchasing Department on RFP and Selection of engineer consultant and construction contractor; completed agreement. Toured project site with representatives from NDEE, Parks, NGPC, LPSNRD, and consultants, and participated in pre-construction on-site meeting.



- Greenways Building – Selected unit price electrical contractor and monitor work to complete electrical installation.
- City Greenways and Prairie Corridor on Haines Branch – Greenways monthly land management and administration meetings, provided direction to Greenways Supervisor, Wilderness Park working group meetings, continual meetings with Solidago and team to discuss land acquisitions throughout the Prairie Corridor, participated in Prairie Corridor site visits and Strategic Planning exercise, discussions on potential Conestoga trail, assisted with grazing and haying agreements
- NW future park - Assisted administration team on future Northwest Park siting, several internal meetings, presented proposal to LPSNRD Finance and Planning sub-committee, and assist with several funding scenarios
- Presentations and information sharing on saline wetlands and the partnership – LPSNRD Recreation, Forestry, and Wildlife sub-committee, Nebraska Natural Legacy conference, NDEE and EPA field trip, UNL OLLI class, Conservation Practitioner Symposium, UNL classes at Marsh Wren and Whitehead with NRD and NGPC, assisted with NGPC staff tour of saline wetlands and UNL Career Day
- Conferences – Nebraska Wildlife Society and Nebraska Natural Legacy Project

- Grant Administration – Miscellaneous grant administration, provided grant application and identification of grant funding opportunities assistance to City Parks staff and other conservation agencies regarding wetland and prairie conservation projects. Identified and coordinated activities with funding sources on potential land acquisitions and habitat restoration projects. Assisted with USFWS Section 6 nontraditional land acquisition grant application for conservation area located at NW Park
 - NET 2016 – Worked to correct ownership status on grant funded equipment
 - Federal Section 319 – Developed and submitted application; approved for Frank Shoemaker Marsh project. Submitted grant revisions for grant extension and request for additional funding. Both approved and agreements completed and approved.
 - Federal Section 6 – Terminated 2021 application after discussion with USFWS assisted NGPC with submittal of 2024 application
 - NRCS PL566 – assisted LPSNRD and consultants when requested

SALINE WETLAND PROPERTIES

- **Frank Shoemaker Marsh** – 27th Street and Bluff Road

Size:	160 acres
Purchase price and date:	\$472,000 on June 12, 2003
Funding sources:	2001 State Wildlife Grant through the USFWS (\$222,000) 2002 NET grant (\$250,000)
Owner:	City of Lincoln

Activity summary – Noxious weed and wood vegetation removal. Prescribed haying.

- **Dakota Springs** – South of Arbor Road and East of 27th Street

Size:	68.7 acres
Purchase price and date:	\$204,700 in January 2004
Funding sources:	Federal Section 6 (\$153,525) 2002 NET grant (\$51,175)
Owner:	City of Lincoln

Dakota Springs Extension Purchase (Dial Realty, 7.45 acres)

Purchase price and date:	\$48,500 on December 31, 2008
Funding source:	Federal Section 6

Activity summary – Noxious weed and wood vegetation removal. Prescribed haying

- **Warner Saline Wetlands** - 98th Street and Interstate 80
 Size: 140 acres
 Purchase price and date: \$298,580 on December 7, 2004
 Funding sources: Federal Section 319 (\$179,148)
 LPSNRD (\$43,043.20)
 SWCP (\$76,388.80)
 Owner: LPSNRD

Activity summary –Noxious weed and wood vegetation removal. Prescribed grazing

- **Little Salt Creek Wildlife Management Area** – 1st Street and Raymond Road
 Total Size: 256.5 acres
 Purchase price and date: \$476,000 in June 2004 (original 156 acres)
 Funding sources: Federal Section 6 (\$276,000)
 2004 NET grant through NGPC (\$200,000)
 Owner: Nebraska Game and Parks Commission

Noble Tract Extension (100.5 acres) - Along Little Salt Creek, between Mill Road and the southern boundary of the original Little Salt Creek Wildlife Management Area.

Activity summary – Cedar removal and noxious weed control. Prescribed grazing

- **Little Salt Creek West Wildlife Management Area** – South of Branched Oak Road between NW 12th and 1st Streets
 Total Size: 220.0 acres
 Purchase price and date: \$979,000 on October 9, 2009
 Funding sources: Federal Section 6 (\$560,000)
 2005 NET Grant (\$42,838.58)
 2008 NET Grant (\$366,250.42)
 Ducks Unlimited (\$10,000)
 Owner: Nebraska Game and Parks Commission

Activity summary – Cedar removal and noxious weed control. Prescribed grazing.

- **Arbor Lake Addition** - North of Arbor Road and east of 27th Street
 Total Size: 69.2 acres
 Purchase price and date: \$361,710.67 on September 1, 2004
 Funding source: 2002 NET grant through City of Lincoln

Activity summary – Noxious weed and wood vegetation removal. Prescribed haying. City water line installation along south portion of property adjacent Arbor Road.

- **Marsh Wren** – Between 40th and 56th Streets and north of Salt Creek
 Total Size: 80.0 acres
 Purchase price and date: \$320,000 on May 27, 2009
 Funding sources: Lower Platte South NRD (\$25,000)
 SWCP (\$25,000)
 City of Lincoln floodplain acquisition funds (\$178,000
 (\$89,250 each from the City of Lincoln and the LPSNRD)
 2005 NET Grant (\$91,500)
 Owner: Lower Platte South Natural Resources District

Marsh Wren addition – East of 40th Street and immediately north of Salt Creek

- Size: 49.4 acres
 Purchase price and date: \$270,000 on June 19, 2012
 Funding sources: Federal Section 6 (\$135,000)
 2008 NET Grant (\$130,000)
 SWCP (\$5,000)
 Owner: Lower Platte South NRD

Activity summary – Noxious weed and wood vegetation removal. Prescribed haying. The saline water distribution system is monitored for water release and any necessary modifications SCTB releases site in 2023.

- **Little Salt Fork Marsh Preserve addition (Allen property)** – Between Branched Oak Road and Raymond Road and west of 1st Street
 Size: 66.6 acres
 Purchase price and date: \$304,000 on February 17, 2010
 Funding sources: Lower Platte South NRD (\$76,000)
 SWCP (\$75,000)
 2008 NET Grant (\$153,000)
 Owner: Lower Platte South NRD

Activity summary – Noxious weed and wood vegetation removal.

- **Little Salt Springs** – NW 12th Street and Branched Oak Road
 Size: 123 acres
 Purchase price and date: \$472,188 on July 31, 2007
 Funding sources: Lower Platte South NRD (\$187,960.35)
 2005 NET grant (\$227,227.95)
 Partnership Funds (\$57,000)
 Owner: Lower Platte South NRD

- **Little Salt Springs Addition** – West Branched Oak Road between NW 12th and NW 27th streets
 Size: 13.3 acres
 Purchase price and date: \$175,000 on October 15, 2015
 Funding sources: Lower Platte South NRD (\$43,201.17)
 2012 NET Grant (\$131,798.83)
 Owner: Lower Platte South NRD

Activity summary – Solar panels for well replaced. Noxious weeds and wood vegetation removal with emphasis along south and west fence lines. Prescribed grazing.

- **Helmuth Marsh** – South of Mill Road and west of 14th Street
 Size: 119.0 acres
 Purchase price and date: \$630,000 on November 23, 2010
 Funding sources: Federal Section 6 (\$275,000)
 2001 State Wildlife Grant through the
 U.S. Fish and Wildlife Service (\$131,666.50)
 NGPC (\$23,333.50)
 Donation from Helmuth family (\$200,000)
 Owner: Pheasants Forever, Inc.

Activity summary – Noxious weed and wood vegetation removal. Prescribed grazing and haying of upland.

- **Jack Sinn Wildlife Management Area (Kreitman addition)** – Between North 70th and North 84th streets and south of Ashland Road
 Size: 183.5 acres
 Purchase price and date: \$375,000 on June 4, 2014
 Funding sources: Nebraska Game and Parks Commission (\$225,000)
 2012 NET Grant (\$150,000)
 Owner: Nebraska Game and Parks Commission

Activity summary – Noxious weed and wood vegetation removal.

- **Jack Sinn Wildlife Management Area (Laurel Nelson property)** – On West Branched Oak Road between NW 12th and NW 27th streets
 Size: 79.8 acres
 Purchase price and date: \$378,000 on December 29, 2017
 Funding sources: Pittman-Robertson funds through the Nebraska Game and
 Parks Commission
 Owner: Nebraska Game and Parks Commission

Activity summary – Noxious weed and wood vegetation removal. Fencing plan developed to allow for prescribed grazing and parking lot being planned for access

- **Saline Meadows** – Between Little Salt and Ashland roads along North 40th Street

Size:	156.76 acres
Purchase price and date:	\$713,500 on July 29, 2019
Funding sources:	Nebraska Game and Parks Commission – Section 6 and cash funds (\$281,900)
Habitat	Pheasants Forever, Inc. (\$351,600)
	2016 City of Lincoln NET Grant (\$60,000)
	Saline Wetlands Conservation Partnership (\$20,000)
Owner:	Pheasants Forever, Inc. (NGPC provides land management)

- **Saline Meadows addition** - East of 40th Street and south of Little Salt Road

Size:	76.65 acres
Purchase price and date:	\$369,600 on April 12, 2021
Funding sources:	Pheasants Forever, Inc. (\$ 152,100)
	Ducks Unlimited (\$122,500)
	PF (\$95,000 North American Wetlands Conservation Act)
Owner:	Pheasants Forever, Inc. (NGPC provides land management)

Activity summary – Saline Meadows is contiguous with 1,620 acres of the Jack Sinn Wildlife Management Area that is owned and managed by the Nebraska Game and Parks Commission. Noxious weed and wood vegetation removal. Prescribed haying.

All structures have been removed and concrete bases are in the process of being removed to restore area. Boundary fencing is continuing, and three parking lots and signage have been planned and installation in progress.

- **Glacial Hill** – Between North 14th and North 27th streets and south of Waverly Road

Size:	139.7 acres
Purchase price and date:	\$807,700 (Norder tract 9/2014 (\$457,000) and Christensen tract 12/2018 (\$350,700)
Funding sources:	Federal Section 6 (\$270,000)
	2012 NET Grant (\$187,000)
	2016 NET Grant (\$275,000)
	City of Lincoln (\$75,000)
	Saline Wetlands Conservation Partnership (\$700)
Owner:	City of Lincoln

Activity summary – Noxious weed and wood vegetation removal. Boundary fencing repair and replacement. Prescribed grazing and haying.

The following saline wetland properties were acquired prior to the inception of the SWCP in 2002. The properties are supported through the activities identified in “Nebraska’s Eastern Saline Wetlands Conservation Plan (2018).”

- **Seacrest Range** (43 acres) – Located west of Folsom Street along both the north and south sides of Rosa Parks Way. The area is owned by the City of Lincoln. Efforts continued to remove wood vegetation and to control noxious weeds (Leafy spurge).
- **Lincoln Saline Wetlands Nature Center** (92.7 acres) – Located near Capitol Beach in Lincoln. The area is owned by the LPSNRD. Management activities included noxious weed control and woody vegetation removal and prescribed haying.
- **Schleich Wetlands** (50.2 acres) – Located southwest of Little Salt Creek near where it empties into Salt Creek and east of the Northridge subdivision in Lincoln. Owned by the LPSNRD. Management activities include noxious weeds and wood vegetation removal.
- **Whitehead Wetlands** (98.8 acres) – It is located east of 27th street and a short distance south of Interstate 80. The area is owned by the LPSNRD. Management activities include noxious weed control and removal of wood vegetation.
- **Arbor Lake Complex** (63.3 acres) – Located north of Arbor Road and east of 27th Street and owned by the City of Lincoln. Management activities included noxious and non-desirable weed control.
- **Little Salt Fork Marsh Preserve** (174.2 acres) – Located northwest of north 1st Street and Raymond Road and owned by the Lower Platte South NRD. Management activities include control of noxious weeds. Prescribed burn in 2022 and boundary fence installation along Raymond Road.
- **City of Lincoln Mitigation Bank** (183 acres) – South of Warner Wetlands it is located along 98th Street and north of Highway 6 the property is managed by the Lower Platte South NRD. Management activities include control of noxious weeds. Fence repairs and installation were completed along 98th Street in proximity to the parking area.
- **Jack Sinn Wildlife Management Area** (1,620 acres) – Located south of Ceresco in Saunders and Lancaster counties. The area is owned by the NGPC. Management activities include control of noxious weed and wood vegetation and grazing and haying.

This program has been very successful and continues to accomplish many of the goals of Nebraska's Eastern Saline Wetlands Conservation Plan (2018). Your continued support for the conservation of these natural areas is appreciated. If you have any questions, please contact me at 402-441-7063 or tmalmstrom@lincoln.ne.gov at the City Parks and Recreation Department or 402-476-2729 or tmalmstrom@lpsnrd.org at the NRD.

You can visit the saline wetland website at: <https://www.lincoln.ne.gov/City/Departments/Parks-and-Recreation/Parks-Facilities/Saline-Wetlands>



